



# Modern Awning

## Crank Out, Push Out and Automated

### Replacement Parts

Specifications and technical data are subject to change without notice.

Numbers listed in ( ) parentheses are metric equivalents in millimeters rounded to the nearest whole number.

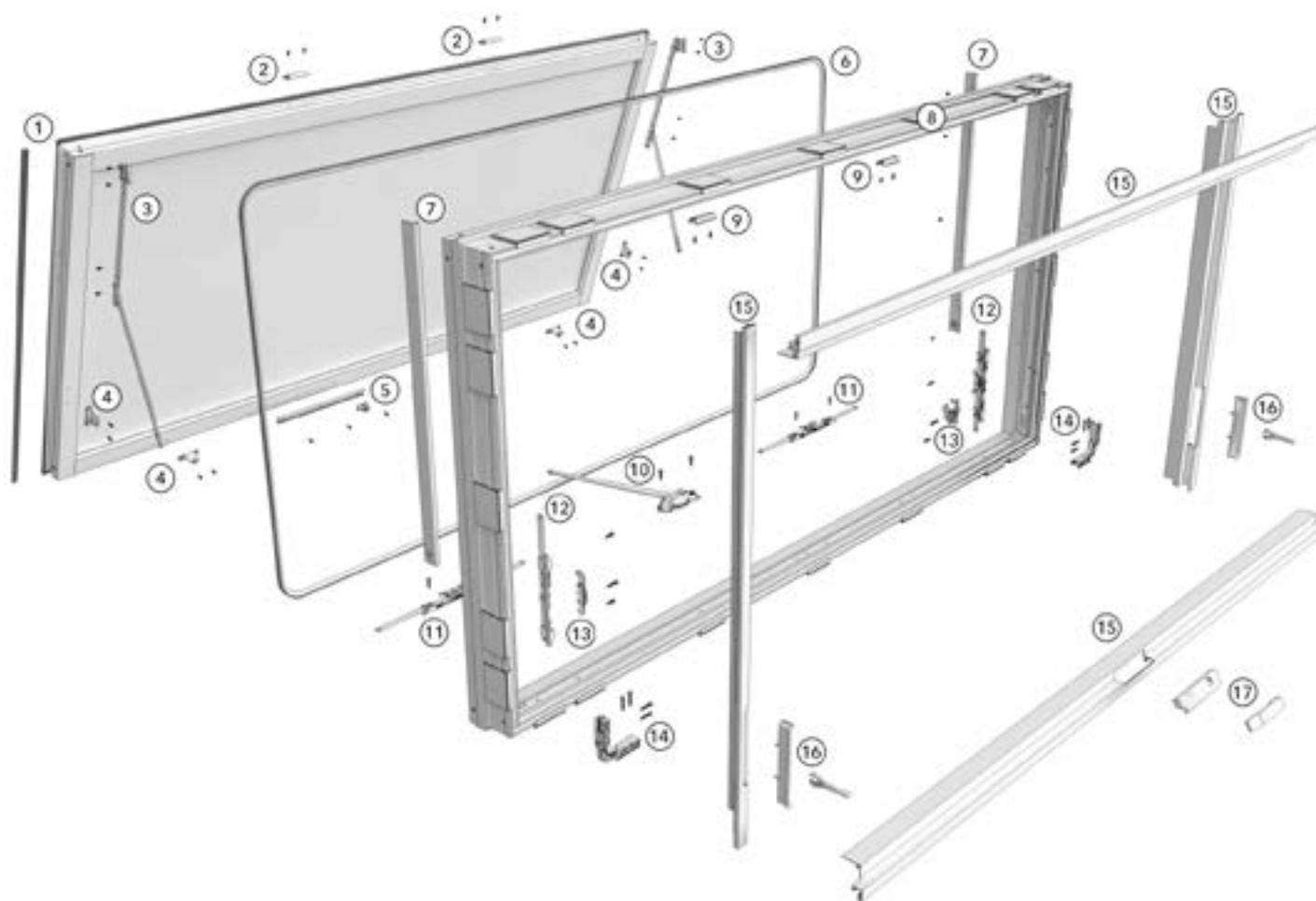
Suggested fasteners are not included and must be ordered separately.

Illustrations are not to scale.

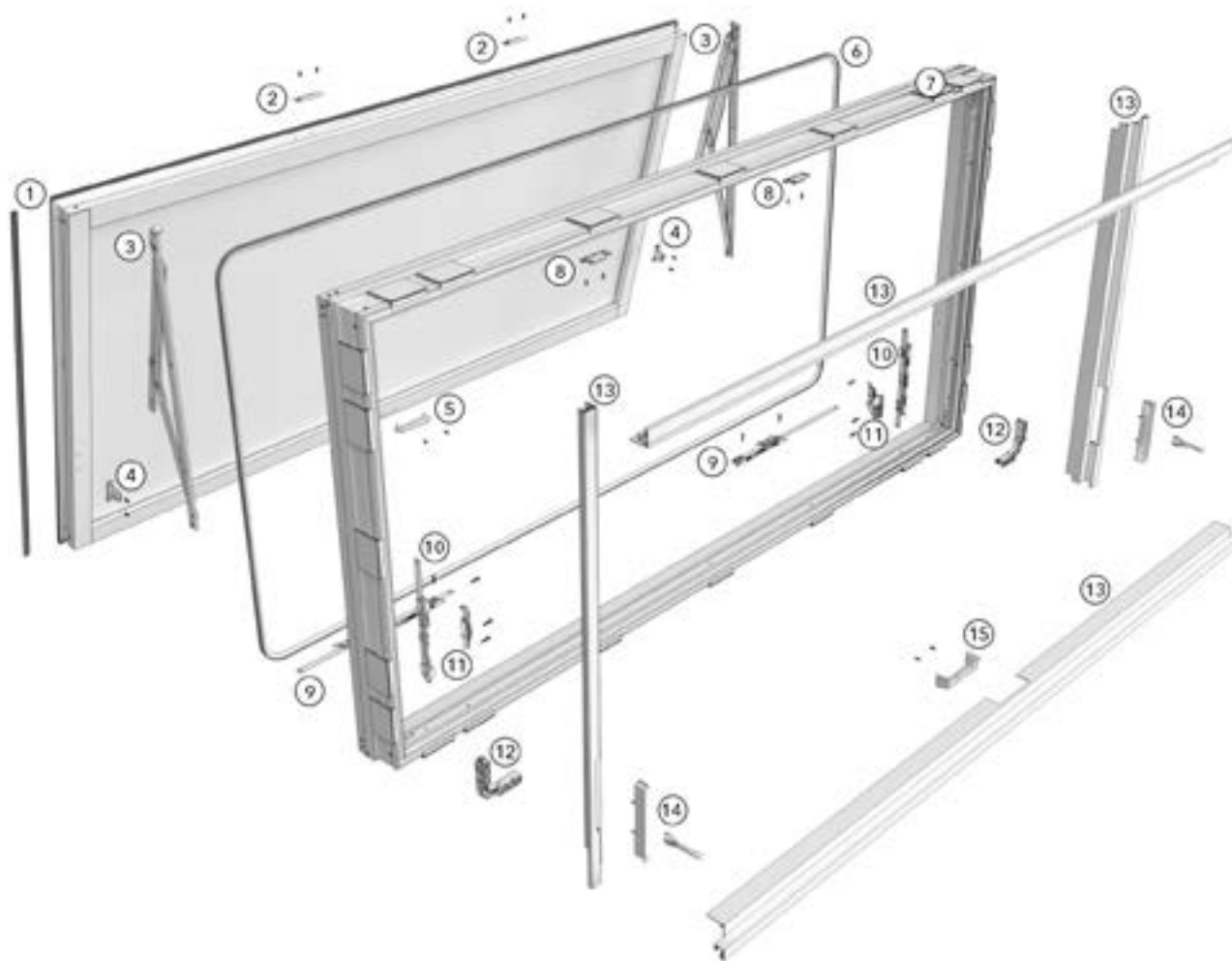
### Contents

Product History .....	2
Part Identification - Crank Out Unit .....	3
Part Identification - Push Out Unit .....	4
Part Identification - Automated Unit .....	5
Handles .....	6
Hinges .....	8
Operators .....	10
Miscellaneous Parts .....	13
Lock Status Sensor Parts .....	14
Automated Parts .....	15
Automated Parts - Configured Part in OMS .....	20
Automated Parts - Discontinued No Availability (NA) .....	21
CLiC Glass Parts .....	22
CLiC Glass Aluminum Parts - Configured Part in OMS .....	24
CLiC Glass Parts - Discontinued No Availability (NA) .....	25
Aluminum Parts - Configured Part in OMS .....	26
Vinyl Parts .....	27
Vinyl Parts - Discontinued No Availability (NA) .....	28
Weather Strip .....	29
Weather Strip - Discontinued No Availability (NA) .....	30
Replacement Sash - Configured Part in OMS .....	31
Replacement Screens - Configured Part in OMS .....	32
Screen Parts .....	33
Screen Parts - Discontinued Limited Availability (LA) .....	34
Tools .....	35

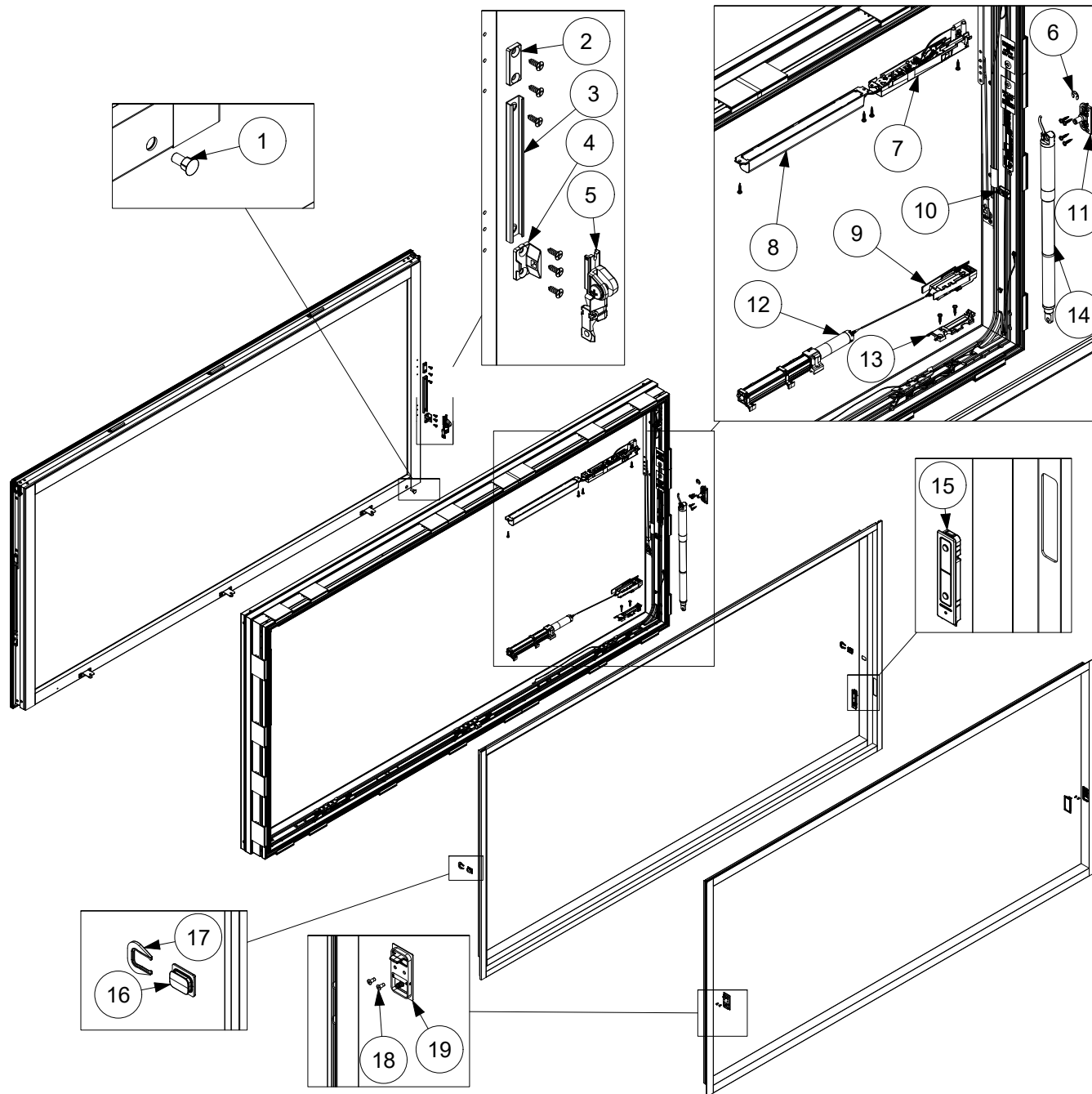
Produced	Unit Type	Features and Changes
2019	Awning Crank Out and Awning Push Out	04/29/2019: Introduced the Modern Awning Crank Out and Modern Awning Push Out.
2019	Awning Crank Out and Awning Push Out	12/16/2019: Introduced Mulling Options.
2020	Awning Crank Out and Awning Push Out	02/24/2020: Sash Weather Strip was changed from V2803 to V147.
2020	Awning Crank Out and Awning Push Out	04/27/2020: Interior Frame Covers were made available as a configured part in OMS.
2023	Awning Crank Out and Awning Push Out	10/30/2023: An ERS coating became available as a standard option for current Triple Pane offerings. See Product Bulletin 904 for more details.
2024	Awning Automated	02/26/2024: Automated parts added to allow the awning to integrate with the Marvin Connected Home app. See Product Bulletin 906 for additional information.



1. Sash Weather Strip, V147 (used on full perimeter of sash)
2. Snubber, Sash
3. Hinge Arm Assembly
4. Keeper
5. Operator Track and Pivot Slide
6. Frame Weather Strip, V2808
7. Hinge Track
8. Shim Block, V2916 (available in Accessories section)
9. Snubber, Frame
10. Single Arm Operator
11. Sill Lock
12. Tie Bar Assembly
13. Lock Base Assembly
14. ATC Lock Assembly
15. Interior Frame Cover, A3390 (used on the full interior perimeter)
16. Lock Handle and Escutcheon
17. Folding Handle and Cover



1. Sash Weather Strip, V147 (used on perimeter of sash)
2. Snubber, Sash
3. Hinge Arm Assembly
4. Keeper
5. Push Out Handle
6. Frame Weather Strip, V2808
7. Shim Block, V2916 (available in Accessories section)
8. Snubber, Frame
9. Sill Lock
10. Tie Bar Assembly
11. Lock base assembly
12. ATC Lock Assembly
13. Interior Frame Cover, A3390 (used on full interior perimeter)
14. Lock Handle and Escutcheon
15. Push Out Escutcheon

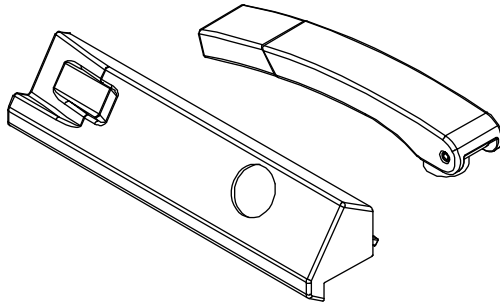


1. Magnetic Housing Assembly
2. Track Stop
3. Operator Track
4. Sash Bracket
5. Sash Connector
6. E-Clip, 3/8 Shaft
7. Wireless Control Board
8. Supercapacitor
9. Motol Control Housing
10. Wire Holder
11. Sash Actuator Bracket, Frame
12. Lock Actuator
13. Housing Base, Motor Control Board
14. Sash Actuator
15. On Unit Control
16. Screen Latch Receiver
17. Screen Latch Receiver Retainer
18. Rivets
19. Screen Latch Assembly

## Folding Handle and Cover

*Crank Out*

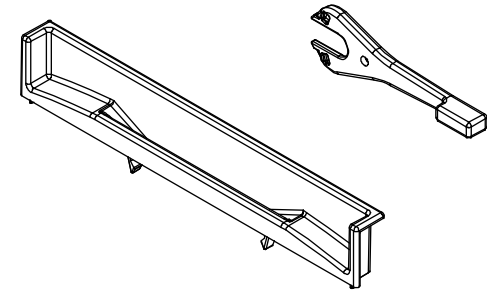
Color	LH PN
Matte Black	10816475
Matte Bronze	10816477
Satin Nickel	10816479
Silver	10816481
Stone White	10816483



## Lock Handle and Escutcheon

*Crank Out, Push Out and Automated*

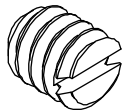
Color	PN
Matte Black	10816465
Matte Bronze	10816466
Satin Nickel	10816467
Silver	10816468
Stone White	10816469



## Set Screw, Folding Handle

*Crank Out*

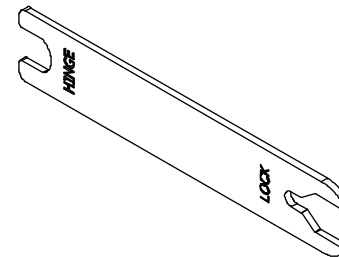
Color	PN
Black	10816485



## Lock Handle Wrench

*Crank Out, Push Out and Automated*

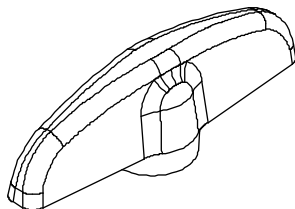
PN
10810020



## T-Handle, Operator

*Crank Out (construction handle only)*

PN
10898670



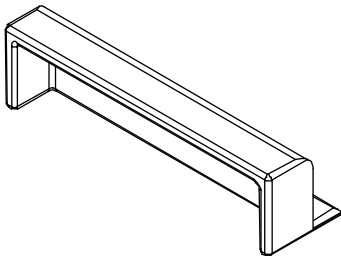
# Push Out Handle Kit

## Push Out

### Includes:

- 1 - Push out handle
- 2 - #8-15 x 1/2" type AB, Phillips, flat head, stainless steel screws

Color	PN
Matte Black	11862756
Matte Bronze	11862757
Satin Nickel	11862758
Silver	11862759
Stone White	11862760



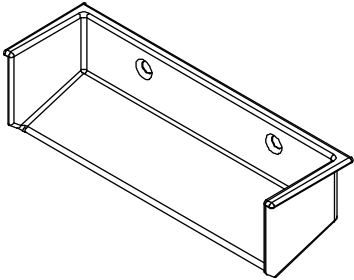
# Push Out Escutcheon Kit

## Push Out

### Includes:

- 1 - Push out escutcheon
- 2 - #6 x 1/4" Phillips, flat head, stainless steel screws

Color	PN
Matte Black	11862761
Matte Bronze	11862762
Satin Nickel	11862763
Silver	11862764
Stone White	11862765



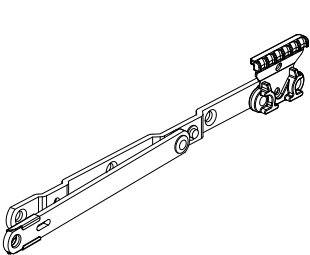
# Hinge Arm Kit

*Crank Out and Automated*

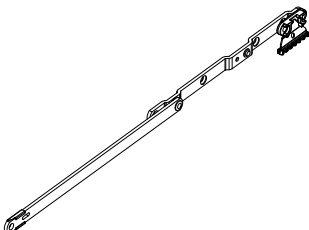
**Includes:**

- 1 - Hinge arm, Stainless Steel
- 4 - #8-15 x 3/4" type AB, Phillips, flat head, stainless steel screws

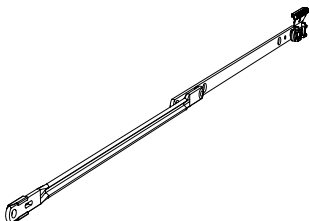
Usage	Length	LH PN	RH PN
For frame height 16.000" - 19.999"	10"	11862704	11862705
For frame height 20.000" - 35.999"	18"	11862706	11862707
For frame height 36.000" - 96.000"	26"	11862708	11862709



10" Hinge Arm



18" Hinge Arm



26" Hinge Arm

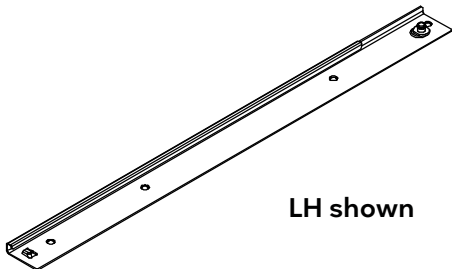
# Hinge Track Kit

*Crank Out and Automated*

**Includes:**

- 1 - Hinge track, Stainless Steel
- 4 - #8-15 x 1/2" type AB, Phillips, flat head, stainless steel screws

Usage	Length	LH PN	RH PN
For frame height 16.000" - 19.999"	10"	11862710	11862711
For frame height 20.000" - 35.999"	18"	11862712	11862713
For frame height 36.000" - 96.000"	26"	11862714	11862715



LH shown



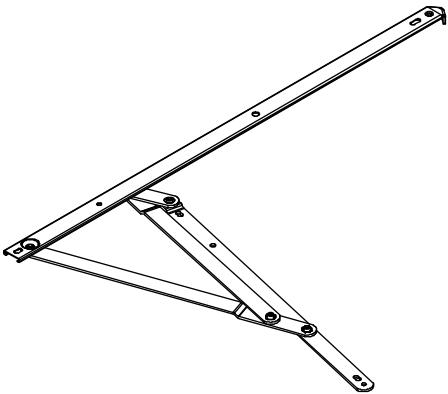
# 4-Bar Hinge Assembly Kit

## Push Out

### Includes:

- 1 - 4-Bar hinge assembly
- 8 - #8-15 x 3/4" Type AB, Phillips, flat head, stainless steel screws
- 4 - #8-15 x 3/8" Type AB, Phillips, flat head screws

Usage	Length	Color	PN
For frame height 16.000" - 23.999"	10"	Stainless Steel	11862766
For frame height 24.000" - 35.999"	16"		11862767
For frame height 36.000" - 96.000"	24"		11862768



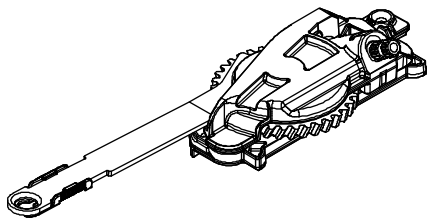
## Single Arm Operator

### Crank Out

#### Includes:

- 1 - Single arm operator
- 2 - #8-10 x 3/4" full thread, Phillips, pan head, stainless steel screws

Description	Length	Color	PN
For frame width 20.000" - 24.999"	5"	Painted Silver	11862753
For frame width 25.000" - 31.999"	8 1/2"		11862754
For frame width 32.000" - 96.000"	12"		11862755



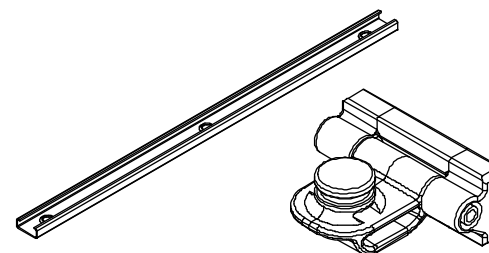
## Operator Track and Pivot Slide

### Crank Out

#### Includes:

- 1 - Operator track
- 1 - Pivot slide
- 3 - #8-15 x 1/2" type AB, Phillips, flat head, stainless steel screws

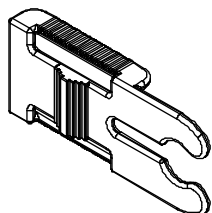
Description	Length	Color	PN
For frame width 20.000" - 24.999"	5"	Stainless Steel	11862730
For frame width 25.000" - 31.999"	8 1/2"		11862731
For frame width 32.000" - 96.000"	12"		11862732



## Detach Clip, Single Arm Operator

### Crank Out

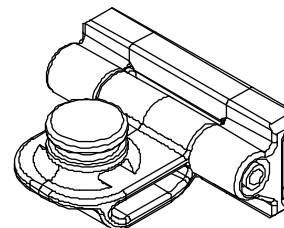
PN
10500452



## Pivot Slide

### Crank Out

Color	PN
Black	10816282



# Tie Bar Assembly

## Crank Out and Push Out

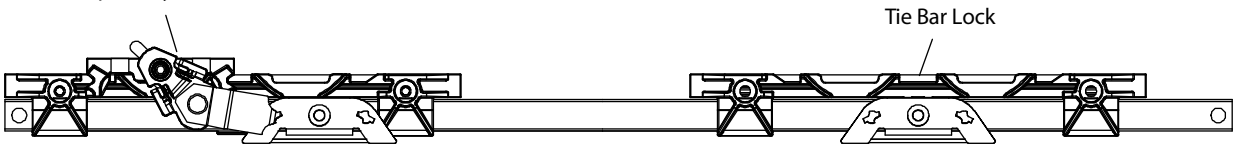
### Includes:

#8-10 x 3/4" full thread, Phillips, pan head stainless steel screw (see below for quantity included).

NOTE: Tie Bars for Automated units must be ordered by configured part to have the proper hardware applied to them.  
(see Automated Parts - Configured Parts in OMS page)

Usage	Length	Color	LH PN	RH PN
For frame height 16.000" - 18.499" (includes 2 screws)	8"	E-Gard	11862733	11862734
			PN	
For frame height 18.500" - 31.999" (includes 2 screws)	10"	E-Gard	11862735	
For frame height 32.000" - 46.499" (includes 4 screws)	23 1/2"		11862736	
For frame height 46.500" - 55.999" (includes 6 screws)	38"		11862739	
For frame height 56.000" - 77.999" (includes 6 screws)	47 1/2"		11862741	
For frame height 78.000" - 83.999" (includes 6 screws)	53 1/2"		11862742	
For frame height 84.000" - 89.999" (includes 6 screws)	59 1/2"		11862743	
For frame height 90.000" - 96.999" (includes 6 screws)	65 1/2"		11862744	

Lock Base Assembly (shown for illustrative purposes only – Must be ordered separately)



## Sill Lock Kit

### *Crank Out and Push Out*

#### Includes:

- 1 - Sill lock
- 2 - #8-10 x 3/4" full thread, Phillips, pan head, stainless steel screws

NOTE: Both a LH and a RH part is used on frame widths over 71.999"

Usage	Length	Color	LH PN	RH PN
For frame width 48.000" - 71.999	16"	E-Gard	11862769	NA
For frame width 72.000" - 96.000"			11862769	11862770



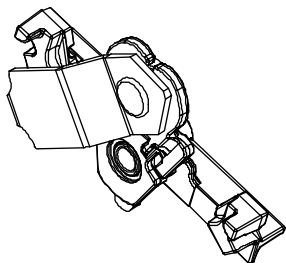
## Lock Base Assembly Kit

### *Crank Out and Push Out*

#### Includes:

- 1 - #8-15 x 1" TEK-3, full thread, Phillips, pan head screw

PN
11862718



## ATC Lock Assembly Kit

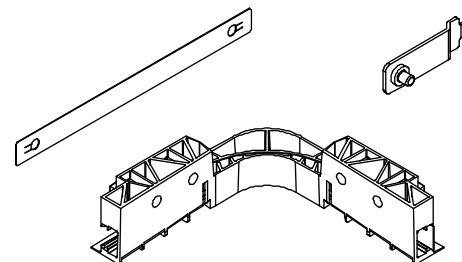
### *Crank Out and Push Out*

#### Includes:

- 1 - ATC lock assembly
- 4 - #8-15 x 1" TEK-3, full thread, Phillips, pan head screws

NOTE: 1 used on frame widths of 48" through 71.99" and 2 used on frame widths 72" through 96".

PN
11862717



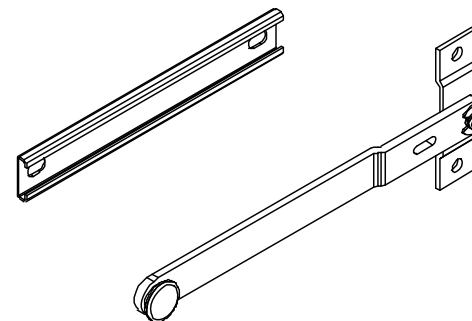
## Sash Limiter Kit, Custodial

### *Crank Out, Push Out and Automated*

#### Includes:

- 1 - Sash limiter and track assembly
- 4 - #8-15 x 3/8" Torx screw
- 1 - Torx tamper-proof custodial bit
- 1 - Field installation instruction

PN
11850750



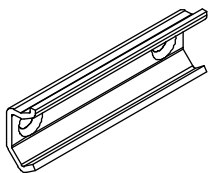
## Snubber Replacement Kit

*Crank Out and Automated*

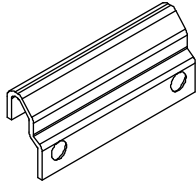
**Includes:**

- 4 - Frame snubber
- 4 - Sash snubber
- 16 - #8-15 x 1/2" type AB, Phillips, flat head, stainless steel screws

Color	PN
Stainless Steel	11862479



Frame Snubber



Sash Snubber

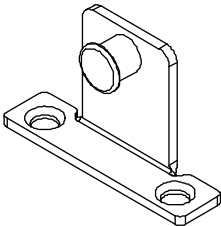
## Keeper Kit

*Crank Out, Push Out and Automated*

**Includes:**

- 1- Keeper
- 2 - #8-15 x 1/2" type AB, Phillips, flat head, stainless steel screws

Color	PN
Stainless Steel	11862716



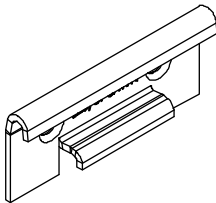
## Snubber Replacement Kit

*Push Out*

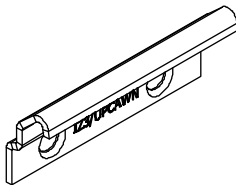
**Includes:**

- 4 - Frame snubber
- 4 - Sash snubber
- 16 - #8-15 x 1/2" type AB, Phillips , flat head, stainless steel screws

Color	PN
Stainless Steel	11862771



Frame Snubber



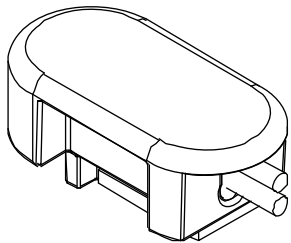
Sash Snubber

## Reed Capsule

*Crank Out, Push Out and Automated*

Color	Length	PN
Black	52"	10501846
	*144"	10501853

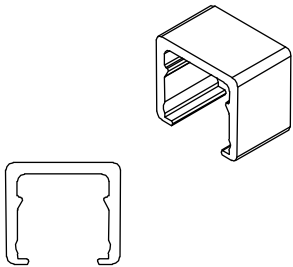
\*NOTE: 144" length used on Automated Awning units only that are frame height 25" and taller and wide pushout and crankout units



## Lock Status Sensor Clip

*Crank Out, Push Out and Automated*

PN
10500890



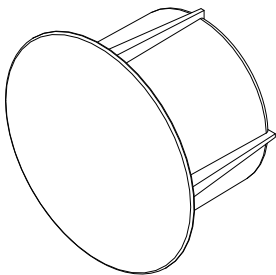
## Magnet Housing Assembly

*Crank Out, Push Out and Automated*

**Includes:**

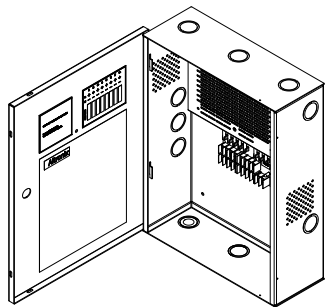
- 1 - Magnet, 1/4" x 5/8" N52
- 1 - Magnet housing

Color	PN
Black	10501836
White	10501837



## Power Supply Box

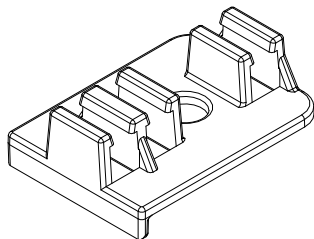
PN
02066143



## Wire Holder Kit

- Includes:**
- 1 - Wire holder
  - 2 - #8-10 x 3/4" full thread, Phillips, pan head, stainless steel screws

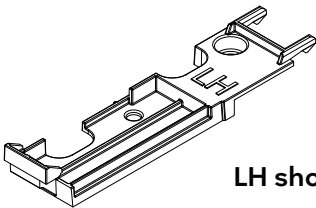
PN
11852562



## Housing Base, Motor Control Board Kit

- Includes:**
- 1 - Housing base, Motor Control Board
  - 2 - #8-10 x 3/4" full thread, Phillips, pan head, stainless steel screws

Handing	PN
LH	11852560
RH	11852561

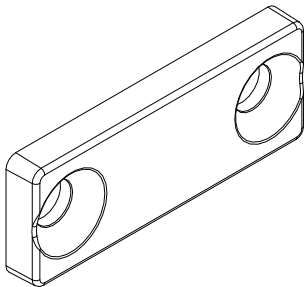


LH shown

## Track Stop Kit

- Includes:**
- 1 - Track stop
  - 2 - #8-15 x1/2" type AB, Phillips, flat head screws

PN
11852563

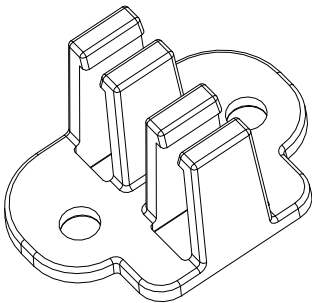


## Motor and Harness Wire Organizer Kit

**Includes:**

- 1 - Motor and harness wire organizer
- 2 - #8-10 x 3/4" full thread, Phillips, pan head, stainless steel screws

PN
11852564

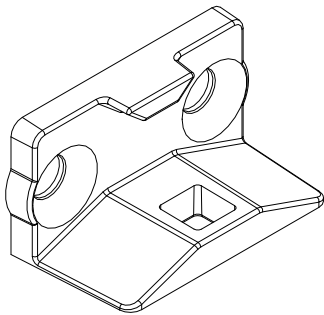


## Bracket Kit, Sash

**Includes:**

- 1 - Bracket
- 2 - #8-15 x 1/2" type AB, Phillips, flat head screws

PN
11852567

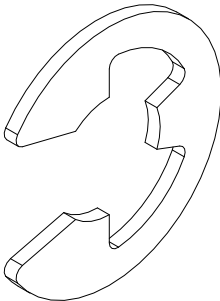
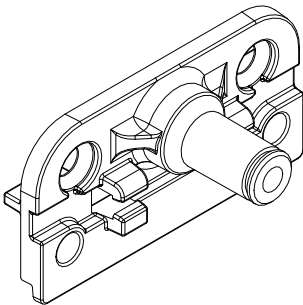


## Sash Actuator Bracket Kit, Frame

**Includes:**

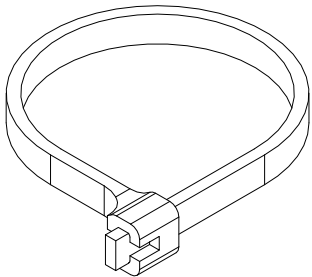
- 1 - Bracket
- 1 - E-Clip, 3/8 shaft
- 1 - Flange bushing
- 2 - #8-10 x 3/4" full thread, Phillips, pan head, stainless steel screws
- 2 - #10-12 x 3" Torx, pan head 2/3 thread screws
- 2 - #8-32 x 1 1/4" Trilobular screws

PN
11852566



## Tie Cable Kit, Narrow, 4"

Color	PN
Black	11852525

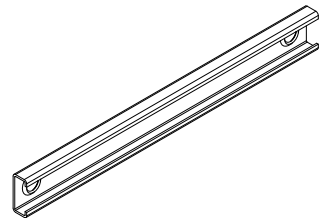




# Operator Track Kit

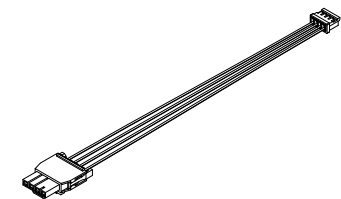
- Includes:**
- 1 - Awning operating track
  - 2 - #8-15 x 1/2" full thread, Phillips, flat head screws

Length	PN
5" (127)	11852568



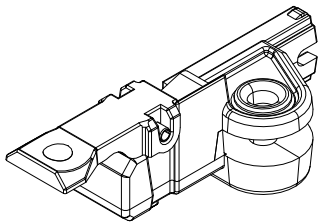
# Supercapacitor Wire Harness

Length	Frame Width	PN
4" (102)	36.125" to 108.000"	10810026
23" (584)	23.500" to 27.499"	10810027
31" (787)	27.500" to 36.124"	10810033



# Sash Connector

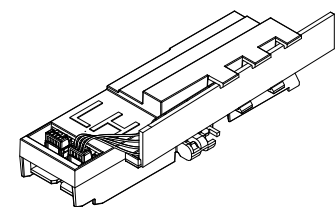
Handing	PN
LH	10501794
RH	10501795



NOTE: Handing follows the unit handing. LH shown

# Motor Control Board

Handing	PN
LH	10810029
RH	10810030



NOTE: Handing follows the unit handing. LH shown

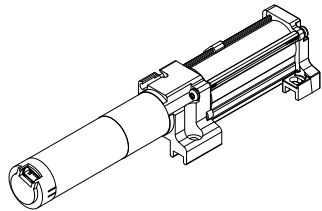
## Manual or Non Manual Actuator Lock Kit

**Includes:**

- 1 - Manual or Non Manual lock actuator\*
- 2 - #8-10 x 3/4" full thread, Phillips, pan head, stainless steel screws

\*Parts are handed and or change length for Manual vs. Non Manual capable actuators

Description	Handing	Frame Width	PN
Manual	LH	38.500" to 96.000"	11852577
	RH		11852578
Non Manual	LH	23.500" to 38.499"	11852575
	RH		11852576

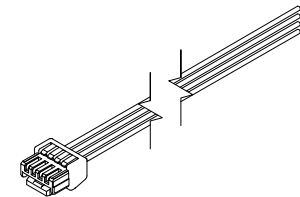


NOTE: Handing of lock actuator follows the unit handing. RH Non Manual shown.

## Y Branch Wire Harness

NOTE: Wire harness replacement also requires a 4" Cable Tie (ordered separately)

Length	Frame Height	PN
31" (787)	18.000" to 21.999"	10810023
37" (940)	22.000" to 27.999"	10810024
44" (1118)	28.000" to 34.999"	10810025
53" (1346)	35.000" to 44.000"	10810053

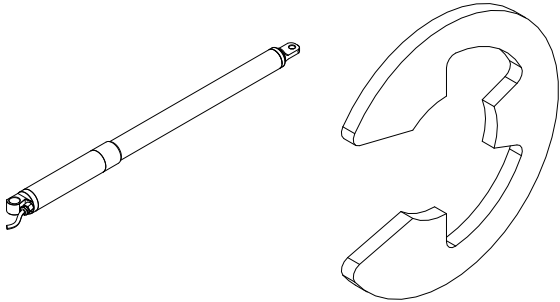


## Sash Actuator Kit

**Includes:**

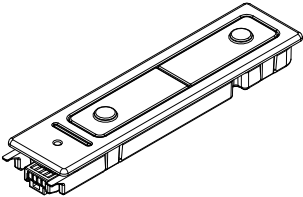
- 1 - Sash actuator
- 1 - E-Clip, 3/8 shaft
- 1 - 4" cable tie
- 1 - 1/4-20 x 5/8" Phillips, flat head screw

Length	Frame Height	PN
4" short wire (127)	18.000" to 29.749"	11852573
4" long wire (127)	29.750" to 44.000"	11852572



## On Unit Control

Color	PN
Matte Black	10810032
Stone White	10810031

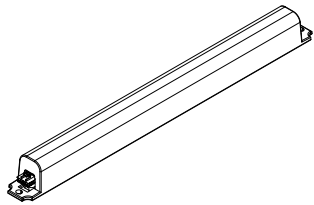


# Supercapacitor Kit

## Includes:

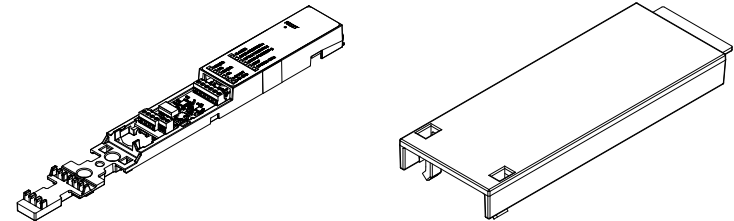
- 1 - Supercapacitor subassembly
- 2 - #8-10 x 3/4" full thread, Phillips, pan head, stainless steel screws

PN
11852579



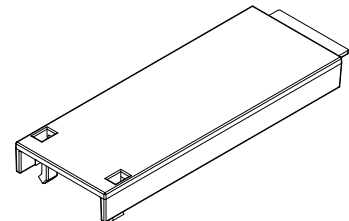
# Wireless Control Board with Ethernet Kit

PN
11860979



# Wireless Control Board Ethernet Cover

PN
10502016



## Tie Bar Assembly

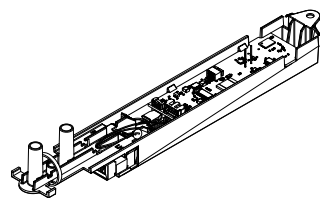
### *Automated*

#### **Includes:**

#8-10 x 3/4" full thread, Phillips, pan head stainless steel screws

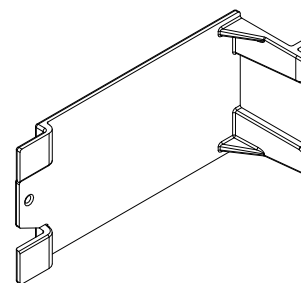
NOTE: Tie Bars for Automated units must be ordered by configured part to have the proper hardware applied to them.





**Wireless Control Board**

No longer available, replace  
with current



**Secondary Cover, Wire**

No longer available

## CLiC Single Channel Controller, Gen II Kit

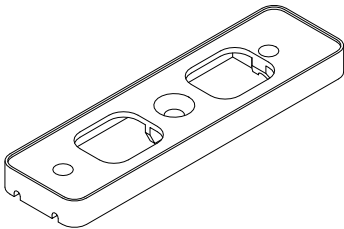
- Includes:**  
1 - Next Gen Controller  
1 - Power Supply

PN
10700338



## Powerlink Spacer

PN
10503550



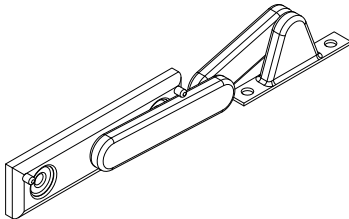
## CLiC, 8-Channel Smart Hub, Controller

PN
10700298



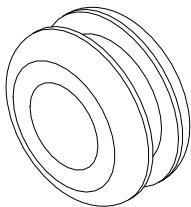
## CLiC Powerlink

PN
10703380



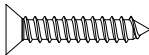
Grommet, 3/8"

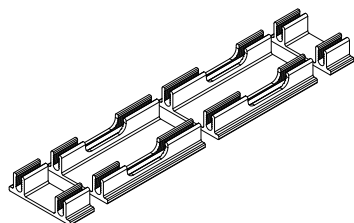
Color	PN
Black	10892250



#6-18 x 3/4" Type A, Full Thread Screw

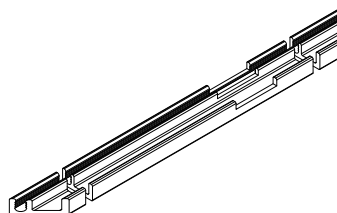
PN
11801531





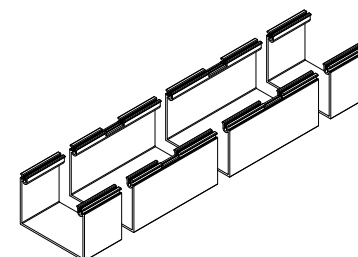
**A3315**

Mull Cover, w/CLiC Route



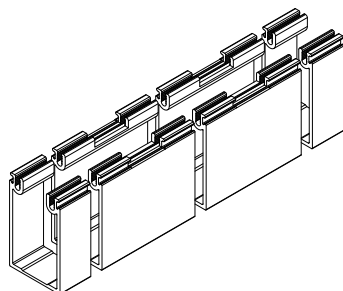
**A3316**

Trim, Interior, Vertical, w/CLiC Route



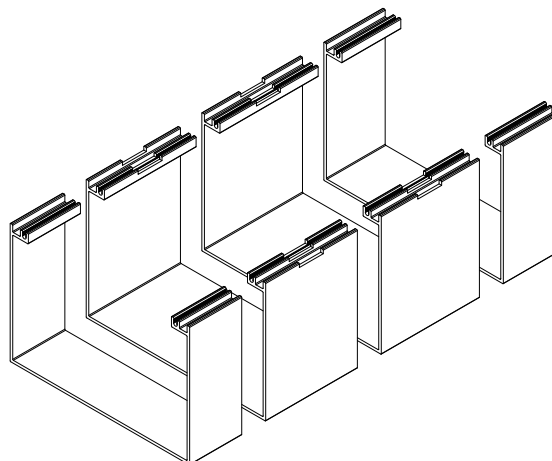
**A3512**

Mull Cover, Interior, 2" x 4", Vertical Jamb, w/CLiC Route



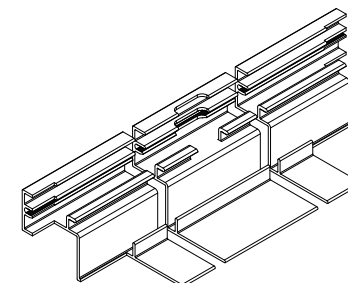
**A3513**

Mull Cover, Interior, 5" x 4", Vertical Jamb, w/CLiC Route



**A3567**

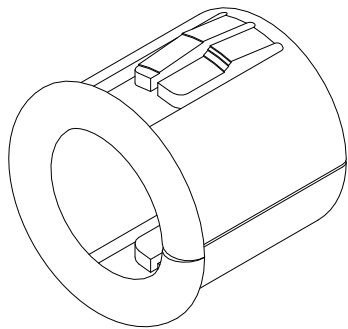
Mull Cover, Interior, 4 1/2", Vertical, w/CLiC Route



**A3390**

Interior Cover, Jamb, w/CLiC Route





**Grommet, 3/8"**

Replace with current part



**CLiC Glass Controller, Single Channel, Kit**

Replace with current part

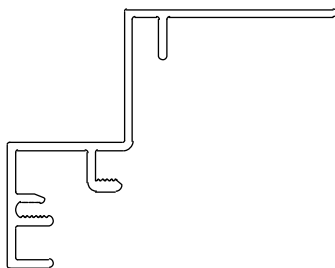


**CLiC Glass Controller, 8-Channel Hub**

Replace with current part

## Replacement Interior Covers are available as a configured part in OMS.

NOTE: If a new escutcheon cover is needed when ordering a new interior cover for an Awning Push Out, it must be ordered separately. See “Push Out Escutcheon Kit” in the Handle pages of this section for part numbers.



**A3390**

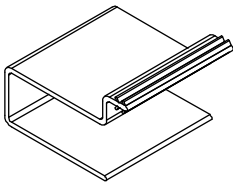
Interior Cover

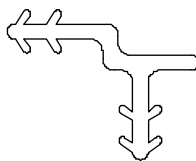
# Frame Cover Support

V3126

*Crank Out, Push Out, Picture and Automated*

Length	Color	PN
1 1/2" (38)	Natural	16219325





**Connecting Barb, V087**

Crank Out, Push Out and Picture

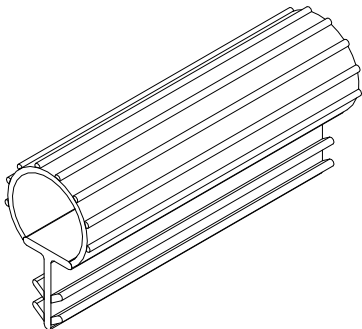
No longer available - use current part

# Sash Weather Strip

V147

*Crank Out, Push Out, Picture and Automated*

Length	Color	PN
150" (3810)	Black	17002299

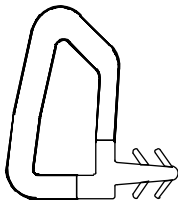


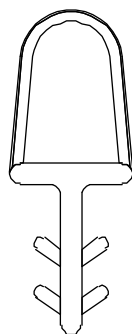
# Sash Weather Strip

V2808

*Crank Out, Push Out, Picture and Automated*

Length	Color	PN
Specify Length	Black	15356397





**Sash Weather Strip  
V2803**

Crank Out and Push Out

No longer available - use current part

**Replacement Sash: Replacement sash are available through Configured Parts in OMS.**

NOTE: Sash is not reglazable; replacement glass will require a new sash.

## **Replacement Screens: Screens are available through Configured Parts in OMS.**

NOTE: If a screen is being added to an existing product, stops must also be ordered.



## Screen Latch Kit

*Crank Out, Push Out and Automated*

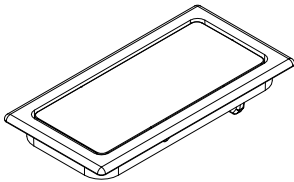
**Includes:**

- 1 - Screen latch assembly
- 2 - Rivets

**Usage dates:**

2/26/2024 to present

Color	PN
Matte Black	11852585
Matte Bronze	11852586
Stone White	11852587
Gunmetal	11852588
Silver	11852589



## Screen Latch Receiver Kit

*Crank Out, Push Out and Automated*

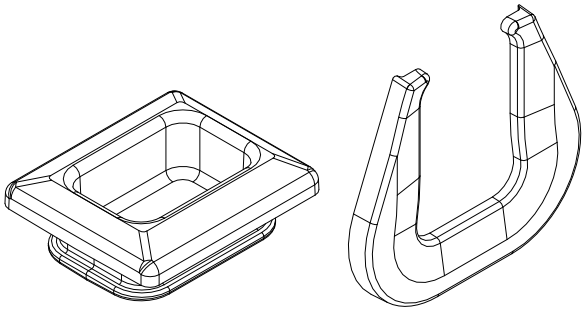
**Includes:**

- 1 - Screen latch receiver
- 1 - Screen latch receiver retainer

**Usage dates:**

2/26/2024 to present

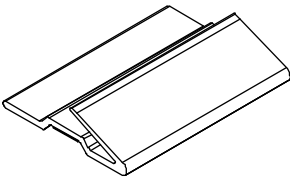
Color	PN
Matte Black	11852590
Matte Bronze	11852591
Stone White	11852592
Gunmetal	11852593
Silver	11852594



## Screen Alignment Bumper

*Crank Out, Push Out and Automated*

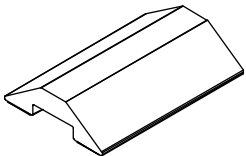
Color	PN
Black	15709427



## Screen Bottom Rail Bumper

*Crank Out, Push Out and Automated*

Color	PN
Black	15709428



## Screen Latch Assembly Kit

*Crank Out and Push Out*

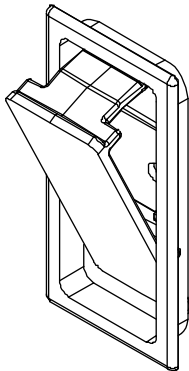
**Includes:**

- 1 - Screen latch assembly
- 2 - Rivets

**Usage dates:**

Prior to 2/26/2024

Color	PN
Ebony	11862481
Bronze	11862482
Stone White	11862483
Gunmetal	11862484
Silver	11862485



## Screen Latch Receiver Assembly Kit

*Crank Out and Push Out*

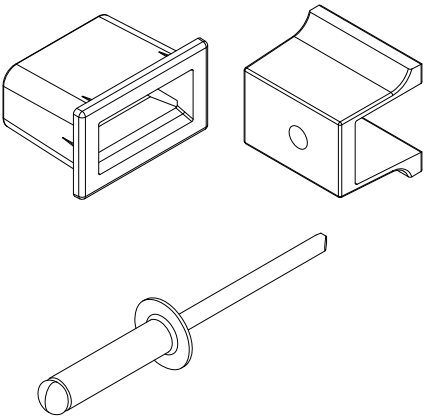
**Includes:**

- 1 - Screen hardware latch receiver
- 1 - Screen hardware receiver back
- 1 - Rivet

**Usage dates:**

Prior to 2/26/2024

Color	PN
Ebony	11862486
Bronze	11862487
Stone White	11862488
Gunmetal	11862489
Silver	11862490



# T20 Torx Tamper-Proof Custodial Bit

*Crank Out, Push Out and Automated*

PN
02071481

