



Vivid Direct Glaze Door Transom

Replacement Parts

Specifications and technical data are subject to change without notice.

Numbers listed in () parentheses are metric equivalents in millimeters rounded to the nearest whole number.

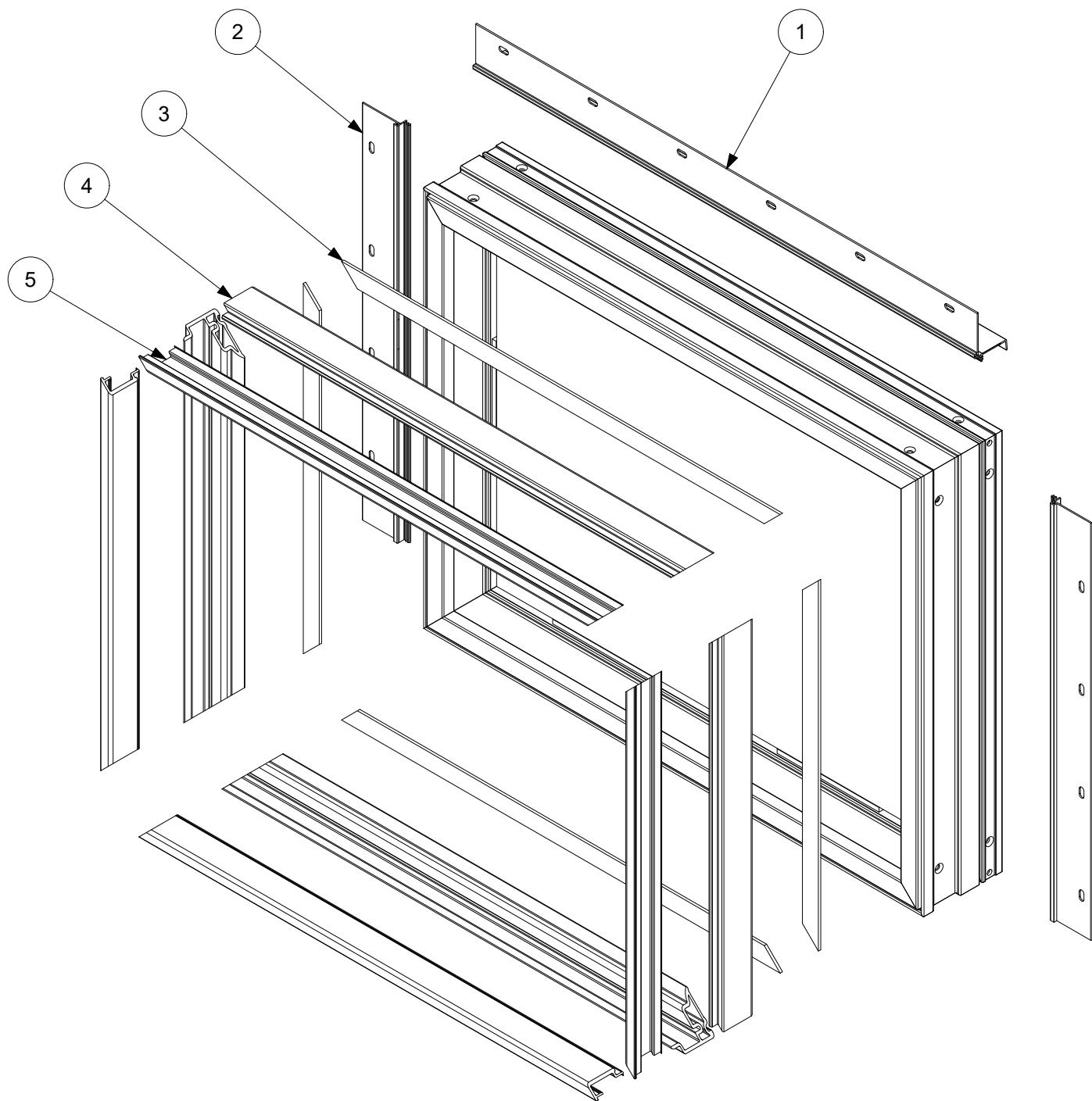
Suggested fasteners are not included and must be ordered separately.

Illustrations are not to scale.

Contents

Product History.....	2
Part Identification.....	3
Glass Replacement - Configured Parts in OMS	4
Frame Parts.....	5
Mull Kits.....	6
Mulling Parts.....	9

Produced	Unit Type	Features and Changes
2025	Direct Glaze Door Transom	09/29/2025: Introduced Vivid Direct Glaze Door Transom



1. Hinged Head Jamb Nailing Fin/
Drip Cap, V119
2. Hinged Jamb Nailing Fin, V104
3. Glazing Tape
4. Glazing Bead, V2123/V3046
5. Screw Cover, V2122/V3042

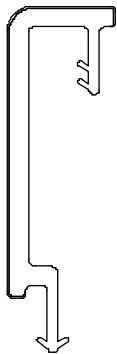
For replacement glass (use all that apply):

1. OM of frame or glass
2. Glazing
3. Interior color
4. GBG or SDL pattern

Screw Cover

V2122/V3042

Length	Color	PN
192" (4877)	Stone White	159122
	Ebony	163192

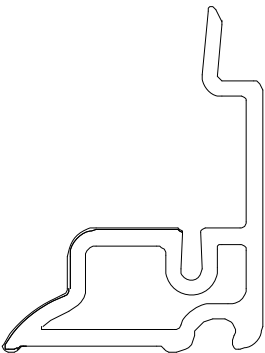


Glazing Bead

V2123/V3046

NOTE: Glazing tape must be ordered separately

Length	Color	PN
192" (4877)	Stone White	166192
	Ebony	168192

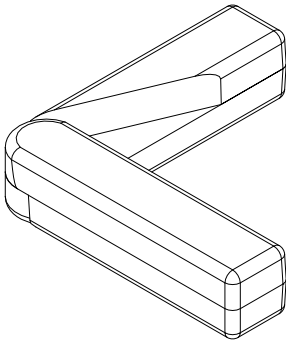


Mull Kits -Vivid Sliding French Door, Vivid Sliding Patio Door

To specify the correct part number you will need to supply width and height of the unit, configuration, interior finish and product type.

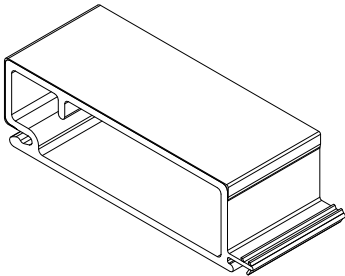
NOTE: Refer to the Mull Kit Component list section for details on what is included with each kit.

Kit	Length	Size	Exterior Color	Interior Color	PN
Vivid Sliding French Door, Vivid Sliding Patio Door to Vivid Direct Glaze Door Transom	71 1/2" (1816)	CN60	Stone White	Stone White	11810711
			Pebble		11810712
			Bronze		11810713
			Ebony		11810714
			Ebony	Ebony	11810715
	106 1/2" (2705)	CN90	Stone White	Stone White	11810511
			Pebble		11810512
			Bronze		11810513
			Ebony		11810514
			Ebony	Ebony	11810515

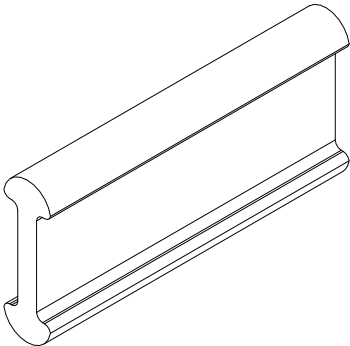


2" Pivoting Corner Key

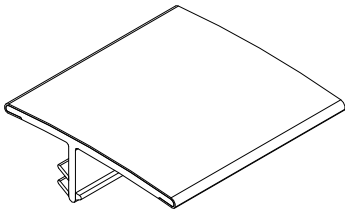
Component ID List
Component
1 - Exterior Mull Cover
2 - Header/Sill Mull Spacer
2 - Jamb Mull Spacer
1 - Aluminum Mull Pin
1 - Interior Mull Cap
1 - Mull Tape
2 - Nail Fin Connector Gasket
4 - 2" Pivoting Corner Key
8 - #6-20 x .563 Type AB Full Thread Screw (118020)
12 - #8 x 1.250 Type A-17 Full Thread Screw (11800557)
4 - #8-18 x 3" Phillips Pan Head Screw (11800829)



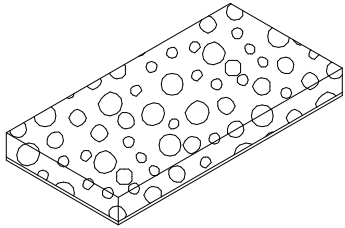
Jamb/Header/Sill Mull Spacer



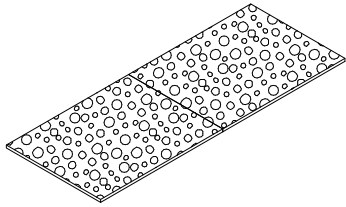
Aluminum Mull Pin



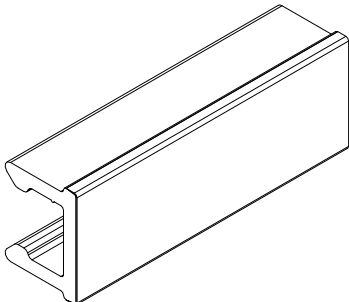
Interior Mull Cover



Mull Tape



Nail Fin Connector Gasket



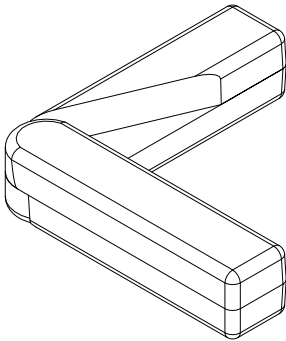
Exterior Mull Cover

Mull Kits - Vivid Inswing French Door, Vivid Outswing French Door

To specify the correct part number you will need to supply width and height of the unit, configuration, interior finish and product type.

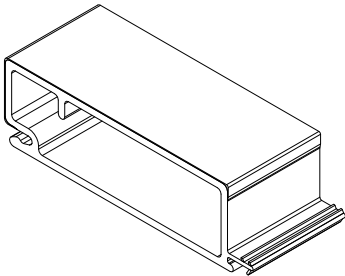
NOTE: Refer to the Mull Kit Component list section for details on what is included with each kit.

Kit	Length	Size	Exterior Color	Interior Color	PN
Vivid Outswing French Door Vivid Inswing French Door to Vivid Direct Glaze Door Transom	71 1/2" (1816)	CN60	Stone White	Stone White	11810611
			Pebble		11810612
			Bronze		11810613
			Ebony		11810614
			Ebony	Ebony	11810615
	106 1/2" (2705)	CN90	Stone White	Stone White	11810411
			Pebble		11810412
			Bronze		11810413
			Ebony		11810414
			Ebony	Ebony	11810415

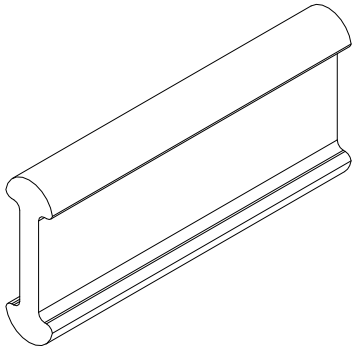


2" Pivoting Corner Key

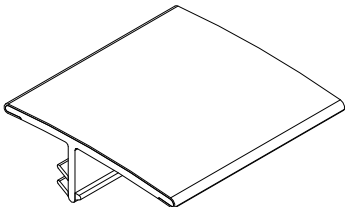
Component ID List
Component
1 - Exterior Mull Cover
2 - Header/Sill Mull Spacer
2 - Jamb Mull Spacer
1 - Aluminum Mull Pin
1 - Interior Mull Cap
1 - Mull Tape
2 - Nail Fin Connector Gasket
4 - 2" Pivoting Corner Key
8 - #6-20 x .563 Type AB Full Thread Screw (118020)
12 - #8 x 1.250 Type A-17 Full Thread Screw (11800557)
2 - #8-18 x 3" Phillips Pan Head Screw (11800829)
2 - #8-15 x 2 1/2" Type A/TF, 2/3 Thread Screw (11800648)



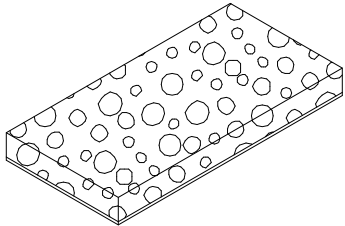
Jamb/Header/Sill Mull Spacer



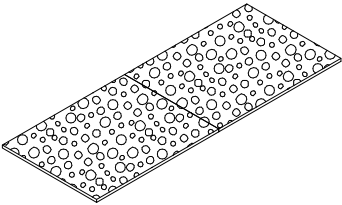
Aluminum Mull Pin



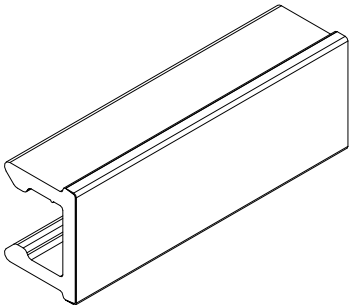
Interior Mull Cover



Mull Tape



Nail Fin Connector Gasket



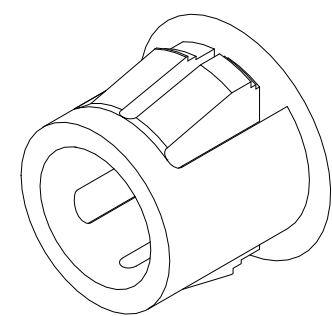
Exterior Mull Cover

Vivid Outswing Door Supplemental Mull Kit

Includes:

- 10 - #8-18 x 5/8" Type A/Tek-2, full thread screws
- 2 - #8-18 x 3" Type AB, full thread screws
- 1 - Jamb Filler Hole Plug

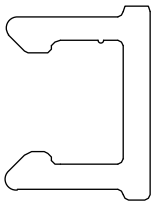
Interior Color	PN
Stone White	11810311
Ebony	11810312



Exterior Mull Cover

V1213

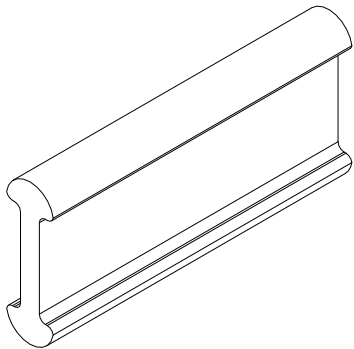
Length	Color and Part Number			
120" (3048)	Stone White	Pebble	Bronze	Ebony
	153099	153399	153699	1539199



Mull Pin

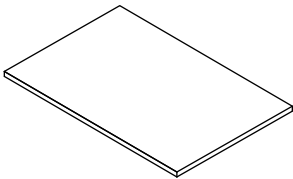
A330

Length	PN
150" (3810)	11103250



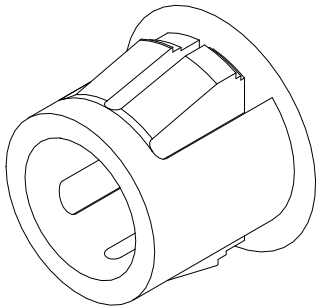
Nailing Fin Connector

Color	PN
White	10500213



Jamb Filler Hole Plug

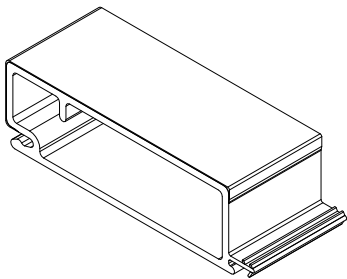
Color	PN
Stone White	11892507
Ebony	11892511



Mull Spacer

V2669

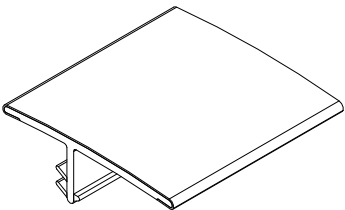
Length	Color	PN
192" (4877)	Stone White	12895192
	Ebony	12893192



Interior Mull Cap

V2668

Length	Color	PN
192" (4877)	Stone White	11895192
	Ebony	11892192



Mull Tape

Length	PN
120"	11869120

