



# Ultimate and Ultimate Wood Lift and Slide Door

## Replacement Parts

Specifications and technical data are subject to change without notice.

Numbers listed in ( ) parentheses are metric equivalents in millimeters rounded to the nearest whole number.

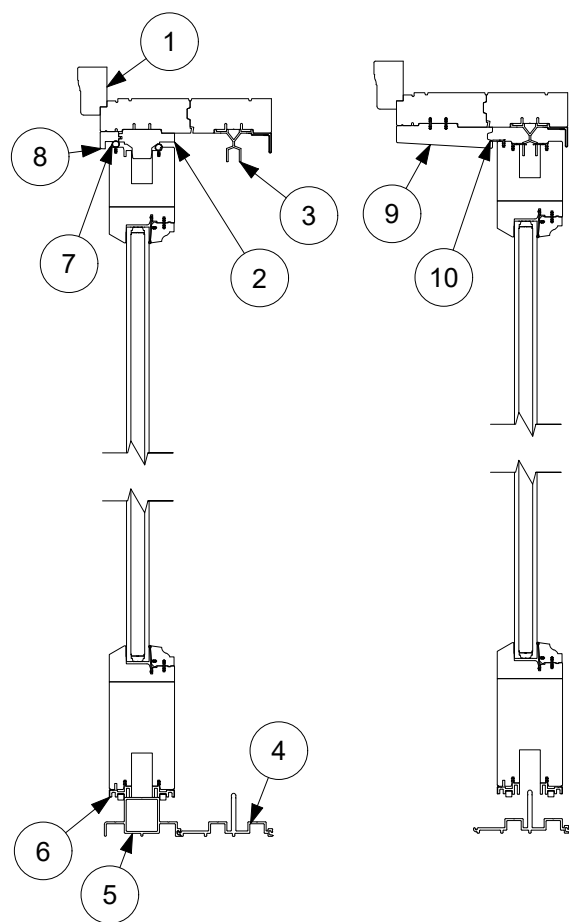
Suggested fasteners are not included and must be ordered separately.

Illustrations are not to scale.

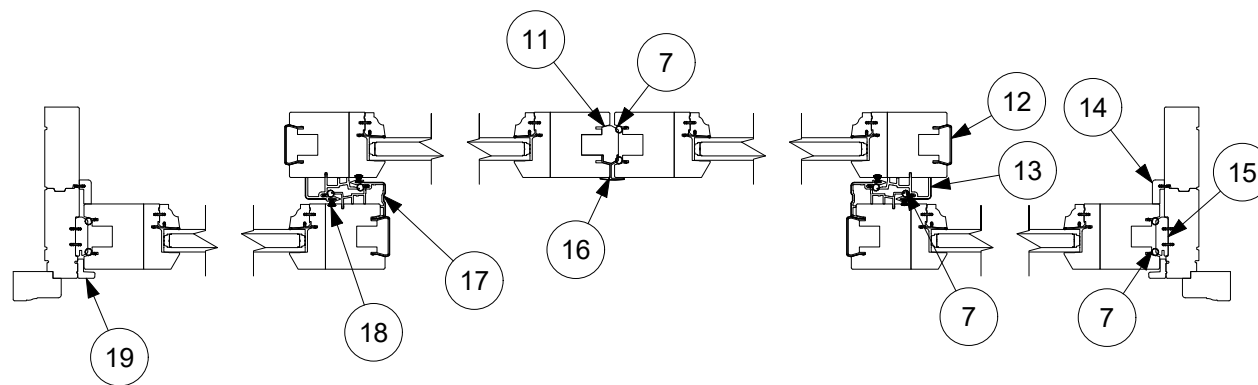
## Contents

Product History.....	2
Part ID - Ultimate Wood - Stacked - Short Bottom Rail - OX-XO.....	3
Part ID - Ultimate Wood - Pocket - PXX-XXP .....	4
Part ID - Ultimate Wood - Pocket - Short Bottom Rail - XXXP .....	5
Part ID - Ultimate Wood - Stacked - XXO .....	6
Part ID - Ultimate - Short Bottom Rail - Stacked - OX-XO.....	7
Part ID - Ultimate - Pocket - PXX-XXP .....	8
Part ID - Ultimate - Pocket - Short Bottom Rail - XXXP .....	9
Part ID - Ultimate - Stacked - XXO .....	10
Part ID - Performance Sill Option.....	11
Installation Parts.....	12
Handles .....	13
Miscellaneous Parts .....	15
Miscellaneous Parts - No Longer Available - DISC-NA .....	24
Aluminum and Wood Wrap Parts.....	25
Vinyl Parts.....	28
Wood Parts.....	29
Weather Strip .....	31
Weather Strip - No Longer Available - DISC-NA.....	32
Replacement Sills .....	33
Performance Sill Parts .....	34
Performance Sill Parts - No Longer Available - DISC-NA.....	39
Panel Replacement for Stacked Doors .....	40
Panel Replacement for Pocket Doors .....	41

Produced	Unit Type	Features and Changes
2009	Ultimate and Ultimate Wood Lift and Slide Door	5/26/2009: Released the Ultimate and Ultimate Wood Lift and Slide door. Available in Stacked or Pocket configurations.
2011	Ultimate and Ultimate Wood Lift and Slide Door	2/11/2011: Updated illustrations to show the new modular frame. 4/25/2011: Added LoE-180 as a standard option and White painted interior finish for all products. 7/28/2011: Introduced the Performance Sill option
2012	Ultimate and Ultimate Wood Lift and Slide Door	4/3/2012: The base operating hardware changed from Siegenia hardware to HauTau hardware. 12/17/2012: Introduced Clear interior finish option on all products.
2013	Ultimate and Ultimate Wood Lift and Slide Door	04/29/2013 Introduced interior stain options. Stain colors are Wheat, Honey, Leather, Hazelnut, Cabernet and Espresso.
2014	Ultimate and Ultimate Wood Lift and Slide Door	01/20/2014: Interior and Exterior Interlocks redesigned. See Field Service Bulletin 146 for more information.
2019	Ultimate and Ultimate Wood Lift and Slide Door	04/29/2019: V1194 replaces V1138 (ECN 23234)



Head Jamb and Sill

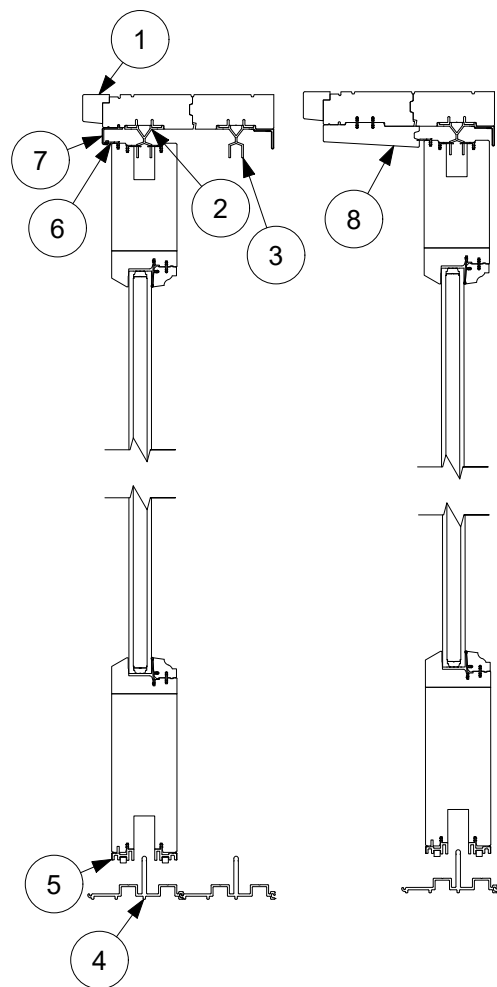


Jamb

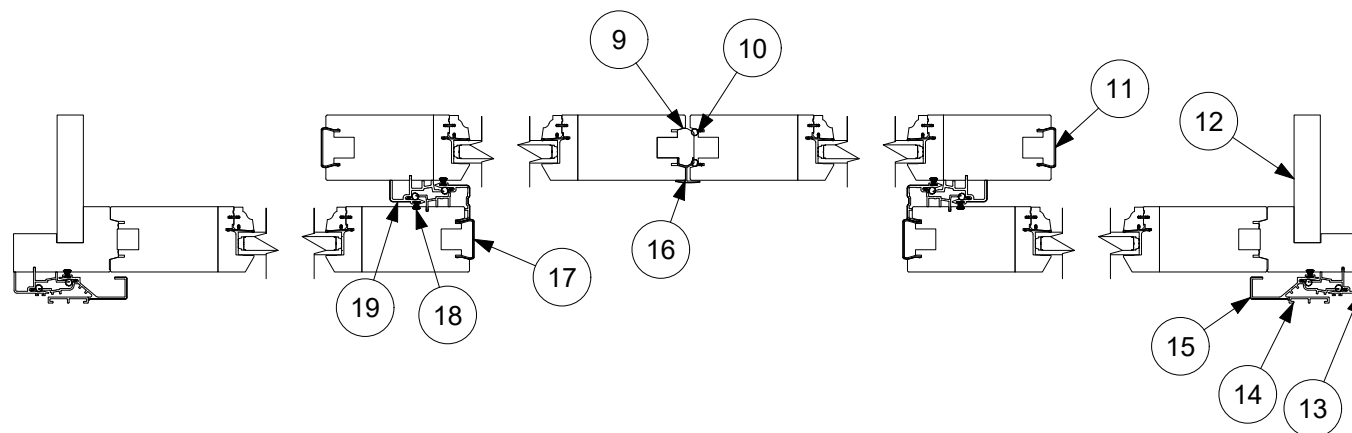
1. Brick Mould Casing, W1047
2. Stationary Head Jamb Panel Retainer, W10113
3. Header Guide, Interior Wood Wrap, C0050
4. Recessed Sill
5. Recessed Stationary Block, A1812
6. Panel Sweep, C0059
7. Weather Strip, V147

8. Stationary Head Jamb Filler, W10110
9. Part Stop, Exterior, W10090
10. Guide Rail Weather Strip, V1785
11. Inactive Panel Locking Base, W10444
12. Stile Edge Cover, Wood Wrap, C0026
13. Interior Interlock with Wood Wrap, C0111
14. Stationary Jamb Cover, W10088

15. Jamb Keeper Guide, W10089
16. Astragal, Wood Wrap, C0060
17. Exterior Interlock with Wood Wrap, C0106
18. Pile Weather Strip
19. Stationary Jamb Cover, Exterior, W10114



Head Jamb and Sill

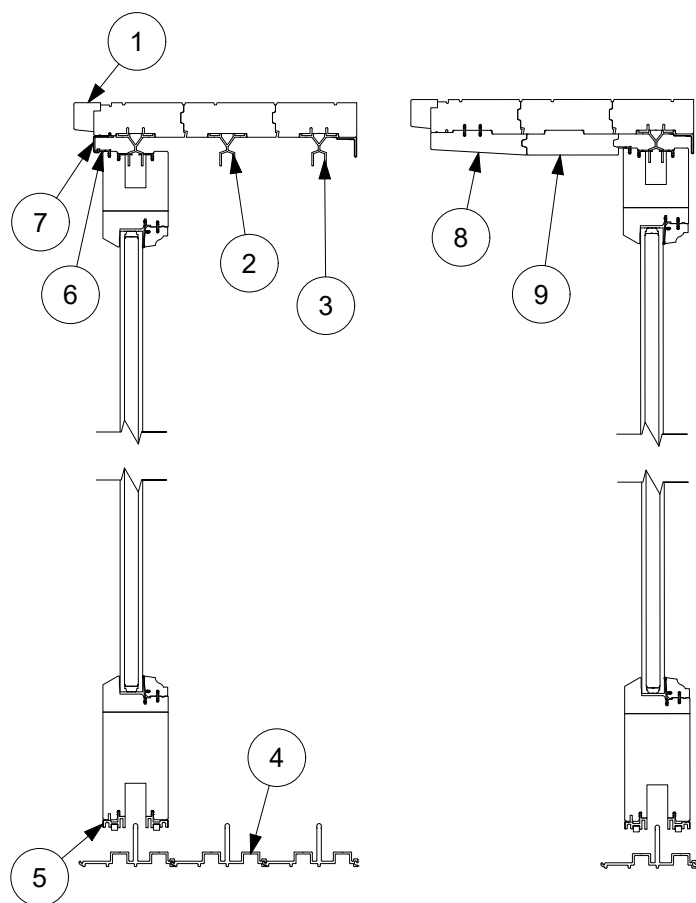


Jamb

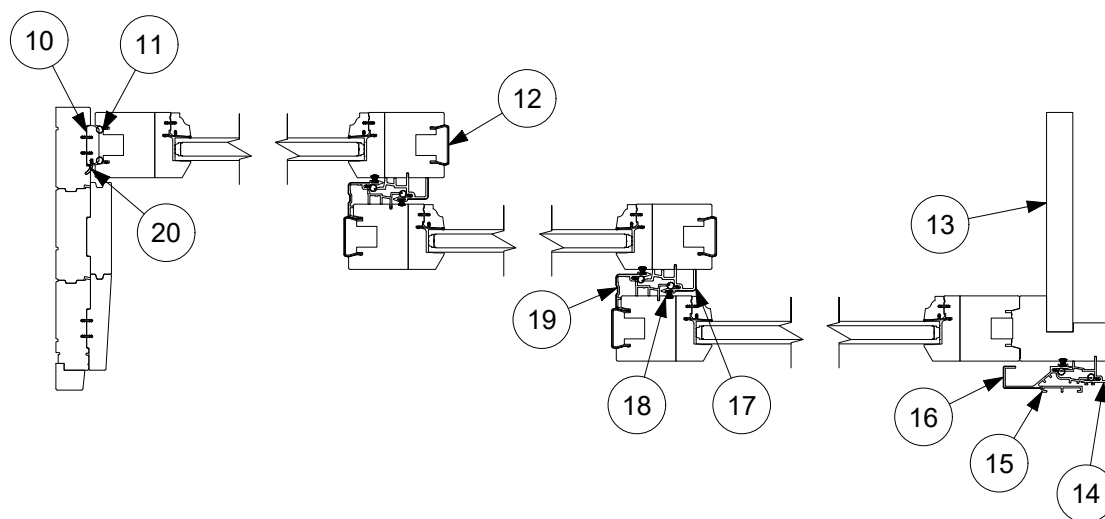
1. Head Jamb Extension, Pocket, W10399
2. Header Guide, A1654
3. Header Guide, Interior Wood Wrap, C0050
4. Recessed Sill
5. Panel Sweep, C0059
6. Guide Rail Weather Strip, V1785
7. Pocket Panel Part Stop, C0057

8. Part Stop, Exterior, W10090
9. Inactive Panel Locking Base, W10444
10. Weather Strip, V147
11. Stile Edge Cover, Wood Wrap, C0026
12. Pocket Cover, 2 Deep, W10264
13. Interlock, Pocket Panel, A1658

14. Pocket Interlock Base, A1792
15. Pocket Interlock, Wood Wrap, C0056
16. Astragal, Wood Wrap, C0060
17. Interlock Exterior, Wood Wrap, C0106
18. Pile Weather Strip
19. Interlock Interior, Wood Wrap, C0111



Head Jamb and Sill

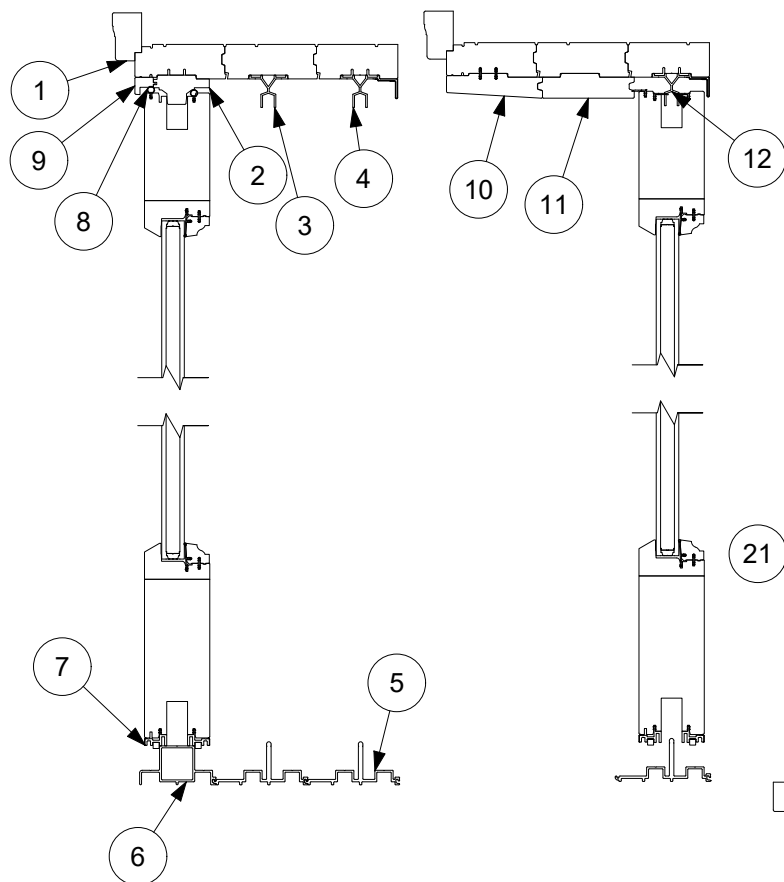


Jamb

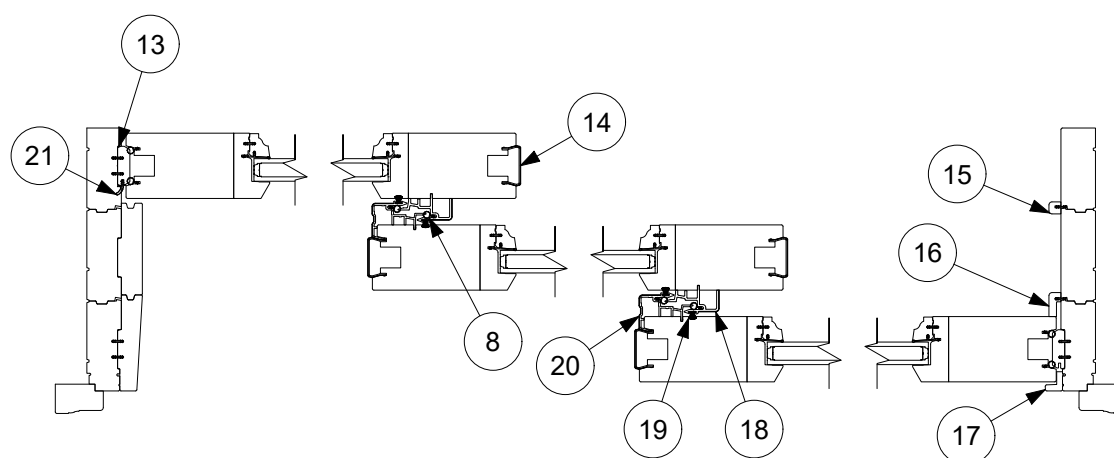
1. Head Jamb Extension, Pocket, W10399
2. Header Guide, A1654
3. Header Guide, Interior Wood Wrap, C0050
4. Recessed Sill
5. Panel Sweep, C0059
6. Guide Rail Weather Strip, V1785
7. Pocket Panel Part Stop, C0057

8. Part Stop, Exterior, W10090
9. Part Stop, Flat, W10111
10. Jamb Keeper Guide, W10089
11. Weather Strip (Panel), V147
12. Stile Edge Cover, Wood Wrap, C0026
13. Pocket Cover, W10406 (3 Deep)
14. Interlock, Pocket Panel, A1658

15. Pocket Interlock Base, A1792
16. Pocket Interlock, Wood Wrap, C0056
17. Interlock, Interior, Wood Wrap, C0111
18. Pile Weather Strip
19. Interlock Exterior, Wood Wrap, C0106
20. Weather Strip, V1194



Head Jamb and Sill

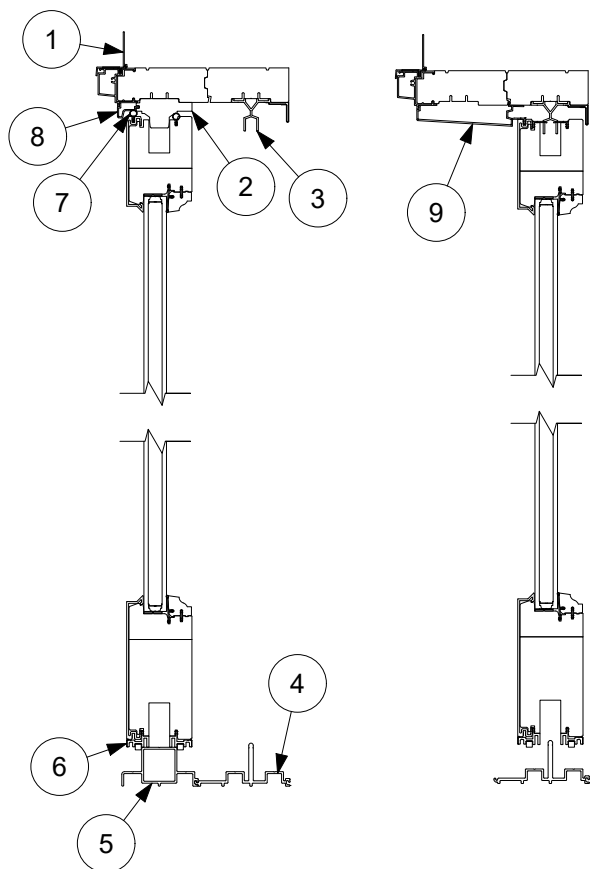


Jamb

1. Brick Mould Casing, W1047
2. Stationary Head Jamb Panel Retainer, W10113
3. Header Guide, A1654
4. Header Guide, Interior Wood Wrap, C0050
5. Recessed Sill
6. Recessed Stationary Block, A1821
7. Panel Sweep, C0059

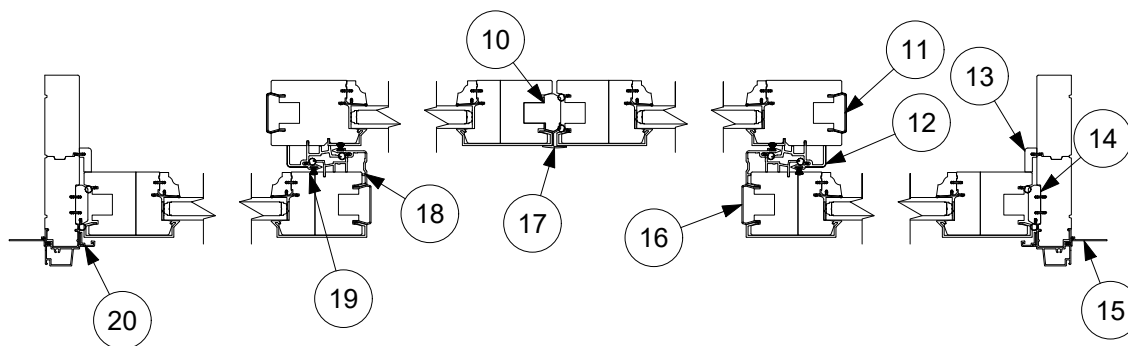
8. Weather Strip (Panel), V147
9. Stationary Head Jamb Filler, W10110
10. Part Stop, Exterior, W10090
11. Part Stop, Flat, W10111
12. Guide Rail Weather Strip, V1785
13. Jamb Keeper Guide, W10089
14. Stile Edge Cover, Wood Wrap, C0026

15. Stationary Jamb, Blank Cover, W10112
16. Stationary Jamb Cover, W10088
17. Stationary Jamb Cover Ext, W10114
18. Interlock Exterior, Wood Wrap, C0106
19. Pile Weather Strip
20. Interlock Interior, Wood Wrap, C0111
21. Weather Strip, V1194



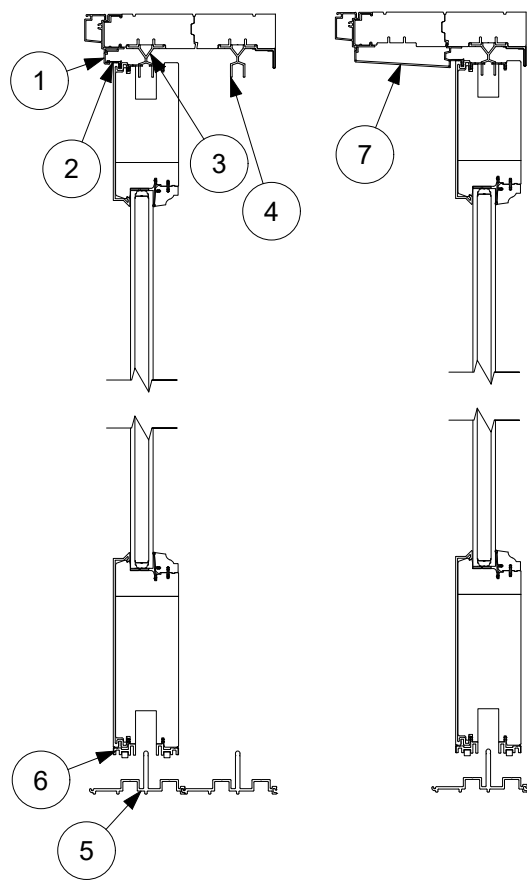
Head Jamb and Sill

1. Head Jamb Nailing Fin, V119
2. Stationary Head Jamb Panel Retainer, W10113
3. Header Guide, Interior Wood Wrap, C0050
4. Recessed Sill
5. Recessed Stationary Block, A1821
6. Panel Sweep, C0059
7. Weather Strip (Panel), V147

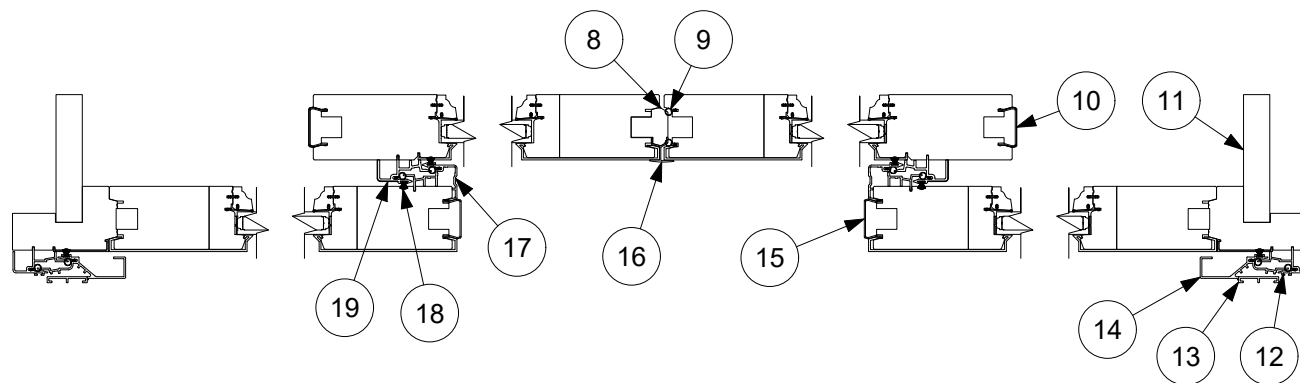


Jamb

8. Stationary Head Jamb Filler, A1723
9. Part Stop Exterior A1724
10. Inactive Locking Base, W10444
11. Stile Edge Cover Wood Wrap, C0026
12. Interlock Interior Wood Wrap, C0111
13. Stationary Jamb Cover, W10088
14. Jamb Keeper Guide, W10089
15. Jamb Nailing Fin, V104
16. Stile Edge Cover, A1641
17. Astragal, A1811
18. Interlock Exterior, A2602
19. Pile Weather Strip
20. Stationary Jamb Part Stop, A1722



Head Jamb and Sill

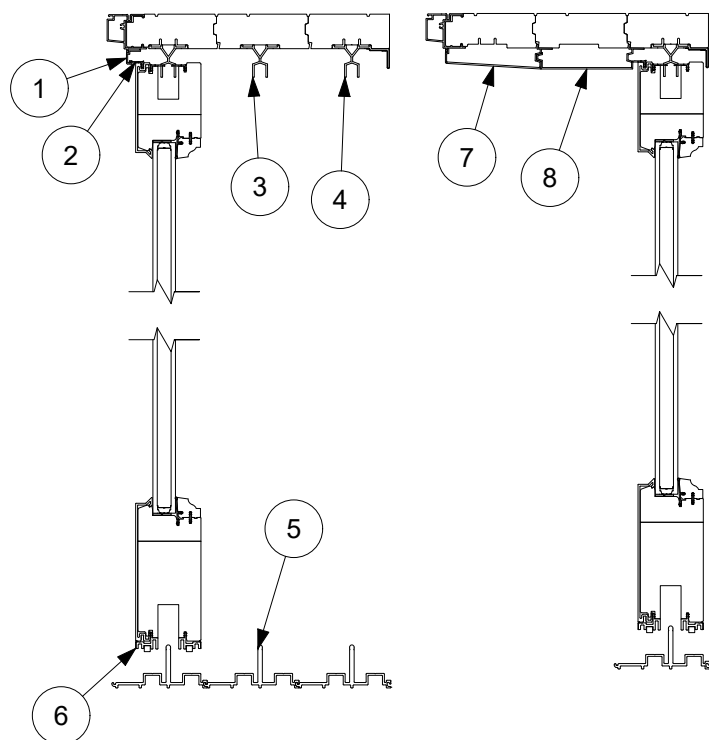


Jamb

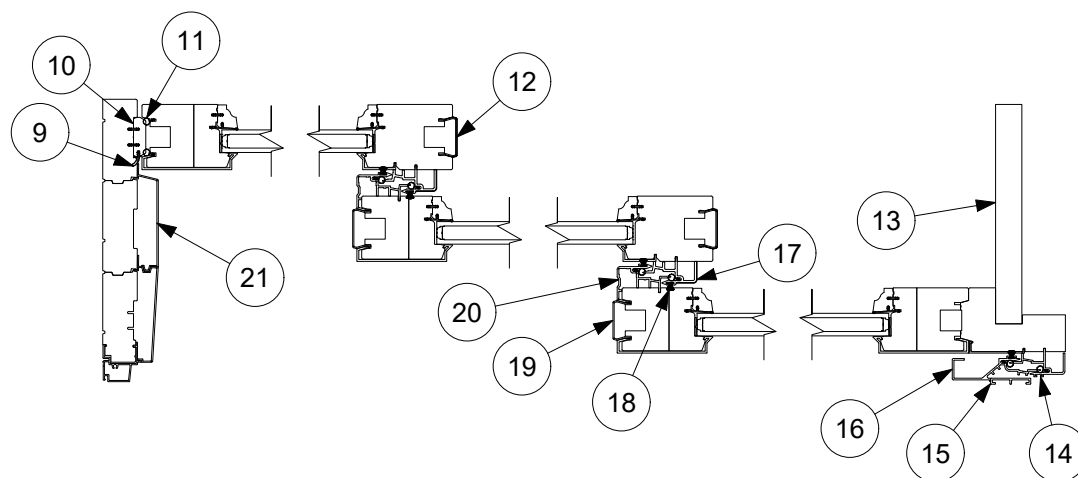
1. Stationary Jamb Part Stop, A1722
2. Guide Rail Weather Strip, V1785
3. Header Guide, A1654
4. Header Guide, Interior Wood Wrap, C0050
5. Recessed Sill
6. Panel Sweep, C0059
7. Part Stop, Exterior, A1724

8. Inactive Locking Base, W10444
9. Weather Strip (Panel), V147
10. Stile Edge Cover, Wood Wrap, C0026
11. Pocket Cover, 2 Deep, W10264
12. Interlock Interior, Pocket Panel, A1658
13. Pocket Interlock Base, A1792

14. Pocket Interlock, A1793
15. Stile Edge Cover, A1641
16. Astragal, A1811
17. Interlock Exterior, A2602
18. Pile Weather Strip
19. Interlock Interior, Wood Wrap, C0111



Jead Jamb and Sill

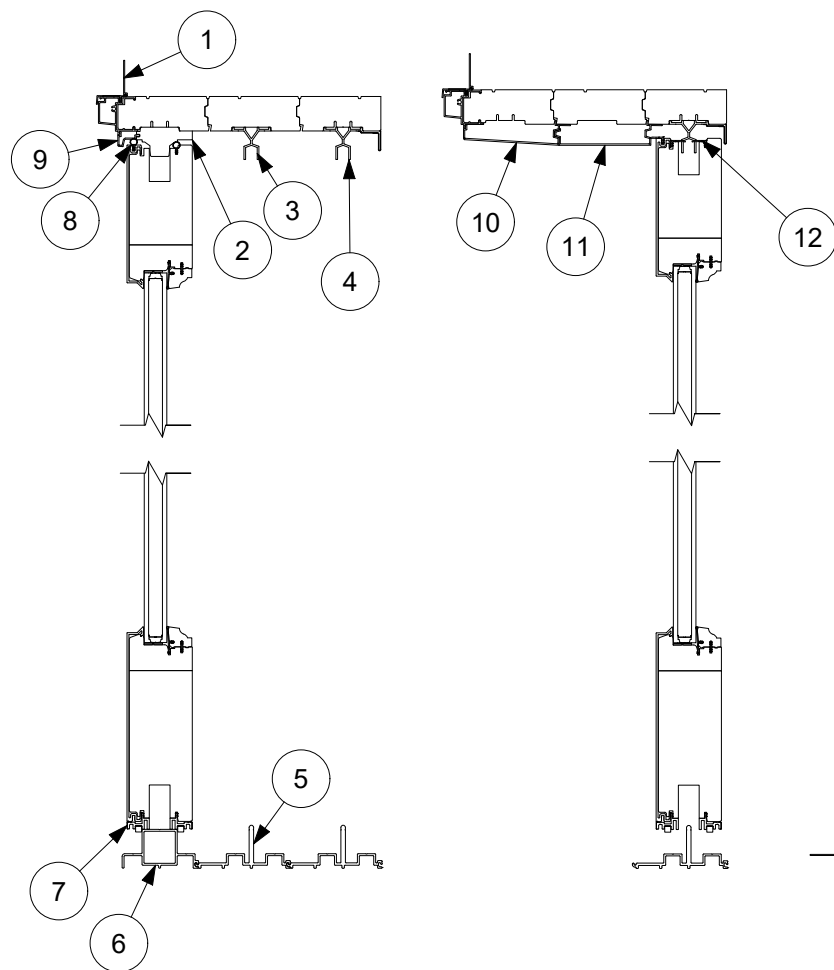


Jamb

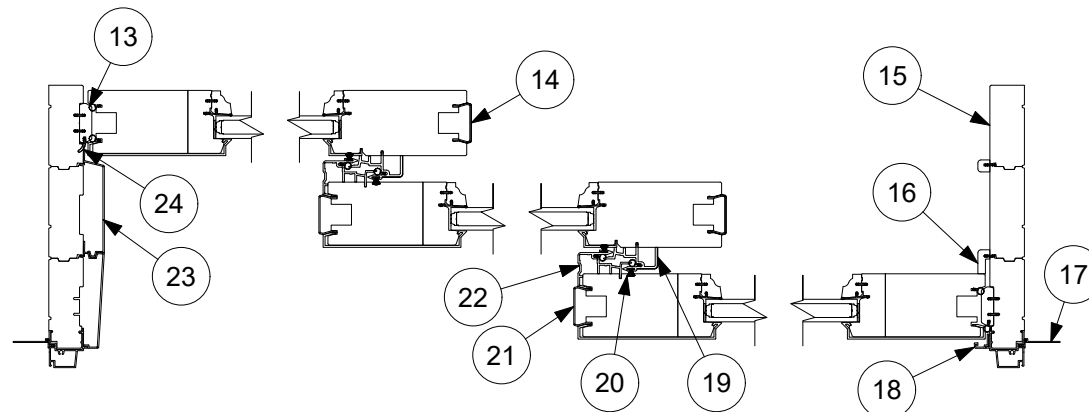
1. Stationary Jamb Part Stop, A1722
2. Guide Rail Weather Strip, V1785
3. Header Guide, A1654
4. Header Guide, Interior Wood Wrap, C0050
5. Recessed sill
6. Panel Sweep, C0059
7. Part Stop, Exterior, A1724

8. Part Stop, Flat, A1656
9. Weather Strip, V1194
10. Jamb Keeper Guide, W10089
11. Weather Strip (Panel), V147
12. Stile Edge Cover, Wood Wrap, C0026
13. Pocket Cover, 3 Deep, W10406
14. Interlock Interior, A1658

15. Pocket Interlock Base, A1792
16. Pocket Interlock, A1793
17. Interlock Interior, Wood Wrap, C0111
18. Pile Weather Strip
19. Stile Edge Cover, A1641
20. Interlock Exterior, A2602
21. Part Stop with Lead In, A3019



Head Jamb and Sill

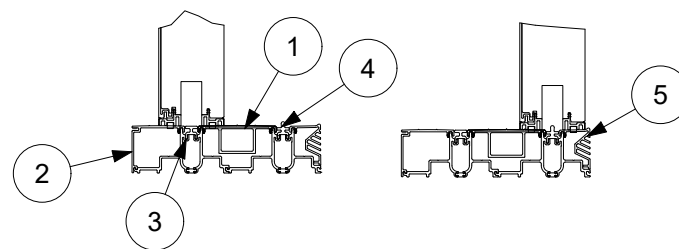


Jamb

1. Head Jamb Nailing Fin, V119
2. Stationary Head Jamb Panel Retainer, W10113
3. Header Guide, A1654
4. Header Guide, Interior Wood Wrap, C0050
5. Recessed Sill
6. Recessed Stationary Block, A1821
7. Panel Sweep, C0059
8. Weather Strip (Panel), V147

9. Stationary Head Jamb Filler, A1723
10. Part Stop, Exterior, A1724
11. Part Stop, Flat, A1656
12. Guide Rail Weather Strip, V1785
13. Jamb Keeper Guide, W10089
14. Stile Edge Cover, Wood Wrap, C0026
15. Stationary Jamb, Blank Cover, W10112
16. Stationary Jamb Cover, W10088

17. Jamb Nailing Fin, V104
18. Stationary Jamb Part Stop, A1722
19. Interlock Interior, Wood Wrap, C0111
20. Pile Weather Strip
21. Stile Edge Cover, A1641
22. Interlock Exterior, A2602
23. Part Stop with Lead In, A3019
24. Weather Strip, V1194

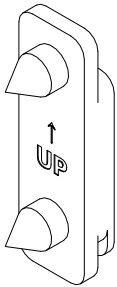


Performance Sill Option

1. Sill Cover, Middle, with Gasket, A1937
2. Sill Cover, Pocket, with Gasket, A1938
3. Thermal Break Filler, V2084
4. Thermal Break Roller Track, V2083
5. Sill Cover, Interior, with Fins and Gasket, A2169

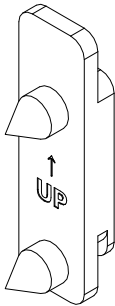
## Key Fixed Handle Lock Bolt Jig

PN
02102388



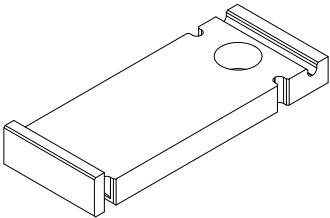
## Flush Handle Lock Bolt Jig

PN
02102387



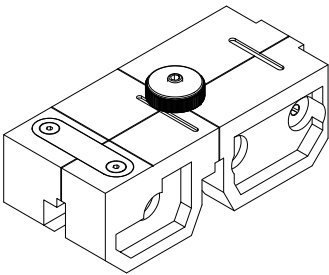
## Stationary Block Level Fixture

PN
11860027



## Sill Leveling Fixture Assembly

PN
10500839

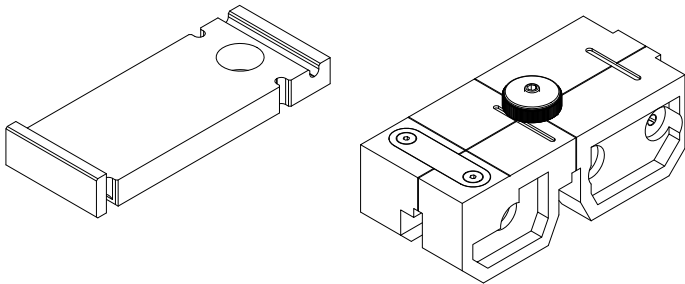


## Sill Installation Kit

### Includes:

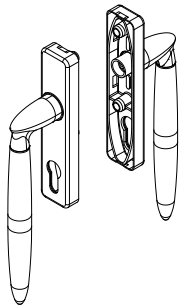
- 1 - Stationary Block Level Fixture
- 1 - Sill Leveling Fixture
- 1 - T-handle Allen wrench 5/32"
- 1 - T-handle Allen wrench 1/4"
- 1 - Case, Pelican 1150

PN
10500829



## Keyed Fixed Handle

Color	PN
Oil Rubbed Bronze PVD	02102250
Satin Nickel PVD	02102251
Brass PVD	02102252



## Interior Finger Pull Kit

### Includes:

2 - #8-18 x 1" AB full thread screws  
Stainless Steel (11800645), Brass (11800651)  
or Dark Bronze (11800652)

Color	PN
Oil Rubbed Bronze PVD	11102143
Satin Nickel PVD	11102144
Brass PVD	11102145

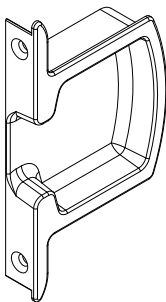


## Exterior Finger Pull Kit

### Includes:

2 - #8-18 x 1" AB full thread screws  
Stainless Steel (11800645), Brass (11800651)  
or Dark Bronze (11800652)

Color	PN
Oil Rubbed Bronze PVD	11102146
Satin Nickel PVD	11102147
Brass PVD	11102148



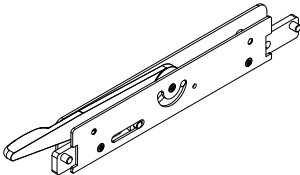
## Lever Case, Flush Mount Handle Kit

From exterior: if panels operate to the left to open, then a LH part is needed. If panels operate to the right, then a RH part is needed.

### Includes:

2 - #8-18 x 1" AB full thread screws (11800645)

Color	Handing	PN
Bronze PVD	LH	11102125
	RH	11102126
Satin Nickel PVD	LH	11102127
	RH	11102128
Brass PVD	LH	11102129
	RH	11102130

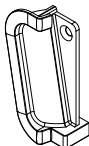


## Finger Well, Flush Mount Handle Kit

### Includes:

2 - #8-18 x 1" AB full thread screws  
Stainless Steel (11800645), Brass (11800651) or  
Dark Bronze (11800652)

Color	Handing	PN
Bronze PVD	LH Top/RH Btm	11102131
	LH Btm/RH Top	11102132
Satin Nickel PVD	LH Top/RH Btm	11102133
	LH Btm/RH Top	11102134
Brass PVD	LH Top/RH Btm	11102136
	LH Btm/RH Top	11102135



LH Top  
RH Btm



LH Btm  
RH Top

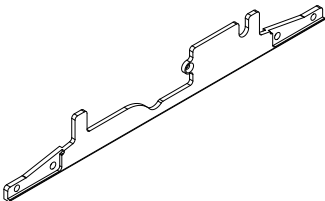
## Filler Plate, Flush Mount Handle Kit

From exterior: if panels operate to the left to open, then a LH part is needed. If panels operate to the right, then a RH part is needed.

### Includes:

2 - #8-15 x 1 1/2" Type A/TF 2/3 thread screw (11881120)

Color	Handing	PN
Bronze PVD	LH	11102137
	RH	11102138
Satin Nickel PVD	LH	11102139
	RH	11102140
Brass PVD	LH	11102141
	RH	11102142



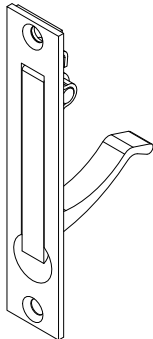
## Edge Pull

Bi-Parting Inactive Panel

### Includes:

2 - #8-18 x 1" Type AB full thread screws (11800625)

Color	PN
Satin Chrome	02102384

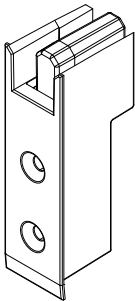


## Header Guide

**Includes:**

2 - #8-15 x 2 1/2" Type A/TF 2/3 thread screws  
Stainless Steel (11800648), or Dark Bronze (11800124)

Color	PN
Gray	02102128
Bronze	02102123

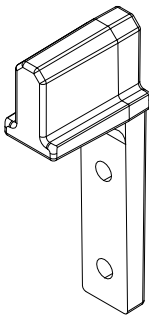


## Header Guide Insert, Pocket Doors

**Includes:**

2 - #8-15 x 2 1/2" Type A/TF 2/3 thread screws  
Stainless Steel (11800648), or Dark Bronze (11800124)

PN
02102118

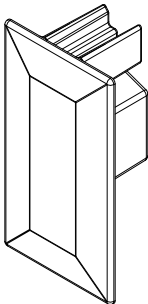


## Header Guide End Cap Cover

**Includes:**

2 - #8-15 x 2 1/2" Type A/TF 2/3 thread screws  
Stainless Steel (11800648), or Dark Bronze (11800124)

Color	PN
Bronze	02102119

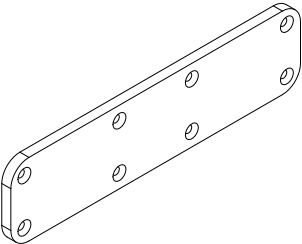


## Splice Bracket, Head Jamb

**Includes:**

2 - #8-18 x 1 1/4" Phillips flat head screws (11808114)

PN
02102126



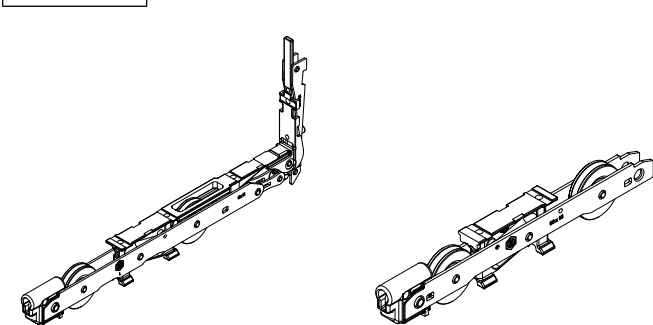
## Standard Corner/Straight Bogie

Usage Dates: 10/22/2018 to present

**Includes:**

- 4 (for Std) or 2 (for Straight) - #10-12 x 2" Phillips flat head screws (02056012)
- 2 - M8 x 16 screw
- 1 - M5 x 13 screw

PN
02102425



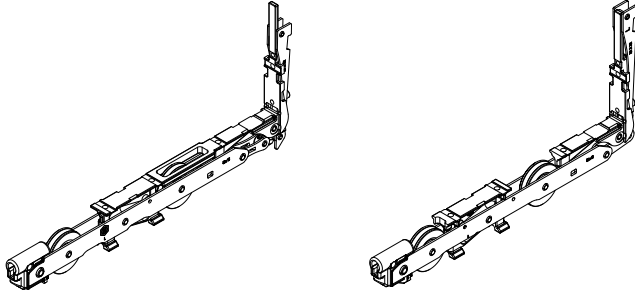
## Standard Corner/Reverse Bogie

Usage Dates: 10/22/2018 to present

**Includes:**

- 4 - #10-12 x 2" Phillips flat head screws - 02056012
- 2 - M8 x 16 screw
- 2 - M5 x 13 screw

PN
02102424



## Standard Gear

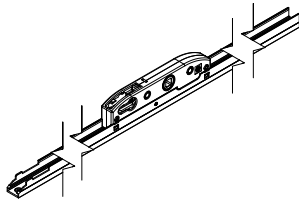
Usage Dates: 4/3/2012 to present

NOTE: For use with Keyed Fixed Handle

**Includes:**

- 8 - #10-12 x 2" Phillips FH screws
- Stainless Steel (02056012) or Bronze (02100426)

Color	PN
Silver	02102424
Bronze	02102412



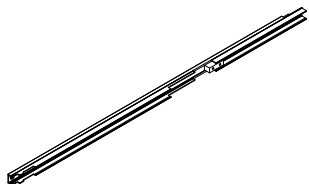
## Lever Side Cover Rail/Drive Rail

Usage Dates: 4/3/2012 to present

### Includes:

8 - #10-12 x 2" Phillips FH screws, Stainless Steel (02056012)

PN
11102191



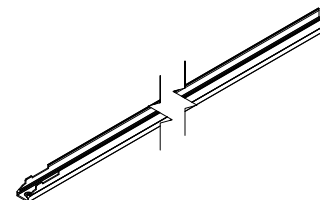
## Locking Side Cover Rail/Drive Rail

Usage Dates: 4/3/2012 to present

### Includes:

8 - #10-12 x 2" Phillips FH screws  
Stainless Steel (02056012) or Dark Bronze (02100426)

Color	PN
Silver	02102409
Bronze	02102410



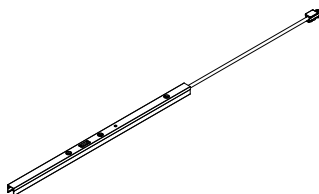
## Locking Side Cover Rail/Drive Rail Extension

Usage Dates: 4/3/2012 to present

### Includes:

2 to 3 - #10-12 x 2" Phillips FH screws  
Stainless Steel (02056012) or Dark Bronze (02100426)

Flush Handle	
Color	PN
Silver	02102420
Bronze	02102421



Fixed Keyed Handle	
Color	PN
Silver	02102422
Bronze	02102423

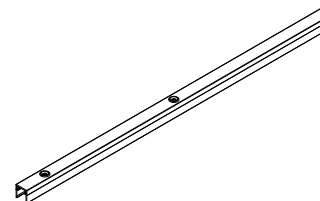
## Cover Rail Extension

Usage Dates: 4/3/2012 to present

### Includes:

1 to 2 - #10-12 x 2" Phillips FH screws  
Stainless Steel (02056012) or Bronze (02100426)

Color	PN
Silver	02102413
Black	02102414

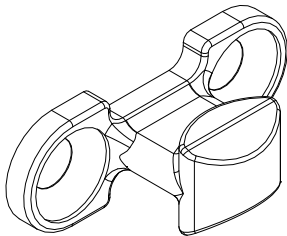


# Locking Bolt

Usage Dates: 4/3/2012 to present  
NOTE: For use with Keyed Fixed Handle

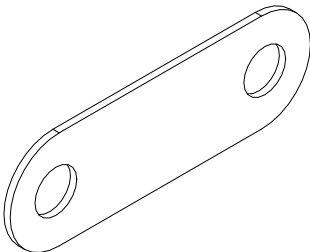
**Includes:**  
2 - #10-12 x 3", flat head, 2/3 thread screw (11801034)

PN
02102417



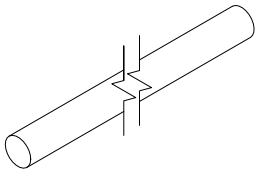
# Locking Bolt Shim

PN
02102127



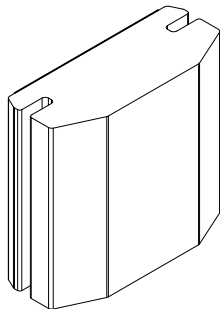
# Connecting Rod

Length	PN
Sold by LF (Specify length)	02102249



# Foam Seal

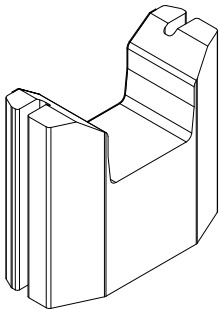
PN
10500086



# Foam Seal, Head Jamb, Stationary

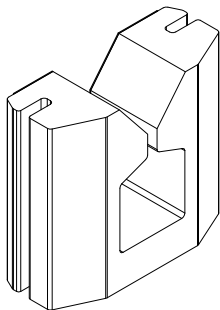
Stacked Door

PN
10500088



# Foam Seal, Head Jamb, Guide Track

PN
10500087



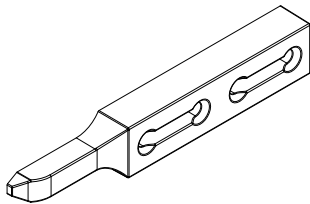
## Stationary Retainer, Flushed Bolt

Stationary Door

**Includes:**

2 - #8-15 x 2 1/2" Type A/TF 2/3 thread screws (11808212)

PN
02102115



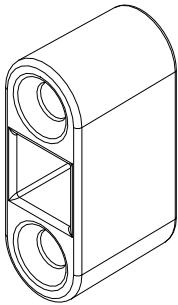
## Shoot Bolt Receiver

Stacked Door, Stationary Head Jamb

**Includes:**

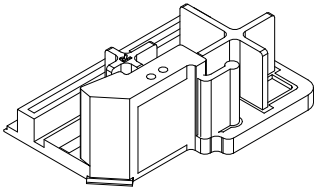
2 - #7-16 x 2" Type A/TF 2/3 thread screws (11800720)

Color	PN
Bronze	02102121



## Interlock Bottom Seal

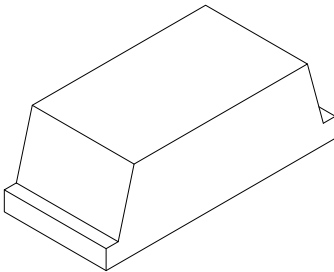
LH PN	RH PN
10500835	10500834



RH Shown

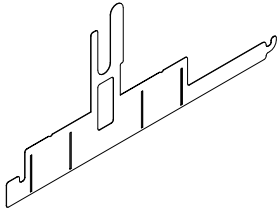
## Stile End Cover Foam Gasket

PN
10500056



## Recessed Sill Splice Gasket

PN
10500055

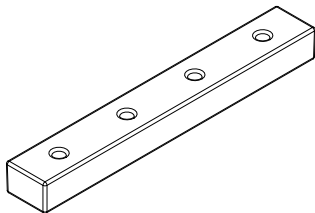


## Sill Splice Key

### Includes:

4 - #8-32 x 1/2" FH Self Tapping screws (02100325)

PN
02102114

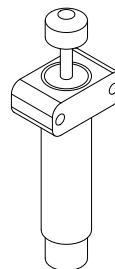


## Velocity Controller with Mounting Block

### Includes:

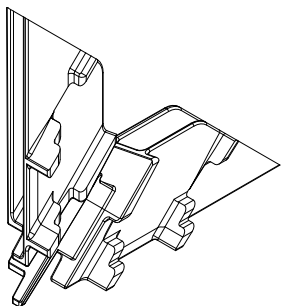
8 - #8-15 x 2 1/2" Type A/TF, 2/3 thread screw (11808212)

PN
02102276



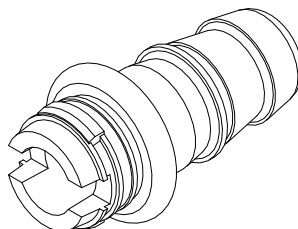
## Corner Key, Head Jamb

PN
02102282



## Drainage Connector

PN
02102277

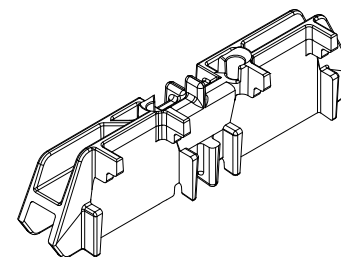


## Frame Splice Key

### Includes:

2 - #8-18 x 1" AB full thread screws (11800645)

PN
02102122

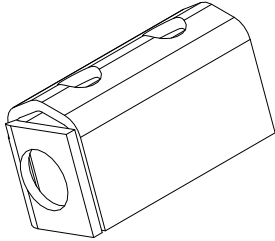


## Bumper Retainer

### Includes:

2 - #7-16 x 2" Type A/TF, 2/3 thread screw (11800720)

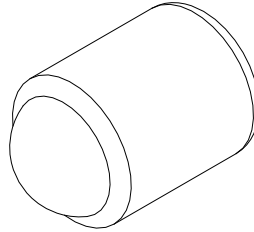
PN
02102125



## .438 Rubber Bumper

Pocket Door  
For use with Bumper Retainer

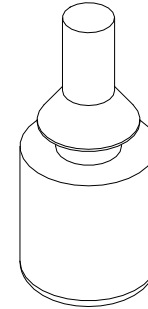
PN
02101074



## .500 Rubber Bumper

Stacked Door

PN
02101076



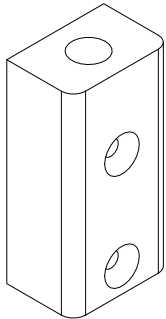
## Panel Wood Bumper Retainer

Stacked Door

### Includes:

2 - #8-18 x 1 1/2" Type A/TF 2/3 thread screws (11881120)

PN
71275100

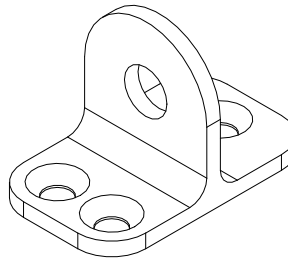


## Panel Bumper Retainer

### Includes:

3 - #8-18 x 1 1/2" screws (02058013)

PN
02102116



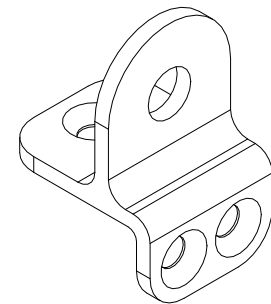
## Panel Bumper Retainer, Short Bottom Rail

### Includes:

2 - #8-15 x 2 1/2" Type A/TF, 2/3 thread screws (11800124)

1 - #8-15 x 7/8" PH flat, AB screw (02100425)

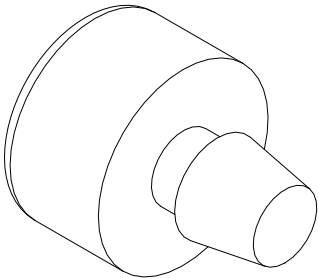
PN
02102117



# .625 Rubber Bumper

For use with Panel Bumper Retainer

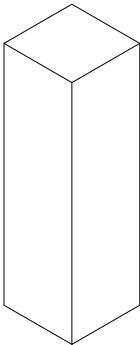
PN
02101075



# Pocket Interlock Seal Backer

Pocket Door

PN
10500085



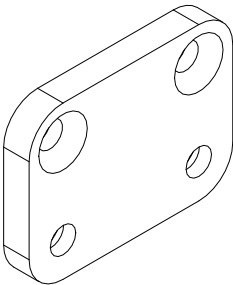
# Stationary Bracket

Stacked Door

**Includes:**

4 - #8-18 x 1 1/2" Type A/TF 2/3 thread screws (11881120)

PN
02102124



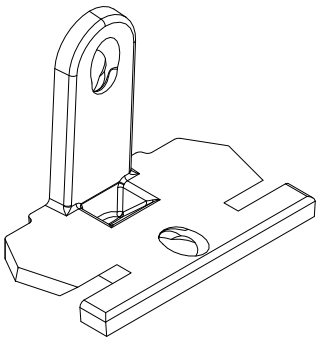
# XX Panel Placement Guide

Panel

**Includes:**

2 - #8-18 x 1" Type AB full thread screws (11800652)

PN
02102278



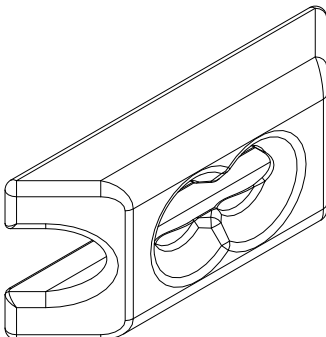
# XX Panel Placement Bracket

Sill

**Includes:**

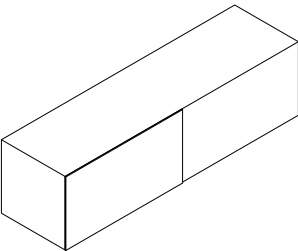
2 - #8-32 x 1/2" flat head self tapping screws (02100325)

PN
02102279



# XX Meeting Stile Foam

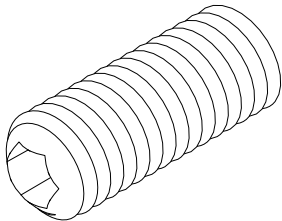
PN
10500057



### Jamb Shim Screw

5/16" x 1.25

PN
02102120

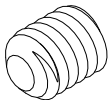


### UNC Set Screw

5/16' x 18 x .375

Used to install Pocket Interlock

PN
02100329

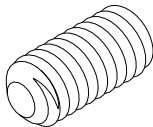


### UNC Set Screw

5/16' x 18 x .625

Used to install Pocket Interlock

PN
02100330

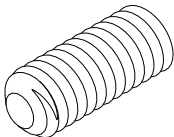


### UNC Set Screw

5/16' x 18 x .75

Leveling screw for recessed sills

PN
02100326

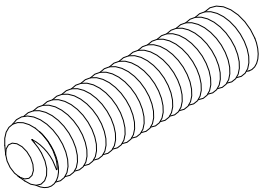


### UNC Set Screw

5/16' x 18 x 1.25

Leveling screw for recessed sills

PN
02100327

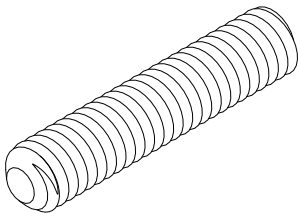


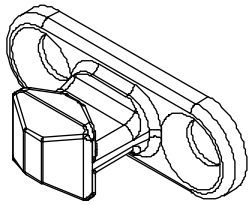
### UNC Set Screw

5/16' x 18 x 1.5

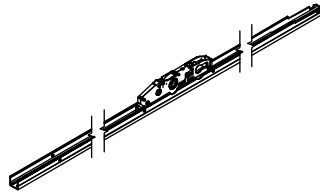
Leveling screw for recessed sills

PN
02100328

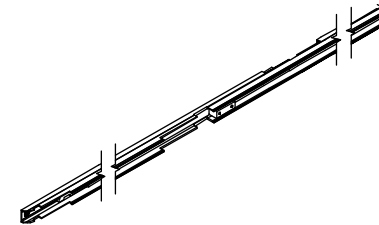




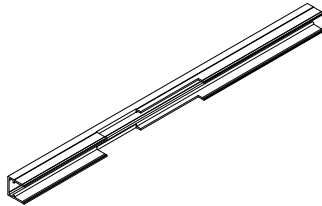
**Locking Bolt**  
Pre 4/3/2012  
No longer available



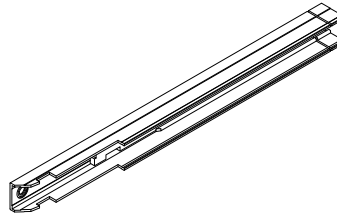
**Standard Gear**  
Pre 4/3/2012  
No longer available



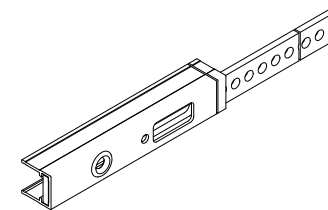
**Lever Side Cover Rail/Drive Rail**  
Pre 4/3/2012  
No longer available



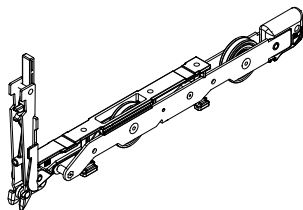
**Cover Rail Extension**  
Pre 4/3/2012  
No longer available



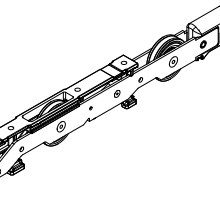
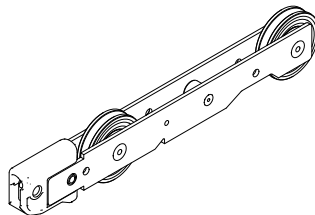
**Locking Side Cover Rail/Drive Rail**  
Pre 4/3/2012  
No longer available



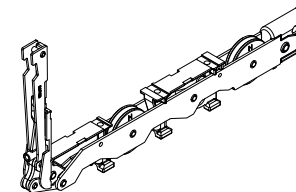
**Locking Side Cover Rail/  
Drive Rail Extension**  
Pre 4/3/2012  
No longer available



**Standard Corner/Straight Bogie**  
Pre 10/22/2018 - No longer available

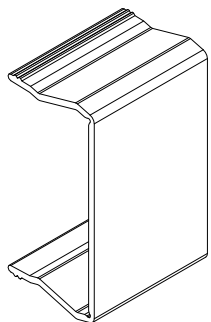


**Standard Corner/Reverse Bogie**  
Pre 10/22/2018 - No longer available

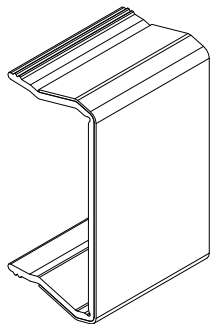


## Ordering specifications (use all that apply):

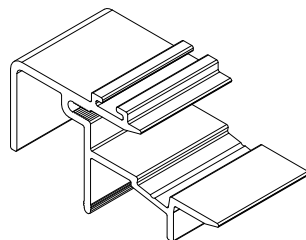
1. Original order number/line number (if available)
2. Profile
3. Total rough opening
4. Handing
5. Color/Finish (where applicable)
6. Species (where applicable)
7. \* Specify Interior or Exterior
8. \*\* Specify Keyed Fixed Handle or Flush Handle



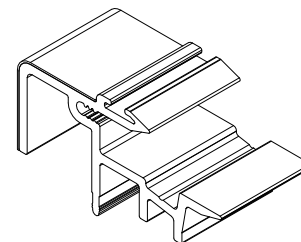
**A1641, Stile Edge Cover**



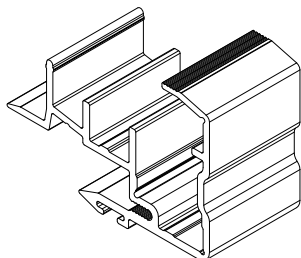
**\*C0026, Stile Edge Cover,  
Wood Wrap**



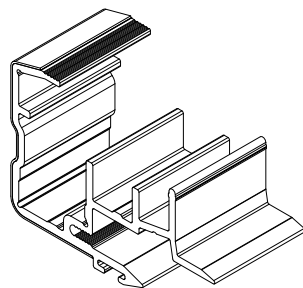
**A1658, Interior Interlock**  
For all Pocket Panels



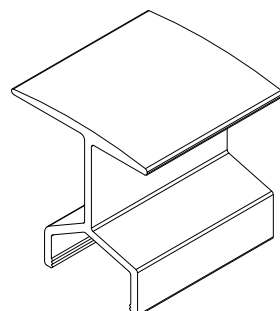
**C0111, Interior Interlock**  
Vinyl, Wood Wrap



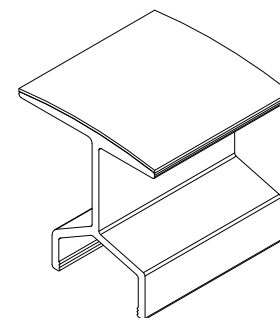
**A2602, Exterior Interlock**



**C0106, Exterior Interlock,  
Wood Wrap**  
(Ultimate Wood)



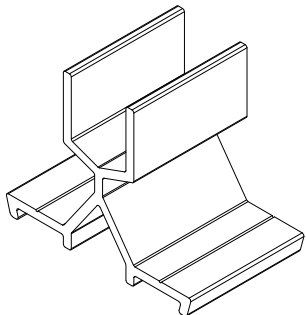
**\*\*A1811, Astragal**



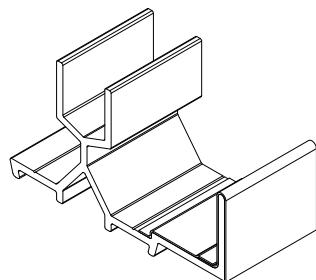
**\*\*C0060, Astragal,  
Wood Wrap**  
(Ultimate Wood)

## Ordering specifications (use all that apply):

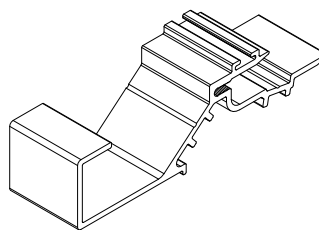
1. Original order number/line number (if available)
2. Profile
3. Total rough opening
4. Handing
5. Color/Finish (where applicable)
6. Species (where applicable)
7. \* Specify Interior or Exterior
8. \*\* Specify Keyed Fixed Handle or Flush Handle



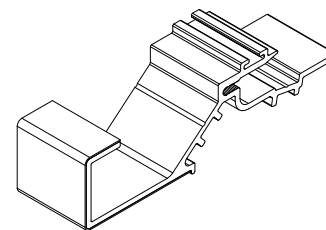
**A1654, Header Guide**



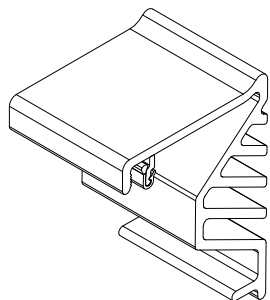
**C0050, Header Guide,  
Interior, Wood Wrap**



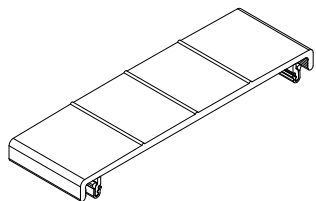
**A1793, Pocket Interlock**



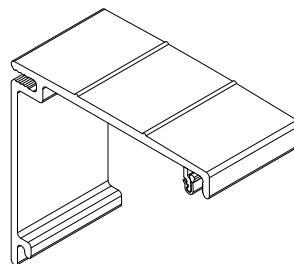
**C0056, Pocket Interlock  
Wood Wrap  
(Ultimate Wood)**



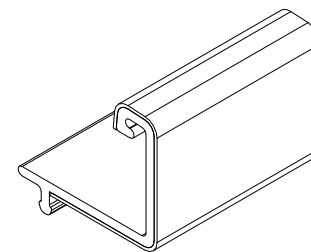
**A2169, Sill Cover, Interior,  
with Fins and Gasket**



**A1937, Sill Cover, Middle,  
with Gasket**



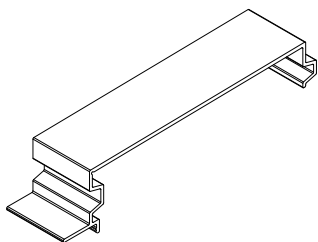
**A1938, Sill Cover, Pocket,  
with Gasket**



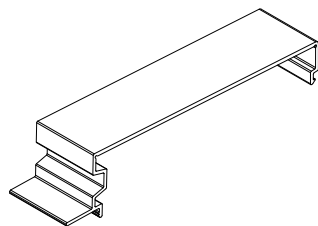
**C0057, Pocket Panel Part  
Stop, Wood Wrap  
(Ultimate Wood)**

## Ordering specifications (use all that apply):

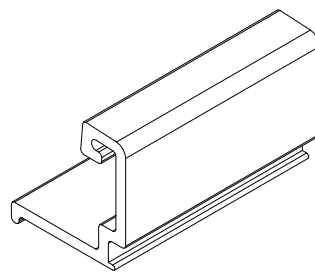
1. Original order number/line number (if available)
2. Profile
3. Total rough opening
4. Handing
5. Color/Finish (where applicable)
6. Species (where applicable)
7. \* Specify Interior or Exterior
8. \*\* Specify Keyed Fixed Handle or Flush Handle



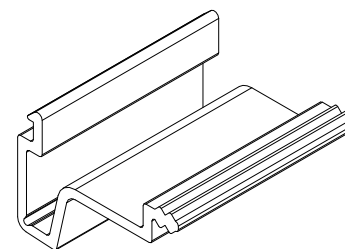
**A1656, Part Stop Flat**  
(Ultimate)



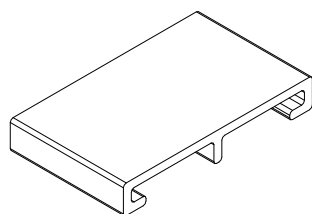
**A1724, Part Stop, Exterior**  
(Ultimate)



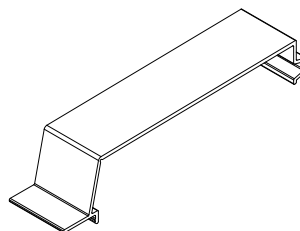
**A1722, Stationary Jamb  
Part Stop**  
(Ultimate)



**A1723, Stationary Head  
Jamb Filler**  
(Ultimate)



**A1792, Pocket  
Interlock Base**  
(Bronze only)



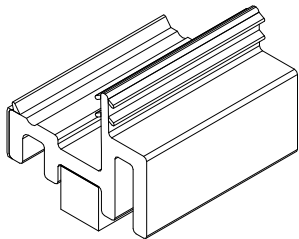
**A3019, Part Stop with  
Lead In**  
(Ultimate)

# Panel Sweep

C0059

NOTE: Need original order number or field calcs information.

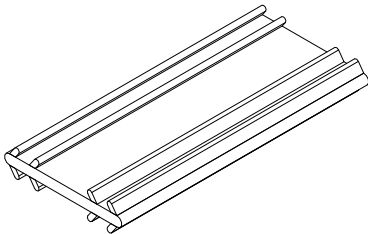
Color	Length	PN
Black	150"	11188699
Gray	(3810)	11188599



# Connecting Barb

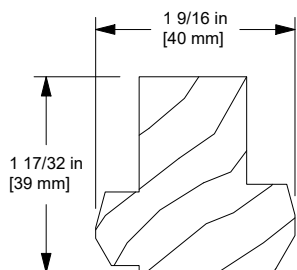
V803

Length	PN
Specify length	15812999

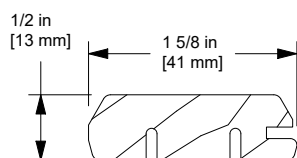


## Ordering specifications (use all that apply):

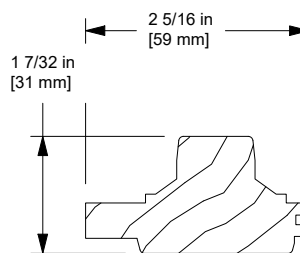
1. Original order number/line number (if available)
2. Profile
3. Total rough opening
4. Handing
5. Color/Finish (where applicable)
6. Species (where applicable)



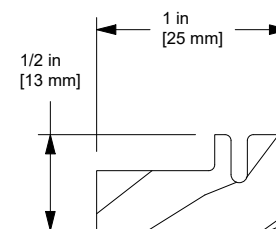
**W10444**  
**Inactive Locking Base**



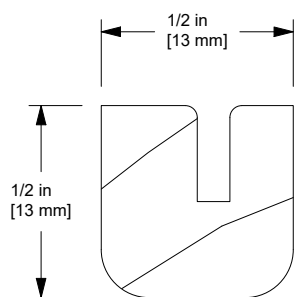
**W10089**  
**Jamb Keeper Guide**



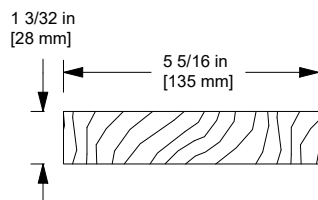
**W10113, Stationary Head**  
**Jamb Panel Retainer**  
(Stacked)



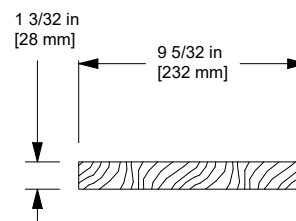
**W10088**  
**Stationary Jamb Cover**  
(Stacked)



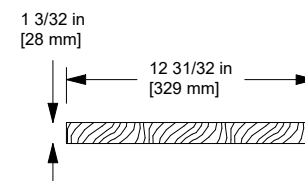
**W10112, Stationary Jamb**  
**Blank Cover**  
(Stacked)



**W10264, Pocket Cover**  
**2 Deep**



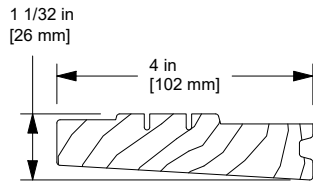
**W10406, Pocket Cover**  
**3 Deep**



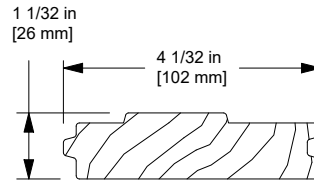
**W10407, Pocket Cover**  
**4 Deep**

## Ordering specifications (use all that apply):

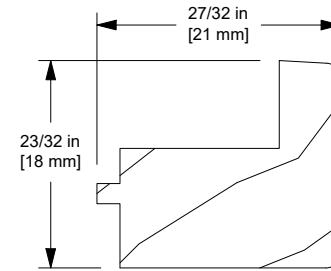
1. Original order number/line number (if available)
2. Profile
3. Total rough opening
4. Handing
5. Color/Finish (where applicable)
6. Species (where applicable)



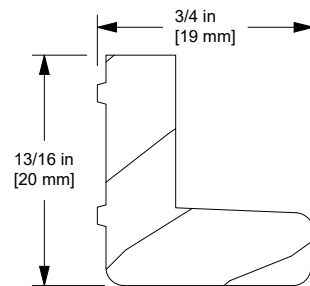
**W10090, Part Stop Exterior**  
(Ultimate Wood)



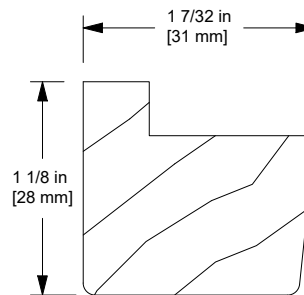
**W10111, Part Stop Flat**  
(Ultimate Wood)



**W10110, Stationary Head Jamb Filler**  
(Stacked - Ultimate Wood)



**W10114, Stationary Jamb Cover, Exterior**  
(Stacked - Ultimate Wood)

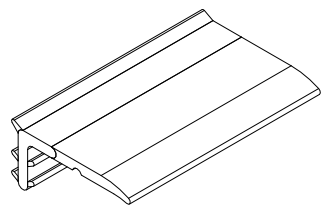


**W10399, Head Jamb Extension**  
(Stacked - Ultimate Wood)

## Guide Rail Weather Strip

V1785

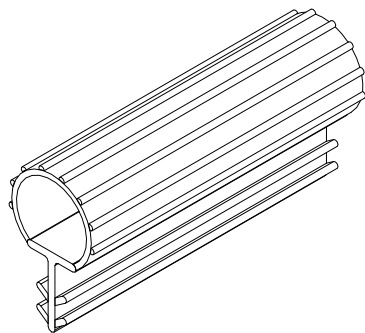
Color	Length	PN
Black	150" (3810)	02102237



## Weather Strip

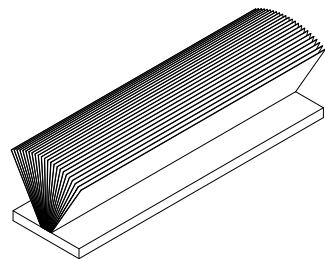
V147

Color	Length	PN
Beige	150" (3810)	15351699
Black		17002299



## Pile Weather Strip

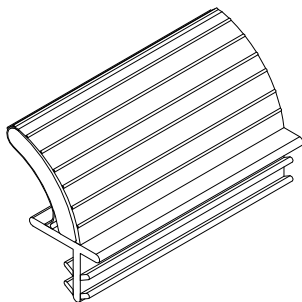
Length	PN
Specify LF	11107533

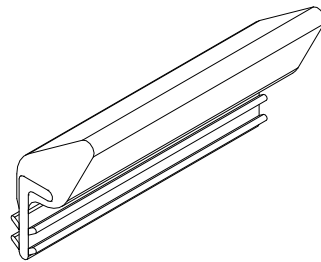


## Weather Strip, Foam Leaf

V1194

Color	Length	PN
Beige	Specify LF	17003595
Black		17003596



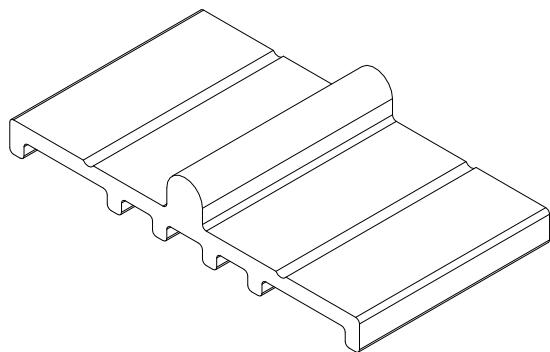


**V1138**

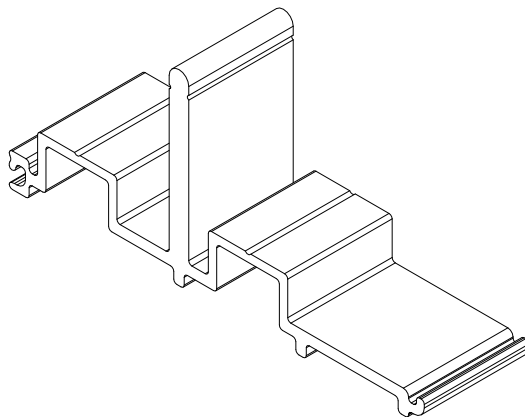
No longer available.  
Replace with V1194

## Ordering specifications (use all that apply):

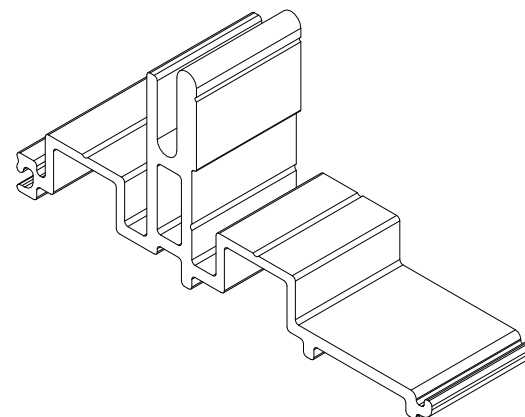
1. Original order number/line number (if available)
2. Profile
3. Total rough opening: width or length of sill
4. Handing
5. Color/Finish
6. Foot Bolt (where applicable)



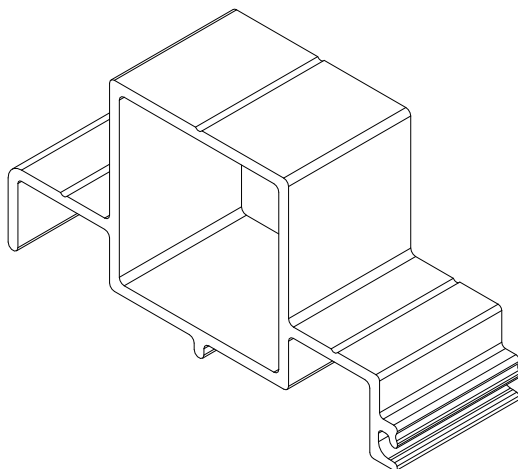
**A1765, Flush Sill**



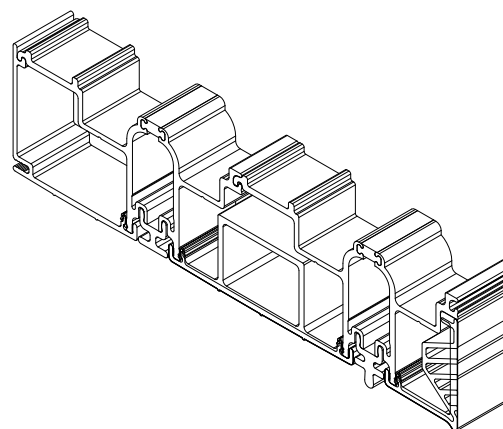
**A1766, Recessed Sill**



**A1767, Recessed Sill with Drainage**



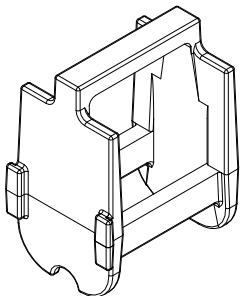
**A1821, Recessed Stationary Block**



**2 Deep Performance Sill - 1 Track**

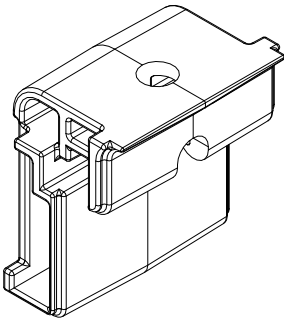
### Stile End Cap, Injectable

Color	PN
Black	11872784



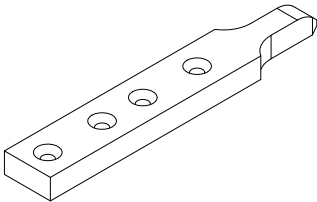
### End Cap, Interior

Color	PN
Black	11872781



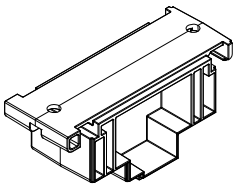
### Milled Stationary Retainer

Color	PN
Stainless Steel	02102190



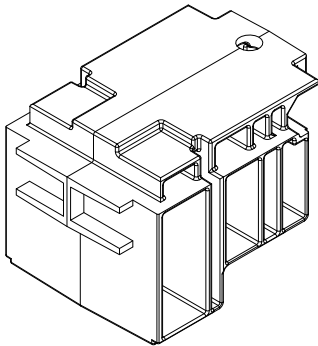
### Sill Corner Key, Middle

Color	PN
Black	10500944



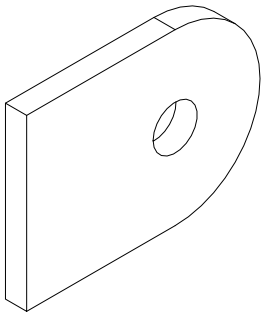
### Sill Corner Key, Exterior

Color	PN
Black	10500941



### Shoot Bolt Retainer Backer

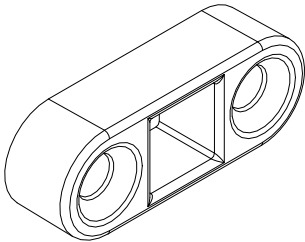
Color	PN
Stainless Steel	02102397



### Shoot Bolt Receiver

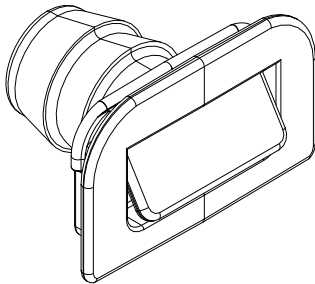
Height 3/8"

Color	PN
Stainless Steel	10501370



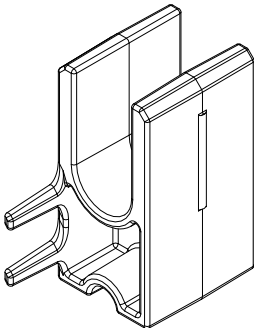
### Drainage Outlet

Color	PN
Dark Brown	10500832
Light Gray	10500833



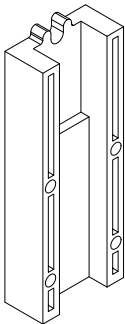
### Middle Panel Sill Retainer

Color	PN
Zinc Plated Black	11860078



### Sill Panel Retainer

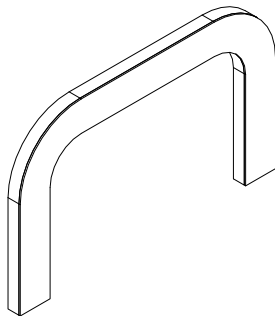
Color	PN
Zinc Plated Black	11860079



### Drainage Outlet Foam Gasket

Adhesive backed

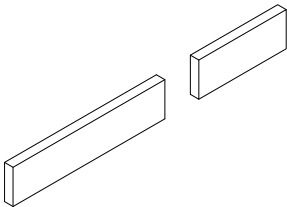
Color	PN
Black	10500475



### Sill Cover Splice Gasket

Adhesive backed

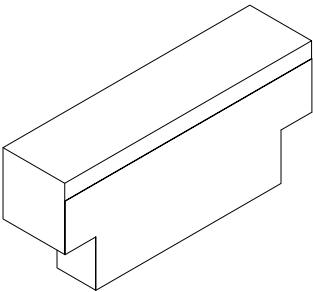
Color	PN
Black	10500473



### Head Jamb Part Stop End Gasket

Adhesive backed

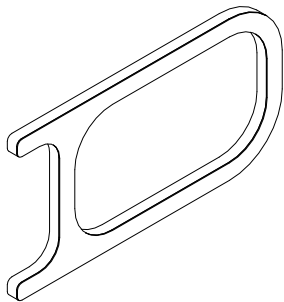
Color	PN
Black	10500472



### Performance Sill Splice Gasket

Adhesive backed

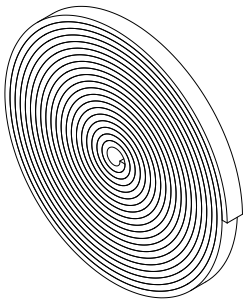
Color	PN
Black	10500470



### Sill Pan Gasket

25' roll - adhesive backed

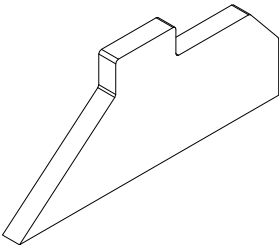
Color	PN
Gray/Black	10501579



### Pocket Interlock Lower Gasket

Adhesive backed

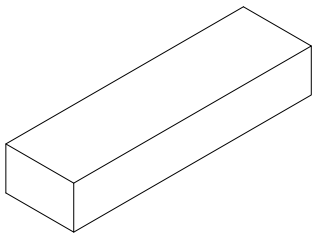
Color	PN
Black	10500476



### Reticulated Foam

5/8" x 3 1/2"

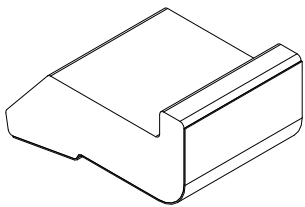
PN
10501578



### Pocket Interlock Bottom Seal

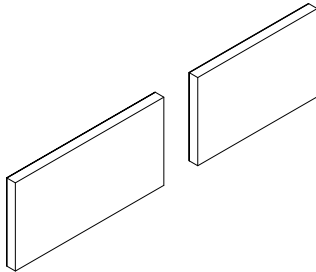
Adhesive backed

Color	PN
Gray	10500477



### Bottom of Jamb Gasket

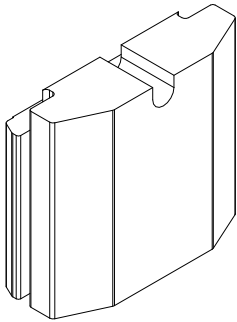
Color	PN
Black	10500059



### Foam Seal, Performance Sill

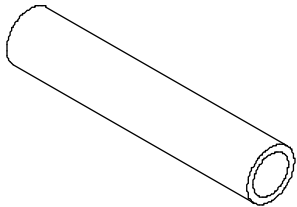
Adhesive backed

Color	PN
Black	10500078



### 3/8" ID Flexible Tubing

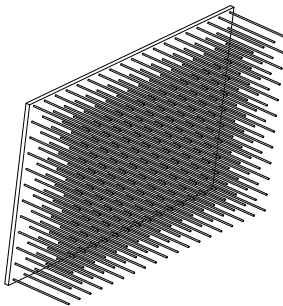
Length	PN
Specify LF	10501101



### Pocket Interlock Dust Block

Adhesive backed

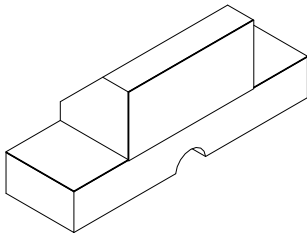
Color	PN
Gray	15600004



### Sill Panel Retainer Foam Seal

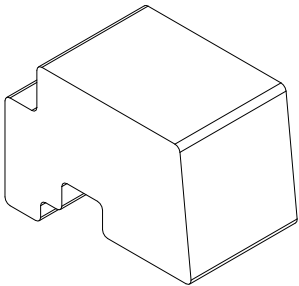
Adhesive backed

Color	PN
Black	10500474



# Frame Cladding Foam Backer

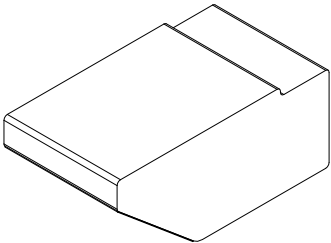
Color	PN
Gray	10500077



# Pocket Interlock Top Seal

Adhesive backed

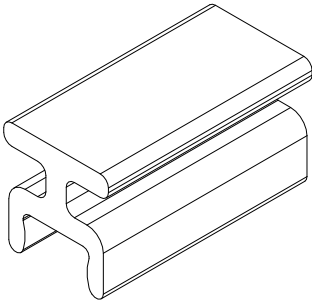
Color	PN
Gray	10500479



# Thermal Break Filler

V2084

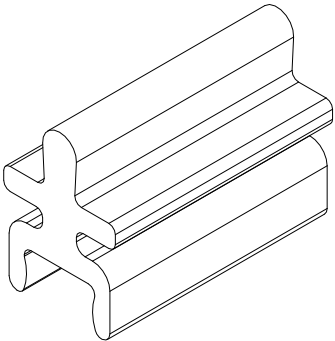
Color	Length	PN
Black	150" (3810)	15901499
Gray		15901399



# Thermal Break Filler

V2083

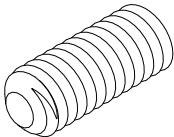
Color	Length	PN
Black	150" (3810)	15901299



# UNC Set Screw

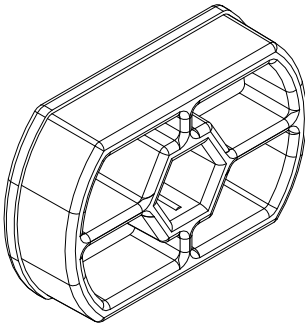
5/16" x 18 x .75

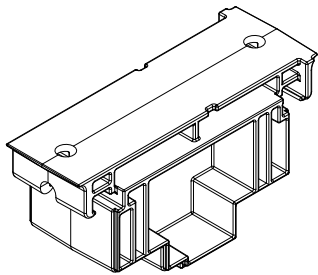
Color	PN
Stainless Steel	02100331



# Performance Sill Spacer

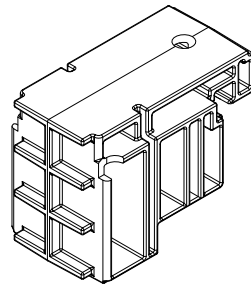
PN
11255021





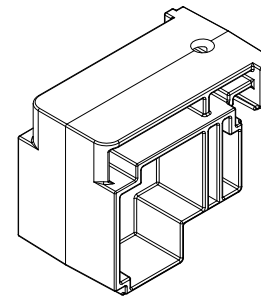
**End Cap, Middle Fabrication**

No longer available, replace  
with Sill Corner Key, Middle



**End Cap, Stacked**

No longer available, replace  
with Sill Corner Key, Exterior



**End Cap, Pocket**

No longer available, replace  
with Sill Corner Key, Exterior

## Items included with Stacked Panels

Primary*	Secondary**
Panel Sweep Interlock Weather Strip Rout for exterior finger pull – (only if original had flush handle) Stile edge cover Handle rout prep (flush or keyed)	Panel Sweep 2 Interlocks Weather Strip Rout for panel bumpers 2 Stile edge covers Interior flush handle rout
Stationary	Bi-Parting
Panel Sweep Interlock Weather Strip Stile edge cover Shoot bolts with stationary brackets	Panel Sweep Interlock Weather Strip Stile edge cover Interior flush handle rout Exterior finger pull rout

\* If an operating panel is interlocking to a stationary panel, the panel will need to be prepped with bumpers for the stationary jamb.

\*\* If a secondary panel interlocks with the primary panel, specify the type of handle used on the primary panel (flush or keyed exterior). This will determine where the panel bumper prep will be located.

Weather strip is determined by the color of the sill (black weather strip = bronze anodized sill, gray weather strip = mill anodized sill). Panel sweep color is determined by the color of the sill – same as above.

Interlocks and Panel Edge Covers are wood wrapped and will match wood species.

Interior Finger Pulls, Exterior Finger Pulls, Flush Mount Levers and Keyed Handle Sets available in Bronze

PVD, Satin Nickel PVD, and Brass PVD.

Operating hardware is available Bronze or Gray – determined by color of sill.

## Information required to order Replacement Panels

NOTE: Specify sill type, flush/recessed or performance sill on all orders for replacement panels. Specify interior sticking profile (Ogee or Square).

### Primary Panel Options

1. Panel with operating hardware (color) and flush handle installed (color).
2. Panel with operating hardware (color) and keyed fixed handle set (color).
3. Interior finger pull rout.
4. If panel interlocks with stationary panel, prep with bumpers.

### Secondary Panel Options

5. Panel with operating hardware and flush handle installed (color).
6. If panel interlocks with stationary panel, prep with bumpers.

### Bi-Parting Inactive Panel Options

7. Panel with operating hardware (no color needed) and flush handle (color needed).
8. With edge pull installed (only available in Satin Chrome).
9. Interior finger pull rout.
10. Inactive locking base w/astragal. (Will need to order locking bolt jig).
11. Locking bolt jig (keyed fixed handle part #02102388 or flush handle part #02102387).
12. If panel interlocks with stationary panel, prep with bumpers.

## Items included with Stacked Panels

Primary	PX-XP Primary
Panel Sweep Interlock Weather Strip Rout for exterior finger pull (only if original had flush handle) Stile edge cover Handle rout prep (flush or keyed)	Panel Sweep Pocket Panel Interlock Backer Interlock Weather Strip Rout for exterior finger pull (only if original had flush handle) Handle rout prep (flush or keyed)
Secondary**	Pocket**
Panel Sweep 2 Interlocks Weather Strip Rout for panel bumpers 2 Stile edge covers Interior flush handle rout	Panel Sweep Pocket Panel Interlock Backer 2 – Interlocks Weather Strip Rout for panel bumpers Stile edge cover Interior flush handle rout
Bi-Parting	PX-XP Inactive
Panel Sweep Interlock Weather Strip Stile edge cover Interior flush handle rout Exterior finger pull rout	Panel Sweep Pocket Panel Interlock Backer Interlock Weather Strip Exterior finger pull rout Interior flush handle rout

\*\* If a secondary panel interlocks with the primary panel, specify the type of handle used on the primary panel (flush or keyed exterior). This will determine where the panel bumper prep will be located.

Weather strip is determined by the color of the sill (black weather strip = bronze anodized sill, gray weather strip = mill anodized sill).

Panel sweep color is determined by the color of the sill - same as above.

Interlocks and Panel Edge Covers are wood wrapped and will match wood species.

Interior Finger Pulls, Exterior Finger Pulls, Flush Mount Levers and Keyed Handle Sets available in Bronze PVD, Satin Nickel PVD, and Brass PVD.

Operating hardware is available Bronze or Gray - determined by color of sill.

## Information required to order Replacement Panels

NOTE: Specify sill type, flush/recessed or performance sill on all orders for replacement panels. Specify interior sticking profile (Ogee or Square).

### Primary Panel Options

1. Panel with operating hardware (color) and flush handle installed (color).
2. Panel with operating hardware (color) and keyed fixed handle set (color).
3. Interior finger pull rout.

### PX-XP Primary Panel Options

1. Panel with operating hardware (color) and flush handle installed (color).
2. Panel with operating hardware (color) and keyed handle set (color).
3. Interior finger pull rout.

### Secondary Panel Options

1. Panel with operating hardware and flush handle installed (color).

### Pocket Panel Options

1. Panel with operating hardware (color) and flush handle installed (color).

### Bi-Parting Inactive Panel Options

1. Panel with operating hardware (no color needed) and flush handle (color needed).
2. With edge pull installed (only available in Satin Chrome).
3. Interior finger pull rout.
4. Inactive locking base w/astragal. (Will need to order locking bolt jig).
5. Locking bolt jig (keyed fixed handle part #02102388 or flush handle part #02102387).

### PX-XP Inactive Panel Options

1. Panel with operating hardware and flush handle installed (color).
2. With edge pull installed (only available in Satin Chrome).
3. Interior finger pull rout.
4. Inactive locking base w/astragal. (Will need locking bolt jig).
5. Locking bolt jig (keyed fixed handle part #02102388 or flush handle part #02102387).