



Ultimate MultiSlide Door

Replacement Parts

Specifications and technical data are subject to change without notice.

Numbers listed in () parentheses are metric equivalents in millimeters rounded to the nearest whole number.

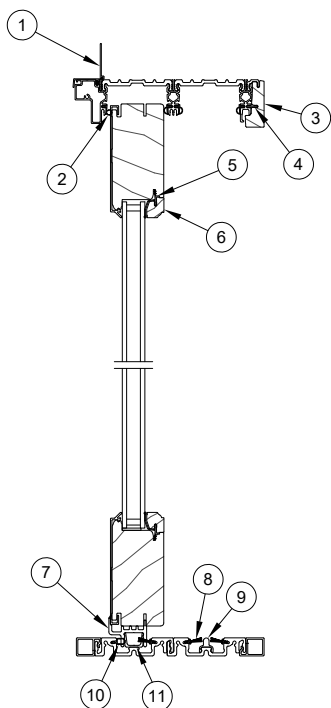
Suggested fasteners are not included and must be ordered separately.

Illustrations are not to scale.

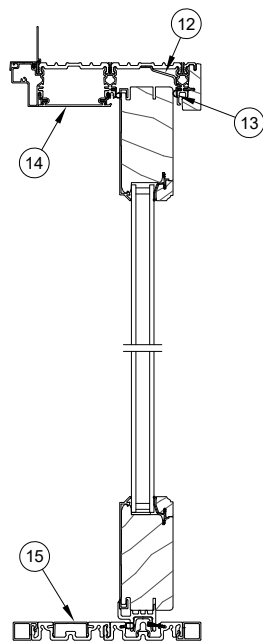
Contents

Product History.....	2
Part Identification - Stacked - OX-XO L or R.....	3
Part Identification - Stacked XXO/OXX.....	4
Part Identification - Stacked XOX.....	5
Part Identification - Pocket PX-XP L or R.....	6
Part Identification - Pocket PXXXX/XXXXP.....	7
Part Identification - Stacked Corner - OXCXO.....	8
Installation Parts.....	9
Installation Parts - Disc-NA - No Longer Available.....	12
Handles.....	13
Operators.....	14
Locking Hardware.....	15
Lock Status Sensor Parts.....	17
Automatic Control Parts.....	18
Automatic Control Parts - Locally Sourced.....	21
Miscellaneous Parts.....	22
Miscellaneous Parts - Disc-NA - No Longer Available.....	27
Aluminum Parts.....	28
Wood Parts - Fabricated.....	29
Vinyl Parts - Fabricated.....	33
Vinyl Parts.....	34
Weather Strip - Fabricated.....	35
Weather Strip.....	36
Weather Strip - Disc-NA - No Longer Available.....	37
Repair Items.....	38
Replacement Sills.....	39
Replacement Panels.....	40
Screen Handing Diagram.....	41
Retractable Screen SE4 Parts - Configured in OMS.....	42
Retractable Screen SE4 Parts.....	43
Scenic Door Sliding Screen SE 2 - Parts Pre 4/27/20 - Disc-NA - No Longer Available.....	46

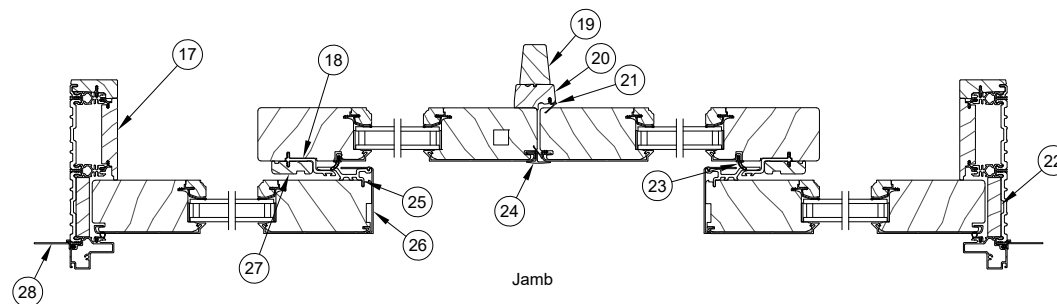
Produced	Unit Type	Features and Changes
2015	Ultimate MultiSlide Door	4/27/2015: Released the Ultimate MultiSlide Door. Available in Stacked or Pocket configurations with 4 3/4" stiles and rails. 8/31/2015: Introduced the Scenic Door Ultimate Sliding Screen. 10/26/2015: Adding IZ3 and High Performance Sill DP50 rated options.
2016	Ultimate MultiSlide Door	2/29/2016: Introduced new XOX configuration. 4/25/2016: Introduced new Sliding Door Automatic Control Device. 8/29/2016: Introduced 9–0 call number heights
2017	Ultimate MultiSlide Door	8/28/2017: Introduced Matte Black Hardware. Added Black as a color option for the Scenic Door Ultimate Sliding Screen. 12/18/2017: Added availability of Lock Status Sensor.
2018	Ultimate MultiSlide Door	10/29/2018: Introduced 90° corner configurations in panel design and options same as the standard MultiSlide.
2019	Ultimate MultiSlide Door	4/29/2019: V1194 replaces V1138 (ECN 23234)
2020	Ultimate MultiSlide Door	4/27/2020: Scenic Door Ultimate Sliding Screen transitions to the SE4 Retractable Screen.
2021	Ultimate MultiSlide Door	12/13/2021: A new Sliding Door Automatic Control (SDAC) system will be available on Ultimate and Modern multi-slide door products with the OMS version 3.12 on December 13, 2021. See Product Bulletin #805 for more information and Product Bulletin #836 for installation requirements.
2023	Ultimate MultiSlide Door	10/30/2023: An ERS coating became available as a standard option for current Triple Pane offerings. See Product Bulletin 904 for more details.
2024	Ultimate MultiSlide Door	8/26/2024: The Scenic Retractable Screen is now available up to Nominal 12 ft height. See Product Bulletin 944 for more information.
2025	Ultimate MultiSlide Door	10/27/2025: Sill color changes from Bronze to Ebony, see Product Bulletin 980 for more information. 10/27/2025: The Stainless Steel Perimeter Bar option in OMS updated the description from "Stainless" to "Silver". See Product Bulletin 990 for more information.



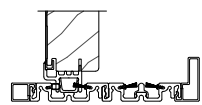
Head Jamb and Sill



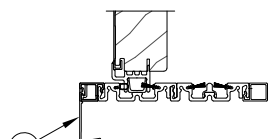
Head Jamb and Sill



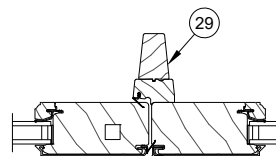
Jamb



Performance Sill Option

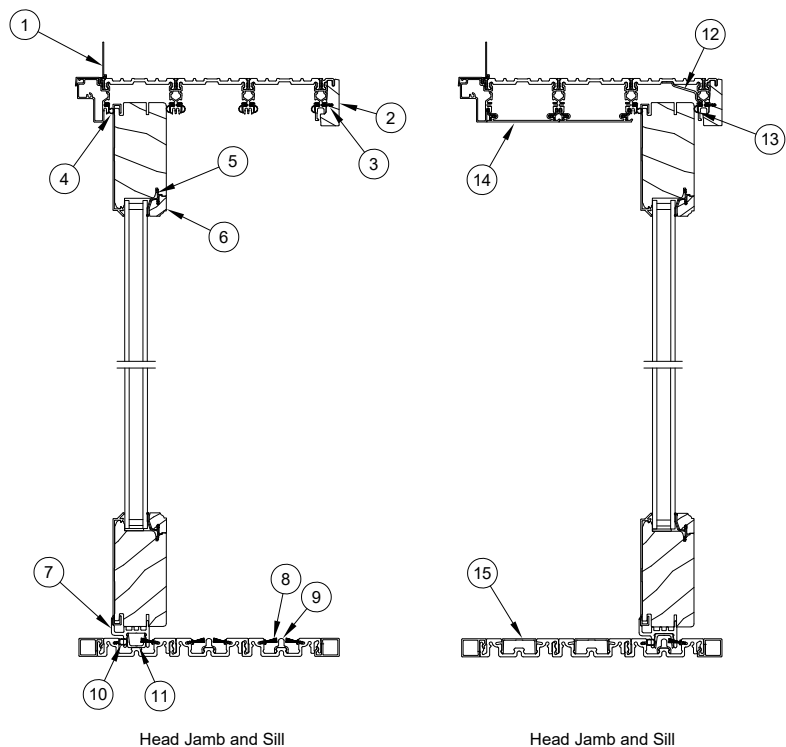


Hi Performance Sill Option



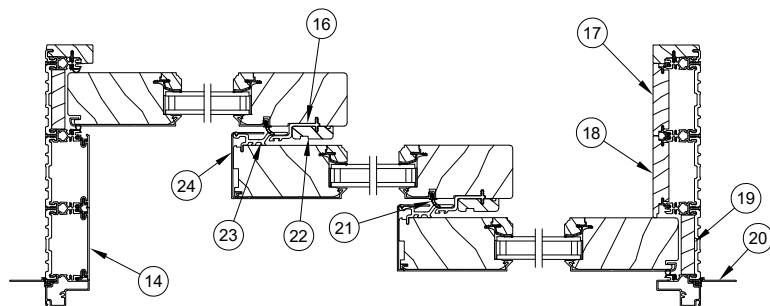
High Performance Jamb

- | | | |
|---|--|---|
| 1. Head Jamb Nailing Fin/Drip Cap, V119 | 11. Panel Leveling Block, A2810 | 21. Mull Casing Base Weather Strip, V2534 |
| 2. Frame Weather Strip, V2475 | 12. Head Jamb Structural Clip, A2875 | 22. Jamb Filler, W12416 |
| 3. Interior Frame Liner, W12330 | 13. Head Jamb Weather Strip, V2977 | 23. Interlocking Stile Weather Strip, V1194 |
| 4. Connecting Barb, V803 | 14. Modular Part Stop, A2730 | 24. Exterior Astragal, A2752 |
| 5. Vinyl Glazing Bead, V2447 | 15. Sill Track Cover, A2736 | 25. Exterior Interlock, V2488 |
| 6. Ogee Glazing Cap, W12367 | 16. Sill Liner Nosing, HP, A2863 | 26. Exterior Interlocking Stile Edge Cover, A2802 |
| 7. Panel Shoe, V2492 | 17. Exterior Stationary Jamb Part Stop, W12359 | 27. Interior Interlock Cover, W12337 |
| 8. Pile Weather Strip, V2493 | 18. Interior Interlock, V2423 | 28. Jamb Nailing Fin, V104 |
| 9. Roller Track, V2426 | 19. Mull Casing, W1450 | 29. Mull Casing, HP, W11040 |
| 10. Sill Bulb Weather Strip, V2564 | 20. Mull Casing Base, W1455 | |



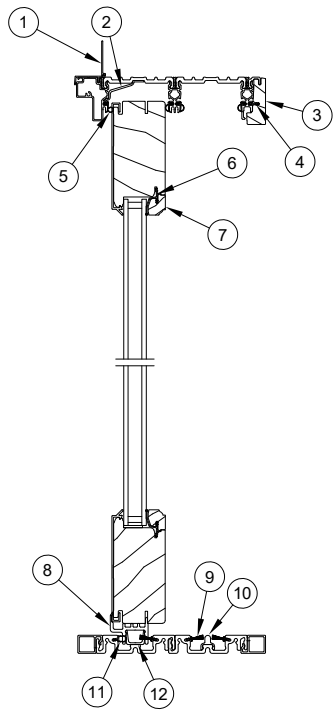
Head Jamb and Sill

Head Jamb and Sill

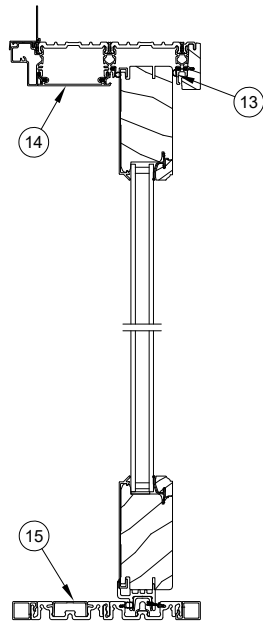


Jamb

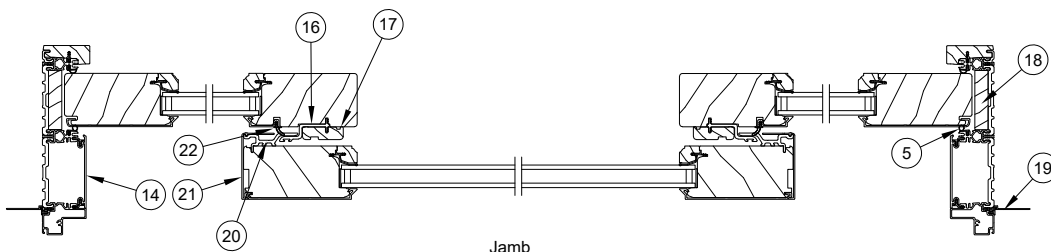
1. Head Jamb Nailing Fin/Drip Cap, V119
2. Interior Frame Liner, W12330
3. Connecting Barb, V803
4. Frame Weather Strip, V2475
5. Vinyl Glazing Bead, V2447
6. Ogee Glazing Cap, W12367
7. Panel Shoe, V2492
8. Pile Weather Strip, V2493
9. Roller Track, V2426
10. Sill Bulb Weather Strip, V2564
11. Panel Leveling Block, A2810
12. Head Jamb Structural Clip, A2875
13. Frame Weather Strip, V2977
14. Modular Part Stop, A2730
15. Sill Track Cover, A2736
16. Interior Interlock, V2423
17. Stationary Jamb Part Stop, W12340
18. Exterior Stationary Jamb Part Stop, W12359
19. Jamb Filler, W12416
20. Jamb Nailing Fin, V104
21. Interlocking Stile Weather Strip, V1194
22. Interior Interlock Cover, W12337
23. Exterior Interlock, V2488
24. Exterior Interlocking Stile Edge Cover, A2802



Head Jamb and Sill

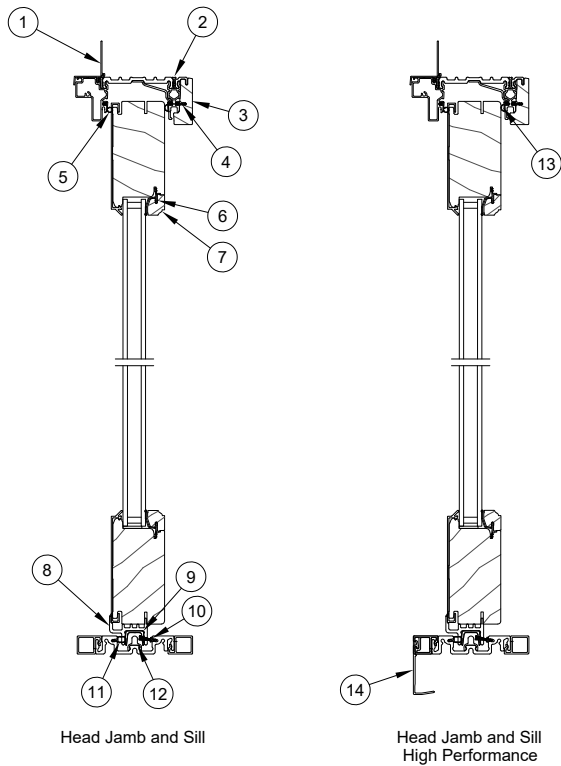


Head Jamb and Sill

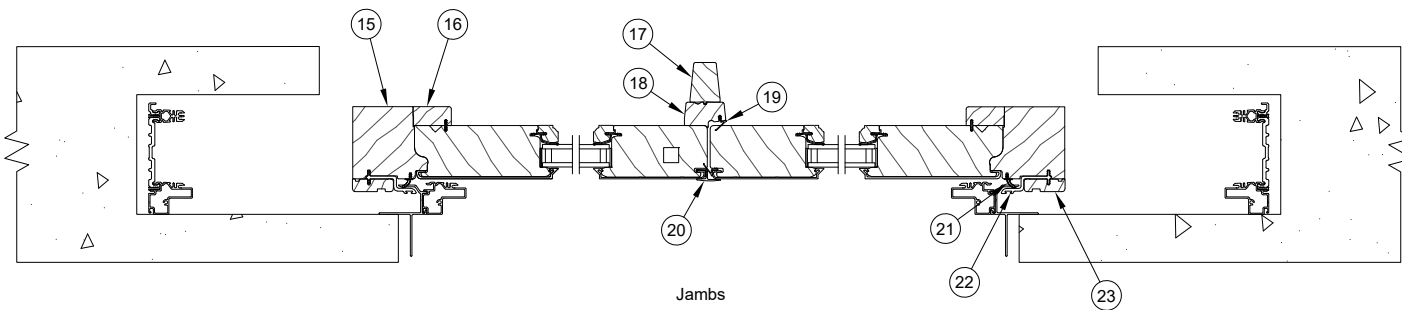


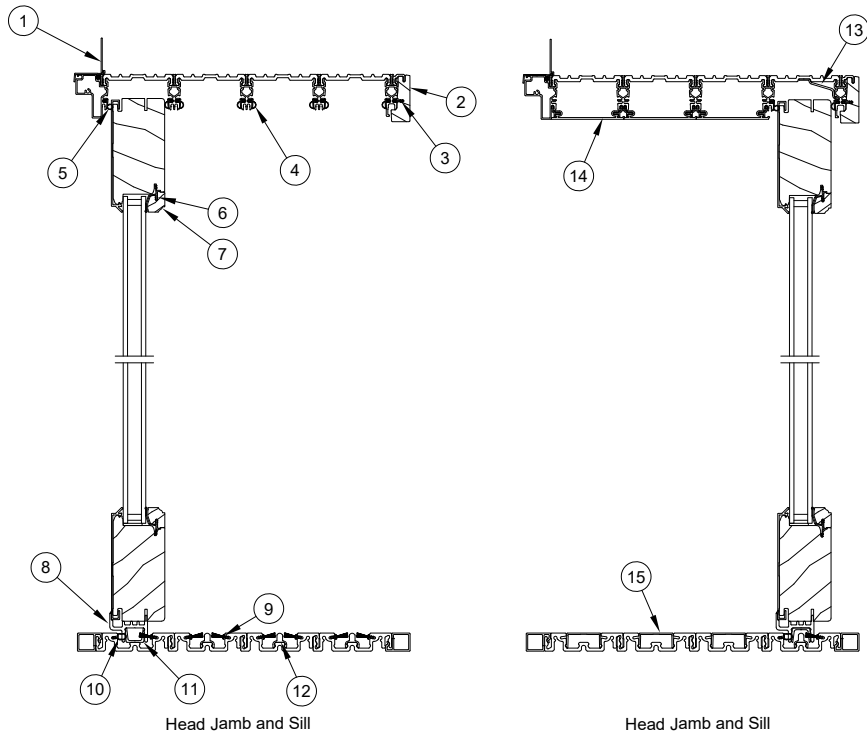
Jamb

1. Head Jamb Nailing Fin/Drip Cap, V119
2. Head Jamb Structural Clip, A2875
3. Interior Frame Liner, W12330
4. Connecting Barb, V803
5. Frame Weather Strip, V2475
6. Vinyl Glazing Bead, V2447
7. Ogee Glazing Cap, W12367
8. Panel Shoe, V2492
9. Pile Weather Strip, V2493
10. Roller Track, V2426
11. Sill Bulb Weather Strip, V2564
12. Panel Leveling Block, A2810
13. Frame Weather Strip, V2977
14. Modular Part Stop, A2730
15. Sill Track Cover, A2736
16. Interior Interlock, V2423
17. Interior Interlock Cover, W12337
18. Jamb Filler, W12416
19. Jamb Nailing Fin, V104
20. Exterior Interlock, V2488
21. Exterior Interlocking Stile Edge Cover, A2802
22. Interlocking Stile Weather Strip, V1194

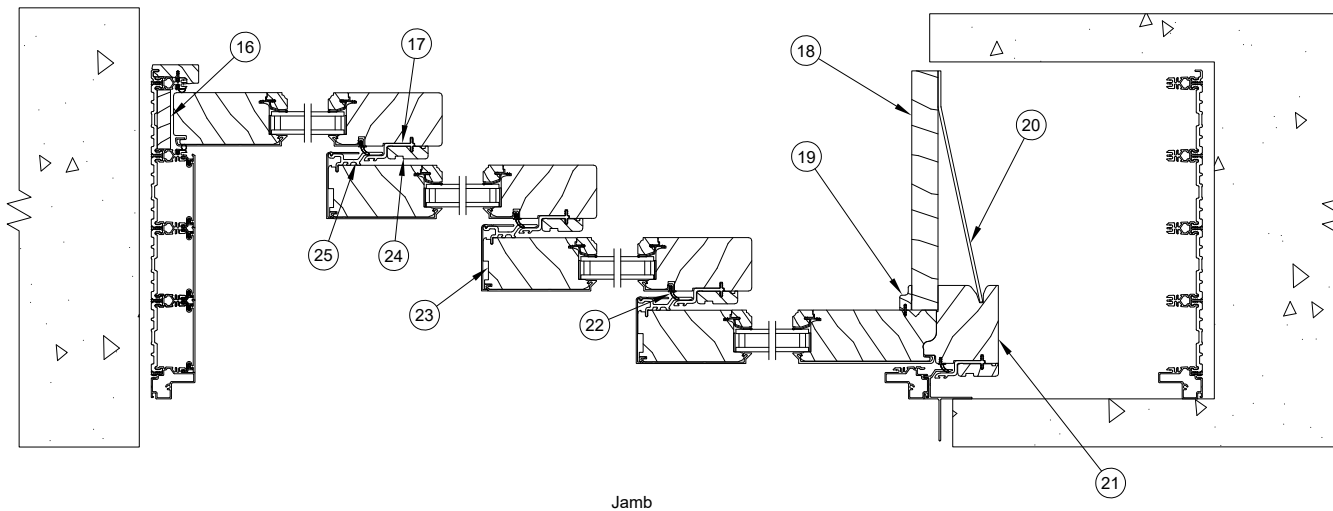


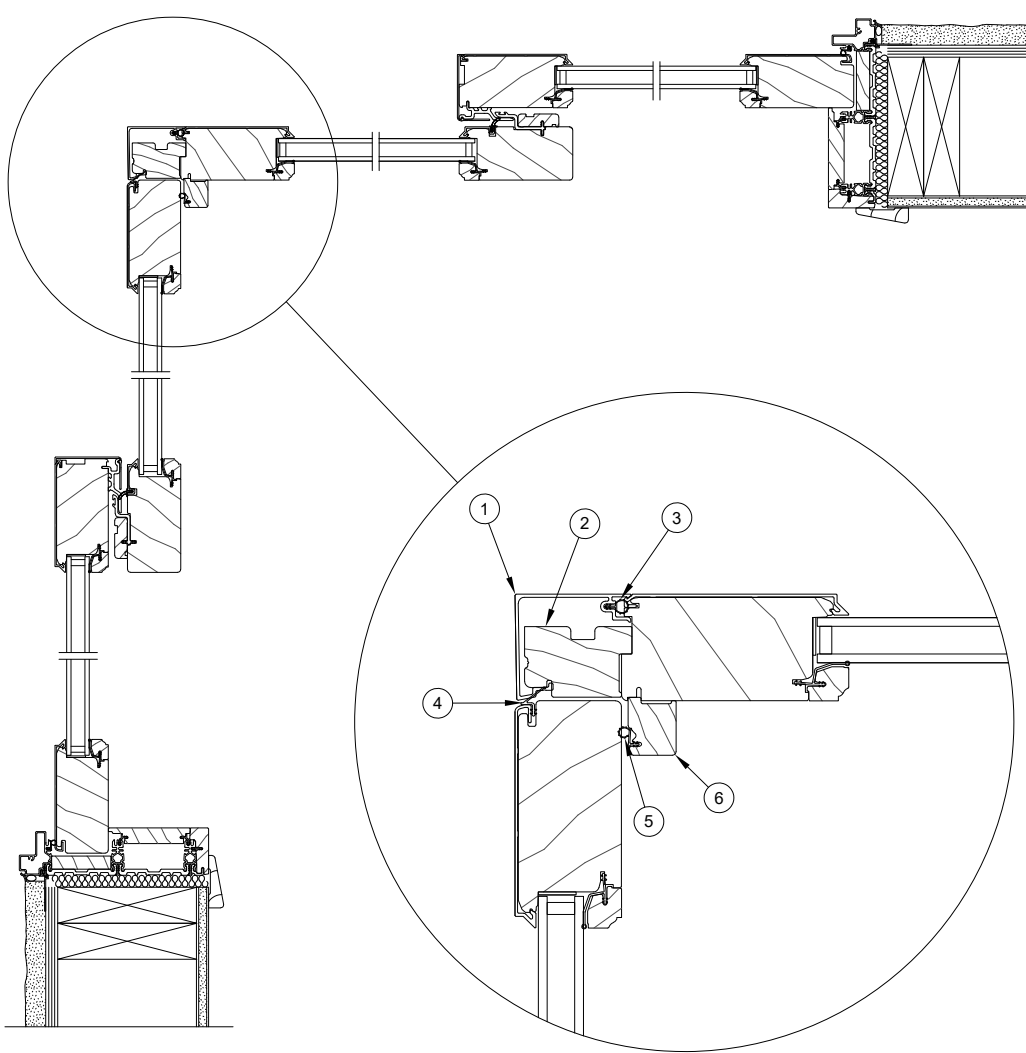
1. Head Jamb Nailing Fin / Drip Cap, V119
2. Head Jamb Structural Clip, A2875
3. Interior Frame Liner, W12330
4. Connecting Barb, V803
5. Frame Weather Strip, V2475
6. Vinyl Glazing Bead, V2447
7. Ogee Glazing Cap, W12367
8. Panel Shoe, V2492
9. Leveling Block, A2810
10. Pile Weather Strip, V2493
11. Sill Bulb Weather Strip, V2564
12. Roller Track, V2426
13. Frame Weather Strip, V2977
14. Sill Liner Nosing, HP
15. Pocket Interlock Support Block, W12387
16. Pocket Stile Cover, W12398
17. Mull Casing, W1450
18. Mull Casing Base, W1455
19. Mull Casing Base Weather Strip, V2534
20. Exterior Astragal, A2752
21. Interlocking Stile Weather Strip, V1194
22. Interior Interlock, V2423
23. Interior Interlock Cover, W12337





1. Head Jamb Nailing Fin / Drip Cap, V119
2. Interior Frame Liner, W12330
3. Connecting Barb, V803
4. Frame Weather Strip, V2977
5. Frame Weather Strip, V2475
6. Vinyl Glazing Bead, V2447
7. Ogee Glazing Cap, W12367
8. Panel Shoe, V2492
9. Pile Weather Strip, V2493
10. Sill Bulb Weather Strip, V2564
11. Leveling Block, A2810
12. Roller Track, V2426
13. Head Jamb Structural Clip, A2875
14. Modular Part Stop, A2730
15. Sill Track Cover, A2736
16. Jamb Filler, W12416
17. Interior Interlock, V2423
18. Pocket Cover, W12401
19. Pocket Stile Trim, W12375
20. Pocket Cover Support Bracket
21. Pocket Panel Support Block, W12387
22. Interlocking Stile Weather Strip, V1194
23. Exterior Interlocking Stile Edge Cover, A2802
24. Interior Interlock Cover, W12337
25. Exterior Interlock, V2488





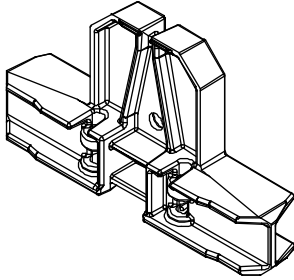
1. Corner Cap, A3268
2. Corner Stile, W13056
3. Jamb Bulb Weather Strip, V2475
4. Mull Weather Strip, V2534
5. Corner Cap Weather Strip, V147
6. Corner Cover, W13059

Performance Sill Liner Splice Key

Includes:

- 1 - Performance sill liner splice key
- 2 - #8 x 5/8" stainless steel screws

Color	PN
Black	11102182

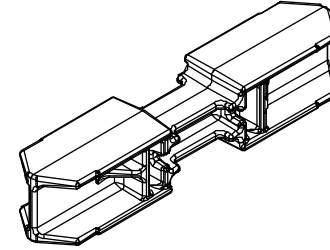


Flush Sill Liner Splice Key

Includes:

- 1 - Flush sill liner splice key
- 2 - #8 x 5/8" stainless steel screws

Color	PN
Black	11102183

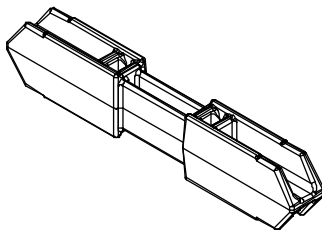


High Performance Sill Liner Splice Key

Includes:

- 1 - HP sill liner splice key
- 2 - #8 x 5/8" stainless steel screws

Color	PN
Black	11102184

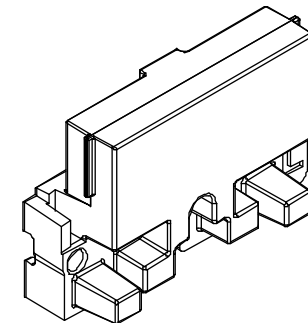


Sill Corner Key

Includes:

- 1 - Sill corner key
- 2 - #8 x 5/8" stainless steel screws
- 2 - #8 x 1 3/4" stainless steel screws

Color	Handing	PN
Black	LH	11102185
	RH	11102186

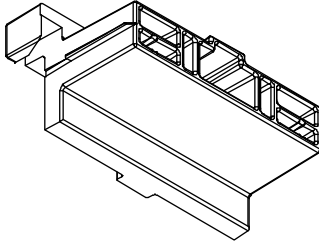


Head Jamb Corner Key

Includes:

- 1 - Head jamb corner key
- 2 - #8 x 5/8" stainless steel screws
- 2 - #8 x 1 1/4" stainless steel screw

Color	PN
Black	11869872

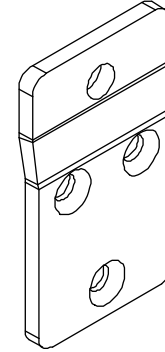


Panel Bumper Retainer

Includes:

- 1 - Panel bumper retainer
- 1 - .625 Rubber bumper
- 3 - #8-15 x 2 1/2", A/TF, 2/3 thread screws

Color	PN
Bronze	11100320

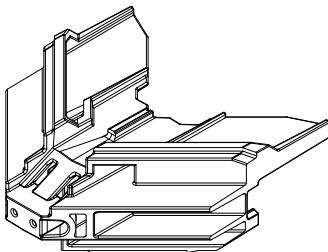


Frame Cladding Corner Key

Includes:

- 1 - Frame cladding corner key
- 1 - #8 x 1 1/2" Type-A, TF 2/3 thread screw

Color	PN
Black	11869881

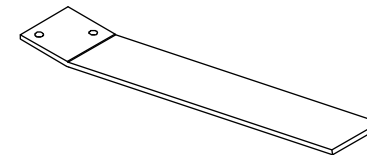


Pocket Cover Support Bracket

Includes:

- 1 - Pocket cover support bracket
- 2 - #8-18 x 1" Truss head screws

Color	PN
Aluminum	11100322



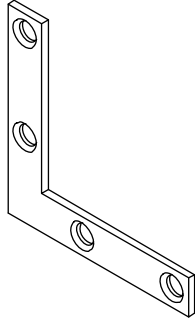
Sill Corner Key - 90° Corner

Includes:

1 - L-bracket, flat 2"

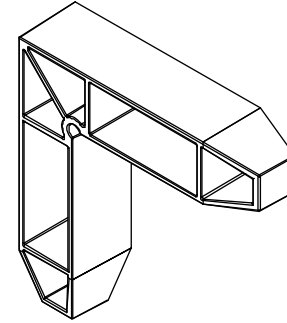
4 - #8 x 3/8" Phillips head Plastite thread forming screws

Color	PN
Stainless Steel	11800262



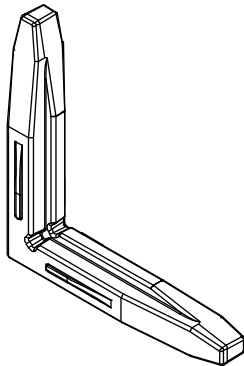
Sill Liner Corner Key - 90° Corner

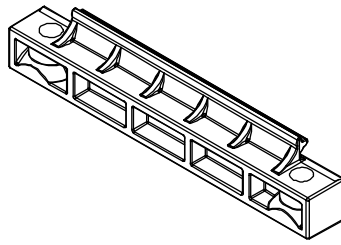
Color	PN
Black	11869906



Frame Connector Key - 90° Corner

Color	PN
Black	11869905





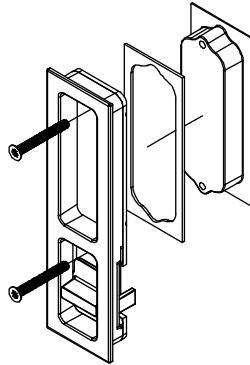
Sill Splice Key
No longer available

Handle Set, Active

Includes:

- 1 - Active interior pull
- 1 - Exterior pull
- 1 - Exterior handle gasket
- 2 - M5 x .8 x 40MM, Pozidriv flat head screws

Color	PN
Bronze PVD	11102161
Satin Nickel PVD	11102162
Matte Black	11102215

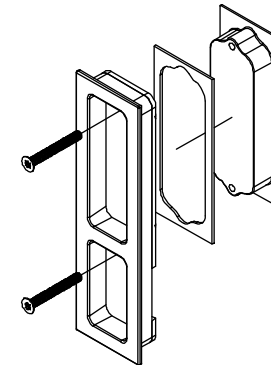


Handle Set, Inactive

Includes:

- 1 - Inactive interior pull
- 1 - Exterior pull
- 1 - Exterior handle gasket
- 2 - M5 x .8 x 40MM, Pozidriv flat head screws

Color	PN
Bronze PVD	11102158
Satin Nickel PVD	11102159
Matte Black	11102216

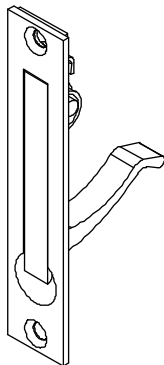


Edge Pull Kit - Pocketing Units

Includes:

- 1 - Edge pull
- 2 - #8-18 x 3" Type AB full thread screws

Color	PN
Satin Chrome	11100314

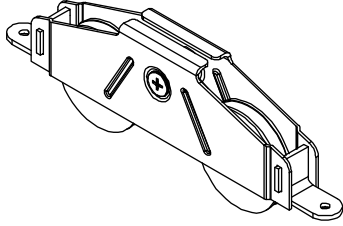


Adjustable Roller Kit

Includes:

- 1 - Roller
- 2 - #8 -15 x 1 1/2" A/TF 2/3 thread screws

Color	PN
Stainless Steel	11100319

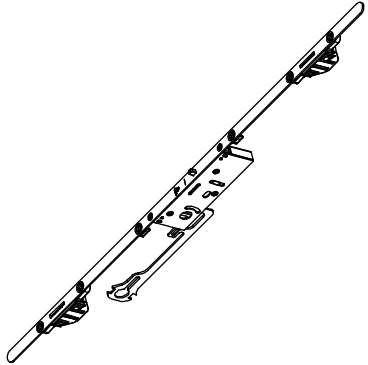


Multi-Point Lock Kit

Includes:

- 1 - Multi-point lock
- 6 - #7-19 x 1 1/2" AB full thread screws

Color	PN
Stainless Steel	11100325

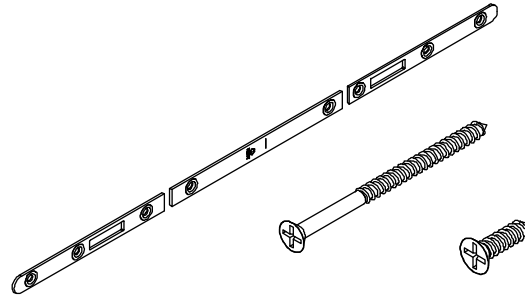


Jamb Strike Package

Includes:

- 1 - Strike
- 4 - #8-15 x 2 1/2" A/TF 2/3 thread screws
- 4 - #8-18 x 5/8" AB-17 full thread screws

Color	PN
Stainless Steel	11100316

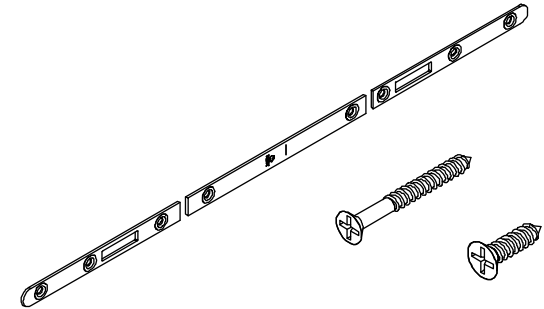


Panel Strike Kit Package

Includes:

- 1 - Strike
- 4 - #8-15 x 1 1/2" A/TF 2/3 thread screws
- 4 - #8-18 x 5/8" AB-17 full thread screws

Color	PN
Stainless Steel	11100317

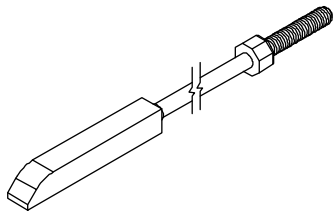


Locking Rod/Shoot Bolt Assembly

Includes:

- 1 - Locking rod with end bolt

Height	Top Locking Rod Length	Color	PN
CN 7-0	11"	Stainless Steel	05700180
CN 8-0	20 1/2"		11102167
*All other lengths must be specified			



Shoot Bolt Guide

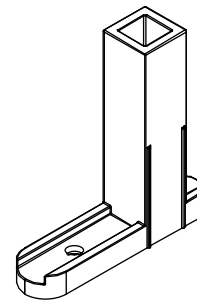
Includes:

- 1 - Flush bolt guide
- 1 - #8 x 1 1/2" Phillips, pan head, stainless steel screw

Usage dates:

Active panels-with Multi-Point, Inactive panels - all

PN
10815199

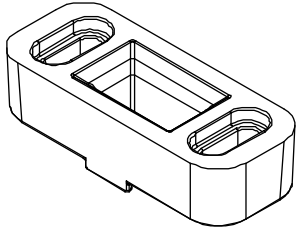


Flush Bolt Strike Kit

Includes:

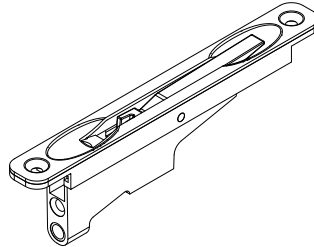
- 1 - Flush bolt strike block
- 2 - #8-18 x 3" Type AB full thread screws

Color	PN
Black	11100323



Head Flush Bolt, Inactive Panel

Color	PN
Black	11101780

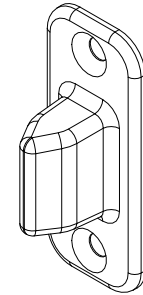


Panel Alignment Bolt

Includes:

- 1 - Panel alignment bolt
- 2 - #8-15 x 1 1/2" Type A, TF, 2/3 thread, flat head, stainless steel screw

Color	PN
Black	11102222
Beige	11102223

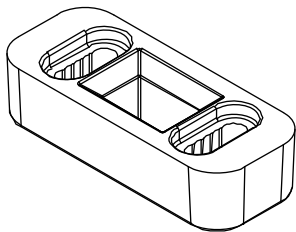


Shoot Bolt Strike Kit, 90° Corner

Includes:

- 1 - Shoot bolt strike block
- 2 - #8-18 x 3" Type AB full thread screws

Color	PN
Black	11800264

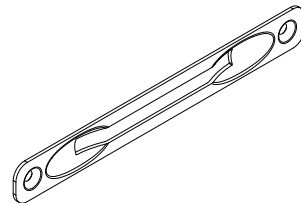


Cover Plate for Flush Bolt

Includes:

- 1 - Cover plate
- 2 - #8 x 1" stainless steel screw

Color	PN
Brushed Chrome	11101786

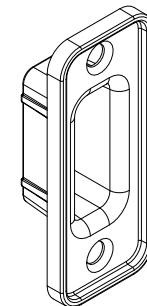


Panel Alignment Receiver

Includes:

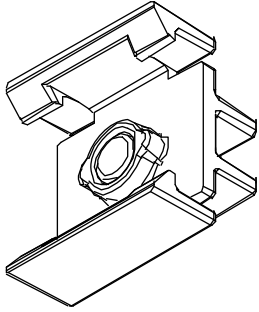
- 1 - Panel alignment receiver
- 2 - #8-18x 1" Type AB, flat head screws

Color	PN
Black	11102224
Beige	11102225



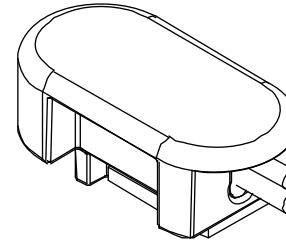
Housing Assembly, Magnet, MPS

Color	PN
Black	10501848



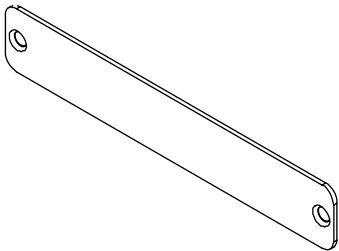
Reed Capsule

Color	PN
Black	10501846



Transmitter Cover

Color	PN
Brushed Stainless Steel	10501822

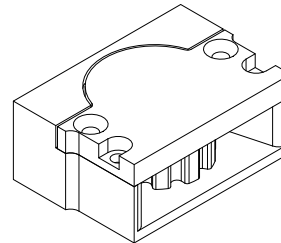


Pulley Corner Key

Includes:

- 1 - Bracket
- 4 - #8-15 x 3" type A/TF, 2/3 thread screw

PN
10502028

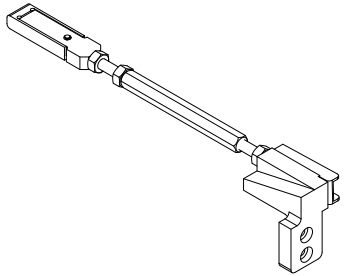


Turnbuckle Assembly

Includes:

- 1 - Turnbuckle
- 2 - #8x18 x 1 3/4" full thread pan head screw

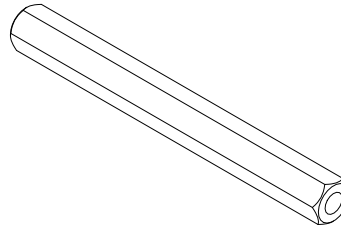
Handing	PN
LH	10502022
RH	10502023



LH shown

Turnbuckle Barrel

Length	PN
4"	10507628
10"	10507629

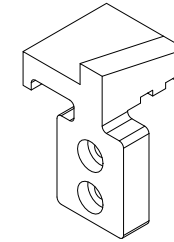


Bi-Parting Belt Clamp

Includes:

- 1 - Bracket
- 2 - #8x18 x 1 3/4" full thread pan head screw

Handing	PN
LH	10502026
RH	10502027



RH shown

Motor

Model	PN
Everest	10501232
Peak	10501233



Control Box

(Configurable to Motor)

PN
10501234



C13 18" Power Cord

PN
10501261

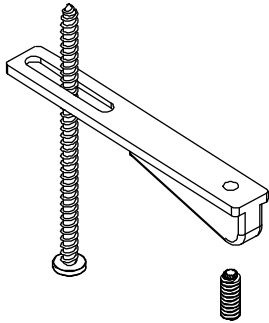
No illustration available

Closing Ramp Assembly

Includes:

- 1 - Bracket
- 2 - #8-18 x 3" type AB, Phillips head, full thread screw

PN
10501304



Exterior Wall Switch

Color	PN
Black	10501257
White	10501256



Interior Wall Switch, 12-in-1

PN
10502003



T1 Sensor

PN
10501249



H1 Sensor

PN
10501311

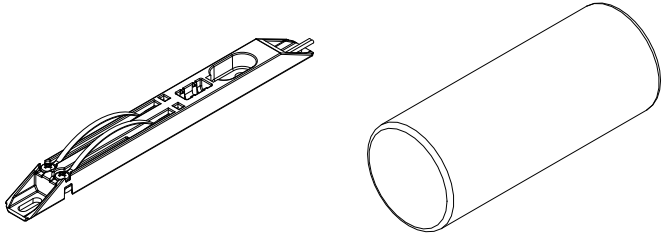


Power Transfer Device Kit, Panel

Includes:

- 1 - Power Transfer Device
- 1 - Magnet
- 2 - #8 x 1" TEK-3, Phillips pan head stainless steel screws

PN
11862384

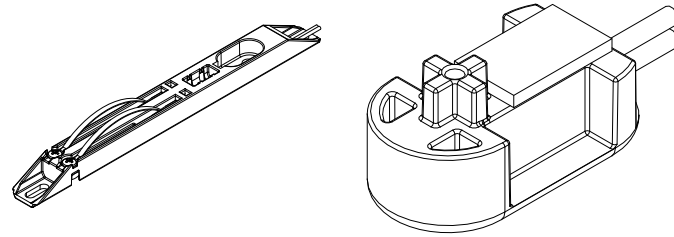


Power Transfer Device Kit, Frame

Includes:

- 1 - Power Transfer Device
- 1 - Reed Capsule
- 2 - #10-12 x 3" Torx, T20, pan head, 2/3 thread screws

PN
11862383

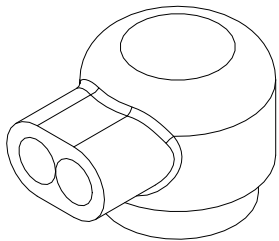


Power Transfer Device Wire Kit, Bi-Parting

Includes:

- 4 - Wire Connector
- 2 - Wire Lock/Close, 25'

PN
11862385

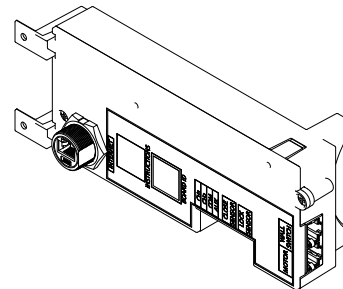


SDAC Control Module With Ethernet Kit

Includes:

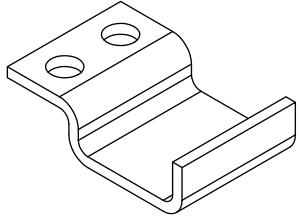
- 1 - Control Module with ethernet
- 1 - 18" Wire, aux to brake
- 1 - 2' CAT5E wire
- 2 - #8-32 x 5/16" Phillips, pan head stainless steel screws

PN
11862389



Belt Clip

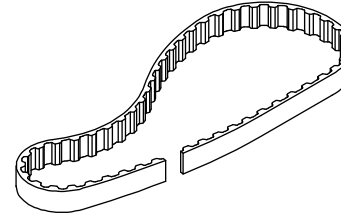
Color	PN
Black	10501208



Belt

NOTE: Order by foot - belt calculation is frame width x 2 + 4'

Color	PN
Black	10501271



NOTE: The following cables are required, and should be locally sourced for purchase.

Communication Cables

Shielded Cat5e cable with shielded RJ45 connections

Motor Power Cable

Shielded Stranded 14-2 Cable

Stationary Panel Bracket Package

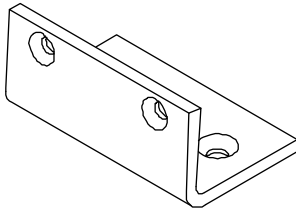
Includes:

- 1 - Stationary bracket
- 2 - #8-15 x 2 1/2" A/TF 2/3 thread screws
- 1 - #8 x 7/8" screw
- 2 - #6 x 1 1/2" screws

Usage dates:

Uni-Directional and Bi-Parting

Color	PN
Aluminum	11102190

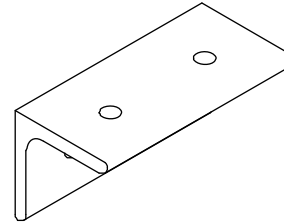


Unequal Header Bracket - 90° Corner Package

Includes:

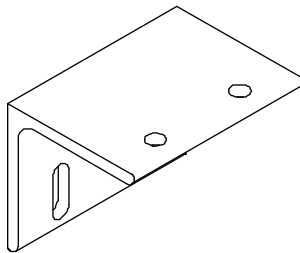
- 1 - Unequal header bracket
- 2 - #8 x 3/8" Phillips thread forming screws
- 2 - #7-19 x 1/2" Type AB Tek-2 full thread, stainless steel, flat head screws

PN
11800263



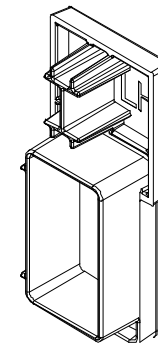
XOX Head Jamb Stationary Bracket

Color	PN
Aluminum	11102178



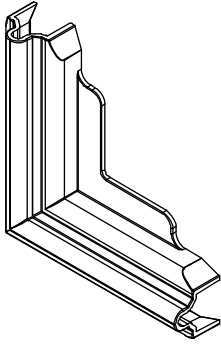
Nosing End Cap, HP

Color	Handing	PN
Black	RH	11102266
	LH	11102267
Beige DISC-LA	RH	11102170
	LH	11102171
Bronze DISC-LA	RH	11102172
	LH	11102173



Sill Corner Key Cover - 90° Corner

Color	PN
Black	11869907
Beige	11869908

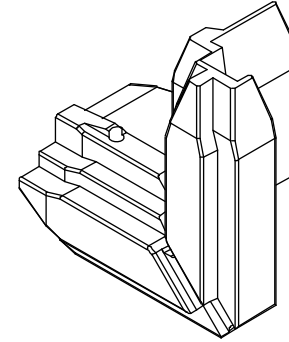


Head Corner Key Cover - 90° Corner

Includes:

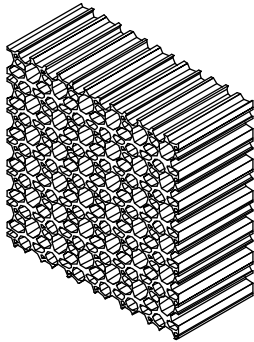
- 1 - Header corner key
- 2 - #8 x 3/8" Phillips head Plastite thread forming screws

Color	PN
Black	11800261



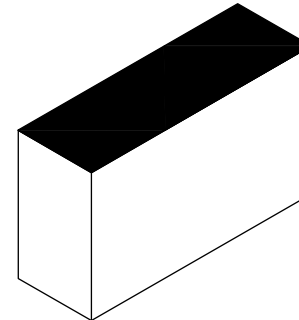
Sill Drain Filter

Color	PN
Black	10500240



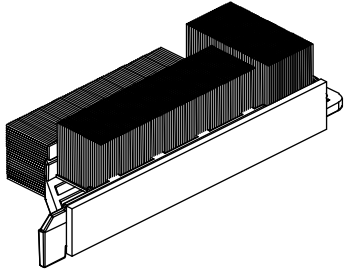
Header Part Stop Foam Seal

Color	PN
Black	10500436



Interior Interlock Bottom Seal Assembly

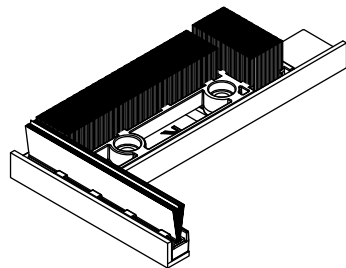
Handing	PN
LH	11102255
RH	11102256



LH part shown

Exterior Interlock Bottom Seal Assembly

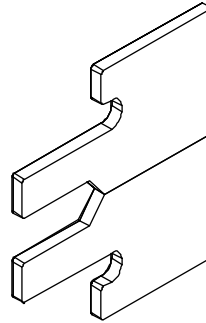
Handing	PN
LH	11102257
RH	11102258



RH part shown

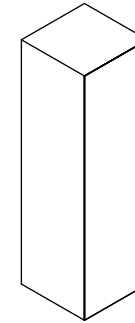
Pocket Interlock Gasket

Color	PN
Black	02101079



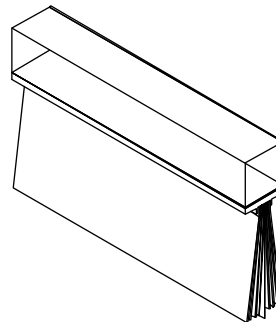
Sill Seal - 90° Corner

Color	PN
Black	10500085



Panel Sweep

Color	PN
Black	11100327
Beige	11100326

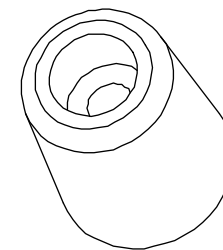


Stationary Bumper Kit

Includes:

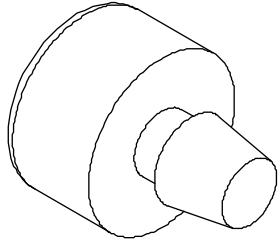
- 1 - .75 Rubber bumper
- 1 - #6-16 x 1 1/2" AB full thread screw

Color	PN
Black	11100321



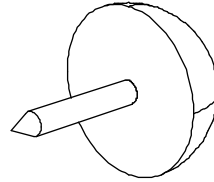
Rubber Bumper, 5/8"

Color	PN
Black	02101075



Thumb Tack Bumper

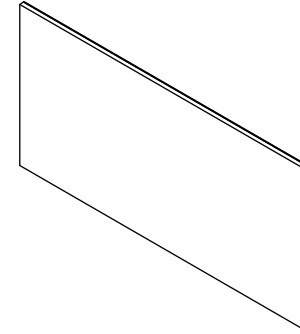
Color	PN
Black	02101077



Interior Flat Shim

Adhesive backed

Qty	PN
Pkg of 20	11102180

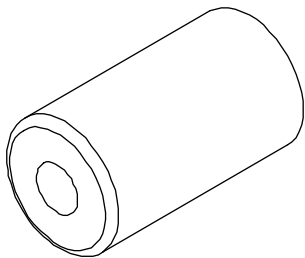


Pocket Recess Bumper Kit

Includes:

- 1 - Bumper, pocket jamb
- 1 - #8-18 x 3" AB full thread screw

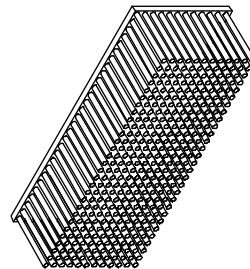
Color	PN
Black	11100324



Dust Block

Adhesive backed - 1 3/8" x 3/8" x 1/2"

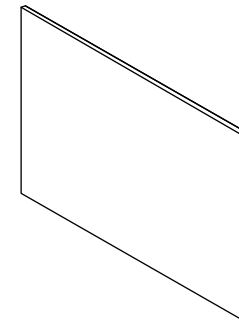
Color	PN
Black	15600009
Beige	15600011



Exterior Flat Shim

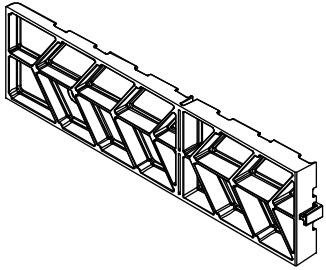
Adhesive backed

Qty	PN
Pkg of 20	11102179



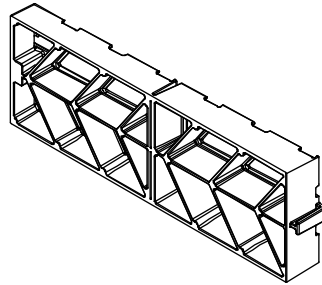
Interior Counter Shim

Color	PN
Black	11102175



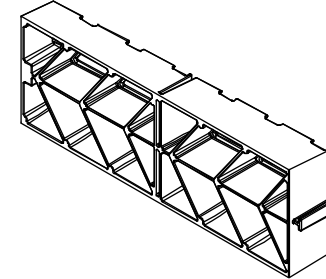
Middle Counter Shim

Color	PN
Black	11102174



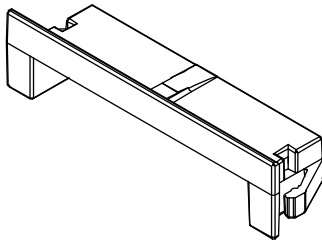
Exterior Counter Shim

Color	PN
Black	11102176



Weep Hole Cover

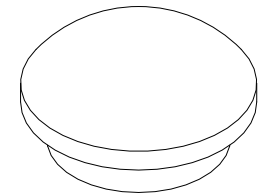
Color	PN
Black	10501910
Beige DISC-LA	10501936

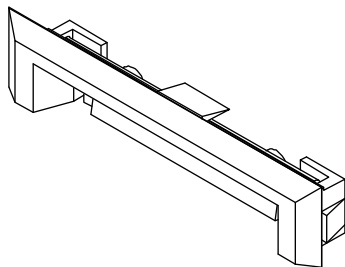


Roller Adjustment Hole Plug

NOTE: Birch is default, with the option of Cherry or Mahogany

Finish	Wood Species		
	Birch	Cherry	Mahogany
Bare	02074891	02074892	02074893
Prime	11100954	-	-
White (PIF)	11100937	-	-
Designer Black (PIF)	11100953	-	-
Clear	11100930	11100938	11100945
Wheat	11100931	11100939	11100946
Honey	11100932	11100940	11100947
Hazelnut	11100933	11100941	11100948
Leather	11100934	11100942	11100949
Espresso	11100935	11100943	11100950
Cabernet	11100936	11100944	11100951



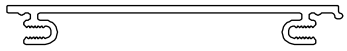


Weep Hole Cover

No longer available. Use current part.

Ordering specifications (use all that apply):

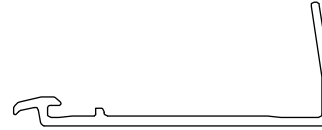
1. Original order number, line number (field calcs information)
2. Profile number
3. Total rough opening
4. Length
5. Handing
6. Color (where applicable)



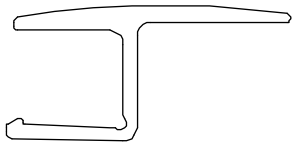
A2730
Modular Part Stop



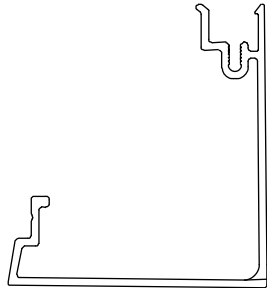
A2802
Exterior Interlocking Stile
Edge Cover



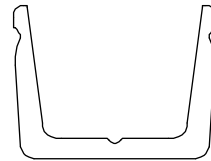
A2863
Sill Liner Nosing - HP
Pebble and Bronze
DISC-LA



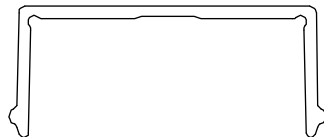
A2752
Exterior Astragal



A3268
Corner Cap



A2810
Stationary Sill Bracket - XOX
Shoe Reinforcement Leveling
Block Stationary Panel
Leveling Block

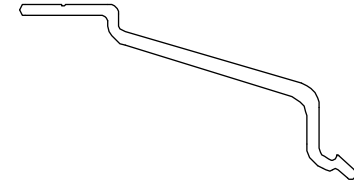


A2736
Sill Track Cover

Head Jamb Structural Clip

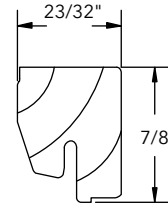
A2875

Length	PN
24" (610)	18778898

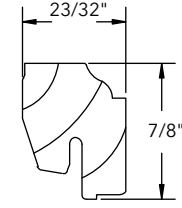


Ordering specifications (use all that apply):

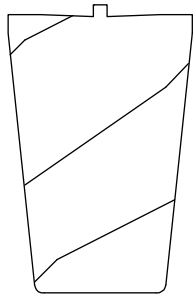
1. Original order number (field calcs information)
2. Profile number
3. Total rough opening
4. Sill type
5. Handing
6. Species
7. Finish (where applicable)



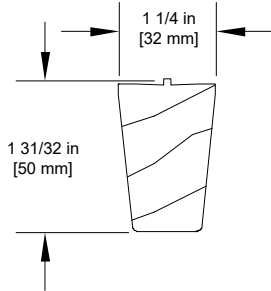
W12368
Square Glazing Cap



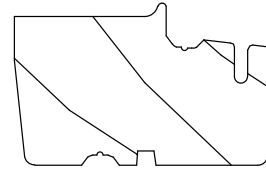
W12367
Ogee Glazing Cap



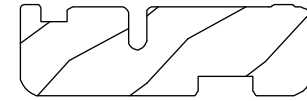
W1450
Mull Casing Cover



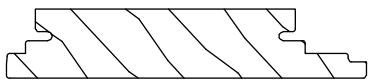
W11040
Mull Casing, HP



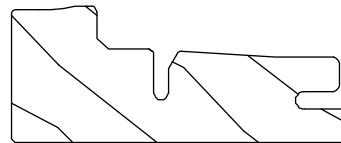
W1455
Mull Casing Base
Specify left or right hand



W12337
Interior Interlock Cover



W12359
Exterior Stationary Jamb Part Stop
Specify left or right hand



W12330
Interior Jamb Liner



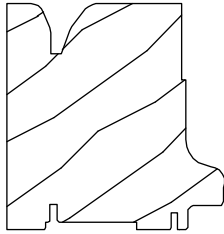
W12340
Stationary Jamb Part Stop



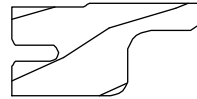
W12416
Jamb Filler

Ordering specifications (use all that apply):

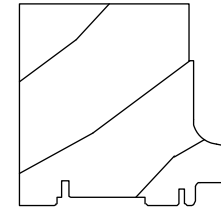
1. Original order number (field calcs information)
2. Profile number
3. Total rough opening
4. Sill type
5. Handing
6. Species
7. Finish (where applicable)



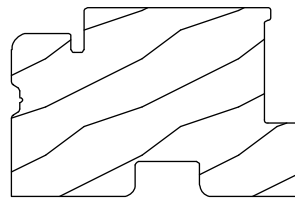
W12387
Pocket Stile Interlock Support Block
Specify left or right hand



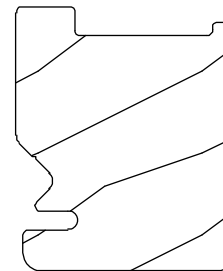
W12375
Pocket Stile Trim



W12516
1 Deep Pocket Interlock Support Block



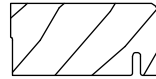
W13056
Stile Extension 90° Corner



W13059
90° Corner Cover

Ordering specifications (use all that apply):

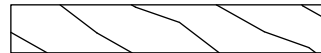
1. Original order number (field calcs information)
2. Profile number
3. Total rough opening
4. Sill type
5. Handing
6. Species
7. Finish (where applicable)



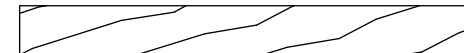
W12398
1 Deep Pocket Cover



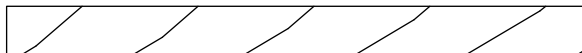
W12388
2 Deep Pocket Cover



W12400
3 Deep Pocket Cover



W12401
4 Deep Pocket Cover



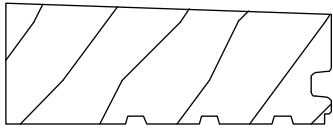
W12402
5 Deep Pocket Cover



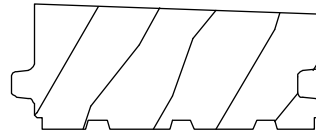
W12403
6 Deep Pocket Cover

Ordering specifications (use all that apply):

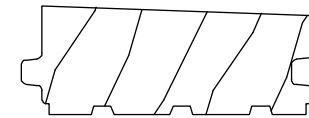
1. Original order number (field calcs information)
2. Profile number
3. Total rough opening
4. Sill type
5. Handing
6. Species
7. Finish (where applicable)



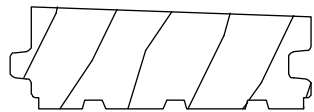
W12552
1 Track HP Wedge



W12553
2 Track HP Wedge



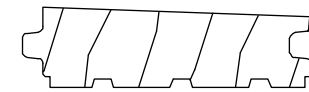
W12554
3 Track HP Wedge



W12582
4 Track HP Wedge



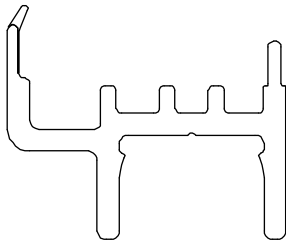
W12583
5 Track HP Wedge



W12584
6 Track HP Wedge

Ordering specifications (use all that apply):

1. Original order number, if available (field calcs information);
2. Panel type
3. Total rough opening
4. Profile number
5. Length
6. Handing
7. Color



V2492

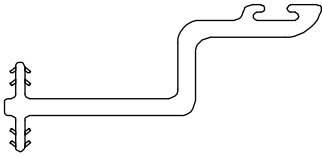
Shoe, Panel

(Specify panel type, if applicable)

Interior Interlock

V2423

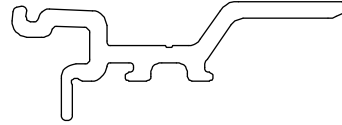
Length	Color	PN
141" (3581)	Black	15371212



Exterior Interlock

V2488

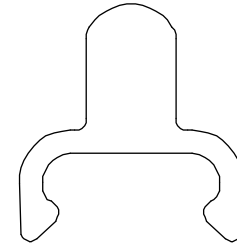
Length	Color	PN
142" (3607)	Black	11209812



Roller Track

V2426

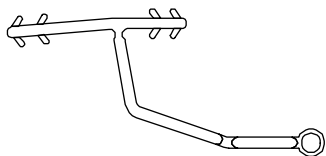
Length	Color	PN
150" (3810)	Black	15984899
	Beige	15984898



Glazing Bead

V2447

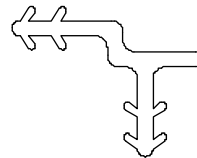
Length	Beige PN	Black
26 13/16" (681)	15371330	15371331
38 13/16" (986)	15371340	15371341
50 13/16" (1291)	15371350	15371351
73 1/2" (1867)	15371370	15371371
83" (2108)	15371380	15371381
95" (2413)	15371390	15371391
107" (2718)	15371310	15371311
131" (3327)	15371312	15371313



Connecting Barb

V087

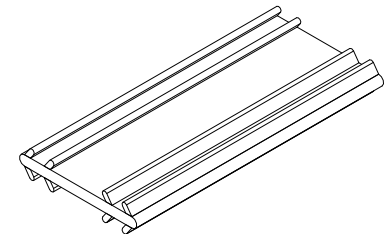
Length	Color	PN
147" (3734)	Beige	16000604



Connecting Barb

V803

Length	PN
Specify Length	15812999



Ordering specifications (use all that apply):

1. Original order/line number, if available (field calcs information)
2. Panel type (where applicable)
3. Total rough opening
4. Profile number
5. Length
6. Handing
7. Color

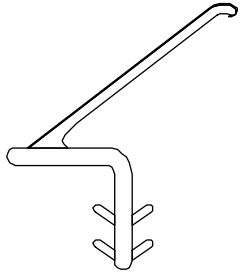


V2493
1/2" Pile Weather Strip

Mull Weather Strip

V2534

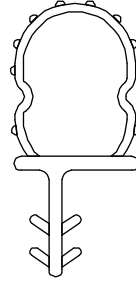
Length	Color	PN
140 3/4" (3575)	Black	11210513
	Beige	11210512



Sill Bulb Weather Strip

V2564

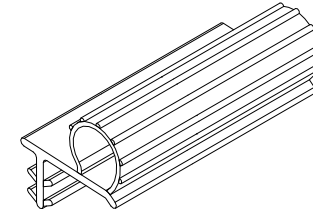
Length	Color	PN
144" (3558)	Black	11211299
	Beige	11211298



Jamb Bulb Weather Strip

V2475

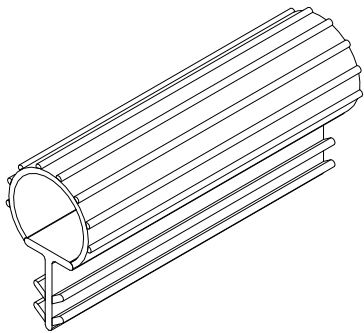
Length	Color	PN
144" (3558)	Black	11209699
	Beige	11209698



Corner Cap, Frame Weather Strip

V147

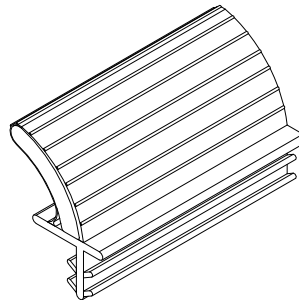
Length	Color	PN
150" (3810)	Black	17002299



Foam Leaf Interlock Stile Weather Strip

V1194

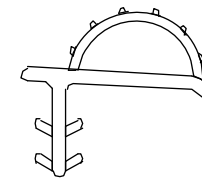
Length	Color	PN
Specify Length	Black	17003596
	Beige	17003595

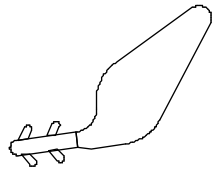


Frame Weather Strip, Head Jamb/Jamb

V2977

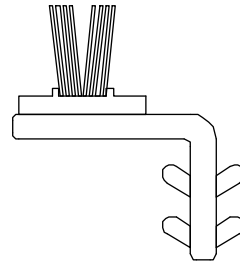
Length	Color	PN
200" (5080)	Black	16219275





V1138

No longer available,
replace with V1194



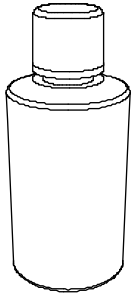
V2502

No longer available,
replace with V2977

Touch Up Paint - Brush

.6 oz. bottle with applicator, LG

Color	PN
Ebony	01530358



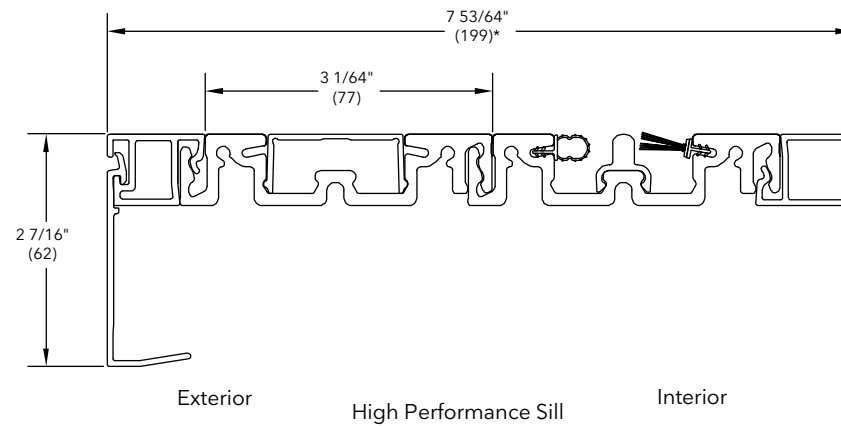
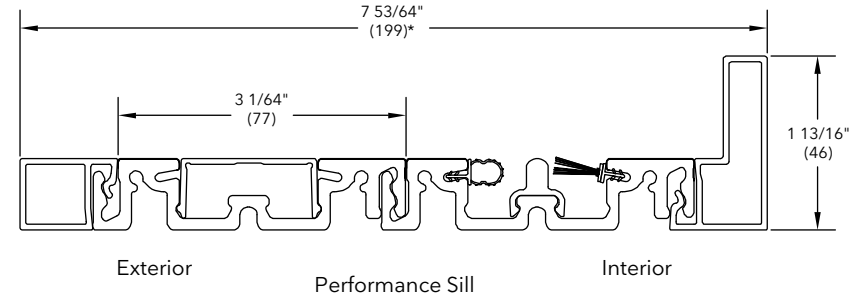
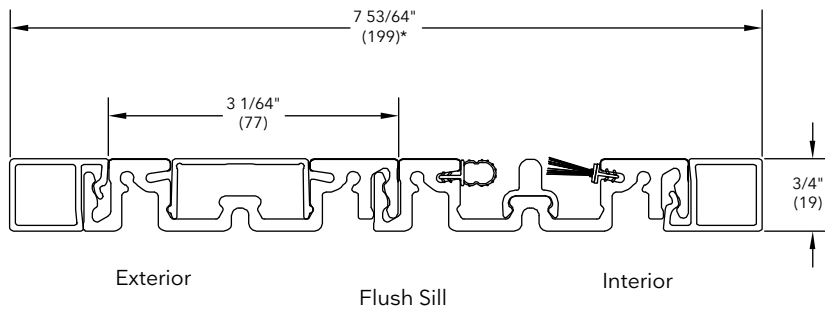
Ordering specifications (use all that apply):

1. Original order number/line number
2. Frame OM width or length of sill
3. Handing and configuration
4. Color*

NOTE: The entire sill assembly will have to be replaced prior to installation. If ordering a different sill color, panel shoes (V2492) must be ordered separately to match sill color.

NOTE: *Dimension varies base on number of tracks.

*** Beige and Bronze - DISC-LA**



Stacked Door

Information required to order replacement panels:

NOTE: Specify sill type, (Flush, HP or Performance), and original order number on all orders for replacement panels. Specify interior sticking profile (Ogee or Square). Panels ship complete, minus the options listed below. Handle sets available in Satin Nickel PVD or Bronze PVD. For XOX stationary panels, operator panel width and height or frame OM (width and height) must be provided.

Primary Active Panel - options

Panel with multi-point lock.

Panel with active trim set (color needed).

If panel interlocks with stationary panel, prep with bumpers.

Secondary Panel - options

If panel interlocks with stationary panel, prep with bumpers.

Primary Inactive Panel - options

Panel with strike plate.

Panel with inactive trim set (color needed).

If panel interlocks with stationary panel, prep with bumpers.

Primary Corner Inactive Panel - options

Panel with strike plate..

Panel with inactive trim set (color needed).

If panel interlocks with stationary panel, prep with bumpers.

Stationary Panel - no options, panel ships complete

Panel shoe color is determined by the color of the sill:

Black shoe = bronze sill, Beige shoe = beige sill.

Pocket Door

Information required to order replacement panels:

NOTE: Specify sill type, (Flush, HP or Performance) on all orders for replacement panels. Specify interior sticking profile (Ogee or Square). Panels ship complete, minus the options listed below. Trim sets available in Satin Nickel PVD or Bronze PVD.

Primary Active Panel - options

Panel with multi-point lock.

Panel with active trim set (color needed).

If panel interlocks with stationary panel, prep with bumpers.

Primary Active Pocket Panel - options

Panel with multi-point lock.

Panel with active handle set (color needed).

Secondary Panel - options

If panel interlocks with pocket panel, prep with bumpers.

Primary Inactive Panel - options

Panel with strike plate.

Panel with inactive handle set (color needed).

If panel interlocks with pocket panel, prep with bumpers.

Primary Inactive Pocket Panel - options

Panel with strike plate.

Panel with inactive handle set (color needed).

Primary Corner Inactive Panel - options

Panel with strike plate..

Panel with inactive handle set (color needed).

If panel interlocks with pocket panel, prep with bumpers.

Primary Corner Inactive Panel - options







Panel with strike plate..

Panel with inactive handle set (color needed).

Pocket Panel - no options, panel ships complete

Panel shoe color is determined by the color of the sill:

Black shoe = bronze sill, Beige shoe = beige sill.

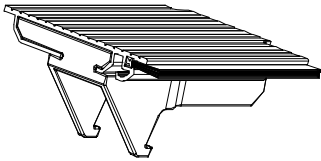
		Left Hand Screen	Right Hand Screen
Single Screen	Inside Building	<p>Inside</p> <p>P2   P1</p> <hr/> <p>Outside</p>	<p>Inside</p> <p>P2   P1</p> <hr/> <p>Outside</p>
Double Screen	Inside Building	<p>Inside</p> <p>P2   P1</p> <hr/> <p>Outside</p>	

To order full unit sill covers and screen cartridges,
refer to configured parts in OMS.

Ordering specifications:

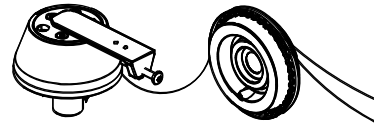
1. Original order number.

NOTE: Single screens: Marvin order number is found under the bottom stile cover on the opposite side of the tensioning springs. Double screens: Marvin order number is found under the bottom left hand stile cover on the opposite side of the tensioning springs (left hand when viewing from exterior).



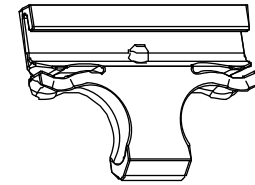
Sill Cover, Short End

Handing	Color	PN
LH	Clear Anodized	10504034
	Powder Bronze	10504044
	Powder White	10504046
	Powder Black	10504048
RH	Clear Anodized	10504035
	Powder Bronze	10504045
	Powder White	10504047
	Powder Black	10504049



Cone Assembly

Handing	PN
LH	10504102
RH	10504103



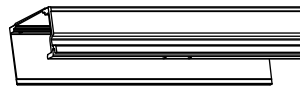
Screen Stop, Header, Bi-Parting

PN
10504106

Illustration not available

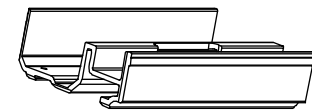
Cable

Color	PN
Black	10504098
Red	10504099
Yellow	10504100
Green	10504101



Splice Joiner

PN
10504139

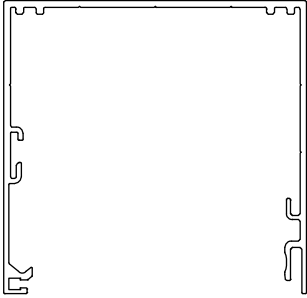


Splice Joiner, Sill

PN
10504175

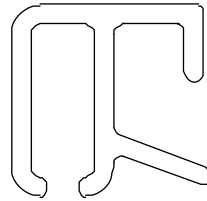
Ordering specifications:

1. Original order number;
2. Total rough opening;
3. Part length;
4. Handing;
5. Finish (where applicable),



Head Jamb Frame
Head Jamb Frame, Spliced

Note: Spliced is available in LH or RH configurations

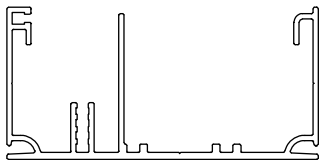


Tab Retainer, Head Jamb
Includes: Retainer clips



Head Cover
Head Cover, Spliced

Includes: Pile weather strip and retainer clips
Note: Spliced is available in LH or RH configurations.

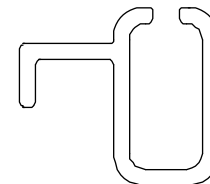


Sill, Frame
Sill, Spliced

Note: Spliced is available in LH or RH configurations



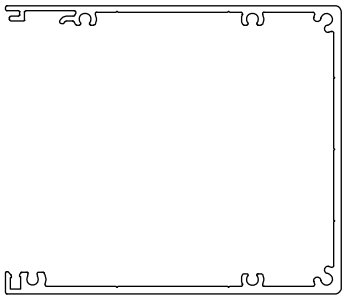
Sill Cover, Spliced
Includes: Pile weather strip and end caps
Note: Available in LH or RH configurations.



Tab Retainer, Sill
Tab Retainer, Sill, Spliced
Note: Spliced is available in LH or RH configurations.

Ordering specifications:

1. Original order number;
2. Total rough opening;
3. Part length;
4. Handing;
5. Finish (where applicable),



Frame, Jamb, No Cartridge
Jamb, Cartridge Side
Jamb, Bi-Parting

Note: Available in LH or RH configurations



Jamb Cover, Cartridge

Includes: Pile weather strip and retainer clips



Jamb Cover, Stationary

Includes: Magnets and retainer clips



Top Cartridge Bearing
No longer available



Top Handle Pull Assembly
No longer available



Bottom Handle Pull Assembly
No longer available



Bottom Cartridge Bearing
No longer available



Spool Kit
No longer available



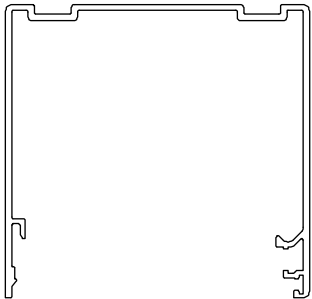
Cable
No longer available



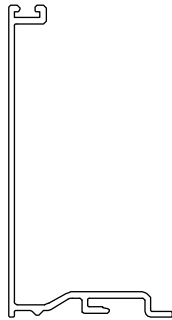
Bi-Parting Screen Stop
No longer available



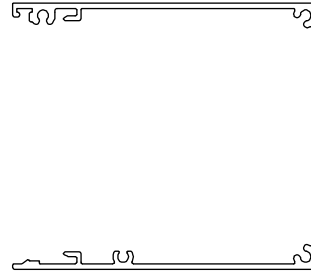
Handle Pull Covers/Spring Kit
No longer available



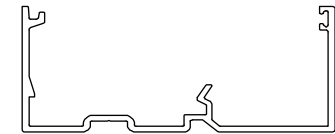
Head Jamb Frame
No longer available



Head Jamb/Jamb Cover
No longer available



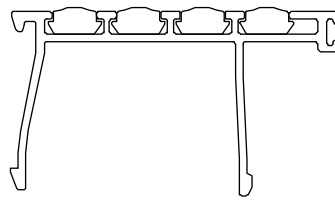
Jamb Frame
No longer available



Sill
No longer available



Jamb Stop
No longer available



Sill Cover with Rubber Insert
No longer available



Cartridge
No longer available