

# MODERN

MARVIN SIGNATURE® COLLECTION





THE SPIRIT OF MODERN DESIGN LIVES ON

## STUNNING IN BOTH ITS DESIGN AND ENGINEERING.

Create a purely modern aesthetic at an even larger scale with our Modern product line. Made with an innovative High-Density Fiberglass material and designed as a modular system, achieving consistently narrow sightlines for breathtaking views – with exceptional thermal performance – has never been easier.





# TABLE OF CONTENTS

6	<b>WINDOWS</b>
8	MODERN AWNING WINDOW
10	MODERN CASEMENT WINDOW
12	MODERN DIRECT GLAZE WINDOW
14	MODERN CORNER WINDOW
16	SKYCOVE®
18	<b>DOORS</b>
20	MODERN MULTI-SLIDE DOOR
24	MODERN SLIDING DOOR
24	MODERN SWINGING DOOR
26	<b>MARVIN CONNECTED HOME™</b>
32	MODERN AUTOMATED AWNING WINDOW
34	MODERN AUTOMATED CASEMENT WINDOW
36	MARVIN AWAKEN® SKYLIGHT
38	MODERN AUTOMATED MULTI-SLIDE DOOR
40	<b>MODERN DESIGN OPTIONS</b>
42	DIVIDED LITES
44	SILL OPTIONS
46	CURATED COLORS
48	HARDWARE FINISHES
50	SCREENS
52	MARVIN AT 7 TIDE



MAXIMUM VIEWS AND MINIMALIST DETAILS

MODERN WINDOWS





## MODERN AWNING WINDOW



MARVIN®

## MODERN AWNING WINDOW

- Modular in its design, it can be used on its own or mullied to direct glaze and casement windows (standard and automated) and the swinging door
- Choose among five color options inspired by the elements, with the option to split interior and exterior color finishes
- With both a push-out and a crank-out version, as well as an automated version (see page 32), it opens wide for unobstructed views and closes easily
- Thermally efficient to perform in demanding climates. Available in dual- and triple-pane options
- Integrated and removable screens do not intrude upon or restrict sight lines and daylight opening
- High-Density Fiberglass material and proprietary frame design help keep interior temperatures comfortable, while maintaining sight lines
- Thermoset finish resists scratching, marring, and fading



INTERIOR VIEW – PUSH-OUT AWNING  
SHOWN IN EBONY WITH MATTE BLACK HARDWARE



INTERIOR VIEW – CRANK-OUT AWNING  
SHOWN IN EBONY WITH MATTE BLACK HARDWARE

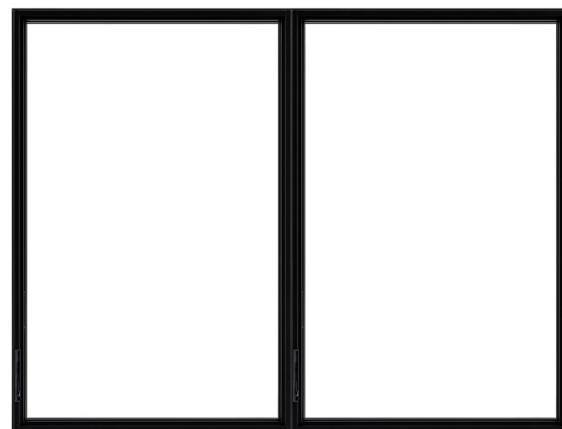


## MODERN CASEMENT WINDOW



## MODERN CASEMENT WINDOW

- Modular in its design, it can be used on its own or mulled to direct glaze and awning windows (standard and automated) and the swinging door
- Select a push-out configuration or a crank-out with right-hand or left-hand operation. An automated version is also available (see page 34)
- Thermally efficient to perform in demanding climates. Available in dual- and triple-pane options.
- Integrated and removable screens do not intrude upon or restrict sight lines and daylight opening
- Choose among five color options inspired by the elements, with the option to split interior and exterior color finishes
- Wash mode hinges allow for easy cleaning from the interior
- Available with Window Opening Control Device, providing peace of mind when safety is a concern
- Thermoset finish resists scratching, marring, and fading



INTERIOR VIEW – PUSH-OUT CASEMENTS  
SHOWN IN EBONY WITH MATTE BLACK HARDWARE



PUSH-OUT HARDWARE  
SHOWN IN MATTE BLACK



CRANK-OUT HARDWARE  
SHOWN IN MATTE BLACK



MODERN DIRECT GLAZE WINDOW



MODERN DIRECT GLAZE WINDOW

- Meets the exacting principles and standards of true modern architecture
- Part of a unified system intentionally designed to work together, letting you configure with ease and confidence
- Allows for maximum views with large expanses of glass
- High-Density Fiberglass material and proprietary frame design help keep interior temperatures comfortable while maintaining sightlines
- Thermally efficient to perform in demanding climates. Available in dual- and triple-pane options.
- Choose among five color options inspired by the elements, with the option to split interior and exterior color finishes
- Frame recess accepts a drywall return for seamless integration
- Thermoset finish resists scratching, marring, and fading



EXTERIOR VIEW – DIRECT GLAZE SHOWN IN EBONY

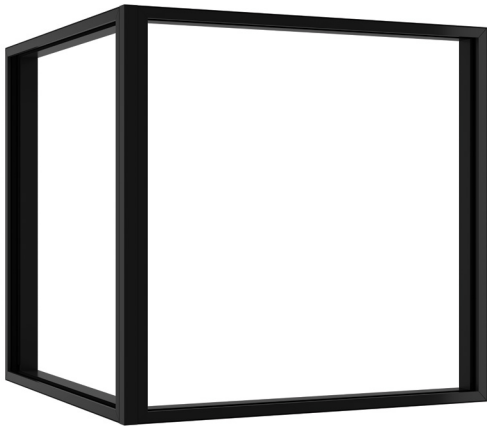


MODERN CORNER WINDOW

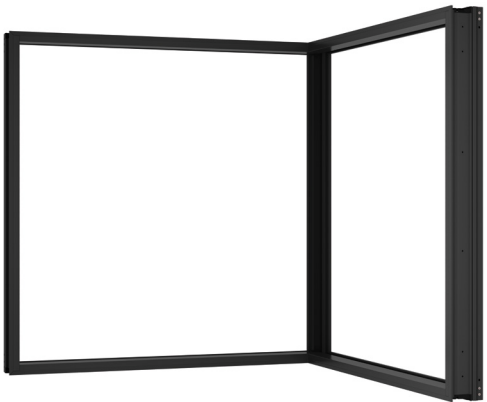


MODERN CORNER WINDOW

- Direct glaze units joined together at 90° to maximize views and light within interior spaces
- Meets the exacting principles and standards of true modern architecture
- Part of a unified system intentionally designed to work together, letting you configure with ease and confidence
- Allows for maximum views with large expanses of glass
- High-Density Fiberglass material and proprietary frame design help keep interior temperatures comfortable while maintaining sightlines
- Proprietary High-Density Fiberglass exterior for maximum strength
- Thermally efficient to perform in demanding climates. Available in dual- and triple-pane options
- Choose among five color options inspired by the elements, with the option to split interior and exterior color finishes
- Frame recess accepts a drywall return for seamless integration
- Thermoset finish resists scratching, marring, and fading



EXTERIOR VIEW - MODERN CORNER WINDOW SHOWN IN EBONY



INTERIOR VIEW - MODERN CORNER WINDOW SHOWN IN EBONY





## SKYCOVE®

- Opens up a room to panoramic views and ushers in restorative light from four directions, adding up to 20 square feet of usable space
- Creates an intimate nook to escape and relax, yet its seat is large enough for several people to gather
- Insulated seat cavity provides improved thermal performance for comfort in all temperatures
- 4° slope on top glass and flush glazing shed debris and prevent pooling
- Narrow sightlines allow for expansive, unobstructed views
- Choose among four exterior finishes and two interior finishes, with the option to mix and match
- Thermoset finish resists scratching, marring, and fading



EXTERIOR VIEW – SKYCOVE SHOWN IN EBONY



INTERIOR VIEW – SKYCOVE SHOWN IN EBONY



PERFORMANCE ON A GRANDER SCALE

MODERN DOORS





## MODERN MULTI-SLIDE DOOR



MARVIN®

## MODERN MULTI-SLIDE DOOR

- Allows for expansive views and connection to the outdoors with numerous configurations for easy operation
- Made with a durable High-Density Fiberglass exterior and a low-maintenance extruded aluminum interior
- Available in over 40 configurations. Stacked and pocket uni-directional, bi-parting, and center-stacked
- Consistent panel thickness with narrow stiles and rails, regardless of configuration or size
- Strong thermal efficiency - even in the most demanding climates. Available in dual- and triple-pane options.
- Features Flush Handle designed for a sleek and modern form
- Choose among five color options inspired by the elements, with the option to split interior and exterior color finishes
- An automated version is also available (see page 38)
- Thermoset finish resists scratching, marring, and fading



EXTERIOR VIEW – MULTI-SLIDE DOOR  
SHOWN IN EBONY WITH SATIN NICKEL HARDWARE



INTERIOR VIEW – MULTI-SLIDE DOOR  
SHOWN IN EBONY WITH MATTE BLACK HARDWARE



MODERN SLIDING DOOR

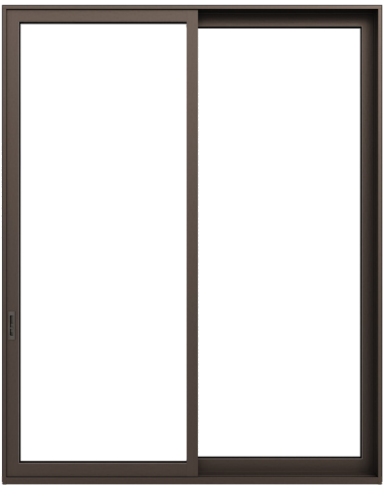


MODERN SLIDING DOOR

- Pairs authentic modern design with thermal performance for design flexibility
- Made with a durable High-Density Fiberglass exterior and a low-maintenance extruded aluminum interior
- Strong thermal performance - even in the most demanding climates. Available in dual- and triple-pane options.
- Modular design enables stationary panel mulling
- Available in O, XO, OX, XOO, OOX, OXO, and OXXO configurations
- Features Flush Handle designed for a sleek and modern form
- Choose among five color options inspired by the elements, with the option to split interior and exterior color finishes
- Expansive glass with up to four panels and widths up to 5' and heights up to 12'
- Thermoset finish resists scratching, marring, and fading



EXTERIOR VIEW - SLIDING DOOR SHOWN IN BRONZE WITH MATTE BRONZE HARDWARE



INTERIOR VIEW - SLIDING DOOR SHOWN IN BRONZE WITH MATTE BRONZE HARDWARE



HARDWARE SHOWN IN MATTE BLACK



## MODERN SWINGING DOOR



## MODERN SWINGING DOOR

- Pairs pure modern aesthetic with category-leading performance for design flexibility
- Inswing and outswing options are available for when limited space or exposure to the elements are considerations
- Available in X, O, XO, OX, and XX configurations, with unequal panel widths
- Strong thermal efficiency - even in the most demanding climates. Available in dual- and triple-pane options.
- Features Minimalist Handle, escutcheon and two squared hinges per panel to provide a cleaner look and less disruption
- Modern windows and swinging doors can be mulled directly to swinging door jambs, allowing for a wide range of configurations
- Thermoset finish resists scratching, marring, and fading



EXTERIOR VIEW – OUTSWING DOOR  
SHOWN IN GUNMETAL WITH MATTE  
BLACK HARDWARE



EXTERIOR VIEW – INSWING DOOR  
SHOWN IN GUNMETAL WITH MATTE  
BLACK HARDWARE



HARDWARE SHOWN IN MATTE BLACK



MODERN AUTOMATED  
AWNING WINDOW  
NOW A SOLUTION TO OPERATE CLERESTORY WINDOWS

MARVIN CONNECTED HOME

SMART SOLUTIONS

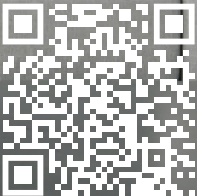
MODERN  
AUTOMATED  
CASEMENT  
WINDOW

MODERN  
CASEMENT  
WINDOW  
STANDARD

MODERN  
AWNING  
WINDOW  
STANDARD

MODERN AUTOMATED  
MULTI-SLIDE DOOR

MARVIN AWAKEN® SKYLIGHT NOT PICTURED.  
LEARN MORE ABOUT THESE PRODUCTS HERE.







WELCOME TO  
MARVIN CONNECTED HOME

Where stunning design and smart technology seamlessly merge to give you more convenience and control over air, light, and views. These innovative, smart window and door solutions are engineered to deliver integrated technology that luxuriously harmonizes with the world around them for truly effortless living.

BEAUTIFUL VIEWS ARE JUST THE BEGINNING. DISCOVER CONVENIENT AND CUSTOMIZED SOLUTIONS WITH AUTOMATED WINDOW AND DOOR TECHNOLOGY THAT DELIVERS:



**EFFORTLESS CONTROL**

Easily control windows, skylights, and doors for accessing and enhancing airflow and natural light. Customize schedules and scenes for waking up, winding down, and everything in between. Choose preferred control options, including home automation systems, voice assistants, Marvin Home App, on-unit controls or wall switches.



**SEAMLESS INTEGRATION**

Connect with Amazon® Alexa® to enable voice assistant. Plus, Marvin Connected Home integrates with select home automation systems like Crestron® Home and Control4®, for a seamless smart home experience.



**RESPONSIVE TECHNOLOGY**

Program smart windows and skylights to automatically respond to outdoor conditions, such as temperature and humidity.



**PEACE OF MIND**

On-unit sensors keep rain and moisture out of your home. Rest easy knowing windows and skylights will automatically close when moisture is detected.



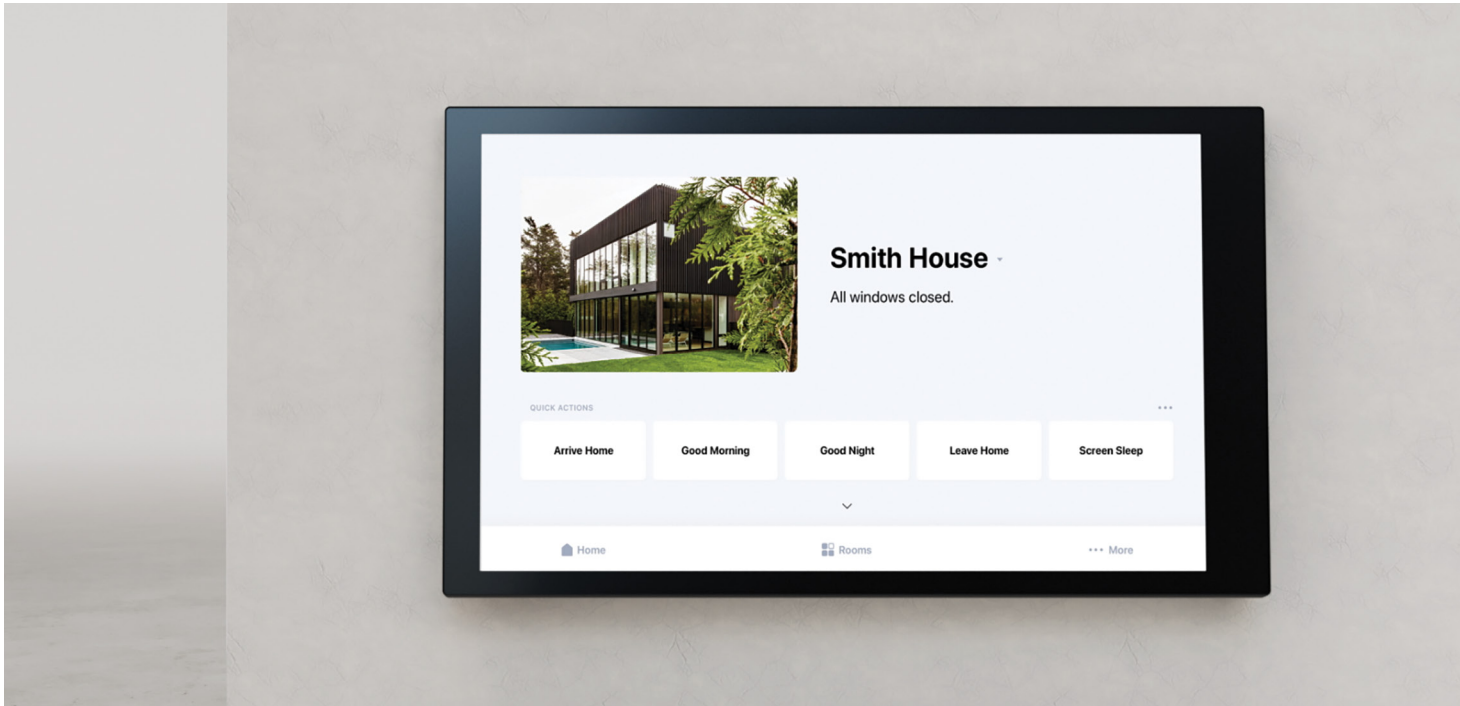
**MODERN DESIGN AND AESTHETICS**

Simplicity, product ingenuity, and clean aesthetics create a seamless design experience, with stunning results.



FIVE FLEXIBLE  
MODES OF CONTROL

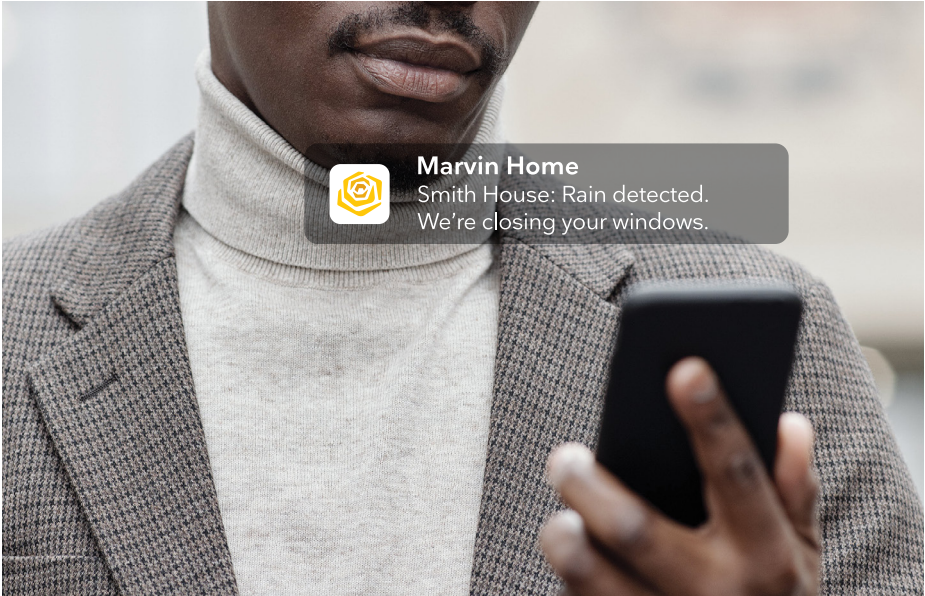
Make the most of your smart windows and doors. Choose your preferred methods of connectivity and control from these five options. **It's that effortless.**



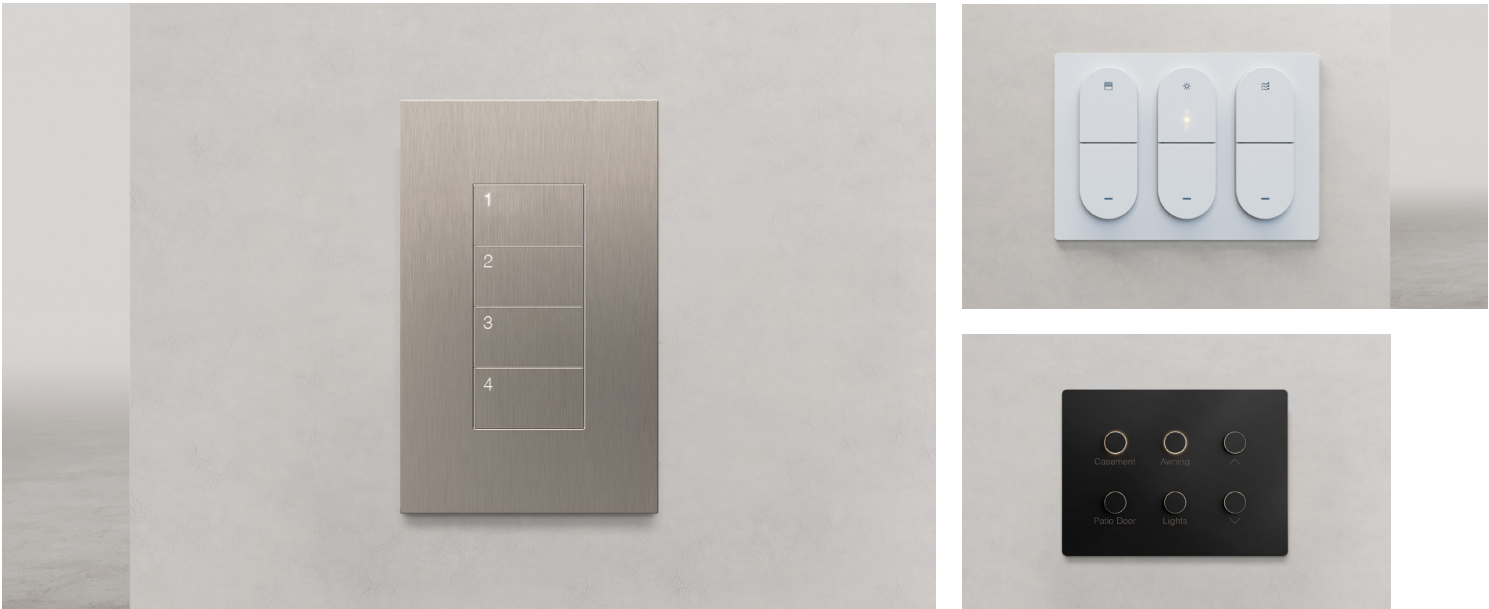
1. HOME AUTOMATION SYSTEMS (CRESTRON® HOME AND CONTROL4®)



2. VOICE ASSISTANTS (AMAZON® ALEXA®)



3. MARVIN HOME APP (AVAILABLE ON GOOGLE PLAY® AND THE APPLE APP STORE®)



4. THIRD-PARTY SWITCH (LEFT), MARVIN AWAKEN® SKYLIGHT REMOTE (TOP RIGHT) , THIRD-PARTY CONTROL (BOTTOM RIGHT)



5. ON-UNIT CONTROLS (AWNING AND CASEMENT)



## MODERN AUTOMATED AWNING WINDOW



## MODERN AUTOMATED AWNING WINDOW

- Open and close windows, check status, and operate clerestory windows
- Create scenes, set schedules, and deliver fresh air into the home. (Some features may require a third-party solution, like a voice assistant or home automation system.)
- Choose among five modes of control, including home automation systems, voice assistants, Marvin Home App, on-unit controls, and wall switches
- Integrated sensors automatically close window when moisture is detected or power is lost
- Integrated motors deliver ultra-quiet sound performance
- Concealed hardware creates expansive direct glaze window-like silhouettes
- Seamless integration with standard Modern windows with same exterior and interior colors and profiles
- Proprietary High-Density Fiberglass provides superior strength and thermal performance
- Safety features like pinch detection ensure the window won't close when obstructed
- Thermoset finish resists scratching, marring, and fading



EXTERIOR VIEW – MODERN AUTOMATED AWNING  
SHOWN IN EBONY WITH MATTE BLACK HARDWARE



ON-UNIT CONTROL –  
ALSO AVAILABLE IN STONE WHITE  
APPROXIMATE SIZE





## MODERN AUTOMATED CASEMENT WINDOW

- Open and close windows, check status, and operate clerestory windows
- Create scenes, set schedules, and deliver fresh air into the home. (Some features may require a third-party solution, like a voice assistant or home automation system.)
- Choose among five modes of control, including home automation systems, voice assistants, Marvin Home App, on-unit controls, and wall switches
- Integrated sensors automatically close window when moisture is detected or power is lost
- Integrated motors deliver ultra-quiet sound performance
- Concealed hardware creates expansive direct glaze window-like silhouettes
- Seamless integration with standard Modern windows with same exterior and interior colors and profiles
- Proprietary High-Density Fiberglass provides superior strength and thermal performance
- Manually operable on units large enough to meet egress
- Safety features like pinch detection ensure the window won't close when obstructed
- Thermoset finish resists scratching, marring, and fading



EXTERIOR VIEW – MODERN AUTOMATED CASEMENT  
SHOWN IN EBONY WITH MATTE BLACK HARDWARE



ON-UNIT CONTROL –  
ALSO AVAILABLE IN STONE WHITE  
APPROXIMATE SIZE



## MARVIN AWAKEN® SKYLIGHT



## MARVIN AWAKEN® SKYLIGHT

- Customize skylight with optional perimeter screen, dimmable and tunable LED lighting, and room-darkening or light-filtering shade
- Largest operating skylight on the market
- Opens on all four sides for faster and more efficient air circulation
- Integrated sensors automatically close window when moisture is detected or power is lost
- Hidden perimeter screen design keeps out insects and debris without obscuring the view
- Flexible control options include home automation systems, voice assistants, Marvin Home App, and wall remote
- Thermoset finish resists scratching, marring, and fading



EXTERIOR VIEW – MARVIN AWAKEN® SKYLIGHT SHOWN IN EBONY

WALL REMOTE  
SEE PAGE 30 FOR ALL MODES OF CONTROL.





# MODERN AUTOMATED MULTI-SLIDE DOOR



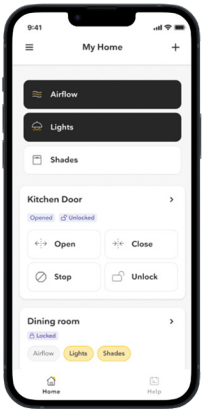
MARVIN®

## MODERN AUTOMATED MULTI-SLIDE DOOR

- With an expansive size, its one-of-a-kind frame delivers strength, durability, and energy efficiency
- Uni-directional configurations: 1 to 6 panels, available in stacked or pocket; Bi-parting configurations: 2 to 10 panels, available in stacked or pocket
- Choose among four modes of control, including home automation systems, voice assistants, Marvin Home App, and wall switches (9-in-1 touch screen and exterior wall switch included at no additional cost)
- Choosing the automated multi-slide door allows even the most expansive doors to be operated with the push of a button
- In case of a power outage, battery backup provides confidence the door will still open and close
- Have peace-of-mind knowing the status of the door's mechanical and magnetic locks. Use the Marvin Home App to remotely lock or unlock the magnetic lock. (The magnetic lock is inside the door and securely locks the door in place.)
- Option to program your door to open and close using the interior and exterior motion sensor and the wave motion sensor
- Choose among five color options inspired by the elements, with the option to split interior and exterior color finishes
- Thermoset finish resists scratching, marring, and fading



EXTERIOR VIEW – MODERN AUTOMATED MULTI-SLIDE DOOR SHOWN IN EBONY WITH MATTE BLACK HARDWARE



MARVIN HOME APP  
SEE PAGE 28 FOR ALL MODES OF CONTROL.

Add automation by ordering the sliding door automatic control at your Marvin dealer.



MODERN DESIGN OPTIONS

AUTHENTIC DETAILS





DIVIDED LITES

Achieve a unique aesthetic with divided lites on any Modern window or door (not available with Skycove® or Awaken® Skylight). Select from a variety of customizable patterns, available on both dual-pane and triple-pane products.

PICTURED RIGHT: EXTERIOR DETAIL OF SIMULATED DIVIDED LITES IN EBONY

PICTURED BELOW: MODERN INSWING DOOR



SIMULATED DIVIDED LITES (SDL)

Aluminum interior + exterior

7⁄8 inch or 1 1⁄8 inches width

SIMULATED FRAME

Aluminum interior, High-Density Fiberglass exterior

2 7⁄8 inches width





SILL OPTIONS

We've innovated every aspect of the Modern product line, right down to the smallest details. We offer flush sill options for both temperate and inclement conditions, as well as a performance sill for areas where recessing isn't an option.

Modern door sills are engineered with our proprietary High-Density Fiberglass, with the exception of the Modern Sliding door sill, which is engineered with Ultrex®. All door sills are available in ebony or bronze with aluminum liners and covers, with the exception of the saddle sill. (See below.)

PICTURED RIGHT: DETAIL OF THE FLUSH SILL

MULTI-SLIDE DOOR SILL OPTIONS



FLUSH SILL

Recommended for protected areas

Not certified for performance

ADA capable when installed properly



PERFORMANCE SILL

Recommended for areas where performance is needed and the sill is not recessed

Rated and certified for performance

Not ADA capable

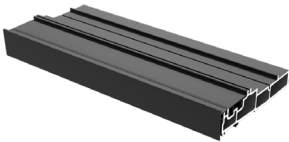


HIGH-PERFORMANCE SILL

Rated and certified for superior performance

ADA capable when installed properly

SLIDING DOOR SILL OPTIONS

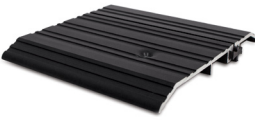


PERFORMANCE SILL

Rated and certified for performance

Not ADA capable

SWINGING DOOR SILL OPTIONS



SADDLE SILL

Not certified for performance

ADA compliant

Only available in thermally broken aluminum and in dark bronze



LOW-PROFILE SILL

Rated and certified for performance

ADA capable when installed properly



PERFORMANCE SILL

Rated and certified for performance

Not ADA capable





CURATED COLORS

Our intentionally selected color palette evokes the elemental nature of modern design. Choose split interior and exterior color finishes or matching finishes designed to coordinate.



GUNMETAL

BRONZE

EBONY

CLEAR ANODIZED

STONE WHITE

GUNMETAL

BRONZE

EBONY

SILVER

STONE WHITE





HARDWARE FINISHES

From low-profile handles to nested locks, our hardware is designed to complement clean, modern lines while delivering reliable performance. Select from a variety of finishes to fit your vision. Door hardware is available with split finishes interior and exterior.

**PICTURED ABOVE: CASEMENT AND AWNING CRANK-OUT HARDWARE, AUTOMATED CASEMENT AND AWNING ON-UNIT CONTROLS, AND MULTI-SLIDE DOOR INTERIOR AND EXTERIOR MULTI-POINT LOCK SYSTEM HANDLES**



SCREENS

Available for crank-out, push-out, and automated casement and awnings. Retractable screens are available for the swinging doors and multi-slide doors and a sliding screen is available for the sliding door.

PICTURED RIGHT: MODERN AWNING WINDOW

PICTURED BELOW: MODERN CASEMENT CRANK-OUT WINDOW



WINDOWS

Screen frame does not disrupt sightlines and daylight openings

Marvin Bright View™ mesh

Innovative latch color matched to the interior

DOORS

Retractable screen is available for swinging doors and multi-slide doors; made with charcoal mesh

Sliding screen is available for sliding doors; made with Marvin Bright View™ mesh





VISUALIZE YOUR PLAN

EXPERIENCE MARVIN AT 7 TIDE

No matter where you are in the country or in the build process, Marvin at 7 Tide, located in Boston, can help turn your vision into reality with either an in-person or virtual visit. This one-of-a-kind experience pairs you with an expert to guide you through your window and door selections and design options with a visualization tool.

To learn more and book an appointment, visit [marvin.com/marvin-at-7-tide](https://marvin.com/marvin-at-7-tide)







Since 1912, Marvin has been a family-owned and -led company, with a legacy of innovation and commitment to the highest quality. We understand the unique opportunity windows and doors have to improve our spaces and how we feel in them. That's why we never stop pushing what's possible and inventing new solutions to channel fresh air, enhance light quality, and connect with the world around us.

**MARVIN.COM/MODERN**

©2025 Marvin Lumber and Cedar Co., LLC. All rights reserved.  
®Registered trademark of Marvin Lumber and Cedar Co., LLC.

Amazon and Alexa are registered trademarks of Amazon Technologies, Inc. Crestron Home is a registered trademark of Crestron Electronics, Inc. Control4 is a registered trademark of Snap One, LLC. App Store is a registered trademark of Apple Inc. Google Play is a registered trademark of Google LLC.

Information regarding status of patent applications, as well as product features and specifications, is subject to change without notice.

Part #19983465. November 2025.

Colors shown in printed materials are simulations and may not precisely duplicate product or finish colors. Contact your local Modern dealer to view actual product and finish color samples.