



Vivid Direct Glaze

Replacement
Parts

Specifications and technical data are subject to change without notice.

Numbers listed in () parentheses are metric equivalents in millimeters rounded to the nearest whole number.

Suggested fasteners are not included and must be ordered separately.

Illustrations are not to scale.

Contents

Product History.....2

Part Identification.....3

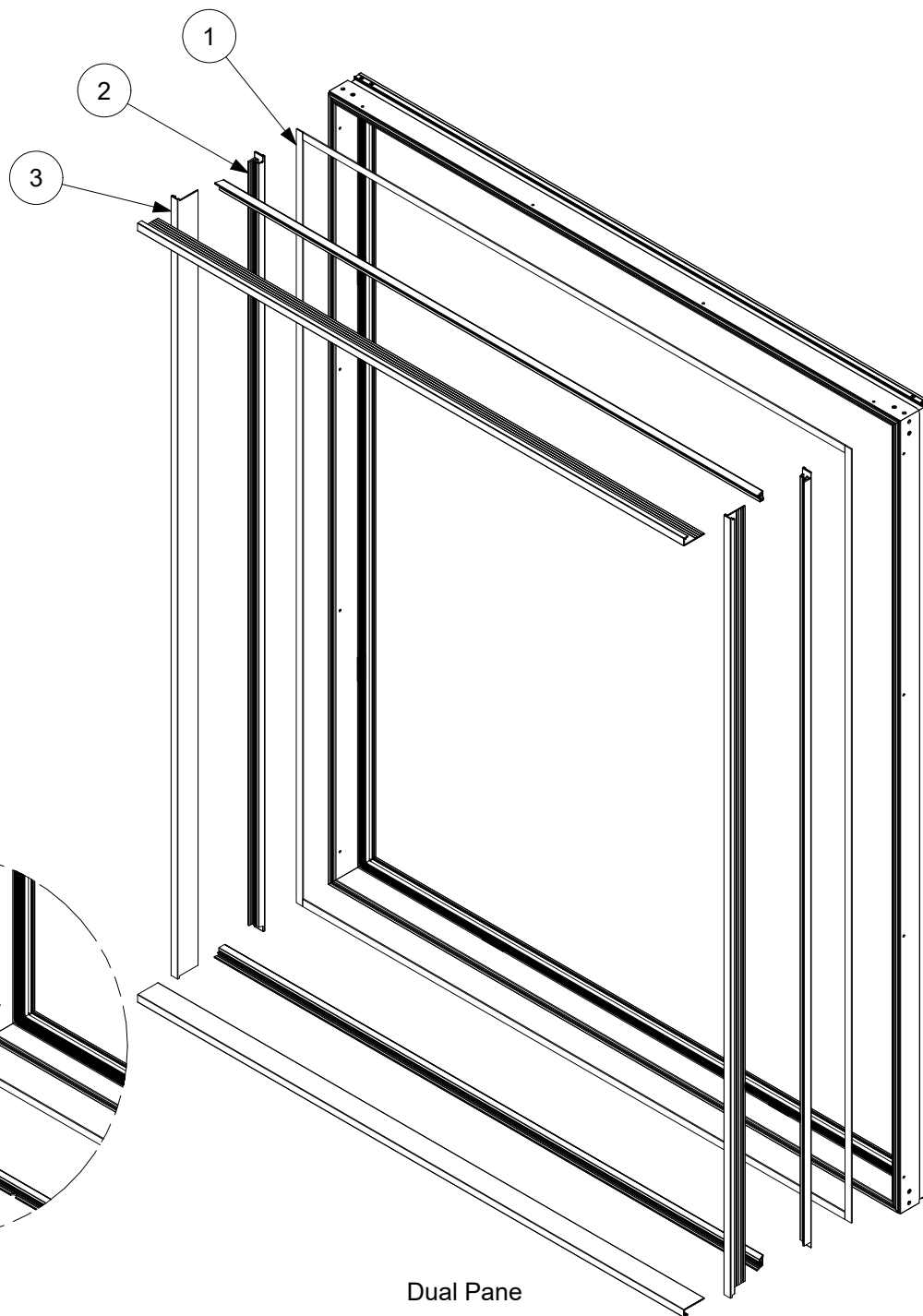
Glass Replacement - Configured Parts in OMS4

Glass Replacement Parts - Configured Parts in OMS5

Glass Replacement6

Weather Strip7

Produced	Unit Type	Features and Changes
2025	Direct Glaze	09/29/2025: Introduced Vivid Direct Glaze

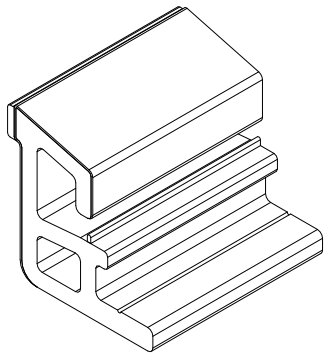


Triple Pane

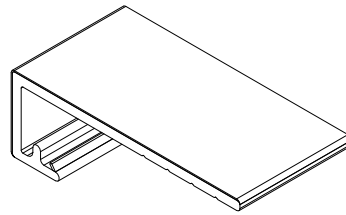
Dual Pane

Ordering specifications (use all that apply):

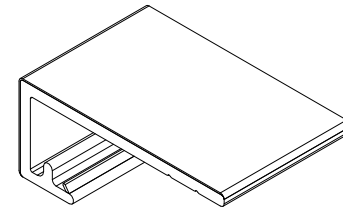
1. OM of frame or glass
2. Glazing
3. Interior color
4. GBG or SDL pattern



Glazing Bead, Beveled, H1064



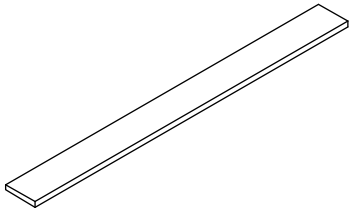
Screw Cover, 2 1/16\", H1068



Screw Cover, 1 5/8\", H1069

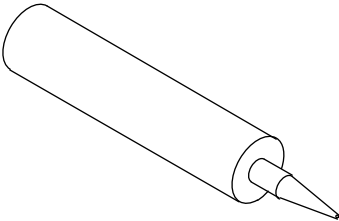
Glazing Tape

Length	PN
Specify LF	11406212



Silicone Tube

Direct Glaze Rectangle Dow 995	
Color	PN
Black	11407064



Standard Mull Tape

Color	Length	PN
Black	100 ft	10500050

