



# Ultimate Wood Inswing French Door Arch Top

## Contents

### Replacement Parts

Specifications and technical data are subject to change without notice.

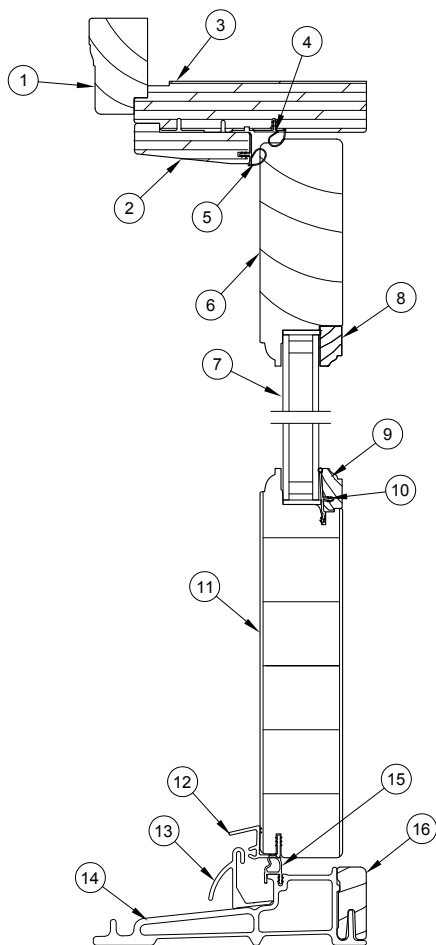
Numbers listed in ( ) parentheses are metric equivalents in millimeters rounded to the nearest whole number.

Suggested fasteners are not included and must be ordered separately.

Illustrations are not to scale.

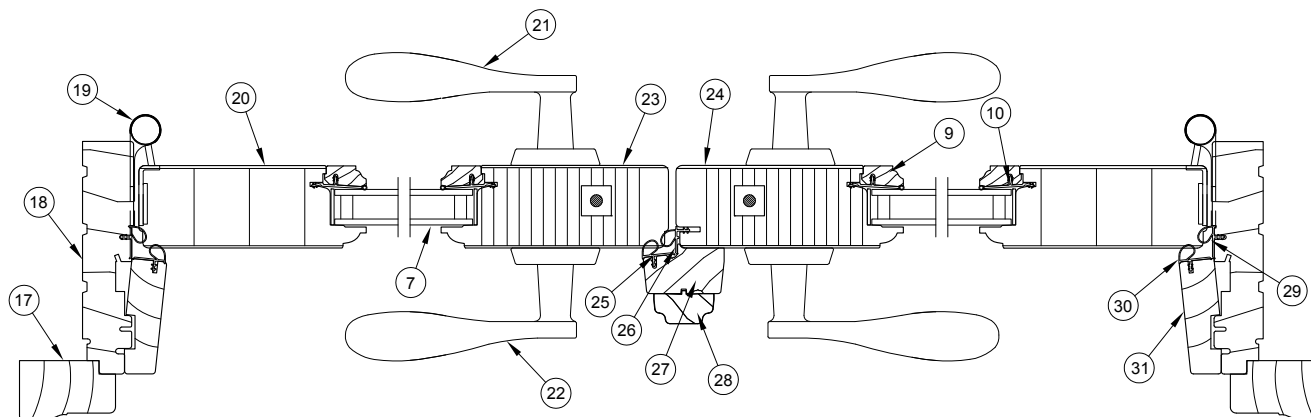
|   |    |
|---|----|
| Product History.....  | 2  |
| Part Identification - Operator XX L.....                              | 3  |
| Installation Parts.....   | 4  |
| Traditional Handle.....   | 5  |
| Contemporary Handle .....   | 11 |
| Handle - Keyed Cylinder.....  | 16 |
| Handle Set - Discontinued No Availability (NA).....                   | 17 |
| Hinge Hanging Location .....  | 18 |
| Hinges.....   | 19 |
| Hinges - Discontinued No Availability (NA).....                       | 21 |
| Locking Hardware .....  | 22 |
| Miscellaneous Parts .....   | 26 |
| Miscellaneous Parts - Discontinued No Availability (NA).....          | 27 |
| Aluminum Parts .....  | 32 |
| Fiberglass Parts.....   | 33 |
| Fiberglass Parts - Discontinued No Availability (NA).....             | 34 |
| Vinyl Parts.....  | 35 |
| Vinyl Parts - Discontinued Limited Availability (LA).....             | 37 |
| Vinyl Parts - Discontinued No Availability (NA).....                  | 38 |
| Wood Parts.....   | 39 |
| Wood Parts - Discontinued No Availability (NA).....                   | 40 |
| Weather Strip .....   | 41 |
| Weather Strip - Discontinued Limited Availability (LA).....           | 42 |
| Weather Strip - Discontinued No Availability (NA).....                | 43 |
| Panel Replacement .....   | 44 |
| Combination Door - Wood Parts .....                                   | 45 |
| Combination Door - Vinyl Parts .....                                  | 46 |
| Combination Door Parts - Discontinued Limited Availability (LA) ..... | 47 |
| Combination Door Parts - Discontinued No Availability (NA).....       | 49 |

| Produced | Unit Type                                  | Features and Changes   |
|----------|--|--|
| 1991     | Ultimate Wood Inswing French Door Arch Top | Unit features 3/4" interior glazed insulating glass, 4 9/16" jambs, multi-point hardware with solid brass handles and hinges, beige Lexan sill and beige external component parts. One panel doors feature 32 3/32" frame radius, two panel doors feature 63 5/8" frame radius. Units available in CN 6-8, CN 7-0 and CN 8-0 heights. All bottom rails 8 1/8". Pine interior trim and plinth blocks standard. Inswing unit features 4 9/16" or 6 9/16" one piece frame (extended to the exterior).<br>Exterior factory finish available.<br>Combination introduced featuring interchangeable screen and storm inserts and complete brass hardware. |
| 1992     | Ultimate Wood Inswing French Door Arch Top | Simulated divided lite option introduced.  |
| 1993     | Ultimate Wood Inswing French Door Arch Top | Optional oak interior trim and plinth blocks introduced.   |
| 1994     | Ultimate Wood Inswing French Door Arch Top | Beige Lexan sill changed to beige composite sill.  |
| 2000     | Ultimate Wood Inswing French Door Arch Top | 9/25/2000: Redesign to match current rectangle Inswing and Outswing door designs.<br>Combination redesign.   |
| 2002     | Ultimate Wood Inswing French Door Arch Top | 8/0 height decreases by 2 1/2 inches.  |
| 2003     | Ultimate Wood Inswing French Door Arch Top | 3/31/2003: Satin Taupe (TP) hardware replaces Brass as standard hardware. Standard door now includes hardware (no lock, no bore now an option). Strikes for Satin Taupe, Brushed Chrome, Polished Chrome and White are Stainless Steel.<br>7/2003: Ultimate French Door Arch Top introduced. Change in Rough Opening radius for one panel doors to 40 1/2" and for two panel doors to 72 1/2".<br>Added radius SDL.  |
| 2004     | Ultimate Wood Inswing French Door Arch Top | 1/2004: Added Oil Rubbed Bronze and Satin Chrome to available hardware finishes.<br>4/12/2004: Satin Nickel hardware finish introduced.<br>Polished chrome finish hardware is retired.   |
| 2005     | Ultimate Wood Inswing French Door Arch Top | Arch Top Doors become Ultimate Arch Top Doors. Inswing sills upgraded for water infiltration introduced optional bronze ultrex sill with black weatherstrip.<br>6/15/2005: Changed jamb leaf on adjustable hinge to closed knuckle design.<br>6/27/2005: Introduced Brass PVD and Satin Nickel PVD finishes to French door handles, adjustable hinges, and other miscellaneous parts.  |
| 2007     | Ultimate Wood Inswing French Door Arch Top | 2/20/2007: Introduced raised and flat panels as a standard option for Marvin French Doors and Commercial Doors. Introduced new Ultimate Swinging Screen along with an optional Storm Plus Insert.  |
| 2009     | Ultimate Wood Inswing French Door Arch Top | 3/23/2009: Added LoE3-366 as a standard option for all products.   |
| 2011     | Ultimate Wood Inswing French Door Arch Top | 04/25/2011: Added LoE-180 as a standard option for all products. White painted interior finish option introduced for all products.   |
| 2012     | All  | 7/30/2012: Stave Core added to our description for current finger joint/edge glue construction of door panels. Updated adjustable hinge.<br>10/29/2012: Interior Square Sticking/Glazing Bead option introduced.<br>12/17/2012: Introduced Clear Interior Finish option on all products.   |
| 2013     | Ultimate Wood Inswing French Door Arch Top | 4/29/2013: Introduced interior stain options. Stain colors are Wheat, Honey, Leather, Hazelnut, Cabernet and Espresso.<br>12/16/2013: Added SN PVD Butt Hinge option.  |
| 2014     | Ultimate Wood Inswing French Door Arch Top | 2/24/2014: Introduced two Pearlescent clad colors – Bright Silver and Copper. Discontinued two clad colors – Sherwood Green and Cobalt Blue. Removed screen information and added new chapter for screen to manual.<br>10/27/2014: Introduced Ogee as the new default for interior profiles.   |
| 2016     | Ultimate Wood Inswing French Door Arch Top | 06/27/2016 Introduced Matte Black as a standard hardware color<br>10/31/2016: Introduced 9-0 Call No heights. Obsolescence of the wood species Cedro Macho for all products.   |



**Head Jamb and Sill**

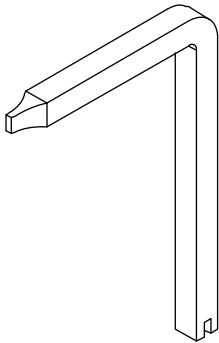
- |   |  |
|---|--|
| 1. Head Jamb Brick Mould Casing               | 17. Side Jamb Brick Mould Casing               |
| 2. Head Jamb Parting Stop, W6554              | 18. Side Jamb                                  |
| 3. Head Jamb                                  | 19. Adjustable Hinge                           |
| 4. Head Jamb Weather Strip, V796              | 20. Stile                                      |
| 5. Head Jamb Parting Stop Weather Strip, V796 | 21. Interior Handle Assembly                   |
| 6. Top Rail                                   | 22. Exterior Handle Assembly                   |
| 7. Insulated Glass                            | 23. Active Panel Locking Stile                 |
| 8. Top Rail Glazing Bead                      | 24. Inactive Panel Locking Stile               |
| 9. Glazing Bead Cap                           | 25. Astragal Weather Strip, V796               |
| 10. Vinyl Glazing Bead                        | 26. Stile Weather Strip, V780                  |
| 11. Bottom Rail                               | 27. Astragal, W1455                            |
| 12. Panel Drip, V940                          | 28. Astragal Cover, W7554                      |
| 13. Hydro Optimizer, A1251                    | 29. Side Jamb Weather Strip, V796              |
| 14. Sill                                      | 30. Side Jamb Parting Stop Weather Strip, V796 |
| 15. Sill Weather Strip, V794                  | 31. Side Jamb Parting Stop, W6535              |
| 16. Sill Liner, W2528                         |  |



**Jamb  
XX L**

Construction Handle

| PN       |
|----------|
| 10830451 |



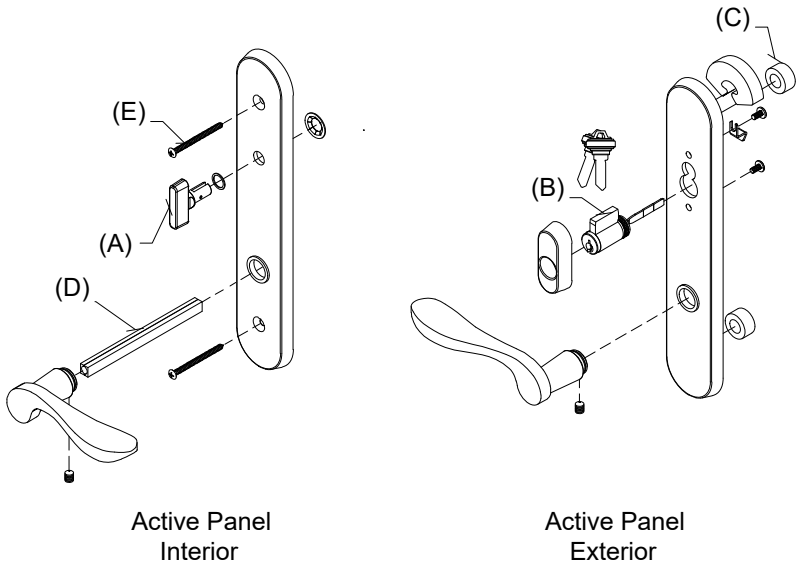
# Handle Assembly, Active, Keyed

Mortise Lock and Multi-Point Lock Systems (Schlage “C” Keyway)

## Includes:

- 1 - Interior lever with spindle, escutcheon plate and hardware
- 1 - Exterior lever with escutcheon plate and hardware
- 1 - Thumb turn with hardware (A)
- 1 - Keyed cylinder with housing and hardware, includes 2 keys (B)
- 1 - Exterior escutcheon plate gasket
- 2 - Lug Seal (C)
- 1 - Two piece spindle, 4.35” w/1 3/4” panel (D)
- 2 - #10–32 x 2 1/8” Phillips oval head machine screws (w/1 3/4” Panel) (E)

| Handle Assembly - 1 3/4 Panel |          |
|-------------------------------|----------|
| Color                         | PN       |
| Satin Taupe                   | 10830304 |
| Antique Brass                 | 10830306 |
| White                         | 10830310 |
| Satin Chrome                  | 10830302 |
| Oil Rubbed Bronze             | 10148111 |
| Oil Rubbed Bronze PVD         | 10830300 |
| Brass PVD                     | 10830324 |
| Satin Nickel PVD              | 10830421 |
| Dark Bronze                   | 10830330 |
| Polished Chrome               | 10830308 |
| Matte Black                   | 10830450 |



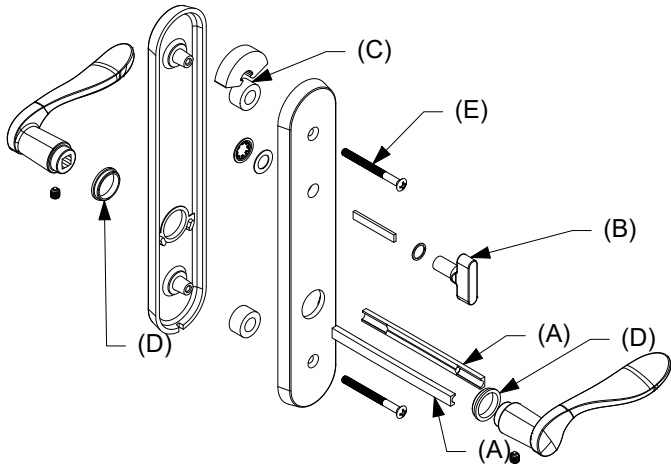
# Handle Assembly, Active, Non-Keyed

Mortise Lock and Multi-Point Lock Systems (Schlage “C” Keyway)

## Includes:

- 2 - Levers
- 2 - Lever bushings (D)
- 2 - Lug seals (C)
- 1 - Interior escutcheon
- 1 - Exterior escutcheon
- 1 - Thumb turn with actuator/tail piece (B)
- 1 - Two piece spindle, 4.35” w/1 3/4” panel (A)
- 2 - #10–32 x 2 1/8” Phillips oval head machine screws (w/1 3/4” Panel) (E)
- 2 - Set screws
- 1 - Allen wrench
- 1 - Installation instruction

| Handle Assembly - 1 3/4 Panel |          |
|-------------------------------|----------|
| Color                         | PN       |
| Satin Taupe                   | 10830514 |
| Antique Brass                 | 10830520 |
| White                         | 10830516 |
| Satin Chrome                  | 10830513 |
| Oil Rubbed Bronze             | 10830512 |
| Oil Rubbed Bronze PVD         | 10830510 |
| Brass PVD                     | 10830517 |
| Satin Nickel PVD              | 10830521 |
| Dark Bronze                   | 10830518 |
| Polished Chrome               | 10830515 |
| Matte Black                   | 10830519 |

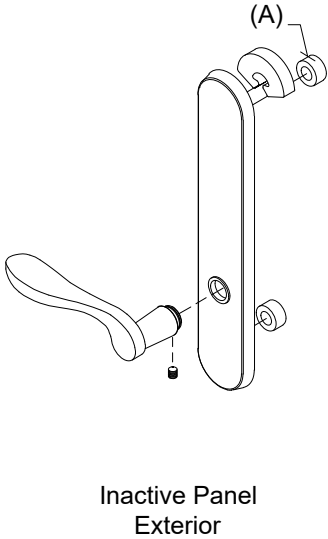
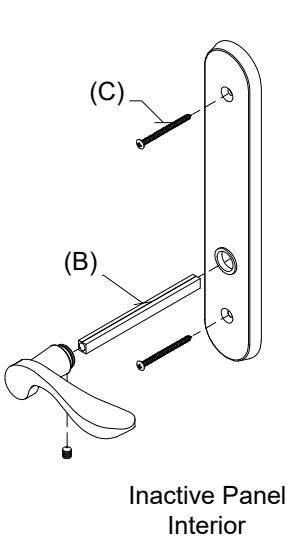


# Handle Assembly, Inactive/Dummy

## Includes:

- 1 - Interior lever with spindle, escutcheon plate and hardware
- 1 - Exterior lever with escutcheon plate and hardware
- 1 - Exterior escutcheon plate gasket
- 1 - Exterior escutcheon plate
- 2 - Lug seals (A)
- 1 - Two piece spindle, 4.35" (w/1 3/4" panel) (B)
- 2 - #10-32 x 2 1/8" Phillips oval head machine screws (w/1 3/4" Panel) (C)

| Handle Assembly - 1 3/4 Panel |          |
|-------------------------------|----------|
| Color                         | PN       |
| Satin Taupe                   | 10830318 |
| Antique Brass                 | 10830312 |
| White                         | 10830316 |
| Satin Chrome                  | 10830320 |
| Oil Rubbed Bronze             | 10148154 |
| Oil Rubbed Bronze PVD         | 10830322 |
| Brass PVD                     | 10830326 |
| Satin Nickel PVD              | 10830422 |
| Dark Bronze                   | 10830328 |
| Polished Chrome               | 10830314 |
| Matte Black                   | 10148157 |



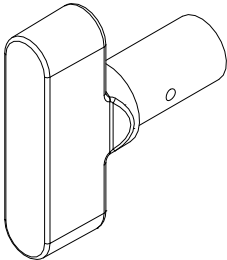
## Thumb Turn, Traditional

For Keyed Handle

**Includes:**

- Thumb Turn Washer
- Thumb Turn Push Nut

| No Tail Piece/Actuator<br>(for keyed handle) |          |
|--|----------|
| Color  | PN       |
| Antique Brass                                | 10148483 |
| Satin Chrome                                 | 10148482 |
| Oil Rubbed Bronze                            | 10148481 |
| Oil Rubbed Bronze PVD                        | 10148485 |
| Polished Chrome                              | 10148488 |
| Brass PVD                                    | 10148484 |
| Satin Nickel PVD                             | 10148487 |
| Satin Taupe                                  | 10148486 |
| Dark Bronze                                  | 10148479 |
| White  | 10148489 |
| Matte Black                                  | 10148480 |



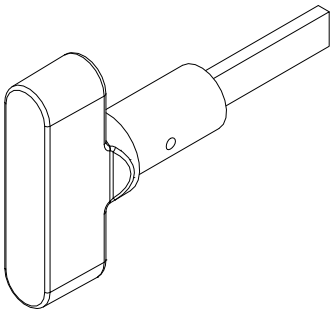
## Thumb Turn, Traditional with Actuator/Tail Piece

For Non-Keyed Handle

**Includes:**

- Actuator/Tailpiece
- Thumb Turn Washer
- Thumb Turn Push Nut

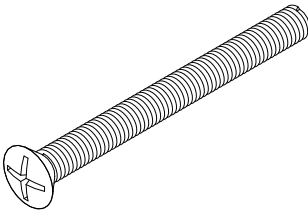
| With Tail Piece/Actuator<br>(for non-keyed handle) |          |
|--|----------|
| Color  | PN       |
| Antique Brass                                      | 10148495 |
| Satin Chrome                                       | 10148494 |
| Oil Rubbed Bronze                                  | 10148493 |
| Oil Rubbed Bronze PVD                              | 10148497 |
| Polished Chrome                                    | 10148500 |
| Brass PVD  | 10148496 |
| Satin Nickel PVD                                   | 10148499 |
| Satin Taupe  | 10148498 |
| Dark Bronze  | 10148491 |
| White  | 10148501 |
| Matte Black  | 10148492 |





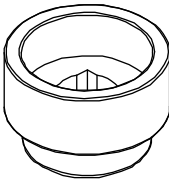
# #10–32 x 2 1/8” Phillips Oval Head Machine Screw

| Color                 | PN       |
|-----------------------|----------|
| Satin Taupe           | 11800616 |
| Antique Brass         | 00143038 |
| White                 | 00143036 |
| Satin Chrome          | 10840031 |
| Oil Rubbed Bronze     | 10840032 |
| Oil Rubbed Bronze PVD | 11800160 |
| Brass PVD             | 11800615 |
| Satin Nickel PVD      | 11800190 |
| Dark Bronze           | 11800654 |
| Matte Black           | 11800181 |



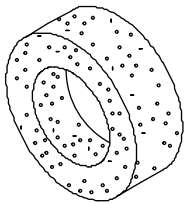
# Handle Extensions

| 3/4” Handle Extension<br>(Requires 3/4” Spindle Extension) |          | 3/8” Handle Extension<br>(Requires 3/8” Spindle Extension) |          |
|--|----------|--|----------|
| Color  | PN       | Color  | PN       |
| Satin Taupe  | 10833060 | Satin Taupe  | 10833049 |
| Antique Brass  | 10833057 | Antique Brass  | 10833046 |
| White  | 10833063 | White  | 10833052 |
| Satin Chrome   | 10833056 | Satin Chrome   | 10833045 |
| Oil Rubbed Bronze  | 10833038 | Oil Rubbed Bronze  | 10833044 |
| Oil Rubbed Bronze PVD                                      | 10833059 | Oil Rubbed Bronze PVD                                      | 10833048 |
| Brass PVD  | 10833058 | Brass PVD  | 10833047 |
| Satin Nickel PVD   | 10830139 | Satin Nickel PVD   | 10833050 |
| Dark Bronze  | 10833054 | Dark Bronze  | 10833042 |
| Polished Chrome  | 10833062 | Polished Chrome  | 10833051 |
| Matte Black  | 10833055 | Matte Black  | 10833043 |



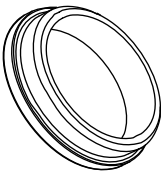
## Lug Seal

| PN       |
|----------|
| 00142046 |



## Lever Bushing

| Color   | PN       |
|---------|----------|
| Clear   | 02062201 |
| Gray    | 10148448 |
| Gold    | 10148447 |
| Natural | 02062202 |
| Black   | 10148020 |



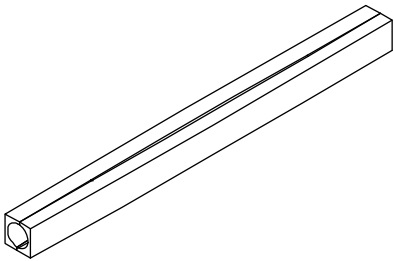
## Spindle (Ashland and Truth)

### Includes:

- 1 - 2 piece spindle
- 2 - Set screws

NOTE: The 5 1/16" spindle is primarily used for 1 3/4" doors with the 3/4" lever extension.

| Size    | PN       |
|---------|----------|
| 4 3/8"  | 18900392 |
| 5 1/16" | 18900393 |

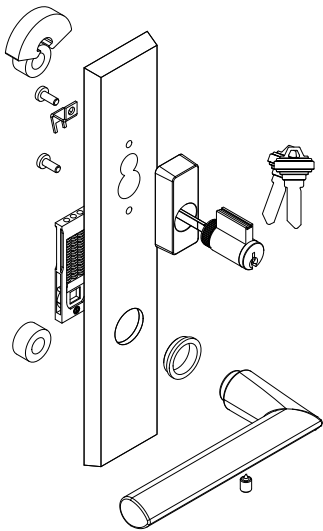


## Contemporary Handle, Exterior, Active, Keyed

**Includes:**

- 1 - Handle
- 1 - Exterior escutcheon with bushing
- 1 - Keyed cylinder, includes 2 keys
- 2 - Lug seals
- 1 - Spring cartridge
- 1 - Set screw
- 1 - Installation instruction
- 1 - Hex wrench

| LH Inswing Panel uses LH PN<br>RH Inswing Panel uses RH PN |          |          |
|--|----------|----------|
| Color  | LH PN    | RH PN    |
| Matte Black  | 11870120 | 11870112 |
| Satin Nickel PVD   | 11870122 | 11870114 |
| Oil Rubbed Bronze PVD                                      | 11870124 | 11870116 |
| Dark Bronze  | 11870126 | 11870118 |



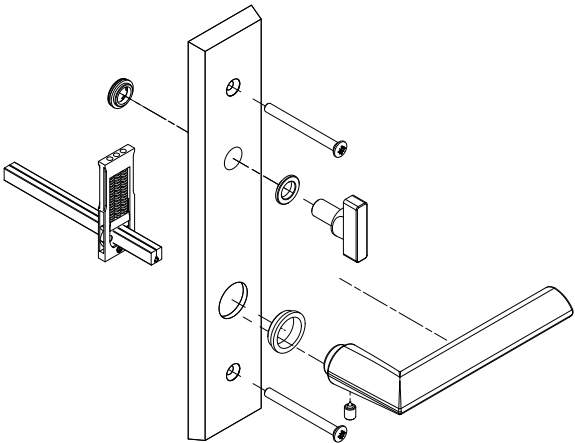
LH shown

## Contemporary Handle, Interior, Active, Keyed

**Includes:**

- 1 - Handle
- 1 - Interior escutcheon with bushings
- 1 - Spring cartridge
- 1 - Thumb turn
- 2 - Machine screws, 2 1/4" Doors
- 2 - Machine screws, 1 3/4" Doors
- 1 - Split spindle, 2 1/4" Doors
- 1 - Split spindle, 1 3/4" Doors
- 1 - Set screw
- 1 - Installation instruction
- 1 - Hex wrench

| LH Inswing Panel uses RH PN<br>RH Inswing Panel uses LH PN |          |          |
|--|----------|----------|
| Color  | LH PN    | RH PN    |
| Matte Black  | 11870104 | 11870097 |
| Satin Nickel PVD   | 11870106 | 11870098 |
| Oil Rubbed Bronze PVD                                      | 11870108 | 11870100 |
| Dark Bronze  | 11870110 | 11870102 |



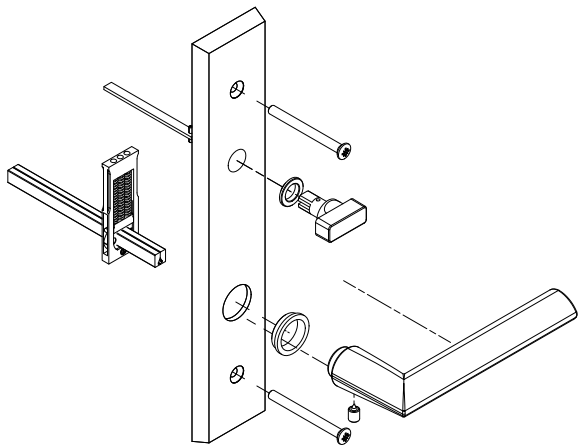
RH shown

# Contemporary Handle, Interior, Active, Non-Keyed

## Includes:

- 1 - Handle
- 1 - Interior escutcheon with bushings
- 1 - Spring cartridge
- 1 - Thumb turn
- 2 - Machine screws, 2 1/4" Doors
- 2 - Machine screws, 1 3/4" Doors
- 1 - Split spindle, 2 1/4" Doors
- 1 - Split spindle, 1 3/4" Doors
- 1 - Set screw
- 1 - Installation instruction
- 1 - Hex wrench

| LH Inswing Panel uses RH PN<br>RH Inswing Panel uses LH PN |          |          |
|--|----------|----------|
| Color  | LH PN    | RH PN    |
| Matte Black  | 11870136 | 11870128 |
| Satin Nickel PVD   | 11870138 | 11870130 |
| Oil Rubbed Bronze PVD                                      | 11870139 | 11870132 |
| Dark Bronze  | 11870143 | 11870133 |



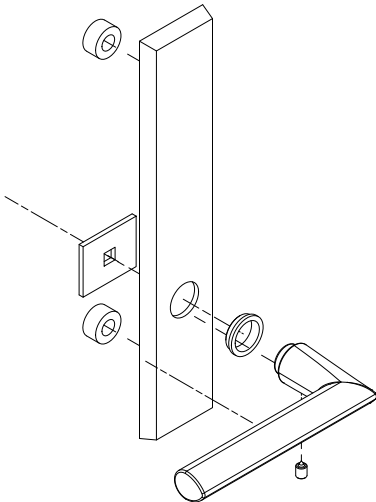
RH shown

# Contemporary Handle, Exterior, Non-Keyed, Inactive/Dummy

## Includes:

- 1 - Handle
- 1 - Exterior escutcheon with bushings
- 2 - Lug seals
- 1 - Fixing plate
- 1 - Set screw
- 1 - Installation instruction
- 1 - Hex wrench

| LH Inswing Panel uses LH PN<br>RH Inswing Panel uses RH PN |          |          |
|--|----------|----------|
| Color  | LH PN    | RH PN    |
| Matte Black  | 11870153 | 11870145 |
| Satin Nickel PVD   | 11870154 | 11870146 |
| Oil Rubbed Bronze PVD                                      | 11870156 | 11870148 |
| Dark Bronze  | 11870158 | 11870149 |



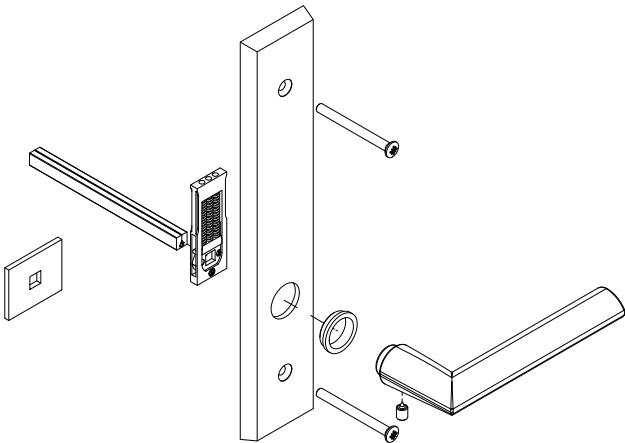
LH shown

# Contemporary Handle, Interior, Inactive/Dummy

## Includes:

- 1 - Handle
- 1 - Escutcheon with bushing
- 1 - Dummy fixing plate
- 1 - Spring cartridge
- 2 - Machine screws, 2 1/4" Doors
- 2 - Machine screws, 1 3/4" Doors
- 1 - Split spindle, 2 1/4" Doors
- 1 - Split spindle, 1 3/4" Doors
- 1 - Set screw
- 1 - Installation instruction
- 1 - Hex wrench

| LH Inswing Panel uses RH PN<br>RH Inswing Panel uses LH PN |          |          |
|--|----------|----------|
| Color  | LH PN    | RH PN    |
| Matte Black  | 11870169 | 11870160 |
| Satin Nickel PVD   | 11870171 | 11870162 |
| Oil Rubbed Bronze PVD                                      | 11870172 | 11870164 |
| Dark Bronze  | 11870174 | 11870166 |



RH shown

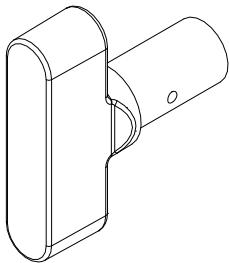
## Thumb Turn, Contemporary

For Keyed Handle

**Includes:**

- Thumb Turn Washer
- Thumb Turn Push Nut

| No Tail Piece/Actuator<br>(for keyed handle) |          |
|--|----------|
| Color  | PN       |
| Oil Rubbed Bronze PVD                        | 10148485 |
| Satin Nickel PVD                             | 10148487 |
| Dark Bronze                                  | 10148479 |
| Matte Black                                  | 10148480 |



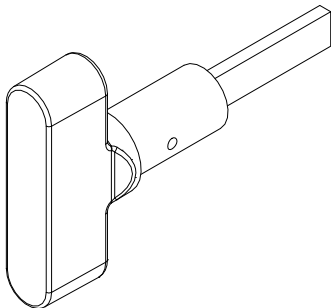
## Thumb Turn, Contemporary with Actuator/Tail Piece

For Non-Keyed Handle

**Includes:**

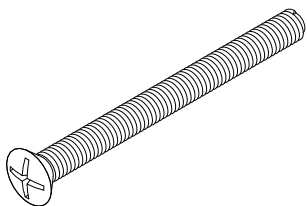
- Actuator/Tailpiece
- Thumb Turn Washer
- Thumb Turn Push Nut

| With Tail Piece/Actuator<br>(for non-keyed handle) |          |
|--|----------|
| Color  | PN       |
| Oil Rubbed Bronze PVD                              | 10148497 |
| Satin Nickel PVD                                   | 10148499 |
| Dark Bronze  | 10148491 |
| Matte Black  | 10148492 |



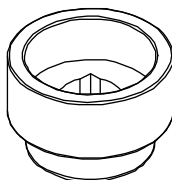
## M5 x 55mm Oval Head Machine Screw

| Color                 | PN       |
|-----------------------|----------|
| Satin Taupe           | 10148400 |
| Oil Rubbed Bronze PVD | 10148402 |
| Satin Nickel PVD      | 10148403 |
| Dark Bronze           | 10148404 |
| Matte Black           | 10148440 |



## Handle Extension

| 3/4" Handle Extension<br>(Requires 3/4" Spindle Extension) |          |
|--|----------|
| Color  | PN       |
| Satin Taupe  | 10148419 |
| Oil Rubbed Bronze PVD                                      | 10148421 |
| Satin Nickel PVD   | 10148422 |
| Dark Bronze  | 10148420 |
| Matte Black  | 10148445 |

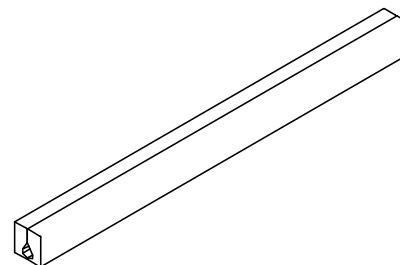


## Spindle (Hoppe)

### Includes:

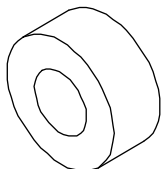
- 1 - 2 piece spindle
- 2 - Set screws

| Size   | PN       |
|--------|----------|
| 4 3/4" | 10148414 |
| 5 1/2" | 10148415 |



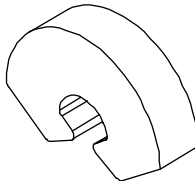
## Gasket Post, Lug Seal

| PN       |
|----------|
| 10148404 |



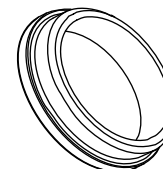
## Gasket, Top Backplate

| PN       |
|----------|
| 10148405 |



## Lever Bushing, Contemporary

| Color   | PN       |
|---------|----------|
| Gray    | 10148448 |
| Natural | 02062202 |
| Black   | 10148020 |



# Keyed Cylinder, Lock

(Schlage “C” Keyway)  
For service replacement only.

**Includes:**

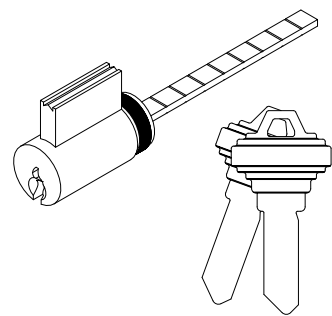
2 - Keys

NOTE: For Keyed Alike orders, use program C87P2

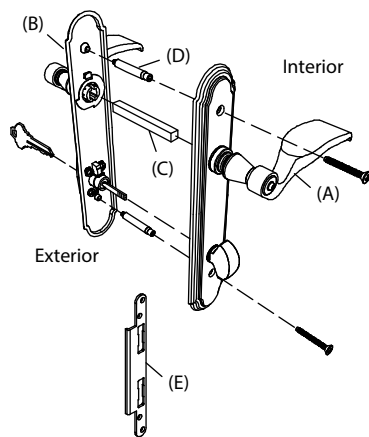
Polished Chrome, White, Satin Nickel PVD, Matte Black use  
Chrome Face

Satin Taupe, Antique Brass, Satin Chrome, Oil Rubbed  
Bronze, Oil Rubbed Bronze PVD, Brass PVD, Dark Bronze  
use Brass Face

| Color       | PN       |
|-------------|----------|
| Brass Face  | 10830211 |
| Chrome Face | 10830208 |

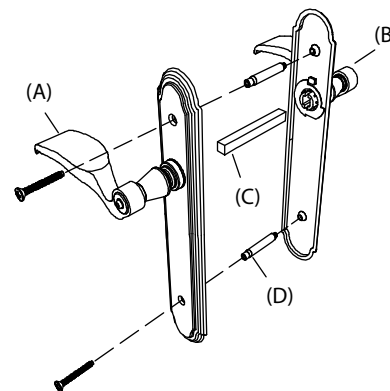






**Multi-Point Handle, Active, Solid Brass -  
Pre 2000 (Essve)**

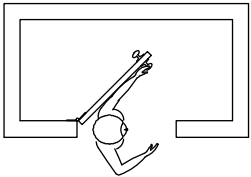
No longer available. Current handle can  
be used by turning it upside down.



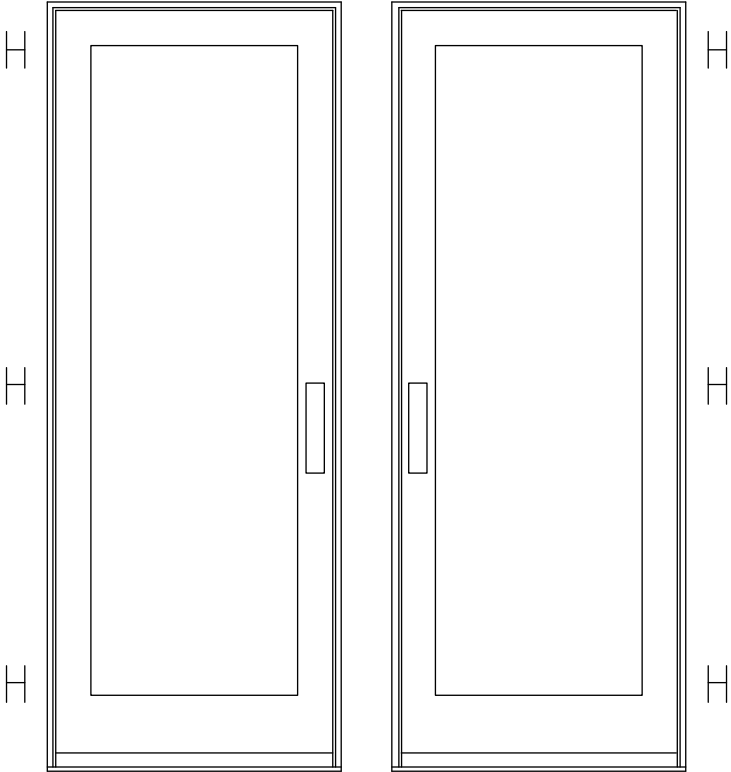
**Multi-Point Handle, Inactive, Solid Brass  
- Pre 2000 (Essve)**

No longer available. Current handle can  
be used by turning it upside down.

**NOTE: Always view units  
from the exterior for handing.  
H=Hinge location**



**LH Inswing**

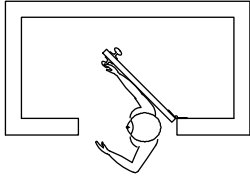


**X-LH Inswing**

This panel uses the  
left hand hinge

**X-RH Inswing**

This panel uses the  
right hand hinge



**RH Inswing**

Hinge Kit, Adjustable

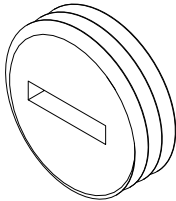
Includes:

- 1 - Adjustable hinge
- 1 - #10 x 2 1/2" Phillips flat head wood screws (jamb)
- 5 - #10 x 3/4" Phillips flat head wood screws (jamb, stationary stile)
- 4 - #8 x 1 1/2" Phillips flat head wood screws (panel)

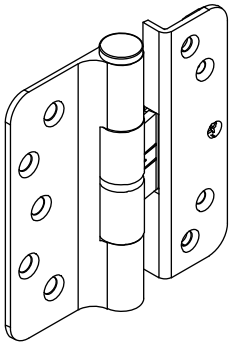
NOTE: Hinge part number includes the color matched screws, If you need to order the screws separately, they are listed below.

Adjustment Cover, Adjustable Hinge

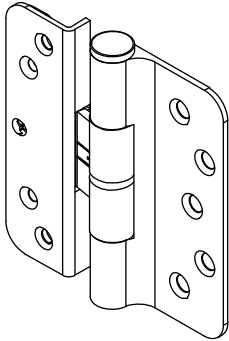
| PN       |
|----------|
| 11844039 |



| Adjustable Hinge Package - Color and Part Number |          |          | Matching Screw Color |
|--|----------|----------|----------------------|
| Hinge Color                                      | LH PN    | RH PN    |                      |
| Satin Taupe (TP)                                 | 02101216 | 02101227 | TP                   |
| Goldtone (GT)                                    | 02101213 | 02101224 | GT                   |
| Silver Frost (SF)                                | 02101218 | 02101229 | Stainless Steel      |
| Dark Bronze (DKBZ)                               | 02101217 | 02101228 | DKBZ                 |
| Antique Brass (AB)                               | 02101210 | 02101221 | DKBZ                 |
| White (WH)                                       | 02101214 | 02101225 | WH                   |
| Satin Chrome (SC)                                | 02101212 | 02101223 | Stainless Steel      |
| Oil Rubbed Bronze (ORBZ)                         | 02101219 | 02101230 | DKBZ                 |
| Oil Rubbed Bronze PVD (ORBZ)                     | 02101211 | 02101222 | DKBZ                 |
| Brass PVD (BS)                                   | 02101215 | 02101226 | BS PVD               |
| Satin Nickel (SN) PVD                            | 02101220 | 02101231 | Stainless Steel      |
| Polished Chrome (PC)                             | 02101234 | 02101235 | Stainless Steel      |
| Matte Black (MBK)                                | 02101236 | 02101237 | MBK                  |



LH Hinge



RH Hinge

| Individual Screw Description   | Color and Part Number |          |          |          |          |                 |          |          |
|--|-----------------------|----------|----------|----------|----------|-----------------|----------|----------|
|  | TP                    | GT       | WH       | DKBZ     | BS PVD   | Stainless Steel | Chrome   | MBK      |
| #8 x 1 1/2" Phillips flat head wood screws (panel). 4 - per hinge.   | 11865177              | 11865172 | 11865173 | 02058013 | 11865176 | 11865175        |          | 11865178 |
| #10 x 3/4" Phillips flat head wood screws (jamb) (stationary stile). 5 -per hinge.   | 11800674              | 11800670 | 11800671 | 11800669 | 11800673 |                 | 11800672 | 11800677 |
| #10 x 2 1/2" Phillips flat head wood screws (jamb). 1 - per hinge.   |                       |          |          |          |          |                 |          |          |
| NOTE: Part numbers for these screws are sold in packages of 4 screws and includes 1 - 5/32" Allen wrench. (Long Hinge Screw Package) | 11800653              | 11800632 | 11800637 | 11800644 | 10148185 | 11800639        |          | 11800696 |

# 4" Butt Hinge

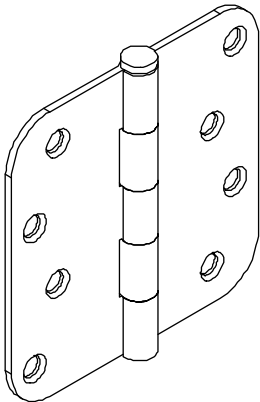
NRP=Non Removable Pin

## Includes:

- 1 - 4" Hinge
- 7 - #9 x 1" Phillips flat head wood screws
- 1 - #10 x 2 1/2" Phillips flat head wood screw (frame)

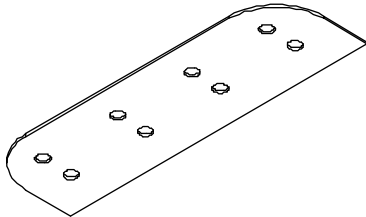
| Hinge Color      | PN       |
|------------------|----------|
| Brass            | 02101140 |
| Satin Nickel PVD | 02100599 |
| Stainless Steel  | 11809005 |

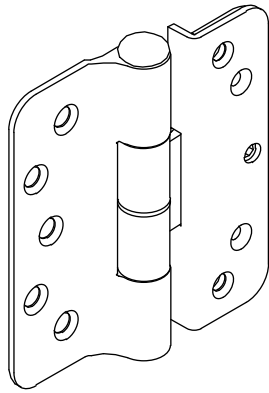
| Screw Color         | PN       |
|---------------------|----------|
| #9 x 1" BS          | 11213824 |
| #10 x 2 1/2" BS PVD | 11800679 |



# 4" Butt Hinge Shim

| PN       |
|----------|
| 10500222 |

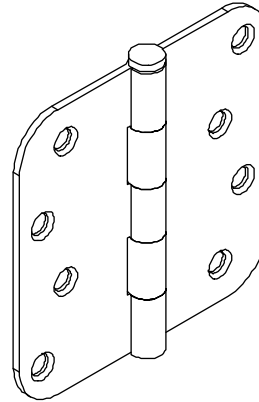




#### Hinge, Adjustable, Pre 2012

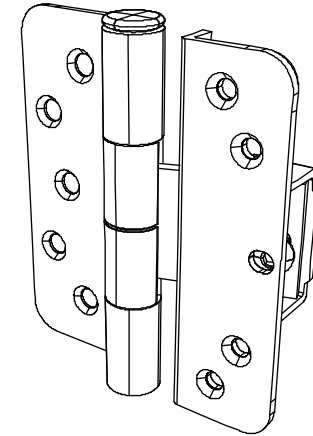
No longer available.

NOTE: The current adjustable hinge kit may be used. If using the current hinge, all hinges on the panel must be changed.



#### Butt Hinge, Inswing Doors

No longer available.



#### Hinge, Adjustable, 2000-2005

No longer available.

NOTE: The current adjustable hinge kit may be used. If using the current hinge, all hinges on the panel must be changed.

| Screw Description  |                 |          |
|--|-----------------|----------|
| Available fasteners: #10 x 1" Phillips flat head wood screws. Quantity of 5 needed per hinge |                 |          |
| Hinge Color  | Screw Color     | PN       |
| Satin Taupe  | Satin Taupe     | 05580145 |
| Goldtone   | Goldtone        | 11800606 |
| Satin Frost  | Stainless Steel | 11800605 |
| Dark Bronze  | Dark Bronze     | 02050526 |
| Antique Brass  | Dark Bronze     | 02050526 |
| White  | White           | 11800603 |
| Satin Chrome   | Stainless Steel | 11800605 |
| Oil Rubbed Bronze  | Dark Bronze     | 02050526 |
| Oil Rubbed Bronze PVD  | Dark Bronze     | 02050526 |
| Brass PVD  | Brass PVD       | 11800600 |
| Satin Nickel PVD   | Stainless Steel | 11800605 |
| Polished Chrome  | Stainless Steel | 11800605 |

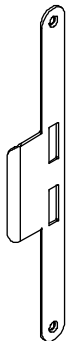
## Strike Plate, Jamb Mortise Lock or Multi-Point Lock

Std on 1 panel operator

### Includes:

- 1 - Jamb strike plate
- 2 - #8 x 1" Brass Phillips flat head wood screws\*

| Color                 | PN       |
|-----------------------|----------|
| Stainless Steel       | 05700300 |
| Antique Brass         | 05700301 |
| Oil Rubbed Bronze PVD | 05700302 |
| Brass PVD             | 10148177 |



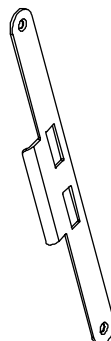
## Strike Plate, Inactive Panel Mortise Lock or Multi-Point Lock

Std on 2 panel operator

### Includes:

- 1 - Jamb strike plate
- 2 - #8 x 1" Brass Phillips flat head wood screws\*

| Color                 | PN       |
|-----------------------|----------|
| Stainless Steel       | 05700303 |
| Antique Brass         | 05700304 |
| Oil Rubbed Bronze PVD | 05700305 |
| Brass PVD             | 10148178 |

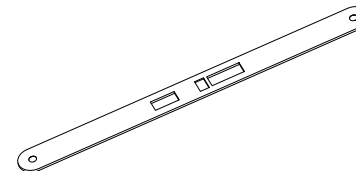


## Cover Plate Active Mortise Lock or Multi-Point Lock

### Includes:

- 1 - Cover plate
- 2 - #8 x 1" Brass Phillips flat head wood screws\*

| Color                 | PN       |
|-----------------------|----------|
| Stainless Steel       | 05700306 |
| Antique Brass         | 05700307 |
| Oil Rubbed Bronze PVD | 05700308 |
| Brass PVD             | 10148179 |



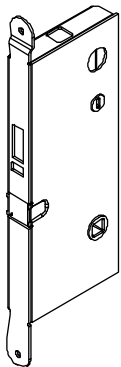
**\*Stainless Steel - 11800645, Dark Bronze - 11800652, Brass PVD - 11800536**

Note: Dark Bronze screws are used with Antique Brass and Oil Rubbed Bronze PVD

## Mortise Lock, Inactive Panel Multi-Point Lock

(head/foot shoot bolts)

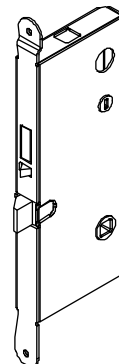
| PN       |
|----------|
| 05700131 |



## Mortise Lock, Active Multi-Point Lock

(latch, dead bolt and head/foot shoot bolts)

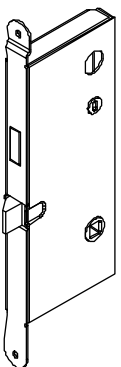
| PN       |
|----------|
| 05700130 |



## Mortise Lock, Active Single Point

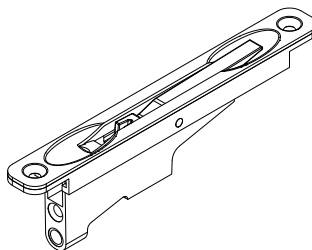
(Latch and dead bolt only)

| PN       |
|----------|
| 05700129 |



## Head or Foot Flush Bolt, Inactive Panel

| Color | PN       |
|-------|----------|
| Black | 11101780 |

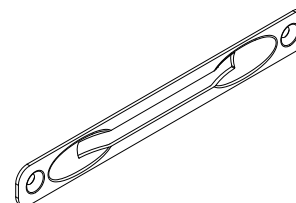


## Cover Plate for Flush Bolt

### Includes:

- 1 - Cover plate
- 2 - #8 x 1" screws

| Color    | PN       |
|----------|----------|
| Aluminum | 11860402 |



## Locking Rod Assembly, Top for Multi-Point

Solid stainless steel rod with 1/4" - 20 threads

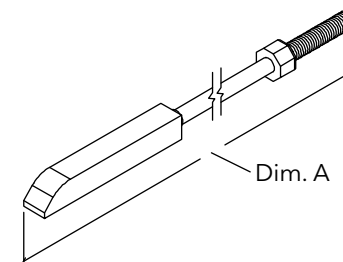
### Usage dates:

3/02 to present (Amerock) 8/0 height see history

5/10/90 to present (Amerock) 6/5, 6/8, & 7/0 height

NOTE: For special height give dimension A

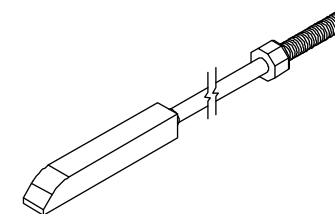
| Height    | Top Locking Rod Length | Color           | PN       |
|-----------|------------------------|-----------------|----------|
| CN 6/8 ht | 37 15/16"              | Stainless Steel | 05700176 |
| CN 7/0 ht | 41 15/16"              |                 | 05700177 |
| CN 8/0 ht | 51 7/16"               |                 | 05700179 |
| CN 9/0 ht | 63 7/16"               |                 | 05700191 |



## Locking Rod Assembly, Bottom for Multi-Point Lock

Solid stainless steel rod with 1/4" - 20 threads

| Height    | Btm Locking Rod Length | Color           | PN       |
|-----------|------------------------|-----------------|----------|
| CN 6/8 ht | 34 9/32"               | Stainless Steel | 05700170 |
| CN 7/0 ht |                        |                 |          |
| CN 8/0 ht |                        |                 |          |
| CN 9/0 ht |                        |                 |          |

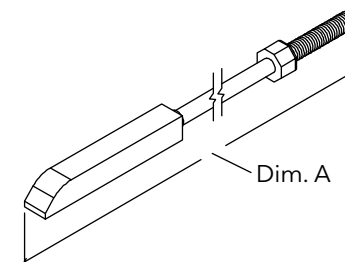


## Inactive Panel Locking Rod Assembly, Top or Bottom Flush Bolt

### Includes:

1 - Locking rod with end bolt

| Height      | Top Locking Rod Length | Color           | PN       |
|-------------|------------------------|-----------------|----------|
| CN 6/8 ht   | 11"                    | Stainless Steel | 05700180 |
| CN 7/0 ht   | 11"                    |                 | 05700180 |
| CN 8/0 ht   | 27"                    |                 | 05700185 |
| CN 9/0 ht   | 34 9/32"               |                 | 05700170 |
| Height      | Btm Locking Rod Length |                 | PN       |
| All heights | 11 1/2"                |                 | 10815178 |





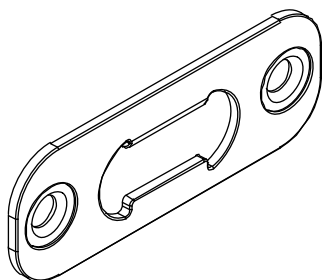
## Strike Plate Kit, Head Jamb/Sill

### Includes:

- 1 - Strike plate
- 2 - Well nuts
- 2 - #8-32 x 1/2" Phillips flat head Stainless Steel screws

NOTE: Well Nuts may not be used in all applications.

| Color           | PN       |
|-----------------|----------|
| Stainless Steel | 11860401 |



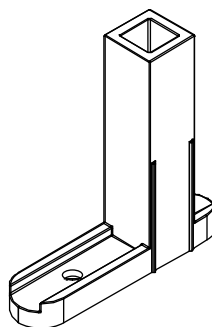
## Shoot Bolt Guide

Active Panels with multi-point

### Includes:

- 1 - Shoot Bolt Guide
- 1 - #8 x 1 1/2" Phillips pan head wood screw

| PN       |
|----------|
| 10815199 |

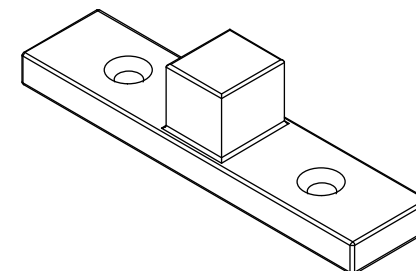


## Sill Bolt, Stationary Panel

### Includes:

- 2 - #8 x 3" Phillips flat head wood screws (11800830)

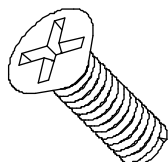
| Color         | PN       |
|---------------|----------|
| Zinc Die Cast | 11101856 |



## Fastener, Strike Plate, Sill and Head Jamb

#8-32 x 1/2" machine screws

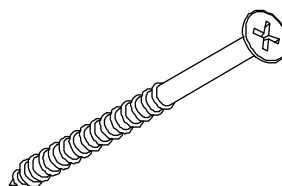
| Color           | PN       |
|-----------------|----------|
| Stainless Steel | 11800847 |



## Installation Screw Package; Strike Plate(s) at head jamb or locking jamb

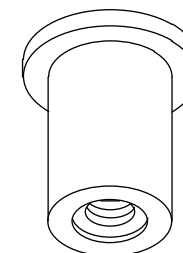
#8 x 2 1/2" flat head wood screw

| Qty          | Color           | PN       |
|--------------|-----------------|----------|
| Package of 2 | Stainless Steel | 11882349 |
|              | Brass PVD       | 11882343 |
|              | Antique Brass   | 11882347 |



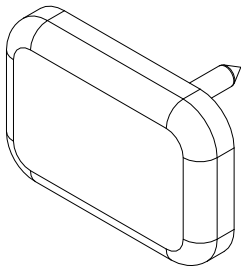
## Well-Nut Threaded Insert

| Color | PN       |
|-------|----------|
| Black | 10830008 |



# Head Jamb Spacer Tack, Stationary Panel

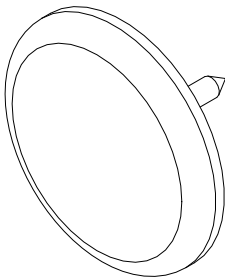
| PN       |
|----------|
| 11860424 |



# Jamb Spacer Tack, Stationary Panel

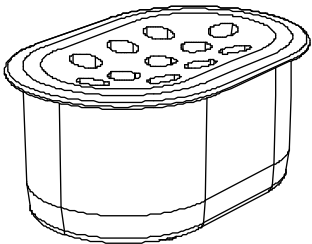
3/4" Diameter Head

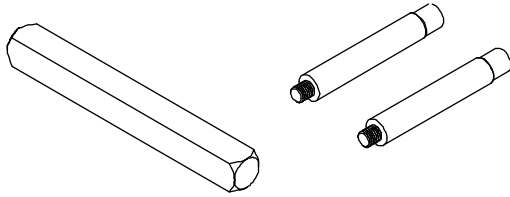
| PN       |
|----------|
| 11860423 |



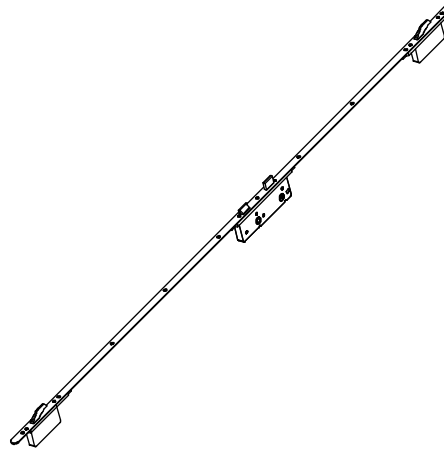
# Drain Plug, Sill

| Color  | PN       |
|--------|----------|
| Beige  | 10500253 |
| Bronze | 10500249 |

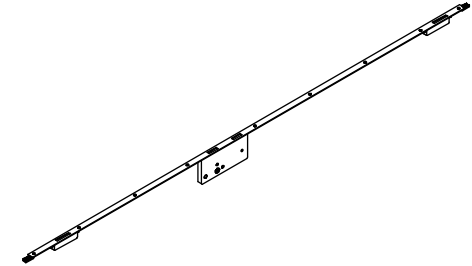




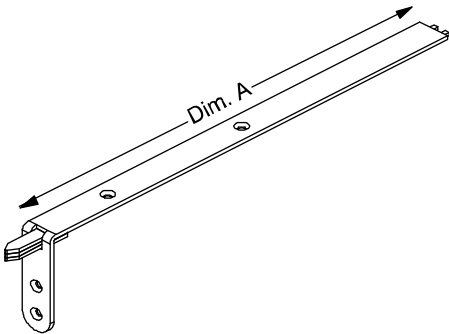
**Spindle Package for Multi-Point Handle  
(Essve) - Pre 2000**  
No Longer Available



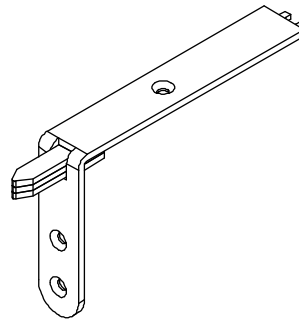
**Active Multi-Point Hardware Assembly  
(Essve) - Pre 2000**  
No Longer Available



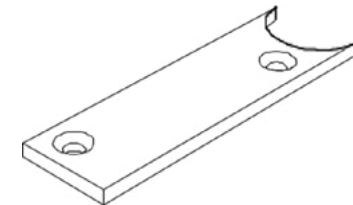
**Inactive Multi-Point Hardware Assembly  
(Essve) - Pre 2000**  
No Longer Available



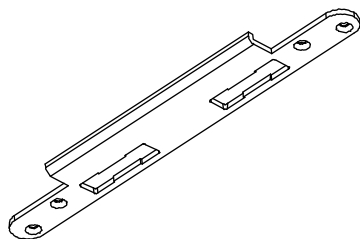
**Multi-Point Top Corner Drive (Essve)  
Pre 2000**  
No Longer Available



**Multi-Point Bottom Corner Drive (Essve)  
Pre 2000**  
No Longer Available

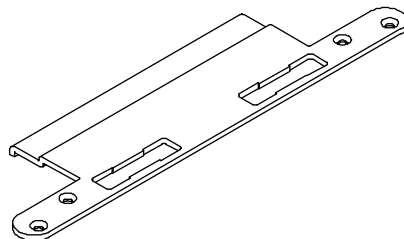


**Corner Drive Filler, Multi-Point Lock (Essve)  
Pre 2000**  
No Longer Available



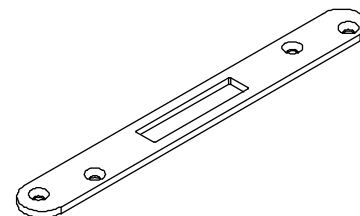
**Jamb Strike, Center, Solid Brass; Multi-Point Lock (Essve) - Pre 2000**

No longer available.



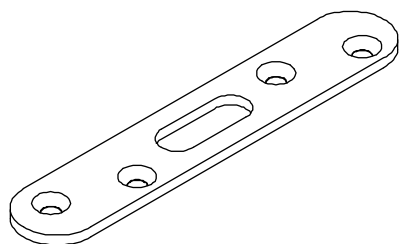
**Jamb Strike, Center, Extended, Solid Brass; Multi-Point Lock (Essve) - Pre 2000**

No longer available.



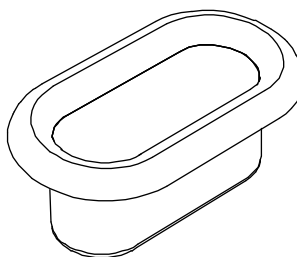
**Jamb Strike, Top or Bottom, Solid Brass; Multi-Point Lock (Essve) - Pre 2000**

No longer available.



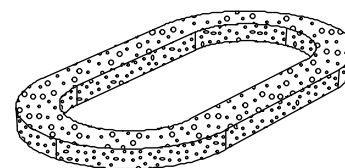
**Strike, Inactive Panel, Head Jamb; Multi-Point Lock (Essve) - Pre 2000**

No longer available.



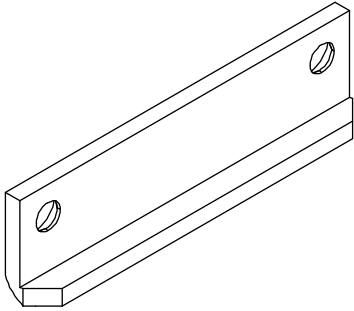
**Corner Drive Sill Receptacle, Solid Brass; Multi-Point Lock (Essve) - Pre 2000**

No longer available.

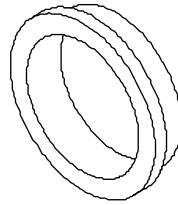


**Sill Receptacle Gasket; Multi-Point Lock**

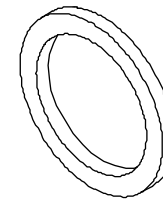
No longer available.



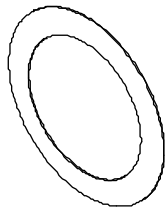
**Astragal Strike Latch; Multi-Point Lock (Essve) - Pre 2000**  
No longer available.



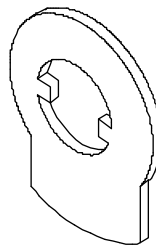
**Lever Washers Pre 2000**  
No longer available.



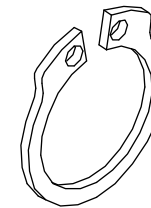
**Lever Spacers Pre 2000**  
No longer available.



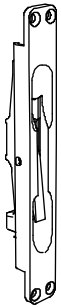
**Lever Shims Pre 2000**  
No longer available.



**Dummy Lever Cams Pre 2000**  
No longer available.

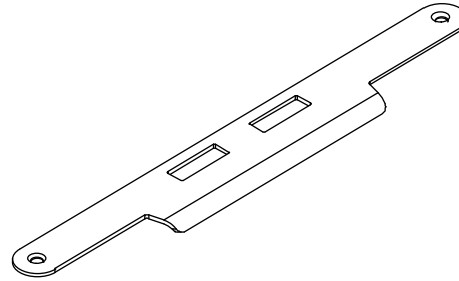


**Snap Rings Pre 2000**  
No longer available.



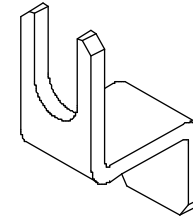
**Inactive Panel Flush Bolt - 9/25/00 - 3/02**

No longer available.



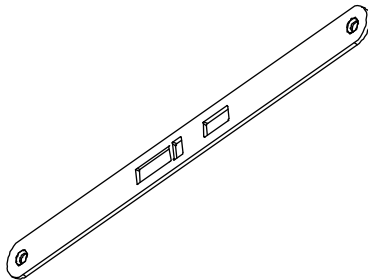
**Strike Plate, Panel - Mortise Lock or Multi-Point Lock 9/25/00 to 3/31/03 (Amerock)**

No longer available.



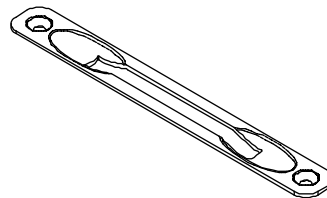
**Stop clip with screws 9/25/00 to Present**

No longer available as individual part



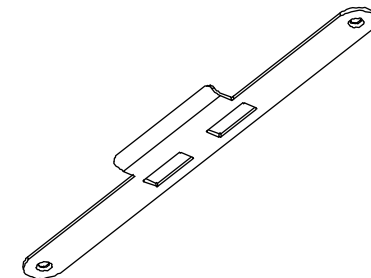
**Cover Plate, Active Panel - Mortise Lock or Multi-Point Lock 1/17/00 to 3/31/03 (Amerock)**

No longer available.



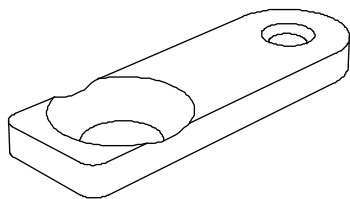
**Cover Plate for Flush Bolt**

No longer available.

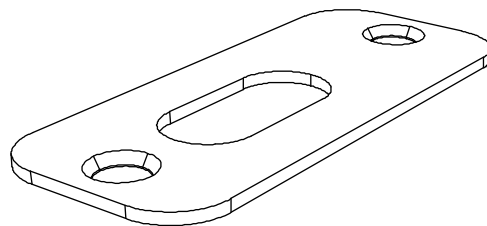


**Strike Plate, Inactive Panel - Mortise Lock or Multi-Point Lock - 9/25/00 - 3/31/03 (Amerock)**

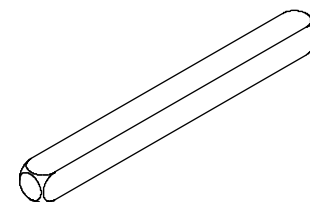
No longer available.



**Inactive Panel Backset Extension - Head or  
Foot Flush Bolt - 9/25/00 to Present**  
No longer available.



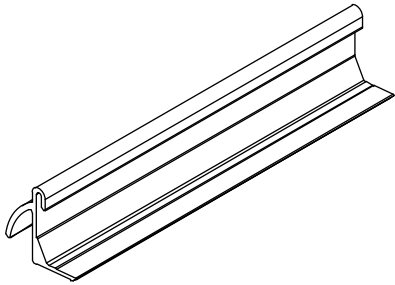
**Strike Plate, Head Jamb or Sill - 9/25/2000  
3/31/03**  
No longer available.



**Spindle - 4 3/16" - Pre 2000**  
No longer available.

**When ordering replacement parts, specify:**

1. Original order/line number;
2. profile number;
3. size (call number or rough opening);
4. length;
5. handing;
6. finish.

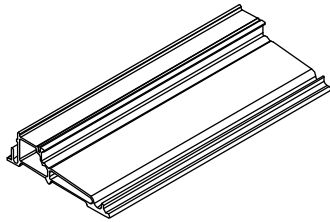


**Hydro-Optimizer, A1251**

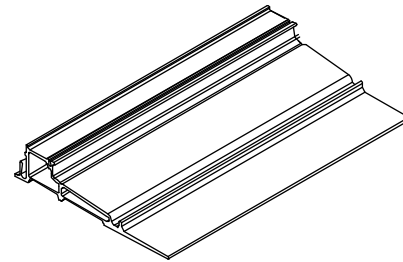


**When ordering replacement parts, specify:**

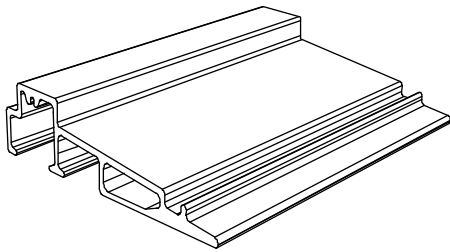
1. Original order/line number;
2. profile number;
3. size (call number or rough opening);
4. length;
5. handing/inswing or outswing;
6. finish.



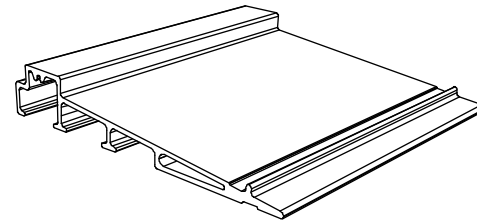
**Ultrex Sill 4 9/16 Jamb, F256**



**Ultrex Sill 6 9/16 Jambs, F257**



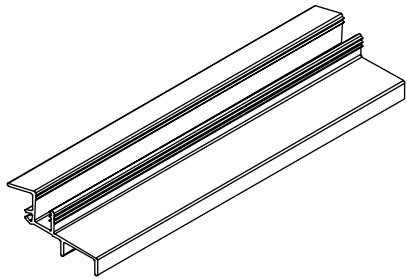
**Ultrex Sill 4 9/16 Jamb, F251**  
No longer available



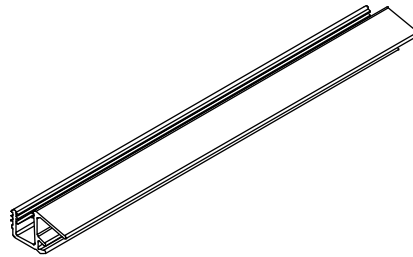
**Ultrex Sill 6 9/16 Jambs, F253**  
No longer available

## When ordering replacement parts, specify:

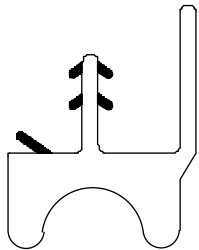
1. Original order/line number;
2. profile number;
3. rough opening;
4. handing;
  - a. on jamb parting stop specify right or left jamb (viewed from exterior)
5. length;
6. finish.



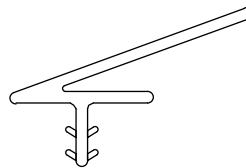
**Stationary Panel Drip/Sill Spacer, V941**



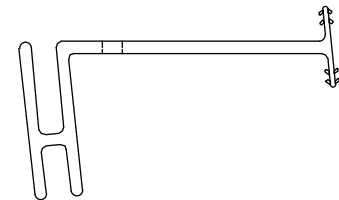
**Panel Drip, V940**



**Panel Drip, V800**



**Sash Retainer, V026**



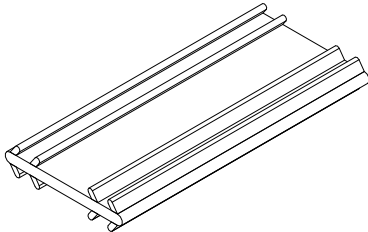
**Sill Leveling Block, V027**

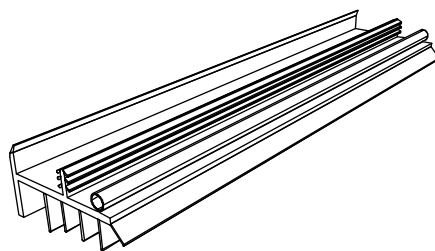
# Connecting Barb

V803

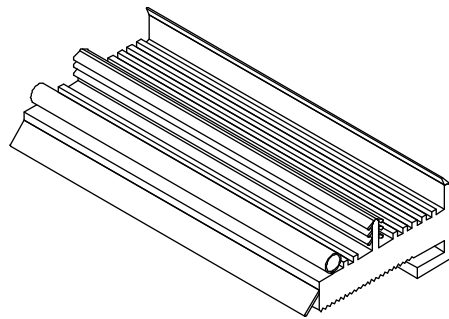
NOTE: Color may vary depending on current stock.

| Length         | PN       |
|----------------|----------|
| Specify Length | 15812999 |





**Sweep, V302**

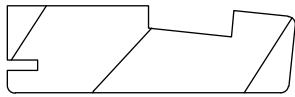


**Stationary and Sidelite Leveling Block, V199**  
No longer available

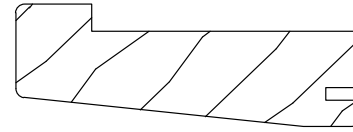
## When ordering replacement parts, specify:

1. Original order number/line number;
2. profile number;
3. rough opening;
4. handing;
  - a. on jamb parting stop specify right or left jamb (viewed from exterior)
5. length;
6. finish.

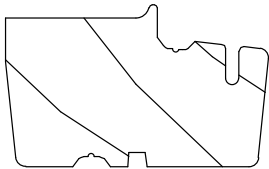
NOTE: Replacement wood parts are supplied with connecting barb (where applicable).



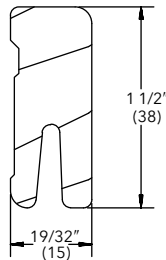
**W6535 Jamb Parting Stop**



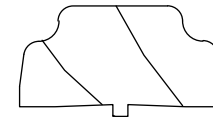
**W6554 Head Jamb Parting Stop**



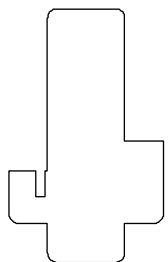
**W1455 First Mull Casing and Astragal**



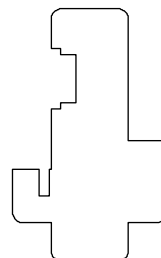
**W2528 Sill Liner (oak)**



**W7554 Astragal Cover**



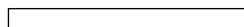
**Astragal, W7222**  
No longer available



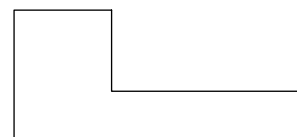
**Astragal  
(Multi-Point), W7219**  
No longer available



**Stationary Head Jamb/Jamb  
and Astragal Filler, W6040**  
No longer available



**Stationary Head Jamb/Jamb Spacer, W6220**  
No longer available



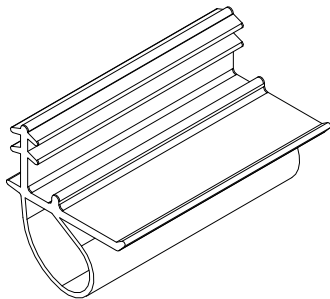
**Stationary Jamb Filler  
(Multi-panel), W7235**  
No longer available



## Inactive Panel Stile Center

V780

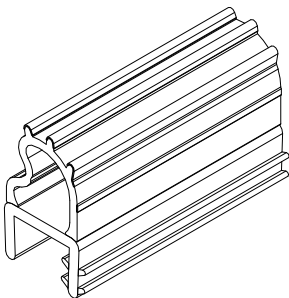
| Length | Color | PN       |
|--------|-------|----------|
| 150"   | Beige | 15174090 |
|        | Black | 15174098 |



## Flex-Bulb Weather Strip, Sill

V794

| Length   | Color | PN       |
|----------|-------|----------|
| 92 3/4"  | Beige | 15180780 |
| 164 3/4" | Beige | 15180796 |
| 164 3/4" | Black | 15180799 |

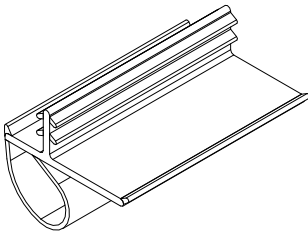


## Offset Bulb Weather Strip

V796

Parting Stop, Frame, Mull Casing, Transom and Astragal

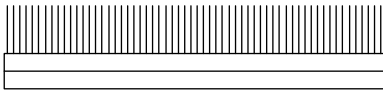
| Length     | Color | PN       |
|------------|-------|----------|
| 75 43/64"  | Beige | 15170866 |
|            | Black | 15170867 |
| 104 7/8"   | Beige | 15170090 |
|            | Black | 15170091 |
| 115 41/64" | Beige | 15170810 |
|            | Black | 15170811 |
| 189 11/16" | Beige | 15173298 |
|            | Black | 15173398 |



## Dust Block/Pile Jamb or Panel

1" x 1/8" x 3/4", adhesive backed

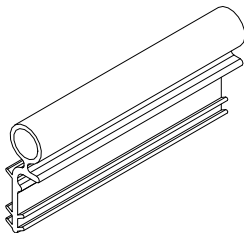
| Color | PN       |
|-------|----------|
| Gray  | 19061221 |



# Weather Strip, Stile

V020

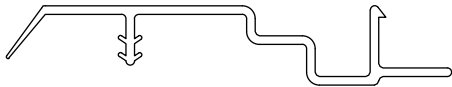
| Length   | Color | PN       |
|----------|-------|----------|
| 95 9/16" | Beige | 11197980 |

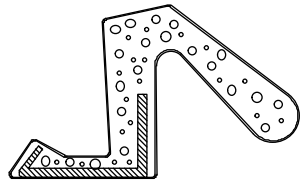


# Weather Strip, Frame

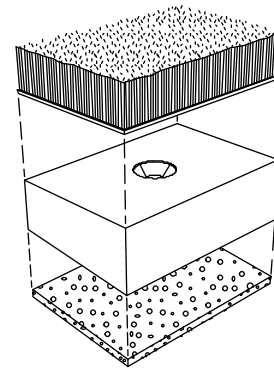
V017

| Length    | Color | PN       |
|-----------|-------|----------|
| 164 5/32" | Beige | 11197596 |





**Foam Weather Strip, Frame V650**  
No longer available.



**Sill Dust Block Assembly**  
No longer available.

## When ordering replacement panels, specify:

NOTE: Weather strip is included with all panels (where applicable).

1. OM of panel (NOTE: OM of panel does not include astragal, mull casing);
2. template required for Ultimate Arch Top French door panel prior to 7/14/03
3. Active, Inactive or Stationary;
  - a. Active - specify no lock (no bore), bore for passage latch/dead bolt, single-point mortise lock or multi-point lock.
  - b. Inactive - specify head or foot bolts or multi-point lock.
  - c. Stationary - specify configuration and/or mull casing (if applicable).
  - d. Panel style
4. Handing;
5. Glazing;
6. Finish;
7. Glazing bead profile
  - a. bevel
  - b. square.
    - Active panels include sweep and route for hinges.
    - Inactive panels include sweep, route for hinges, astragal and head and foot bolts.
    - Stationary panels include leveling block.

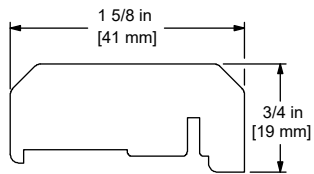


### When ordering replacement parts, specify:

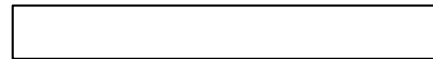
1. Original order/line number;
2. profile number;
3. length;
4. handing;
  - a. on jamb filler specify right or left jamb (viewed from exterior)
5. finish.

### Usage dates:

5/98 to Present



**Astragal, W7528**



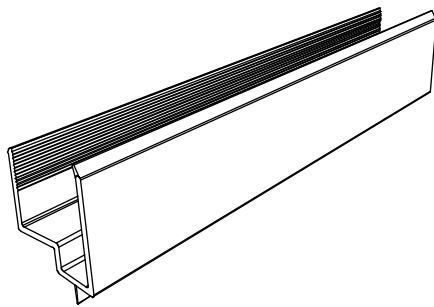
**Stationary Panel Head Jamb Spacer, W6126**

**When ordering replacement parts, specify:**

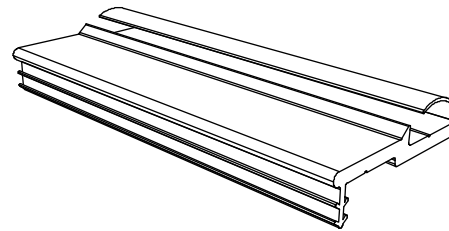
1. Original order/line number;
2. profile number;
3. length;
4. handing;
5. finish.

**Usage dates:**

5/98 to Present



**Bottom Rail Filler, V200**



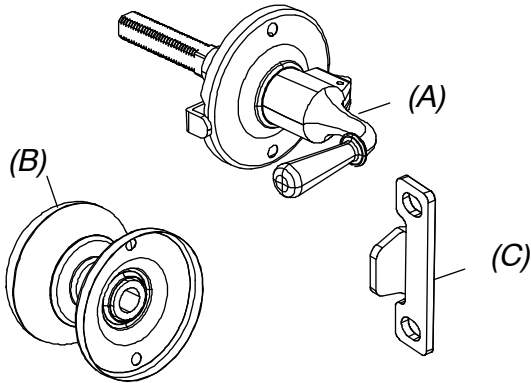
**Astragal Base/Weather Strip, V822 - Beige**

# Handle Package, Solid Brass

## Includes:

- 1 - Interior locking handle assembly (A) with rose
- 1 - Exterior handle (B) with rose
- 1 - Strike (C)
- 4 - #5 x 5/8" Phillips oval head wood screws (handle)
- 2 - #8 x 5/8" pan head wood screws (strike)

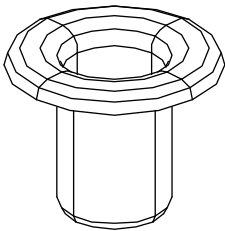
| PN       |
|----------|
| 11100301 |



# Thimble

Head Bolt Receiver

| Color | PN       |
|-------|----------|
| Brass | 02540664 |

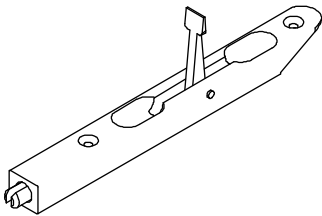


# Head or Foot Bolt, Solid Brass

## Includes:

- 1 - Bolt Assembly

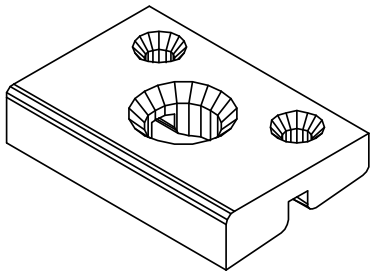
| PN       |
|----------|
| 00143068 |



## 6 9/16" Sill Strike

Foot Bolt receiver - specify prep for combination

| Color | PN       |
|-------|----------|
| Beige | 05700031 |

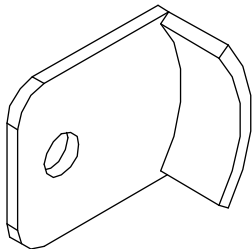


## Keeper, Storm Insert

**Usage dates:**

5/98 to Present

| PN       |
|----------|
| 00143062 |

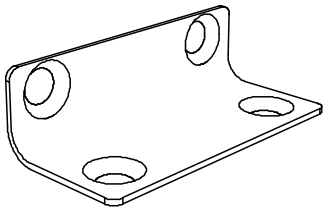


## Stationary Panel Bracket

**Includes:**

- 1 - Stationary panel bracket
- 4 - #7 x 3/4" Phillips flat head wood screws

| PN       |
|----------|
| 11841000 |



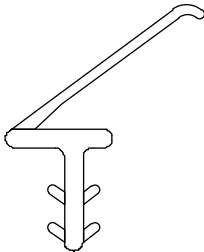
## Drip Cap, Storm Insert

V795

**Usage dates:**

5/98 to Present

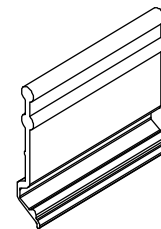
| Length | Color | PN       |
|--------|-------|----------|
| 144"   | Beige | NA       |
|        | Black | 15646069 |



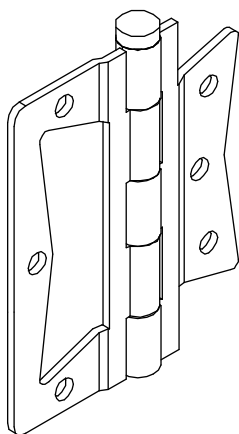




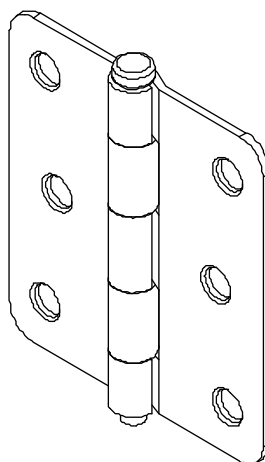
**Leaf Spring, Screen Insert**  
Usage dates: 5/98 to Present  
No longer available



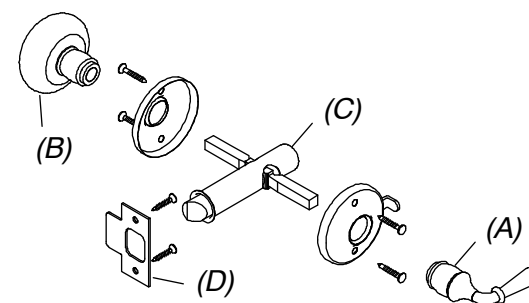
**Finger Pull, Screen Insert**  
Usage dates: 5/98 to Present  
No longer available



**Surface Mount Hinge Pair, Solid Brass**  
No longer available



**Hinge, Solid Brass**  
No longer available



**Handle Set, Solid Brass**  
No longer available