



Essential Single Hung

Replacement Parts

Specifications and technical data are subject to change without notice.

Numbers listed in () parentheses are metric equivalents in millimeters rounded to the nearest whole number.

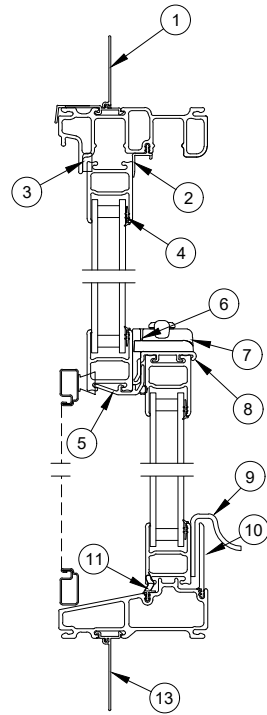
Suggested fasteners are not included and must be ordered separately.

Illustrations are not to scale.

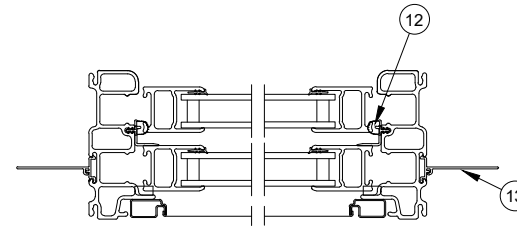
Contents

Product History.....	2
Part Identification - Operator	3
Part Identification - Stationary/Picture.....	4
Locking Hardware	5
Locking Hardware - Discontinued No Availability (NA)	6
Miscellaneous Parts	7
Miscellaneous Parts - Discontinued Limited Availability (LA).....	10
Miscellaneous Parts - Discontinued No Availability (NA).....	11
Balance Tube Replacement	12
Balance Tubes	13
Vinyl Parts.....	18
Vinyl Parts - Discontinued Limited Availability (LA).....	24
Vinyl Parts - Discontinued No Availability (NA)	25
Weather Strip	26
Weather Strip - Discontinued Limited Availability (LA)	28
Weather Strip - Discontinued No Availability (NA)	30
Sash Replacement.....	31
Screen Replacement.....	32
Screen Parts	33
Screen Parts - Discontinued Limited Availability (LA)	34
Screen Parts - Discontinued No Availability (NA).....	35
Sash, Frame, Screen and DLO charts - Equal Sash Units.....	36
Sash, Frame, Screen and DLO charts - Cottage Units	37
Sash, Frame, Screen and DLO charts - Reverse Cottage Units.....	38

Pro-duced	Unit Type	Features and Changes
2006	Single Hung	04/2006: Unit features 3/4" double strength insulating Low E II w/argon. GBGs are available in White, and Pebble Gray. 2" jambs with a 4 9/16" and 6 9/16" extensions. Available with factory applied sheet rock return and field applied J-channel. White interior only with white hardware. Pebble Gray and Stone White Ultrex exteriors. 09/2006: V1532 sill liner replaced with V1552 and sill liner seals. Sash lift redesigned. Prairie GBG Lite cuts made available for Essential products. See Product Bulletin 69 for more details.
2007	Single Hung	03/26/2007: Bronze exterior introduced. Original sash stop replaced with stop designed for the new Double Hung. 11/2007: Evergreen exteriors introduced. V1143 and V1152 frame weather strip changed from gray to beige. V1472 leveling block changed to V1562.
2008	Single Hung	03/17/2008: Cashmere exteriors introduced. 10/2008: CN28 introduced.
2009	Single Hung	03/2009: Frame change to Double Hung profile. Ebony exteriors introduced. 05/2009: LoE3 366 glass option introduced.
2010	Single Hung	02/2010: Introduced new hardware finishes: Oil Rubbed Bronze (ORBZ), Satin Nickel (SN) PVD; Brass PVD (BS)
2011	Single Hung	06/2011: Increased frame weather strip (.328") and modified the sash hanger with new dust block. 08/2011: Sill weather strip V1992 replaced with V2099
2012	Single Hung	04/30/2012: Now available with the unequal sash option. 10/ 29/2012: Introduced Essential expanded sizes and mulls.
2013	Single Hung	08/26,/2013: Added new cam lock and keeper and forced entry clip. Additional CN 60 and 66 heights added to the Cottage offerings. 10/28/2013: Discontinued the optional vent stop option for limiting sash travel and venting. Added Window Opening Control Device (WOCD); offers sash limits and venting option. Bottom sash tilt latch was slightly modified and works on all units manufactured from 9/2006 to present.
2015	Single Hung	02/23/2015: Introduced a new drip cap with nailing fin.
2017	Single Hung	02/27/2017: Implemented redesign on Essential Single Hung, Single Hung, and Glider windows. V1541 weather strip was replaced by V1143. 12/18/2017: Added availability of customer specified lite cut configurations for SDL GBG. To include allowing any color GBG to the exterior only of standard and special sized units.
2018	Single Hung	02/2018: Introduced Bronze and Ebony interior option. Standardized Ebony exterior from Essential Ebony to Marvin Ebony. 10/29/2018: Low E3 ERS glass type was added. 12/17/2018: Introduced textured glass types: Reed, Narrow Reed, Rain, Glue Chip and Frost and also colored glass types: Clear, Bronze, Gray and Green.
2019	Single Hung	01/28/2019: Screen frame was updated.
2020	Single Hung	01/2020: Protective Glass Film becomes a standard feature across all Essential product lines. 04/27/2020: Added WOCD field applied and replacement kits.
2021	Single Hung	10/25/2021: Standard screen mesh changed to Marvin Bright View™. See product bulletin 793 for more information.
2022	Single Hung	06/27/2022: The Essential collection will transition to black weatherstrip (and associated components) for all window and door products, effective June 27th, 2022. Beige weather strip will continue to be available for warranty/service needs. See Product Bulletin 834 for more information. 09/12/2022: Added part numbers for limited travel balance tubes for upper and lower balance tube use. 10/31/2022: Evergreen exterior discontinued. See Product Bulletin 851 for more information.
2023	Single Hung	02/27/2023: Gunmetal introduced. See Product Bulletin 863 for more information.
2025	Single Hung	10/27/2025: LowE2 with ERS and Laminated glass added. See Product Bulletin 991 for more information. The Stainless Steel Perimeter Bar option in OMS updated the description from "Stainless" to "Silver". See Product Bulletin 990 for more information.

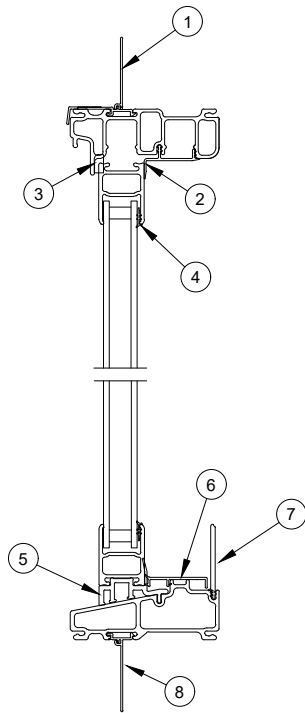


Head Jamb and Sill Detail

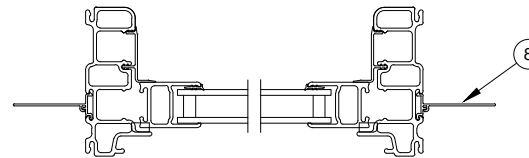


Jamb Detail

1. Head Jamb Nail Fin with Drip Cap, V2395 (see Accessories section)
2. Parting Stop, Head Jamb, V1311
3. Foam Tape
4. Vinyl Glazing Boot, V1415 (see Accessories section)
5. Sash Cover, Top, V1749
6. Sash Keeper
7. Sash Lock
8. Sash Cover, Bottom, V1509
9. Sash Lift
10. Sill Liner, V2697/V3002
11. Sill Weather Strip, V2099
12. Frame Weather Strip, V1143
13. Sill and Jamb Nail Fin, V1428 (see Accessories section)



Head Jamb and Sill Detail



Jamb Detail

1. Head Jamb Nail Fin with Drip Cap, V2395 (see Accessories section)
2. Stationary Parting Stop, Head Jamb, V1405
3. Foam Tape
4. Vinyl Glazing Boot, V1415 (see Accessories section)
5. Leveling Block, V2070/V2859
6. Sill Filler, V2844
7. Sill Liner, V2697/V3002
8. Sill and Jamb Nail Fin, V1428 (see Accessories section)

Cam Lock

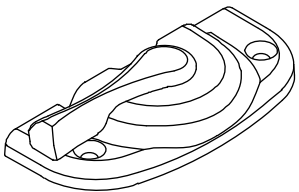
NOTE: If being used on a unit prior to 8/26/2013, both Cam Lock and Keeper will need to be replaced. A Forced Entry Clip will need to be ordered.

Usage dates:

08/26/2013 - present

Color	PN
Stone White	10824021
Almond Frost	10824023
Brass	10824025
Satin Nickel	10824027
Oil Rubbed Bronze	10824029
Matte Black	10824033

Suggested Fasteners	PN
2 - #7-16 x 7/8" flat head screw	
Stone White	10840019
Almond Frost	11840774
Brass	11800787
Satin Nickel	11800796
Oil Rubbed Bronze*	11800794
*Used for Oil Rubbed Bronze and Matte Black	



Keeper

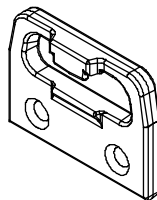
NOTE: If being used on a unit prior to 8/26/2013, both Cam Lock and Keeper will need to be replaced. A Forced Entry Clip will need to be ordered.

Usage dates:

08/26/2013 - present

Color	PN
Stone White	10819040
Almond Frost	10819080
Brass	10819050
Satin Nickel	10819060
Oil Rubbed Bronze	10819070
Matte Black	10819090

Suggested Fasteners	PN
2 - #7-16 x 7/8" flat head screw	
Stone White	10840019
Almond Frost	11840774
Brass	11800787
Satin Nickel	11800796
Oil Rubbed Bronze*	11800794
*Used for Oil Rubbed Bronze and Matte Black	



Cam Lock and Keeper

Includes:

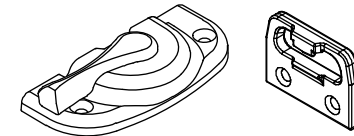
- 1 – Lock
- 1 – Keeper
- 4 – #7-16 x 7/8" flat head screws

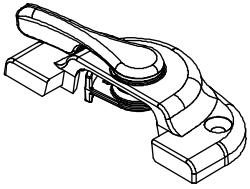
NOTE: If used on a unit prior to 8/26/2013 a Forced Entry Clip will need to be ordered.

Usage dates:

08/26/2013 - present

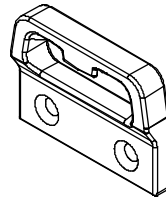
Color	PN
Stone White	11800921
Almond Frost	11800923
Brass	11800925
Satin Nickel	11800927
Oil Rubbed Bronze	11800929
Matte Black	11800934





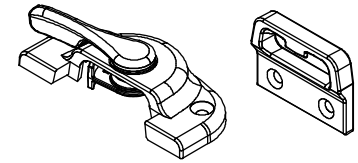
Sash Cam Lock

Usage Dates: 11/2006 to 08/26/2013



Sash Keeper

Usage Dates: 11/2006 to 08/26/2013



Sash Cam Lock and Keeper

Usage Dates: 11/2006 to 08/26/2013

Weep Cover and Flap

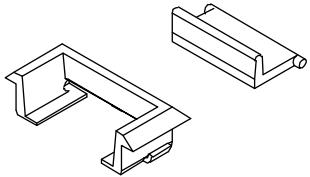
Usage dates:

02/27/2017 - present

NOTE: These parts will come pre-assembled.

Color	PN
Stone White	10506722
Pebble	10506723
Bronze	10506724
Ebony	10506727
Cashmere	10506726
Gunmetal	10506743
*Evergreen	10506725

NOTE: *DISC (LA) used prior to 10/29/2022

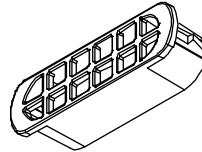


Drain Cover

Usage dates:

02/27/2017 - present

Color	PN
White	10506704
Black	10506733



Sash Cam Lock Limiter Kit

Includes:

- 1 – Sash cam lock limiter
- 1 – #6 x 1 1/4" Torx pan head screw
- 1 – Warning label
- 1 – Instruction

NOTE: 1 kit per lock

Color	PN
Stone White	11880480
Almond Frost	11880481
Brass	11880482
Satin Nickel	11880483
Oil Rubbed Bronze	11880484
Matte Black	11880485

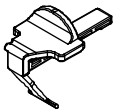


Bottom Sash Tilt Latch

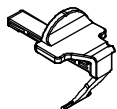
Usage dates:

09/2006 - present

Handing	Colors and Part Numbers			
	Stone White	Bronze	Ebony	Gunmetal
LH	11860077	11860797	11860799	11860827
RH	11860076	11860796	11860798	11860826



RH



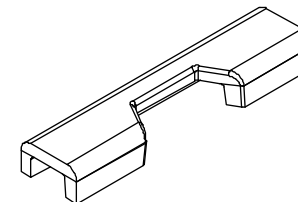
LH

Forced Entry Clip

Usage dates:

08/26/2013 - present

PN
11860289

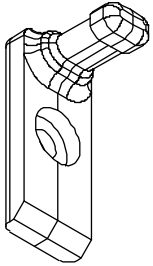


Bottom Sash Tilt Pin

Includes:

- 1 - Tilt pin
- 1 - #8 x 5/8" Phillips pan head screw

Color	PN
Black	11812141



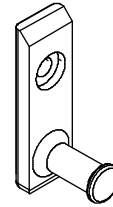
Top Sash Tilt Pin

Usage dates:

03/2009 - present

Color	PN
Black	11500034

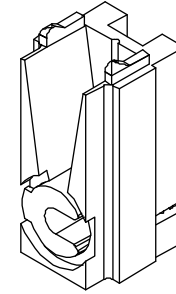
Suggested Fasteners	PN
1 - #8 x 5/8" Phillips pan head screw	11800821



Balance Tube Clutch

Non-handed

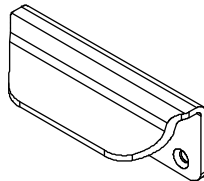
Color	PN
Gray	105530



Sash Lift

Color	PN
Stone White	11867807
Bronze	11867809
Ebony	11867808

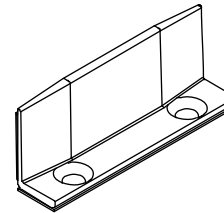
Suggested Fasteners	
2 - #7-16 x 7/8" flat head screw	
Color	PN
Stone White	10840019
Oil Rubbed Bronze	11800794
NOTE: Oil Rubbed Bronze used with Bronze or Ebony.	



Sill Bracket, with Tape

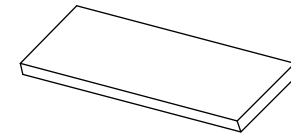
Tape is used for application

Color	PN
White	10506901
Black	10506902



Sash Hanger Gasket

Color	PN
Beige	10500663



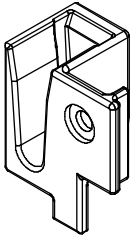
Stationary Sash Hanger

Includes:

- 1 - Hanger
- 1 - Rivet

NOTE: If replacing on product manufactured prior to 5/31/11, you must replace both sash hangers, parting stop and jamb weather strip.

Color	LH PN	RH PN
Black	11500433	11500432



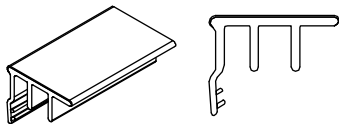
Bottom Sash Stop

V2204

Usage dates:

08/26/2013 - present

Length	White PN	Black PN
2 1/32" (52)	11802200	11802205
Lineal 144" (3658)	11802204	11802206



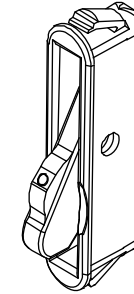
WOCD Field Applied and Replacement Kits

Includes:

- 1 – Field installation instructions
- 1 – Hang tag
- 2 – Safety and operating instructions
- 1 – WOCD sticker
- 2 – Mini AVL WOCD

NOTE: Quantity of 2 needed per unit.

Color	PN
Stone White	11902905
Black	11902907

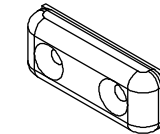


Sash Limiter Kit

Includes:

- 2 – Limiter
- 4 – #8–18 x 5/8 PH, FH, SS
- 2– #6 x 1/2 Torx head screws
- 1 – Warning label
- 1 – Instruction

Color	PN
White	11880080
Black	11880980

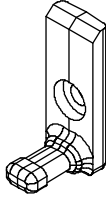


Bottom Sash Tilt Pin

Usage dates:

Used prior to 12/2016

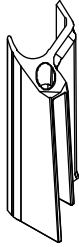
PN
10815279

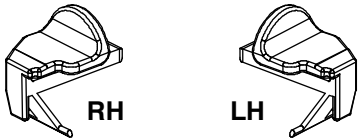


Sill Liner End Cap

NOTE: Use for replacement of sill liner seals on all units produced prior to 02/27/2017

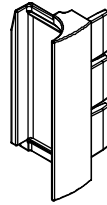
Color	LH PN	RH PN
Stone White	11862644	11862643





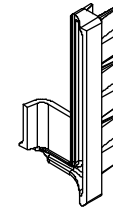
Bottom Sash Tilt Latch

Used prior to 09/2006
No longer available.



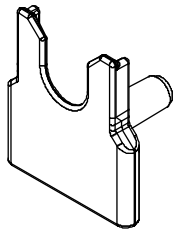
Sill Liner Seal

Used 09/24/2007-02/27/2017
No longer available, replace with
Sill Liner End Cap.



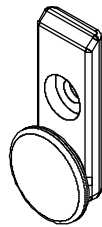
Sill Liner Seal

Used 04/2006-09/2007
No longer available, replace
with current.



Stationary Sash Hanger

Used 04/2006-03/2009
No longer available.



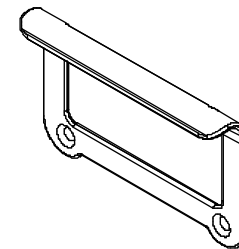
Top Sash Tilt Pin

Used 04/2006-03/2009
No longer available.



Bottom Sash Stop

Used: 04/2006-08/26/2013
No longer available.



Sash Lift

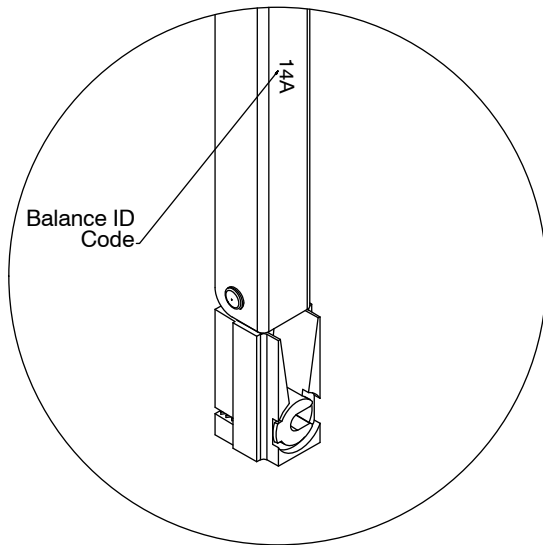
No longer available,
replace with current.

Ordering Specifications (use all that apply):

1. Original order number
2. Balance ID code; (if not available provide the width and height of sash)
3. Glass type; (STC/OITC glass upgrade or not STC/OITC glass upgrade)
4. Divided lite
5. Sash ratio; (equal, cottage, or reverse cottage)

NOTE: In the following PN charts, upper and lower are used to indicate balance tube location for limited travel balance tubes. A "U" or "L" will be printed on the balance tube.

NOTE: Upper tubes will not be used on Essential Single Hung.



Balance ID Code	Part Number
10A	106010
10B	106110
10C	106210
10D	106310
10E	106410
10F	106510

Balance ID Code	Part Number
11A	106011
11B	106111
11C	106211
11D	106311
11E U (Upper)	106411
11E L (Lower)	206411

Balance ID Code	Part Number
12A	106012
12B	106112
12C	106212
12D	106312
12E U (Upper)	106412
12E L (Lower)	206412
12F U (Upper)	106512
12F L (Lower)	206512

Balance ID Code	Part Number
13A	106013
13B	106113
13C	106213
13D	106313
13E	106413
13F U (Upper)	106513
13F L (Lower)	206513

Balance ID Code	Part Number
14A	106014
14B	106114
14C	106214
14D	106314
14E	106414
14F	106514
14G U (Upper)	106614
14G L (Lower)	206614
14H U (Upper)	106714
14H L (Lower)	206714

Balance ID Code	Part Number
15A	106015
15B	106115
15C	106215
15D	106315
15E	106415
15F	106515
15G	106615

Balance ID Code	Part Number
16A	106016
16B	106116
16C	106216
16D	106316
16E	106416
16F	106516
16G	106616
16HU (Upper)	106716
16H L (Lower)	206716
16I U (Upper)	106816
16I L (Lower)	206816

Balance ID Code	Part Number
17A	106017
17B	106117
17C	106217
17D	106317
17E	106417
17F	106517
17G	106617

Balance ID Code	Part Number
18A	106018
18B	106118
18C	106218
18D	106318
18E	106418
18F	106518
18G	106618
18H	106718
18I U (Upper)	106818
18I L (Lower)	206818

Balance ID Code	Part Number
19A	106019
19B	106119
19C	106219
19D	106319
19E	106419
19F	106519
19G	106619
19H	106719

Balance ID Code	Part Number
20A	106020
20B	106120
20C	106220
20D	106320
20E	106420
20F	106520
20G	106620
20H U (Upper)	106720
20H L (Lower)	206720
20I U (Upper)	106820
20I L (Lower)	206820

Balance ID Code	Part Number
21A	106021
21B	106121
21C	106221
21D	106321
21E	106421
21F	106521
21G	106621

Balance ID Code	Part Number
22A	106022
22B	106122
22C	106222
22D	106322
22E	106422
22F	106522
22G	106622
22H	103722
22I U (Upper)	106822
22I L (Lower)	206822
22J U (Upper)	106922
22J L (Lower)	206922

Balance ID Code	Part Number
23A	109023
23B	106123
23C	106223
23D	106323
23E	106423
23F	106523
23G	106623
23H	106723

Balance ID Code	Part Number
24A	106024
24B	106124
24C	106224
24D	106324
24E	106424
24F	106524
24G	106624
24H	106724
24I U (Upper)	106824
24I L (Lower)	206824

Balance ID Code	Part Number
25A	106025
25B	106125
25C	106225
25D	106325
25E	106425
25F	106525
25G	106625
25H	106725

Balance ID Code	Part Number
26A	106026
26B	106126
26C	106226
26D	106326
26E	106426
26F	106526
26G	106626
26H	106726
26I U (Upper)	106826
26I L (Lower)	206826
26J U (Upper)	106926
26J L (Lower)	206926

Balance ID Code	Part Number
27A	106027
27B	106127
27C	106227
27D	106327
27E	106427
27F	106527
27G	106627
27H	106727

Balance ID Code	Part Number
28A	106028
28B	106128
28C	106228
28D	106328
28E	106428
28F	106528
28G	106628
28H	106728
28I U (Upper)	106828
28I L (Lower)	206828
28J U (Upper)	106928
28J L (Lower)	206928
28K U (Upper)	109028
28K L (Lower)	209028

Balance ID Code	Part Number
29A	106029
29B	106129
29C	106229
29D	106329
29E	106429
29F	106529
29G	106629
29H	106729

Balance ID Code	Part Number
30A	106030
30B	106130
30C	106230
30D	106330
30E	106430
30F	106530
30G	106630
30H	106730
30I U (Upper)	106830
30I L (Lower)	206830
30J U (Upper)	106930
30J L (Lower)	206930
30K U (Upper)	109030
30K L (Lower)	209030

Balance ID Code	Part Number
31A	106031
31B	106131
31C	106231
31D	106331
31E	106431
31F	106531
31G	106631
31H	106731
31I U (Upper)	106831
31I L (Lower)	206831
31J U (Upper)	106931
31J L (Lower)	206931

Balance ID Code	Part Number
32A	106032
32B	106132
32C	106232
32D	106332
32E	106432
32F	106532
32G	106632
32H	106732
32I U (Upper)	106832
32I L (Lower)	206832
32J U (Upper)	106932
32J L (Lower)	206932
32J U (Upper)	106933
32J L (Lower)	206933
32K U (Upper)	109032
32K L (Lower)	209032
32L U (Upper)	109132
32L L (Lower)	209132
32M U (Upper)	109232
32M L (Lower)	209232

Balance ID Code	Part Number
33A	106033
33B	106133
33C	106233
33D	106333
33E	106433
33F	106533
33G	106633
33H	106733
33I	106833
33J U	106933

Balance ID Code	Part Number
34A	106034
34B	106134
34C	106234
34D	106334
34E	106434
34F	106543
34G	106634
34H	106734
34I	106834
34J U (Upper)	106934
34J L (Lower)	206934
34K U (Upper)	109034
34K L (Lower)	209034
34L U (Upper)	109134
34L L (Lower)	209134
34M U (Upper)	109234
34M/L (Lower)	209234
34N U (Upper)	109334
34N/L (Lower)	209334

Balance ID Code	Part Number
35A	106035
35B	106135
36C	106235
35D	106335
35E	166435
35F	106535
35G	106635
35H	106735
35I	106835
35J U (Upper)	109935
35J L (Lower)	209935
35K U (Upper)	108035
35K L (Lower)	208035

Balance ID Code	Part Number
36A	106036
36B	106136
36C	106236
36D	106336
36E	106436
36F	106536
36G	106636
36H	106736
36I	106836
36JU (Upper)	106936
36J/L (Lower)	206936
36KU (Upper)	109036
36K/L (Lower)	209036
36LU (Upper)	109136
36L L (Lower)	209136
36MU-41 (Upper)	109236
36M-41 (Lower)	209236
36NU-42 (Upper)	109336
36N/L-42 (Lower)	209336
36NU-43 (Upper)	109436
36N/L-43 (Lower)	209436

Balance ID Code	Part Number
37A	106037
37B	106137
37C	106237
37D	106337
37E	106437
37F	106537
37G	106637
37H	106737
37I	106837
37J U (Upper)	106937
37J/L (Lower)	206937
37K U (Upper)	109037
37K L (Lower)	209037
37U (Upper)	109137
37/L (Lower)	209137

Balance ID Code	Part Number
38A	106038
38B	106138
38C	106238
38D	106338
38E	106438
38F	106538
38G	106638
38H	106738
38I	106838
38JU (Upper)	106938
38J L (Lower)	206938
38K U (Upper)	109038
38K L (Lower)	209038
38L U (Upper)	109138
38L L (Lower)	209138
38M U (Upper)	109238
38M/L (Lower)	209238
38N U (Upper)	109338
38N/L (Lower)	209338
38O U (Upper)	109438
38O/L (Lower)	209438
38P U (Upper)	109538
38P/L (Lower)	209538

Balance ID Code	Part Number
39AA	105039
39K U/L	109038
39L U/L	109138

Balance ID Code	Part Number
40A	106040
40B	106140
40C	106240
40D	106340
40E	106440
40F	106540
40G	106640
40H	106740
40I	106840
40J U (Upper)	106940
40J L (Lower)	206940
40K U (Upper)	109040
40K L (Lower)	209040
40L U (Upper)	109140
40L L (Lower)	209140
40M U (Upper)	109240
40M/L (Lower)	209240
40N U (Upper)	109340
40N/L (Lower)	209340
40O U (Upper)	109440
40O/L (Lower)	209440

Balance ID Code	Part Number
41AA	105041
41A	106041
41B	106141
41C	106241
41D	106341
41E	106441
41F	106541
41G	106641
41H	106741
41I	106841
41J U (Upper)	106941
41J/L (Lower)	206941
41K U (Upper)	109041
41K/L (Lower)	209041
41L U (Upper)	109141
41L/L (Lower)	209141

Balance ID Code	Part Number
42A	106042
42B	106142
42C	106242
42D	106342
42E	106442
42F	106542
42G	106642
42H	106742
42I	106842
42J U (Upper)	106942
42J L (Lower)	206942
42K U (Upper)	107242
42K L (Lower)	207242
42L U (Upper)	109142
42L L (Lower)	209142
42M U (Upper)	109242
42M/L (Lower)	209242

Balance ID Code	Part Number
43AA	105043
43A	106043
43B	106143
43C	106243
43D	106343
43E	106443
43F	106543
43G	106643
43H	106743
43I	106843
43J U (Upper)	106943
43J/L (Lower)	206943
43K U (Upper)	109043
43K/L (Lower)	209043
43L U (Upper)	109143
43L L (Lower)	209143

Balance ID Code	Part Number
44AA	105044
44A	106044
44B	106144
44C	106244
44D	106344
44E	106444
44F	106544
44G	106644
44H	106744
44I	106844
44J U (Upper)	106945
44J L (Lower)	206945
44K U (Upper)	107044
44K L (Lower)	207044
44L U (Upper)	109144
44L L (Lower)	209144

Sill Liner

V3002

Usage dates:

12/16/2019 – present

NOTE: Replaces V2846 used 02/27/2017 – 12/15/2019

CN	Length	Bronze	Ebony	Gunmetal
CN16	16 47/64" (725)	41511016	41511116	41519116
CN20	22 47/64" (577)	41511020	41511120	41519120
CN26	28 47/64" (730)	41511026	41511126	41519126
CN28	30 47/64" (781)	41511028	41511128	41519128
CN30	34 47/64" (882)	41511030	41511130	41519130
CN36	40 47/64" (1035)	41511036	41511136	41519136
CN40	46 47/64" (1187)	41511040	41511140	41519140
CN50	58 47/64" (1492)	41511050	41511150	41519150
CN60	70 47/64" (1797)	41511060	41511160	41519160
Lineal	96" (2438)	41511096	41511196	41519196



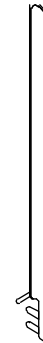
Sill Liner

V2697

Usage dates:

02/27/2017 – present

CN	Length	Stone White
CN16	16 47/64" (725)	31511316
CN20	22 47/64" (577)	31511320
CN26	28 47/64" (730)	31511326
CN28	30 47/64" (781)	31511328
CN30	34 47/64" (882)	31511330
CN36	40 47/64" (1035)	31511336
CN40	46 47/64" (1187)	31511340
CN50	58 47/64" (1492)	31511350
CN60	70 47/64" (1797)	31511360
Lineal	96" (2438)	31511396



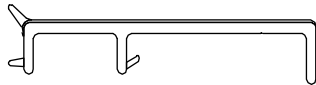
Sill Filler, Picture/Transom

V2844

Usage dates:

02/27/2017 - present

CN	Length	Color and Part Number			
		Stone White	Bronze	Ebony	Gunmetal
CN16	15 7/16" (392)	31512416	31512516	31512616	31519616
CN20	21 7/16" (545)	31512420	31512520	31512620	31519620
CN26	27 7/16" (697)	31512426	31512526	31512626	31519626
CN28	29 7/16" (748)	31512428	31512528	31512628	31519628
CN30	33 7/16" (849)	31512430	31512530	31512630	31519630
CN36	39 7/16" (1002)	31512436	31512536	31512636	31519636
CN40	45 7/16" (1154)	31512440	31512540	31512640	31519640
CN50	57 7/16" (1459)	31512450	31512550	31512650	31519650
CN60	69 7/16" (1764)	31512460	31512560	31512660	31519660
Lineal	144" (3658)	31512499	31512599	31512699	31519699

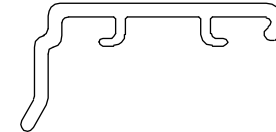


Sash Cover

V1509

Single Lock					
CN	Length	Color and Part Number			
		Stone White	Bronze	Ebony	Gunmetal
CN16	15 1/4" (3871)	17043718	15919416	15919316	15999316
CN20	21 1/4" (540)	17043724	15919420	15919320	15999320
CN26	27 1/4" (692)	17043730	15919426	15919326	15999326

Double Lock					
CN	Length	Color and Part Number			
		Stone White	Bronze	Ebony	Gunmetal
CN28	29 1/4" (743)	17043833	15919728	15919228	15999028
CN30	33 1/4" (845)	17043836	15919730	15919230	15999030
CN36	39 1/4" (997)	17043842	15919736	15919236	15999036
CN40	45 1/4" (1149)	17043848	15919740	15919240	15999040

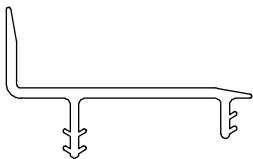


Stationary Parting Stop

V1405

Head Jamb					
CN	Length	Stone White	Bronze	Ebony	Gunmetal
CN16	15 7/16" (392)	22000516	23000716	23000616	23000816
CN20	21 7/16" (545)	22000520	23000720	23000620	23000820
CN26	27 7/16" (697)	22000526	23000726	23000626	23000826
CN28	29 7/16" (748)	22000528	23000728	23000628	23000828
CN30	33 7/16" (773)	22000530	23000730	23000630	23000830
CN36	39 7/16" (1001)	22000536	23000736	23000636	23000836
CN40	45 7/16" (1154)	22000540	23000740	23000640	23000840
CN50	57 7/16" (1459)	22000550	23000750	23000650	23000850
CN60	69 7/16" (1764)	22000560	23000760	23000660	23000860

Jamb					
CN	Length	Stone White	Bronze	Ebony	Gunmetal
CN10	9 15/16" (252)	21000810	22000710	22000610	22000810
CN16	15 15/16" (405)	21000816	22000716	22000616	22000816
CN20	21 15/16" (557)	21000820	22000720	22000620	22000820
CN26	27 15/16" (710)	21000826	22000726	22000626	22000826
CN30	33 15/16" (862)	21000830	22000730	22000630	22000830
CN36	39 15/16" (1014)	21000836	22000736	22000636	22000836
CN40	45 15/16" (1167)	21000840	22000740	22000640	22000840
CN46	51 15/16" (1319)	21000846	22000746	22000646	22000846
CN50	57 15/16" (1472)	21000850	22000750	22000650	22000850
CN56	63 15/16" (1624)	21000856	22000756	22000656	22000856
CN60	69 15/16" (1776)	21000860	22000760	22000660	22000860
Lineal	96" (2438)	21000596	22000796	22000696	22000896



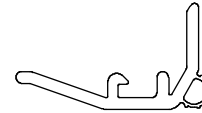
Sash Cover, Stationary/Top Sash

V1749

NOTE: Used on Top Sash

CN	Length	Black PN	*Beige PN
CN16	15 1/4" (387)	15919016	17005916
CN20	21 1/4" (540)	15919020	17005920
CN26	27 1/4" (692)	15919026	17005926
CN28	29 1/4" (743)	15919028	17005928
CN30	33 1/4" (845)	15919030	17005930
CN36	39 1/4" (997)	15919036	17005936
CN40	45 1/4" (1149)	15919040	17005940

NOTE: *DISC (LA) used prior to 06/27/2022



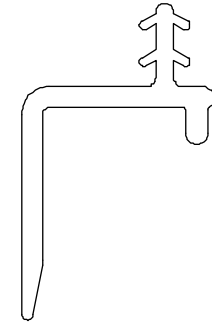
Parting Stop

V1311

Jamb - Equal Sash					
CN	Length	Stone White	Bronze	Ebony	Gunmetal
CN20	10 11/32" (263)	17027724	17038824	17039924	17089924
CN26	13 11/32" (339)	17027730	17038830	17039930	17089931
CN30	16 11/32" (415)	17027736	17038836	17039936	17089937
CN36	19 11/32" (491)	17027742	17038842	17039942	17089942
CN40	22 11/32" (568)	17027748	17038848	17039948	17089943
CN46	25 11/32" (644)	17027754	17038854	17039954	17089944
CN50	28 11/32" (720)	17027760	17038860	17039960	17089945
CN56	31 11/32" (796)	17027766	17038866	17039966	17089966
CN60	34 11/32" (872)	17027772	17038872	17039972	17089947
CN66	37 11/32" (949)	17027778	17038878	17039978	17089948
Lineal	96" (2438)	17000696	17034696	17035696	17085696

Head Jamb					
CN	Length	Stone White	Bronze	Ebony	Gunmetal
CN16	15 37/64" (396)	17012618	17034618	17035618	17085618
CN20	21 37/64" (548)	17012624	17034624	17035624	17085624
CN26	27 37/64" (700)	17012630	17034631	17035630	17085630
CN28	29 37/64" (751)	17012633	17034633	17035633	17085633
CN30	33 37/64" (853)	17012636	17034636	17035636	17085636
CN36	39 37/64" (1005)	17012642	17034642	17035642	17085642
CN40	45 37/64" (1158)	17012648	17034648	17035648	17085648

Jamb - Equal Sash - WOCD									
CN	Length	Stone White		Bronze		Ebony		Gunmetal	
		LH PN	RH PN	LH PN	RH PN	LH PN	RH PN	LH PN	RH PN
CN20	10 11/32" (263)	17121724	17121725	17121824	17121825	17131924	17131924	17181924	17181925
CN26	13 11/32" (339)	17121730	17121731	17121830	17121831	17121930	17121931	17181930	17181931
CN30	16 11/32" (415)	17121736	17121737	17121836	17121837	17121936	17121937	17181936	17181937
CN36	19 11/32" (491)	17121742	17121743	17121842	17121843	17121942	17121943	17181942	17181943
CN40	22 11/32" (568)	17121748	17121749	18121848	17121849	17141948	17121949	17181948	17181949
CN46	25 11/32" (644)	17121754	17121755	17121854	17121855	17121954	17121955	17181954	17181955
CN50	28 11/32" (720)	17121760	17121761	17121860	17121861	17121960	17121961	17181960	17181961
CN56	31 11/32" (796)	17121766	17121767	17121866	17121867	17121966	17121967	17181966	17181967
CN60	34 11/32" (872)	17121772	17121773	17121872	17121873	17121972	17121973	17181972	17181973
CN66	37 11/32" (949)	17121778	17121779	17121878	17121879	17121978	17121979	17181978	17181979
*	40 11/32" (1025)	17121783	17121783	17121882	17121886	17121982	17121983	17181982	17181983
*	43 11/32" (1101)	17121786	17121787	17121886	17121887	17121986	17121987	17181986	17181987
*Reverse Cottage sizes only									



Leveling Block

V2070/V2859

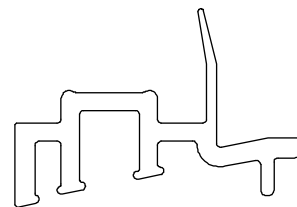
Usage dates:

05/2011 - present

NOTE: When replacing leveling blocks for units produced before 05/2011, you will also need to replace the end caps, using the current end caps.

CN	Length	Exterior Color and Part Number									
		Stone White	Pebble	Cashmere	Ebony	Bronze	Gunmetal	Bronze	Ebony	Gunmetal	*Evergreen
		Interior Color and Part Number									
		Stone White					Bronze	Ebony	Gunmetal	Stone White	
PN	PN	PN	PN	PN	PN	PN	PN	PN	PN	PN	
CN16	15 1/4" (387)	11201116	11201216	11201516	11307116	11305116	11387116	11308116	11309116	11389116	11306116
CN20	21 1/4" (540)	11201120	11201220	11201520	11307120	11305120	11387120	11308120	11309120	11389120	11306120
CN26	27 1/4" (692)	11201126	11201226	11201526	11307126	11305126	11387126	11308126	11309126	11389126	11306126
CN28	29 1/4" (743)	11201128	11201228	11201528	11307128	11305128	11387128	11308128	11309128	11389128	11306128
CN30	33 1/4" (845)	11201130	11201230	11201530	11307130	11305130	11387130	11308130	11309130	11389130	11306130
CN36	39 1/4" (870)	11201136	11201236	11201536	11307136	11305136	11387136	11308136	11309136	11389136	11306136
CN40	45 1/4" (1149)	11201140	11201240	11201540	11307140	11305140	11387141	11308140	11309140	11389140	11306140
CN50	57 1/4" (1454)	11201150	11201250	11201550	11307150	11305150	11387152	11308150	11309150	11389150	11306150
Lineal	96" (2438)	11201199	11201299	11201599	11307196	11305196	11387196	11308196	11309196	11389196	11306196

Suggested Fasteners	PN
2-#7 x 3/4" Phillips, pan head, full thread screws	118036



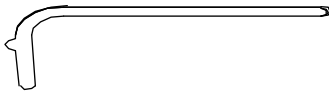
NOTE: *DISC (LA) used prior to 10/29/2022

Balance Tube Cover

V2870

Length	Black PN
9 1/16" (230)	11002809
10 1/16" (255)	11002810
11 1/16" (281)	11002811
12 1/16" (306)	11002812
13 1/16" (331)	11002813
14 1/16" (357)	11002814
15 1/16" (382)	11002815
16 1/16" (408)	11002816
17 1/16" (433)	11002817
18 1/16" (458)	11002818
19 1/16" (484)	11002819
20 1/16" (509)	11002820
21 1/16" (535)	11002821
22 1/16" (560)	11002822
23 1/16" (585)	11002823
24 1/16" (611)	11002824
25 1/16" (636)	11002825
26 1/16" (662)	11002826

Length	Black PN
27 1/16" (687)	11002827
28 1/16" (712)	11002828
29 1/16" (738)	11002829
30 1/16" (763)	11002830
31 1/16" (789)	11002831
32 1/16" (814)	11002832
33 1/16" (839)	11002833
34 1/16" (865)	11002834
35 1/16" (890)	11002835
36 1/16" (916)	11002836
37 1/16" (941)	11002837
38 1/16" (966)	11002838
39 1/16" (992)	11002839
40 1/16" (1017)	11002840
41 1/16" (1043)	11002851
42 1/16" (1068)	11002842
43 1/16" (1093)	11002843



Sill Liner

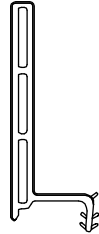
V1552

Usage dates:

09/24/2007 - 02/27/2017

NOTE: For units produced before 02/27/17 replace sill liner seal as well with sill liner end cap.

CN	Length	Stone White PN
CN16	15 15/64" (387)	31511216
CN20	21 15/64" (539)	31511220
CN26	27 15/64" (692)	31511226
CN28	29 15/64" (743)	31511228
CN30	33 15/64" (844)	31511230
CN36	39 15/64" (997)	31511236
CN40	45 15/64" (1149)	31511240
CN50	57 15/64" (1454)	31511250
CN60	69 15/64" (1759)	31511260
Lineal	96" (2438)	31511296



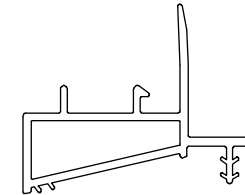
Leveling Block

V1472

Usage dates:

04/2006 - 10/2007

CN	Length	Interior Color - Stone White		
		Exterior Color and Part Number		
		Stone White	Pebble	Bronze
CN16	15 3/16" (386)	11007216	11007217	11007316
CN20	21 3/16" (538)	11007220	11007221	11007320
CN26	27 3/16" (691)	11007226	11007227	11007326
CN30	33 3/16" (843)	11007230	11007231	11007330
CN36	39 3/16" (985)	11007236	11007237	11007336
CN40	45 3/16" (1148)	11007240	11007241	11007340
CN50	57 3/16" (1453)	11007250	11007251	11007350
Lineal	96" (2438)	11007296	11007297	11007396



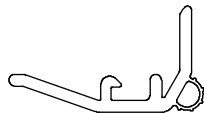
Stationary Sash Cover

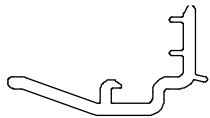
V1749

Usage dates:

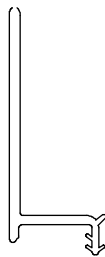
Used prior to 06/27/2022

CN	Length	Beige PN
CN16	15 1/4" (387)	17005916
CN20	21 1/4" (540)	17005920
CN26	27 1/4" (692)	17005926
CN28	29 1/4" (743)	17005928
CN30	33 1/4" (845)	17005930
CN36	39 1/4" (997)	17005936
CN40	45 1/4" (1149)	17005940

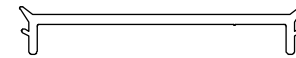




Sash Cover Top, V1510
Used 03/2007 to 07/2008
No longer available, replace
with V1749.



Sill Liner
Used 04/2006 to 09/2007
No longer available,
replace with current.

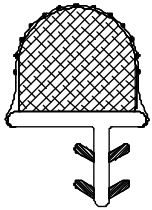


Sill Filler, Picture/Transom, V1557
Used 3/2007 to 2/27/2017
No longer available,
replace with V2844.

Frame Weather Strip

V1143

Bottom Jamb - Equal Sash		
CN	Length	Black PN
CN20	10 7/16" (265)	15906710
CN26	13 7/16" (341)	15906713
CN30	16 7/16" (418)	15906716
CN36	19 7/16" (494)	15906719
CN40	22 7/16" (570)	15906722
CN46	25 7/16" (546)	15906725
CN50	28 7/16" (722)	15906728
CN56	31 7/16" (799)	15906731
CN60	34 7/16" (875)	15906734
CN66	37 7/16" (951)	15906737
Lineal	96" (2438)	15906799



Sill Weather Strip

V2099

Usage dates:

08/29/2011 - present

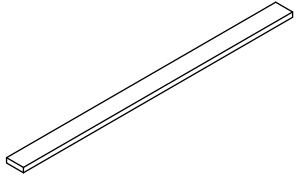
CN	Length	Black PN
CN16	15 1/4" (387)	11811016
CN20	21 1/4" (540)	11811020
CN26	27 1/4" (692)	11811026
CN28	29 1/4" (743)	11811028
CN30	33 1/4" (845)	11811030
CN36	39 1/4" (997)	11811036
CN40	45 1/4" (1149)	11811040
Lineal	96" (2438)	11811096



Foam Tape

1/4" x 1/8"

Length	Color	PN
50' (15240)	Gray	11406228



Check Rail Dust Block

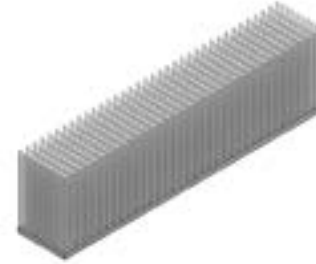
1/4" x 1 3/8"

Usage dates:

03/2009 - present

NOTE: Adhesive backed

Color	PN
Gray	10500559



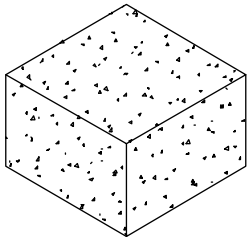
Balance Tube Foam Plug

3/4" x 3/4" x 1/2"

Usage dates:

08/26/2013 to present

Color	PN
White	10500104

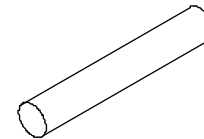


Foam Rope

V1244

7/32" (6) diameter

Length	Color	PN
50' (15240)	Beige	15910050



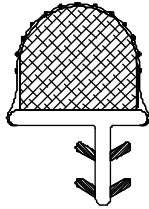
Frame Weather Strip

V1143

Usage dates:

Used prior to 06/27/2022

Bottom Jamb - Equal Sash		
CN	Length	Beige PN
CN20	10 7/16" (265)	15906610
CN26	13 7/16" (341)	15906613
CN30	16 7/16" (418)	15906616
CN36	19 7/16" (494)	15906619
CN40	22 7/16" (570)	15906622
CN46	25 7/16" (546)	15906625
CN50	28 7/16" (722)	15906628
CN56	31 7/16" (799)	15906631
CN60	34 7/16" (875)	15906634
CN66	37 7/16" (951)	15906637
Lineal	96" (2438)	15906699



Sill Weather Strip

V2099

Usage dates:

08/29/2011 - 06/27/2022

CN	Length	Beige PN
CN16	15 1/4" (387)	17001116
CN20	21 1/4" (540)	17001120
CN26	27 1/4" (692)	17001126
CN28	29 1/4" (743)	17001128
CN30	33 1/4" (845)	17001130
CN36	39 1/4" (997)	17001136
CN40	45 1/4" (1149)	17001140
Lineal	96" (2438)	17011199



Check Rail Dust Block

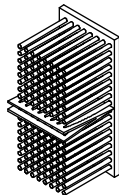
1 1/4" x 3/8"

Usage dates:

04/2006 - 03/2009

NOTE: Adhesive backed

Color	PN
Gray	10500239



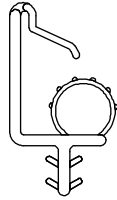
Frame Weather Strip

V1541

Usage dates:

04/2006 - 11/2007

Bottom Jamb - Equal Sash		
CN	Length	Gray PN
20	10 17/32" (256)	17000224
26	13 17/32" (344)	17000230
30	16 17/32" (420)	17000236
36	19 17/32" (496)	17000242
40	22 17/32" (572)	17000248
46	25 17/32" (648)	17000254
50	28 17/32" (725)	17000260
56	31 17/32" (801)	17000266
60	34 17/32" (877)	17000272
66/56C	37 17/32" (953)	17000278
Lineal	144" (3658)	17000299



Frame Weather Strip, Sill

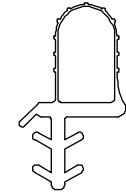
V1452

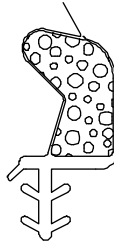
Usage dates:

Beige used 11/2007 - 02/22/2010

Gray used 04/2006 - 11/2007

Sill			
CN	Length	Beige PN	Gray PN
CN16	15 1/4" (387)	17333318	NA
CN20	21 1/4" (540)	17333324	
CN26	27 1/4" (692)	17333330	
CN28	29 1/4" (743)	17333333	
CN30	33 1/4" (845)	17333336	
CN36	39 1/4" (997)	17333342	
CN40	45 1/4" (1149)	17333348	
Lineal	96" (2438)	17333396	

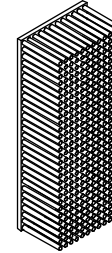




Sill Weather Strip, V1992

Used 2/22/2010 to 8/29/2011

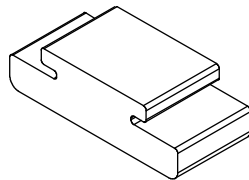
No longer available, replace with V2099



Check Rail Dust Block

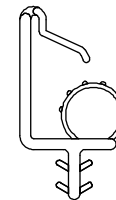
1 3/16" x 7/16" x 1/4" - adhesive backed

No longer available, replace with current.



Sash Seal

Usage dates: 04/2006 - 3/2009



**Frame Weather Strip - Jamb, Beige
Equal Sash**

Used 11/2007 to 1/9/2017

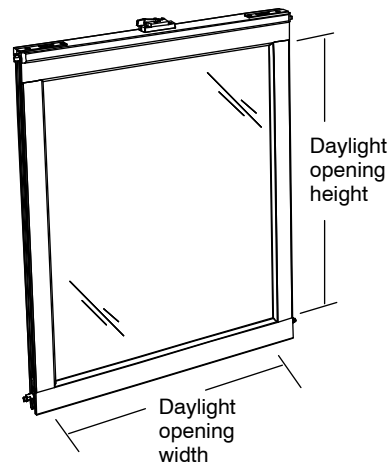
No longer available, replace with V1143.

To order, specify:

1. Original order number if available;
2. which sash is being replaced – top and bottom;
3. equal sash, cottage, or reverse cottage units;
4. size – provide the corresponding call number, rough opening, frame size, or outside measurement;
5. glazing;
6. color; hardware option; original order number if available, whether or not the original sash was made before or after 3/26/07.
7. if unit has an opening control device, state this on the order.

NOTE: Use the sash, frame and DLO charts to help determine sash and screen sizes. Original order number can be found etched into corner of glass or on label adhered to side of sash frame.

NOTE: Top sashes include replacement parting stops.

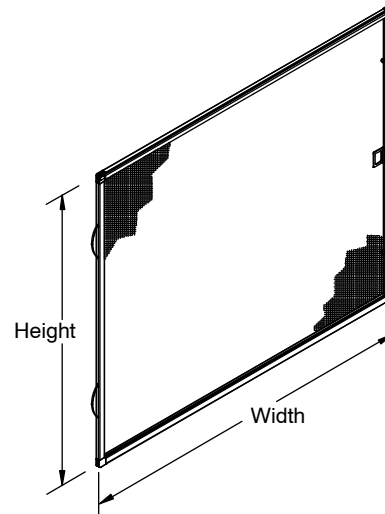


To order, specify:

1. Original order number if available;
2. size - provide the corresponding call number, rough opening, frame size, or outside measurement;
3. color;
4. half or full screen;
5. equal sash, cottage, or reverse cottage units.

NOTE: Use the sash, frame and DLO charts to help determine sash and screen sizes. Original order number can be found etched into corner of glass or on label adhered to side of sash frame.

NOTE: OM of screen includes corner keys.



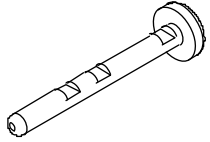
Half Screen shown

Friction Plunger, Screen

Usage dates:

01/28/2019 - present

Color	PN
Clear	10508195

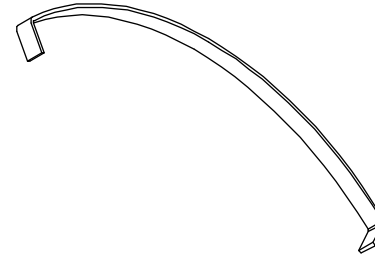


Screen Leaf Spring

Usage dates:

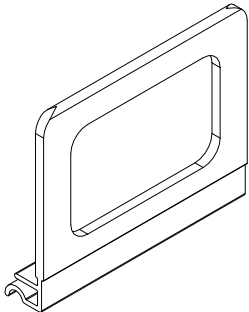
01/28/2019 - present

PN
11900897



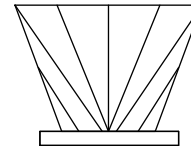
Finger Pull, Screen

PN
10508191



Half Screen Pile Weather Strip

Length	PN
Specify length	15619399



Screen Plunger Kit

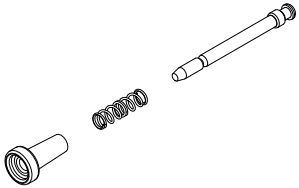
Includes:

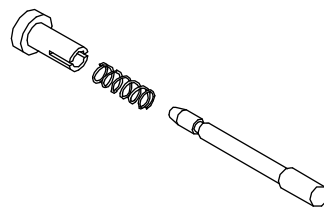
- 1 - Plunger Bolt
- 1 - Plunger Spring
- 1 - Plunger Cap, Black

Usage dates:

03/2007 - 1/27/2019

PN
11851053





Plunger and Spring Assembly

Plunger bolt (off white), Plunger cap (clear)

Used: 03/2007 - 01/27/2019

Use this chart to determine sizes for replacement sash and screen.

- Daylight Opening (DLO) is a measurement of the visible glass.
- Outside measurement = OM
- Sizes for Double Hung manufactured 03/26/2007 - present

NOTE: Sash OM does not include sash covers.

Operator Sash - Equal Sash Units					
Width					
Unit CN	Frame OM	Sash OM	1/2 Screen OM	Full Screen OM	DLO
16	17 1/2" (445)	15 1/4" (387)	15 23/32" (401)	15 23/32" (401)	12 9/16" (319)
20	23 1/2" (597)	21 1/4" (540)	21 23/32" (553)	21 23/32" (553)	18 9/16" (471)
26	29 1/2" (749)	27 1/4" (692)	27 23/32" (629)	27 23/32" (629)	24 9/16" (624)
28	31 1/2" (800)	29 1/4" (743)	29 23/32" (736)	29 23/32" (736)	26 9/16" (675)
30	35 1/2" (902)	33 1/4" (845)	33 23/32" (706)	33 23/32" (706)	30 9/16" (776)
36	41 1/2" (1054)	39 1/4" (997)	39 23/32" (1010)	39 23/32" (1010)	36 9/16" (929)
40	47 1/2" (1207)	45 1/4" (1149)	45 23/32" (1163)	45 23/32" (1163)	42 9/16" (1081)
Height					
20	23 1/2" (597)	11" (279)	11 1/8" (283)	21 15/16" (557)	8 5/16" (211)
26	29 1/2" (749)	14" (356)	14 1/8" (359)	27 15/16" (710)	11 5/16" (287)
30	35 1/2" (851)	17" (432)	17 1/8" (435)	33 15/16" (862)	14 5/16" (364)
36	41 1/2" (1054)	20" (508)	20 1/8" (511)	39 15/16" (1014)	17 5/16" (440)
40	47 1/2" (1207)	23" (584)	23 1/8" (587)	45 15/16" (1167)	20 5/16" (516)
46	53 1/2" (1359)	26" (660)	26 1/8" (664)	51 15/16" (1319)	23 5/16" (592)
50	59 1/2" (1511)	29" (737)	29 1/8" (740)	57 15/16" (1472)	26 5/16" (668)
56	65 1/2" (1664)	32" (813)	32 1/8" (816)	63 15/16" (1624)	29 5/16" (745)
60	71 1/2" (1816)	35" (889)	35 1/8" (892)	69 15/16" (1776)	32 5/16" (821)
66	77 1/2" (1969)	38" (965)	38 1/8" (994)	75 15/16" (1929)	35 5/16" (897)

Picture/Transom Sash			
Width			
Unit CN	Frame OM	Sash OM	DLO
16	17 1/2" (445)	15 1/4" (387)	12 9/16" (319)
20	23 1/2" (597)	21 1/4" (540)	18 9/16" (471)
26	29 1/2" (749)	27 1/4" (692)	24 9/16" (624)
28	31 1/2" (800)	29 1/4" (743)	26 9/16" (675)
30	35 1/2" (902)	33 1/4" (845)	30 9/16" (776)
36	41 1/2" (1054)	39 1/4" (997)	36 9/16" (929)
40	47 1/2" (1207)	45 1/4" (1149)	42 9/16" (1081)
50	59 1/2" (1511)	57 1/4" (1454)	54 9/16" (1691)
60	71 1/2" (1816)	69 1/4" (1759)	66 9/16" (1691)
Height			
10	11 1/2" (292)	9 1/4" (235)	6 9/16" (167)
16	17 1/2" (445)	15 1/4" (387)	12 9/16" (319)
20	23 1/2" (597)	21 1/4" (540)	18 9/16" (471)
26	29 1/2" (749)	27 1/4" (692)	24 9/16" (624)
30	35 1/2" (851)	33 1/4" (845)	30 9/16" (776)
36	41 1/2" (1054)	39 1/4" (997)	36 9/16" (929)
40	47 1/2" (1207)	45 1/4" (1149)	42 9/16" (1081)
46	53 1/2" (1359)	51 1/4" (1302)	48 9/16" (1233)
50	59 1/2" (1511)	57 1/4" (1454)	54 9/16" (1386)
56	65 1/2" (1664)	63 1/4" (1607)	60 9/16" (1538)
60	71 1/2" (1816)	69 1/4" (1759)	66 9/16" (1961)
66	77 1/2" (1969)	75 1/4" (1911)	72 9/16" (1843)

Use this chart to determine sizes for replacement sash and screen.

- Daylight Opening (DLO) is a measurement of the visible glass.
- Outside measurement = OM
- Sizes for Double Hung manufactured 03/26/2007 - present

Operator Sash - Cottage Units					
Width					
Unit CN	Frame OM	Sash OM	1/2 Screen OM	Full Screen OM	DLO
16	17 1/2" (445)	15 1/4" (387)	15 23/32" (401)	15 23/32" (401)	12 9/16" (319)
20	23 1/2" (597)	21 1/4" (540)	21 23/32" (553)	21 23/32" (553)	18 9/16" (471)
26	29 1/2" (749)	27 1/4" (692)	27 23/32" (629)	27 23/32" (629)	24 9/16" (624)
28	31 1/2" (800)	29 1/4" (743)	29 23/32" (736)	29 23/32" (736)	26 9/16" (675)
30	35 1/2" (902)	33 1/4" (845)	33 23/32" (706)	33 23/32" (706)	30 9/16" (776)
36	41 1/2" (1054)	39 1/4" (997)	39 23/32" (1010)	39 23/32" (1010)	36 9/16" (929)
40	47 1/2" (1207)	45 1/4" (1149)	45 23/32" (1163)	45 23/32" (1163)	42 9/16" (1081)
Height					
26 top	29 1/2" (749)	11 17/32" (279)		27 15/16" (710)	8 13/16" (224)
26 btm		16 15/32" (419)	16 19/32" (422)		13 25/32" (350)
30 top	35 1/2" (851)	13 29/32" (354)		33 15/16" (862)	11 7/32" (285)
30 btm		20 3/32" (510)	20 7/32" (513)		17 13/32" (442)
36 top	41 1/2" (1054)	16 5/16" (415)		39 15/16" (1014)	13 5/8" (346)
36 btm		23 11/16" (602)	23 13/16" (605)		21" (533)
40 top	47 1/2" (1207)	18 23/32" (475)		45 15/16" (1167)	16 1/32" (407)
40 btm		27 9/32" (693)	27 13/32" (696)		24 19/32" (625)
46 top	53 1/2" (1359)	21 1/8" (536)		51 15/16" (1319)	18 7/16" (468)
46 btm		30 7/8" (785)	31" (788)		28 3/16" (716)
50 top	59 1/2" (1511)	23 17/32" (597)		57 15/16" (1472)	20 13/16" (529)
50 btm		34 15/32" (876)	34 19/32" (879)		31 25/32" (808)
56 top	65 1/2" (1664)	25 29/32" (660)		63 15/16" (1624)	23 7/32" (590)
56 btm		38 3/32" (967)	38 7/32" (971)		35 13/32" (899)
60 top	71 1/2" (1816)	28 5/16" (719)		69 15/16" (1776)	25 5/8" (651)
60 btm		40 3/32" (1019)	41 13/16" (1062)		39" (990)
66 top	77 1/2" (1969)	30 23/32" (780)		75 15/16" (1929)	28 1/32" (712)
66 btm		45 9/32" (1150)	45 13/32" (1153)		42 19/32" (1082)

Use this chart to determine sizes for replacement sash and screen.

- Daylight Opening (DLO) is a measurement of the visible glass.
- Outside measurement = OM
- Sizes for Double Hung manufactured 03/26/2007 - present

Operator Sash - Reverse Cottage Units					
Width					
Unit CN	Frame OM	Sash OM	1/2 Screen OM	Full Screen OM	DLO
16	17 1/2" (445)	15 1/4" (387)	15 23/32" (401)	15 23/32" (401)	12 9/16" (319)
20	23 1/2" (597)	21 1/4" (540)	21 23/32" (553)	21 23/32" (553)	18 9/16" (471)
26	29 1/2" (749)	27 1/4" (692)	27 23/32" (629)	27 23/32" (629)	24 9/16" (624)
28	31 1/2" (800)	29 1/4" (743)	29 23/32" (736)	29 23/32" (736)	26 9/16" (675)
30	35 1/2" (902)	33 1/4" (845)	33 23/32" (706)	33 23/32" (706)	30 9/16" (776)
36	41 1/2" (1054)	39 1/4" (997)	39 23/32" (1010)	39 23/32" (1010)	36 9/16" (929)
40	47 1/2" (1207)	45 1/4" (1149)	45 23/32" (1163)	45 23/32" (1163)	42 9/16" (1081)
Height					
26 (top)	29 1/2" (749)	16 15/32" (419)		27 15/16" (710)	13 25/32" (350)
26 (btm)		11 17/32" (279)	11 21/32" (296)		8 13/16" (224)
30 (top)	35 1/2" (851)	20 3/32" (510)		33 15/16" (862)	17 13/32" (442)
30 (btm)		13 29/32" (354)	14 1/32" (357)		11 7/32" (285)
36 (top)	41 1/2" (1054)	23 11/16" (602)		39 15/16" (1014)	21" (533)
36 (btm)		16 5/16" (415)	16 7/16" (418)		13 5/8" (346)
40 (top)	47 1/2" (1207)	27 9/32" (693)		45 15/16" (1167)	24 19/32" (625)
40 (btm)		18 23/32" (475)	18 27/32" (479)		16 1/32" (407)
46 (top)	53 1/2" (1359)	30 7/8" (785)		51 15/16" (1319)	28 3/16" (716)
46 (btm)		21 1/8" (536)	21 1/4" (540)		18 7/16" (468)
50 (top)	59 1/2" (1511)	34 15/32" (876)		57 15/16" (1472)	31 25/32" (808)
50 (btm)		23 17/32" (597)	23 21/32" (601)		20 13/16" (529)
56 (top)	65 1/2" (1664)	38 3/32" (967)		63 15/16" (1624)	35 5/16" (897)
56 (btm)		25 29/32" (658)	26 1/32" (661)		23 5/16" (592)
60 (top)	71 1/2" (1816)	40 3/32" (1019)		69 15/16" (1624)	39" (990)
60 (btm)		28 5/16" (719)	28 7/16" (772)		25 5/8" (651)
66 (top)	77 1/2" (1969)	45 9/32" (1150)		75 15/16" (1929)	42 19/32" (1082)
66 (btm)		30 23/32" (780)	30 27/32" (783)		28 1/32" (712)