

BEAUTY MEETS DURABILITY



Five Collections. One Legacy of Innovation.

Realize your unique vision, down to the last detail, with Marvin.

Born out of a legacy of innovation, the Marvin portfolio sets the highest standards in quality you can see and feel. Each premium collection blends inspired design and materials that perform.

Through expertly crafted architectural detailing, industry-leading engineering, and true partnership, Marvin helps open up a world of possibilities.

MARVIN
ULTIMATE™
COLLECTION



Endless Possibilities

Realize unique visions with endless design possibilities, each meticulously crafted.

INTERIORS

Wood

Six species options + custom, two painted or primed options, six stains + Clear Coat

EXTERIORS

Extruded Aluminum

19 colors + custom

Wood

Three species + custom

SIZING

Standard + custom sizing for replacement, remodeling, or new construction

HARDWARE

Extensive selection including Marvin Gallery Hardware

COASTAL + WATERFRONT

Hurricane Impact Zones 3 (IZ3) + Performance Grade 50 products (PG50)

MARVIN
MODERN™
COLLECTION



Authentically Modern

Achieve authentic modern architecture with expansive views and strong thermal performance.

INTERIORS

Extruded Aluminum

Five color options

EXTERIORS

High-Density Fiberglass

Five color options

SIZING

Custom sizing for remodeling or new construction

HARDWARE

Minimalist hardware for modern design aesthetic

COASTAL + WATERFRONT

Not available with Impact Zone (IZ) rating

MARVIN
VIVID™
COLLECTION



Boldly Innovative

Complement transitional to contemporary architecture with dramatic sizes, durability, and energy efficiency.

INTERIORS

Fiberglass Reinforced Composite

Windows: Two color options

Ultrrex Fiberglass

Doors: Two color options

EXTERIORS

Ultrrex Fiberglass

Four color options

SIZING

Standard + custom sizing for replacement, remodeling, or new construction

HARDWARE

Available in four finish options with two door handle styles

COASTAL + WATERFRONT

Not available with Impact Zone (IZ) rating

MARVIN
ELEVATE®
COLLECTION



Beauty Meets Durability

Find the most in-demand traditional window and door types with natural wood interiors and Ultrrex® fiberglass exteriors.

INTERIORS

Wood

Bare Pine, painted Designer Black, painted White, or Clear Coat

EXTERIORS

Ultrrex Fiberglass

Six color options

SIZING

Standard + custom sizing for replacement, remodeling, or new construction

HARDWARE

Available in six finish options with two door handle styles

COASTAL + WATERFRONT

Hurricane Impact Zone 3 (IZ3) + Performance Grade 50 products (PG50)

MARVIN
ESSENTIAL®
COLLECTION



Streamlined Design

Choose from a streamlined selection featuring proprietary Ultrrex fiberglass interiors and exteriors.

INTERIORS

Ultrrex Fiberglass

Four color options

EXTERIORS

Ultrrex Fiberglass

Six color options

SIZING

Standard + custom sizing for replacement, remodeling, or new construction

HARDWARE

Available in six finish options with one door handle style

COASTAL + WATERFRONT

Not available with Impact Zone (IZ) rating



Table of Contents

COLLECTION	04 Marvin Elevate® Collection
	06 Ultrex® Fiberglass
	10 Designed for Pros
WINDOWS	12 Windows Introduction
	14 Casement
	16 Awning
	18 Double Hung
	20 Glider
	22 Picture
	24 Bay
	26 Bow
	28 Round Top
	30 Specialty Shapes
DOORS	32 Doors Introduction
	34 Bi-Fold
	36 Sliding Patio
	38 Sliding French
	40 Swinging French
OPTIONS	42 Options Introduction
	44 Interior + Exterior Finish Options
	46 Hardware + Exterior Trim
	48 Glass + Divided Lites
	49 Simulated Checkrails + Accessibility
	50 IZ3 Products for Coastal Living
	51 Simple + Efficient Installation

DOUBLE HUNG WINDOWS
Painted White

MARVIN
ELEVATE®
COLLECTION

The Perfect Balance of Beauty and Strength

Balancing beautiful design with superior strength, the Marvin Elevate collection delivers style in any climate. Elevate features warm wood interiors that can blend in or stand out with Ultrex® fiberglass exteriors for lasting durability. The collection offers a range of carefully selected features and options, making it as versatile as it is elegant.

LONG-LASTING STRENGTH + BEAUTY

DURABLE FINISHES

CURATED CHOICES

CASEMENT WINDOWS
Gunmetal



Ultrex Fiberglass Exteriors

Ultrex® fiberglass is a unique, proprietary material that significantly outlasts and outperforms vinyl and vinyl/wood composite materials while offering unmatched durability and timeless style. This state-of-the-art material was developed by Marvin and is featured on the exteriors of the Marvin Elevate® collection.

Marvin uses Ultrex fiberglass because the material you choose for your windows matters. Ultrex is strong, stable, has a durable acrylic finish, and is energy efficient.

Strength

The strength of Ultrex fiberglass translates into long-term ease of operation, minimal maintenance, and superior performance.

Stability

By expanding and contracting at nearly the same rate as glass, Marvin windows and doors made with Ultrex fiberglass are more resistant to leaks and seal failures.

Finish

The proprietary acrylic finish is 3x thicker than competitive painted options, and resistant to chipping, chalking, or fading.

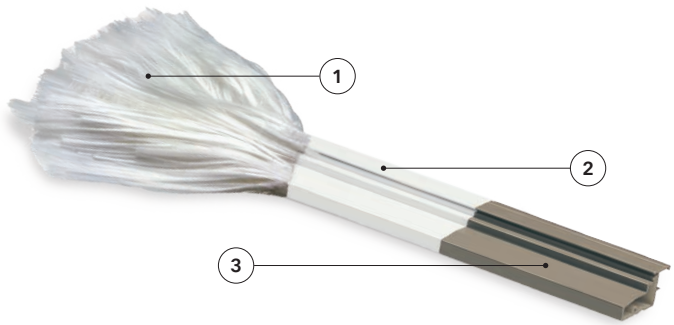
Energy Efficiency

Ultrex fiberglass combined with energy-efficient glass options can help manage the amount of light and heat entering and leaving your home.



How It's Made

Ultrex fiberglass is a composite material made of fine glass fibers woven into a cloth then bonded together with a formulated polyester resin. The continuous strands of fiberglass give Ultrex its strength in resisting breakage.



1

Raw Fiberglass Strands

Thin strands of strong glass cables are saturated with specifically compounded resins.

2

Pultruded Fiberglass

The strands are pulled through a heated die and cut with diamond-edged blades to form Ultrex fiberglass.

3

Proprietary Acrylic Finish

A proprietary acrylic finish is then applied; it's smoother and 3x thicker than other brands.

Strength Matters

Ultrex fiberglass is 8x stronger than vinyl and has a low thermal expansion rate. It is heat resistant, non-corrosive, and has low conductivity.

Ultrex fiberglass bends and flexes less than vinyl. This helps maintain the window seals and operation year after year.

The strength of Ultrex fiberglass allows for a reduced frame thickness that supports more visible glass, creating a larger view.

Durable material weathers better against everyday wear and stands the test of time.

ULTREX FIBERGLASS IS

8x

stronger than vinyl

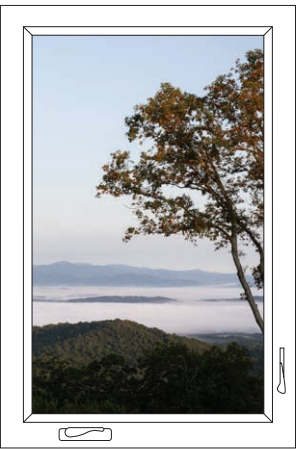
3x

stronger than Fibrex®



More Glass, More Value

This resistance to bending means we can reduce the frame thickness without impacting the window's structural integrity. This allows for more glass, expansive views and daylight openings, and less window frame.



Ultrex fiberglass provides larger views



Thicker vinyl profiles can restrict views

Stability You Can Count On

Constant expansion and contraction can gradually break down windows and doors, causing leaky seals, poor operation, and loss of structural integrity.

Ultrex® fiberglass expands and contracts at virtually the same rate as glass, so Marvin Elevate® windows and doors stay tight and true over time, resisting air leaks, seal failures, and stress cracks that can compromise energy efficiency and long-term performance.

This low rate of expansion and contraction also allows windows and doors to open and close on demand without sticking or binding from swelling, warping, material distortion, or deformation from the heat.

A Long-Term Finish

Marvin Ultrex fiberglass finish is verified to the American Architectural Manufacturers Association (AAMA) 624 specification. Achieving AAMA 624 verification means that our finish has passed rigorous tests that simulate the harsh conditions encountered throughout the life of a window or door.

Ultrex fiberglass uses an acrylic finish that is paintable, fade resistant, and virtually maintenance free. With a finish that’s 3x thicker than competitive painted options, it resists chipping, denting, and peeling.

ULTREX FIBERGLASS HAS

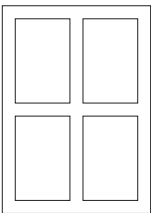
75%

less expansion than Fibrex®

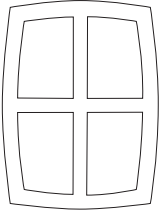
87%

less expansion than vinyl

IN EXTREME WEATHER CONDITIONS



Ultrex fiberglass stays true



Vinyl can expand

Lasting Performance

Proprietary Ultrex fiberglass finish resists scratches, chalking, and fading—even in dark colors

Exteriors can be painted to match any home

Virtually maintenance free – no sanding, scraping, or painting care needed

Finish is 3x thicker than competitive painted options

Energy Efficiency

The low thermal conductivity and superior performance of Ultrex fiberglass combine with a selection of energy-efficient glazing (glass) options that help manage the amount of light and heat entering and leaving your home.

Top-Rated Efficiency

Windows and doors with low conductivity reduce heat loss in homes, which translates to lower energy bills.* Ultrex fiberglass provides an insulated barrier against extreme weather temperatures, keeping homes comfortable and reducing heating and cooling costs.

Energy Savings

Low-E glass coatings are designed to reflect heat, keeping homes cooler in the summer and warmer on winter nights while also blocking harmful UV rays and reducing energy costs.

Low-E coatings have three main functions:

Insulation (energy efficiency)

By reflecting heat, the coating significantly reduces solar heat gain in summer and heat loss in winter, helping to maintain a stable indoor temperature.

Solar Control (heat gain reduction)

In warm weather, the coating reflects short-wave infrared energy from the sun away from the building, which helps keep indoor spaces cooler by blocking solar heat gain.

UV Protection (reduces UV damage)

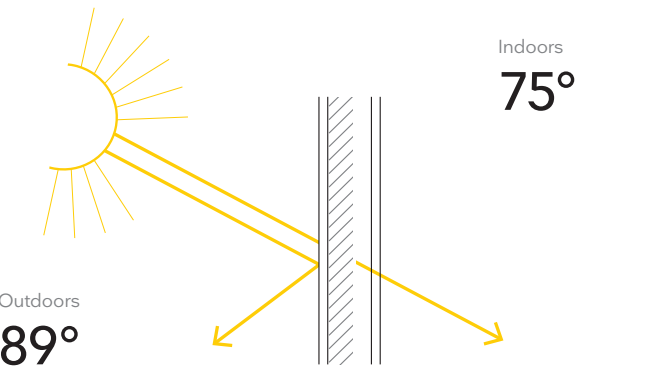
The coating reduces a significant percentage of harmful UV rays, helping prevent fading of furniture, rugs, and other interiors.

* Replacing old windows with ENERGY STAR certified windows lowers household energy bills by an average of up to 13% nationwide when replacing single-pane windows. Lower energy consumption also reduces greenhouse gas emissions from power plants and homes.
https://www.energystar.gov/products/res_windows_doors_skylights



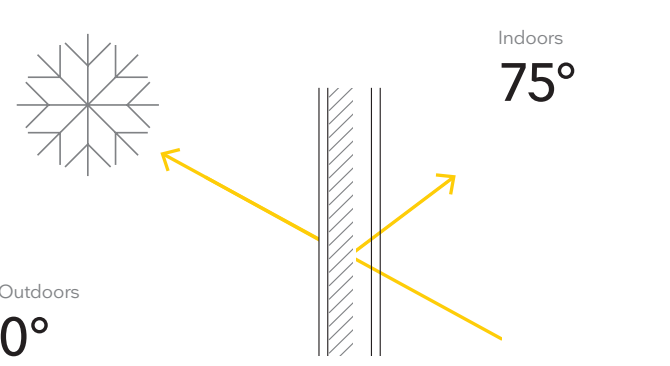
SUMMER DAY

LOW-E GLAZING



WINTER NIGHT

LOW-E GLAZING



Designed With Pros in Mind

Every project has its own unique requirements, and Marvin is equipped to meet those challenges. Our unique Ultrex® fiberglass material, available factory services, and network of dedicated service and support personnel make the Marvin Elevate® collection the perfect choice – no matter the project.

fig. 1 DIRECT GLAZE WINDOWS
Ebony

fig. 2 DOUBLE HUNG, DIRECT GLAZE
WINDOWS, SLIDING FRENCH DOOR
Stone White



Easy to Order, Simple to Install

The Elevate collection offers simplified options to make the order process straightforward. Installation options and accessories make installing Marvin easier than ever.



fig. 1

Full Warranty Coverage

A family-owned and -led company with a legacy of innovation since 1912, Marvin backs its products with industry-leading warranties. The Elevate collection is backed by a fully transferable 20/10 warranty, 20-year coverage on glass, and 10-year coverage on manufacturing materials and workmanship.



fig. 2

Windows

More flexibility to meet any design challenge. The Marvin Elevate® collection has an extensive selection of styles, sizes, shapes, and options.

—
AWNING, CASEMENT,
DIRECT GLAZE WINDOWS
Gunmetal



Light-Filled Hingham Harbor Home

Expansive windows and doors helped this architect achieve her goal of maximizing natural light while also bringing the outdoors into her family's home. Learn more on the Marvin Inspiration blog.



marvin.com/hingham-harbor

Casement

The Marvin Elevate® Casement window is side hinged and built for smooth operation with a concealed multi-point locking system. Casement windows create a tight seal on all four sides, meaning fewer opportunities for air leaks.

- fig. 1* **CASEMENT WINDOWS**
Painted Designer Black
- fig. 2* **INTERIOR VIEW**
Bare Pine
- fig. 3* **EXTERIOR VIEW**
Gunmetal
- fig. 4* **CASEMENT WINDOW**
Painted White



fig. 1



fig. 2

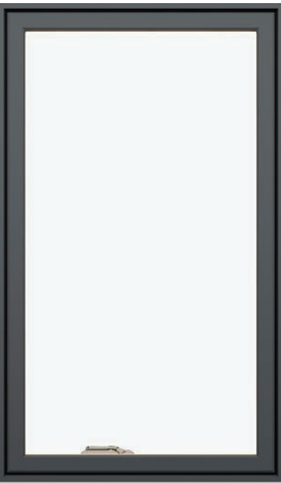


fig. 3



fig. 4

FEATURES

- Offers traditional style and durability with a low-maintenance Ultrex® fiberglass exterior and warm wood interior
- Available in standard and special sizes up to 3' wide by 6' high
- Multi-point sequential locking system provides superior PG50 performance rating with single lever operation
- Coordinating picture and transom windows also available
- Narrow frame option with 3-1/4" insert replacement frame, flat sill, and through-jamb installation
- Folding handle neatly stows out of the way; stainless steel coastal hardware available
- Interior screen features an aluminum surround and concealed pressure mounting points for ease of operation and enhanced aesthetics
- Available with Hurricane Impact Zone 3 (IZ3) protection (excludes narrow frame option)

Awning

Bring fresh air into hard-to-reach areas, such as over a sink or counter, with the Marvin Elevate® Awning window. Awning windows open outward from the bottom, bringing in ventilation while shielding your interior spaces from rain.

- fig. 1 **AWNING WINDOWS**
Pine, Clear Coat
- fig. 2 **INTERIOR VIEW**
Bare Pine
- fig. 3 **EXTERIOR VIEW**
Gunmetal
- fig. 4 **AWNING WINDOW**
Designer Black



fig. 1



fig. 2



fig. 3



fig. 4

FEATURES

Offers traditional style and durability with a low-maintenance Ultrex® fiberglass exterior and warm wood interior

Available in standard and special sizes up to 4' wide by 4' high

Multi-point sequential locking system provides superior PG50 performance rating with single lever operation

Coordinating picture and transom windows also available

Narrow frame option with 3-1/4" wide insert replacement frame, flat sill, and through-jamb installation

Folding handle neatly stows out of the way; stainless steel coastal hardware available

Interior screen features an aluminum surround and concealed pressure mounting points for ease of operation and enhanced aesthetics

Available with Hurricane Impact Zone 3 (IZ3) protection (excludes narrow frame option)

Double Hung

The Marvin Elevate® Double Hung window offers a traditional look along with superior strength. Two movable sashes create ventilation at the top, bottom, or both. Tilt the sashes in or remove for easy cleaning.



fig. 1

- fig. 1 **DOUBLE HUNG WINDOWS**
Painted White
- fig. 2 **INTERIOR VIEW**
Bare Pine
- fig. 3 **EXTERIOR VIEW**
Gunmetal
- fig. 4 **DOUBLE HUNG WINDOWS**
Stone White



fig. 2



fig. 3



fig. 4

FEATURES

Offers traditional style and durability with a low-maintenance Ultrex® fiberglass exterior and warm wood interior

Available in standard and special sizes up to 4'6" wide by 7' high

Up to PG50 performance rating; available with Hurricane Impact Zone 3 (IZ3) protection (excludes insert option)

Tilt latches are ergonomically designed and easy to operate, making tilting and cleaning effortless

Sash lock engages noticeably, reassuring the user that the window is either locked or unlocked

Coordinating picture and transom windows also available

Equal, Cottage, and Reverse Cottage sash provide a variety of looks and checkrail heights

Double Hung Insert option features ¾" insert replacement frame with through-jamb installation and up to PG40 performance rating

Equipped with a standard full screen; optional half screen is available

Glider

The Marvin Elevate® Glider window offers a space-saving alternative when a swinging sash won't fit. Dual and triple sash options create an easy-to-use, versatile window.

- fig. 1* **GLIDER WINDOW**
Painted Designer Black
- fig. 2* **INTERIOR VIEW**
Bare Pine
- fig. 3* **EXTERIOR VIEW**
Gunmetal
- fig. 4* **GLIDER WINDOW**
Painted White



fig. 1



fig. 2



fig. 4



fig. 3

FEATURES

Offers traditional style and durability with a low-maintenance Ultrex® fiberglass exterior and warm wood interior

Available in standard and special sizes up to 6' wide by 5' high for dual sash; 8' wide by 5' high for triple sash

Up to PG30 performance rating

Available in dual sash with left or right operating panel, as well as triple sash with fixed center panel and two operating end panels

Operating sash easily tilts and removes with no cords or strings to detach

Tilt latches are ergonomically designed and easy to operate, making tilting and cleaning effortless

Innovative screen design for easy installation and removal

Picture

The Marvin Elevate® Picture window is a stationary option available in two types—direct glaze and in-sash—to meet various design needs. This fixed window is an ideal complement to operable windows in the Elevate collection.

- fig. 1* **DIRECT GLAZE WINDOWS**
Stained Pine
- fig. 2* **INTERIOR VIEW**
Bare Pine
- fig. 3* **EXTERIOR VIEW**
Gunmetal
- fig. 4* **CASEMENT PICTURE, CASEMENT WINDOWS**
Painted Pine



fig. 1



fig. 2



fig. 3



fig. 4

FEATURES

Offers traditional style and durability with a low-maintenance Ultrex® fiberglass exterior and warm wood interior

Available in either in-sash or direct glaze

Choose in-sash style to match profiles of operable windows in the Elevate collection

Choose direct glaze style – where the glass meets the frame directly without a sash – for a simple, clean profile with more glass area

Casement Picture windows available in sizes up to 6' wide by 6' high

Double Hung Picture windows available in sizes up to 5' wide by 7' high

Both in-sash and direct glaze Picture windows available with IZ3 hurricane rating

Bay

Maximize air circulation with the Marvin Elevate® Bay window, a group of three connected windows that extend out at an angle to allow panoramic light and views. Bay windows include a window seat and headboard made from engineered wood for superior strength, stability, and durability.



fig. 1

- fig. 1 **CASEMENT BAY WINDOW**
Painted White
- fig. 2 **INTERIOR VIEW**
Bare Pine
- fig. 3 **EXTERIOR VIEW**
Gunmetal
- fig. 4 **CASEMENT BAY WINDOW**
Stained Pine



fig. 2

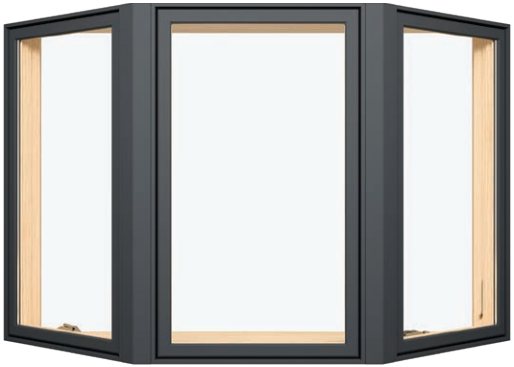


fig. 3



fig. 4

FEATURES

- Offers traditional style and durability with a low-maintenance Ultrex® fiberglass exterior and warm wood interior
- Suit any design style with a combination of Elevate Casement and Elevate Double Hung in operable or stationary configurations
- Available in configurations up to 7' wide by 6' high
- Choose from convenient factory mulling or field mulling kits
- Customize with a variety of glass, divided lites, and hardware options
- Durable low-maintenance, easy-to-remove aluminum surround screens with concealed fasteners

Bow

The Marvin Elevate® Bow window is a series of up to five windows connected to form a gentle outward curve, which can boost visual appeal from inside and out. Create a small nook, open up a view, or simply bring in more daylight with these impressive assemblies. Bow windows include a window seat and headboard made from engineered wood for superior strength, stability, and durability.



fig. 1

- fig. 1 **CASEMENT BOW WINDOW**
Stained Pine
- fig. 2 **INTERIOR VIEW**
Bare Pine
- fig. 3 **EXTERIOR VIEW**
Gunmetal
- fig. 4 **CASEMENT BOW WINDOW**
Painted White



fig. 2

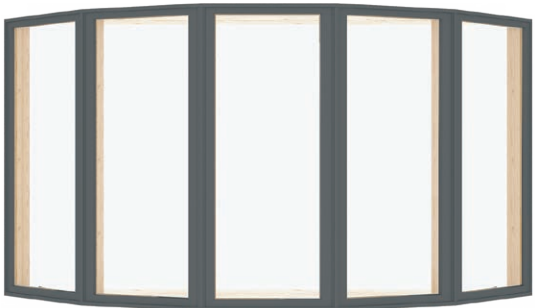


fig. 3



fig. 4

FEATURES

- Offers traditional style and durability with a low-maintenance Ultrex® fiberglass exterior and warm wood interior
- Suit any design style with a combination of Elevate Casement and Elevate Double Hung in operable or stationary configurations
- Available in configurations up to 10' wide by 6' high
- Choose from convenient factory mulling or field mulling kits
- Customize with a variety of glass, divided lites, and hardware options
- Durable low-maintenance, easy-to-remove aluminum surround screens with concealed fasteners

Round Top

The Marvin Elevate® Round Top window offers visual versatility and can complement other windows in the collection. Clean lines and warm wood interiors match various styles, and a low-maintenance extruded aluminum exterior can handle the elements.



fig. 1

- fig. 1 **ROUND TOP WINDOW**
Painted White
- fig. 2 **INTERIOR VIEW**
Bare Pine
- fig. 3 **EXTERIOR VIEW**
Gunmetal
- fig. 4 **ROUND TOP SHAPES**



fig. 2



fig. 3

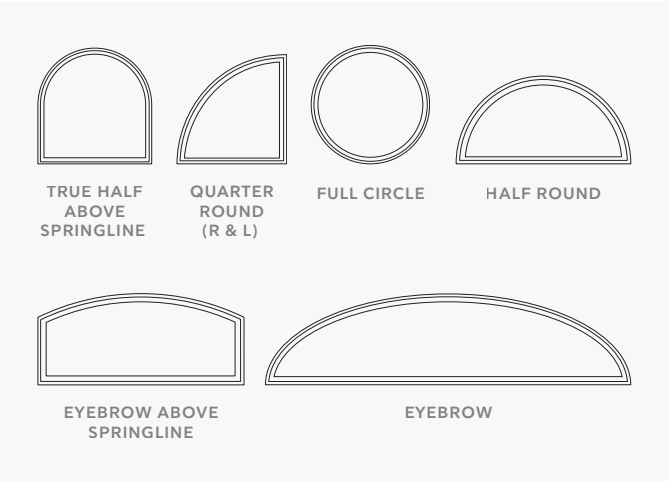


fig. 4

- FEATURES**
- Extruded aluminum exterior finish
 - Standard and special sizes up to 8' wide and up to 6' high depending on the shape
 - Up to PG50 performance rating
 - Available with factory and field mulling options
 - Available nailing fin, installation bracket, and through-jamb installation
 - Perforated folding radius nailing fin provides for simple installation and proper water management

Specialty Shapes

The Marvin Elevate® Specialty Shape window offers flexible options to fit even the most unusual designs and unique spaces. Use Specialty Shape windows as sidelights and transoms – or combine them to create a striking wall of fixed windows.

- fig. 1 **POLYGON WINDOW**
Pine, Clear Coat
- fig. 2 **INTERIOR VIEW**
Bare Pine
- fig. 3 **EXTERIOR VIEW**
Gunmetal
- fig. 4 **SPECIALTY SHAPES**



fig. 1

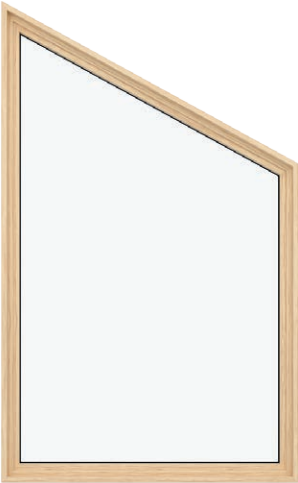


fig. 2

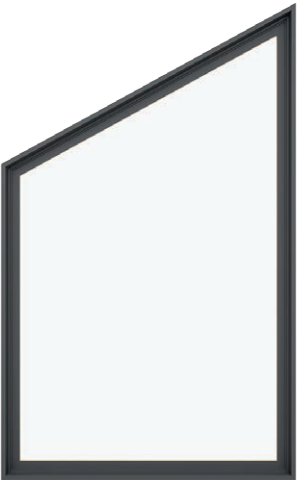


fig. 3

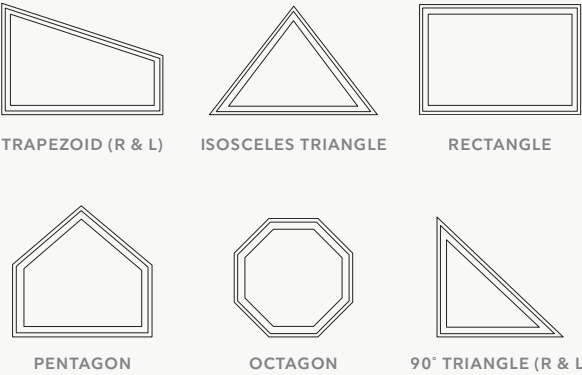


fig. 4

- FEATURES**
- Offers traditional style and durability with a low-maintenance Ultrex® fiberglass exterior and warm wood interior
 - Available in sizes up to 49 square feet; longest leg may not exceed 9'
 - Up to PG55 performance rating
 - Standard jambs of 4-⁹/₁₆", 6-⁹/₁₆", and 6-¹³/₁₆" are available factory applied or as an extension kit
 - Factory, reinforced, and field mulling kits available
 - ENERGY STAR® certified and available with Low E1, Low E2, Low E2/ERS, Low E3, and Low E3/ERS insulated glass

Doors

Showcase views and infuse your home with natural light and fresh air, thanks to the durable door options in the Marvin Elevate® collection.

MARVIN ELEVATE
BI-FOLD DOOR
Ebony



Natural Light Boosts Creativity in This Home for Musicians

Designed for a tight-knit family of musicians, the Unbridled Path home encourages play, creativity, and connectivity by illuminating the power of natural light. Learn more on the Marvin Inspiration blog.



marvin.com/unbridled-path

Bi-Fold

The Marvin Elevate® Bi-Fold door effortlessly glides and stacks open so you can enjoy scenic views and invite maximum airflow into your home. When completely closed, the door is designed with narrow profiles to fill your home with light.

fig. 1 **BI-FOLD DOOR**
Ebony

fig. 2 **INTERIOR VIEW**
Bare Pine

fig. 3 **EXTERIOR VIEW**
Gunmetal

fig. 4 **BI-FOLD DOOR**
Pine, Clear Coat



fig. 2



fig. 4



fig. 1



fig. 3

FEATURES

Available in configurations up to seven panels, fitting openings up to 22' wide by 8' high

Choose from 28 operating configurations

Integrated multi-point locking system

Divided lites available: Grilles-Between-the-Glass (GBG) or Simulated Divided Lites (SDL)

Carefully engineered top-hung design for effortless operation

Performance sill available in Beige or Bronze

Retractable pleated screen option available

Sliding Patio

The Marvin Elevate® Sliding Patio door delivers contemporary lines and more glass to prioritize views and allow for effortless operation.



fig. 1

- fig. 1 **SLIDING PATIO DOOR**
Pine, Clear Coat
- fig. 2 **INTERIOR VIEW**
Bare Pine
- fig. 3 **EXTERIOR VIEW**
Gunmetal
- fig. 4 **SLIDING PATIO DOOR**
Bronze



fig. 2



fig. 3



fig. 4

FEATURES

- Offers traditional style and durability with a low-maintenance Ultrex® fiberglass exterior and warm wood interior
- Narrow stiles and rails achieve contemporary styling
- Precision built in 1/64" increments
- Configurations of two, three, or four panels, up to approximately 16' wide by 8' high
- Up to PG40 performance rating
- Top-hung screen operates smoothly without jamming
- Coordinating transom windows available
- Sill available in Beige or Bronze

Sliding French

The Marvin Elevate® Sliding French door combines the wider side stiles and top rails of a French door with the space-saving design of a sliding door.



fig. 1

- fig. 1 **SLIDING FRENCH DOOR**
Painted Designer Black
- fig. 2 **INTERIOR VIEW**
Bare Pine
- fig. 3 **EXTERIOR VIEW**
Gunmetal
- fig. 4 **SLIDING FRENCH DOOR**
Painted Designer Black



fig. 2



fig. 3



fig. 4

FEATURES

Offers traditional style and durability with a low-maintenance Ultrex® fiberglass exterior and warm wood interior

Wide stile and rail construction showcases the rich wood interior

Configurations of two, three, or four panels, up to approximately 16' wide by 8' high

Up to PG40 performance rating

Optional PG50 performance rating on two- and three-panel configurations up to 9' wide by 8' high

Dual ball bearing rollers for smooth operation

Sill available in Beige or Bronze

Swinging French

The Marvin Elevate® Swinging French door is available with inswing or outswing options to meet design and weather constraints. Choose inswing design for doors that open over steps or are exposed to the elements, and outswing for locations with limited interior space or where opening inward would interrupt the interior flow.



fig. 1

- fig. 1 **SWINGING FRENCH DOOR**
Painted Designer Black
- fig. 2 **INTERIOR VIEW**
Bare Pine
- fig. 3 **EXTERIOR VIEW**
Gunmetal
- fig. 4 **SWINGING FRENCH DOOR**
Painted Designer Black

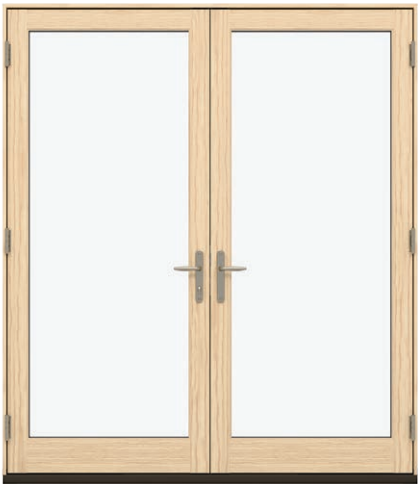


fig. 2

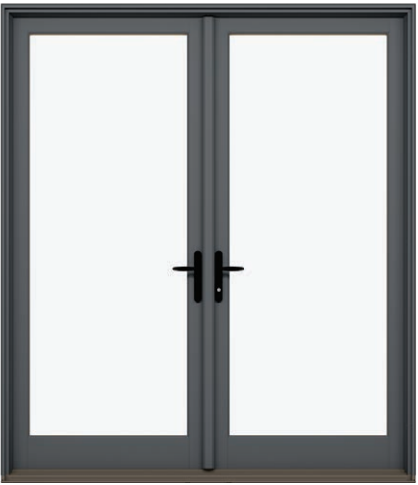


fig. 3



fig. 4

FEATURES

Offers traditional style and durability with a low-maintenance Ultrex® fiberglass exterior and warm wood interior

Available in one-, two-, or three-panel configuration.*
Available in multiple configurations up to 9' wide by 8' high.

Up to PG30 performance rating standard; up to PG50 high-performance rating on one- and two-panel configurations

Precision built in 1/4" increments

Fiberglass sill stands up to foot traffic and weather; available in Beige or Bronze

Secure and stable stainless steel multi-point locking system ensures a tight seal and security from top to bottom

Tempered, insulated glass with argon gas

Available with Hurricane Impact Zone 3 (IZ3) protection

* Three-panel configuration is achieved by mulling multiple frames together to create an assembly.

Options

MARVIN ELEVATE® DOUBLE HUNG
WINDOWS, SLIDING FRENCH DOOR
Painted White



Interior Finish Options

Wood

The Marvin Elevate® collection features rich Pine interiors that can be stained to match your interiors, or finished in our factory with a clear coat, Painted Designer Black, or Painted White finish.

Factory finishing means you can expect consistent quality and aesthetics that come from our carefully perfected finishing process.



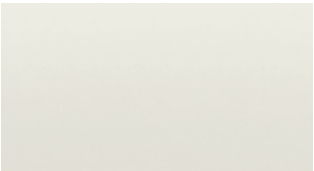
WOOD INTERIOR COLORS



BARE PINE
Wood comes bare and ready to be painted or stained



CLEAR COAT
Wood is finished in the factory with a clear coat



PAINTED WHITE



PAINTED DESIGNER BLACK

Exterior Finish Options

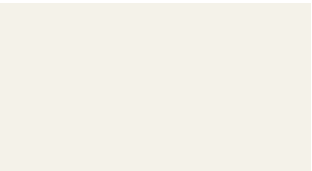
Ultrex Fiberglass

Elevate windows and doors have a durable, strong Ultrex® fiberglass exterior, featuring our AAMA-verified acrylic finish for low maintenance and superior aesthetics.

Built for durability and minimal maintenance, our Ultrex fiberglass finish is 3x thicker than competitive painted finishes, with a smooth consistency and evenly distributed finish that resists fading, chalking, peeling, and cracking, even in the darkest colors. Six colors are available in neutral and dark tones.



FIBERGLASS EXTERIOR COLORS



STONE WHITE



CASHMERE



PEBBLE GRAY



BRONZE



GUNMETAL



EBONY

Hardware Options

Window Hardware

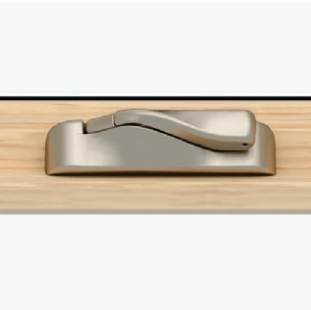
Windows feature classic low-profile durable hardware for clean aesthetics, safety, and security.*

SASH LOCK + KEEPER



Available on Double Hung and Glider windows

FOLDING HANDLE



Available on Casement and Awning windows

Door Handles

Door handles for the Marvin Elevate® collection are available in two distinct hardware collections.

CAMBRIDGE



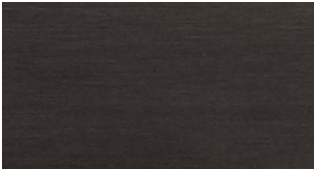
Available keyed-alike option (use one key on multiple locks, with up to three different keys on each project).

Choose a distinct interior and exterior handle finish that matches or complements the interior and exterior color of your door.

NORTHFIELD



HARDWARE FINISH OPTIONS



OIL RUBBED BRONZE (PVD)



MATTE BLACK



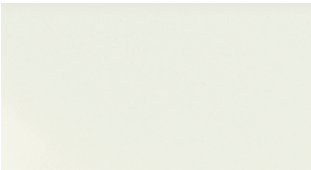
SATIN NICKEL (PVD)



ALMOND FROST



BRASS (PVD)



WHITE

PVD FINISHES

The Physical Vapor Deposition (PVD) process adds a layer of toughness to hardware exposed to environmental factors like direct sun and humidity. PVD finishes resist fading and discoloration, even in coastal areas. PVD has the highest grade corrosion-resistant finish. PVD finish is available on exterior door hardware in Oil Rubbed Bronze, Satin Nickel, and Brass.

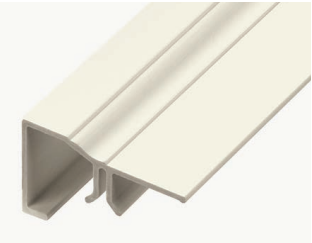
* For more options, visit marvin.com

Exterior Trim Options

Ultrex® fiberglass exterior trim is offered with all Marvin Elevate products in all finish colors. The durability, performance, and look of windows and doors can be extended to the trim. Multiple configurations are available in lineal lengths and factory pre-cut kits in all six Elevate exterior colors.

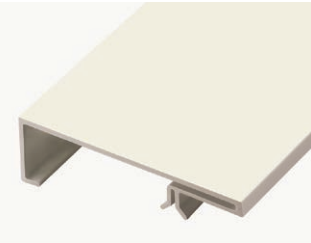


EXTERIOR TRIM OPTIONS



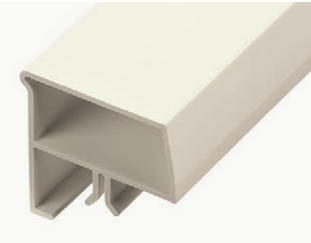
Brick Mould

2" Brick Mould is available with or without 2-1/8" sill nosing.



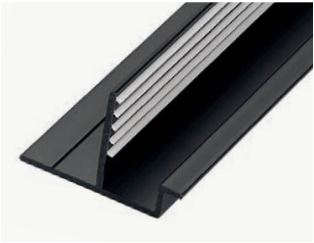
Flat Trim

3-1/2" Flat Trim is available in Flat and Flat Ranch configurations with or without 2-1/8" sill nosing.



Sill Nose

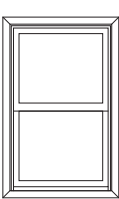
2-1/8" Sill Nose provides authentic sill appearance.



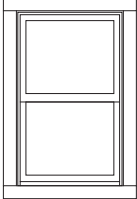
Connection Barb

Barb and receiver attachment method provides for quick, secure installation.

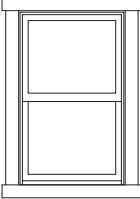
WINDOW TRIM CONFIGURATIONS



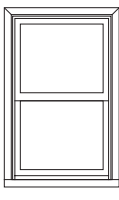
BRICK MOULD



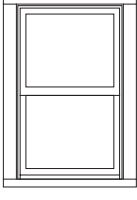
FLAT



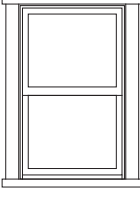
FLAT RANCH



BRICK MOULD WITH SILL NOSE

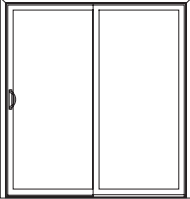


FLAT WITH SILL NOSE

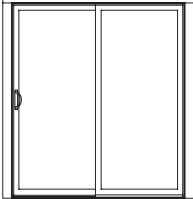


FLAT RANCH WITH SILL NOSE

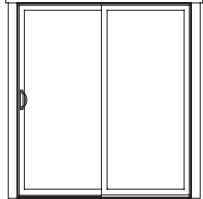
DOOR TRIM CONFIGURATIONS†



BRICK MOULD



FLAT



FLAT RANCH

† Sill profiles are not included for door trim sets

Glass Options

Glass is available with Standard Dual Pane or optional Triple Pane on select Marvin Elevate® products. Available with Low E1, Low E2, Low E2/ERS, Low E3, and Low E3/ERS insulated glass with argon gas.* Options include glazing for sound abatement (STC/OITC), high altitudes, and California fire zones. Laminated glass is also offered in products designed specifically for hurricane zones.

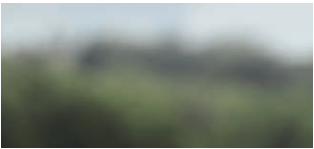
SPECIALTY GLASS OPTIONS



FROSTED



BRONZE TINT



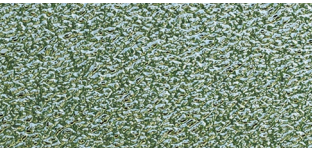
GRAY TINT



GREEN TINT



REED



OBSCURE



GLUE CHIP



RAIN

Divided Lites

The look of multiple individual panes of glass is popular in a wide range of architectural styles. Simulated Divided Lites (SDLs) and Grilles-Between-the-Glass (GBGs) mimic the look of these individual panes of glass without sacrificing energy efficiency. Divided lites available on select Elevate products.

Grilles-Between-the-Glass

GBGs are available in several popular lite cut options for a classic divided lite look and easy glass cleaning.† Available in Ebony, Bronze, and Stone White interior and Stone White, Cashmere, Pebble Gray, Bronze, Gunmetal, or Ebony exterior.



GRILLES-BETWEEN-THE-GLASS



SIMULATED DIVIDED LITE

Simulated Divided Lite

These bars permanently adhere to both sides of the glass for a more authentic look. Available with or without spacer bar and in several lite cut options.†

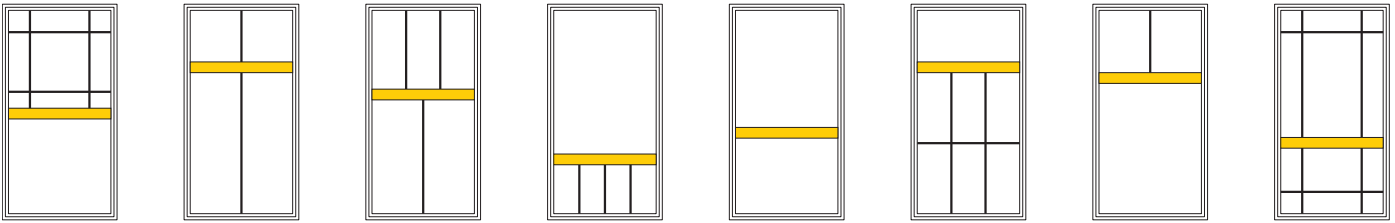
* Argon gas not available in high elevations where capillary tubes are required
† For more options, visit marvin.com

Simulated Checkrails

Simulated checkrails are the perfect solution when aesthetics call for the beauty of a double hung, but operation, egress, or performance demand another solution. Specify placement of the horizontal simulated checkrail bar and the lite cut patterns above and below.

These illustrations offer a sampling of 7/8" SDL patterns that can be selected in combination with the 2-1/2" simulated checkrail on Casement, Awning, Glider, Direct Glaze rectangle, and Picture windows, and all Elevate doors.

SIMULATED CHECKRAIL OPTIONS



Accessibility Options

Window Opening Control Device

Limits opening to 4" while providing for full egress. ASTM F2090 compliant. Available on Casement, Double Hung, and Glider windows.

Sash Limiter

Permanently limits sash movement for safety and security.

ACCESSIBILITY OPTIONS



CASEMENT
Window Opening Control Device



DOUBLE HUNG
Window Opening Control Device



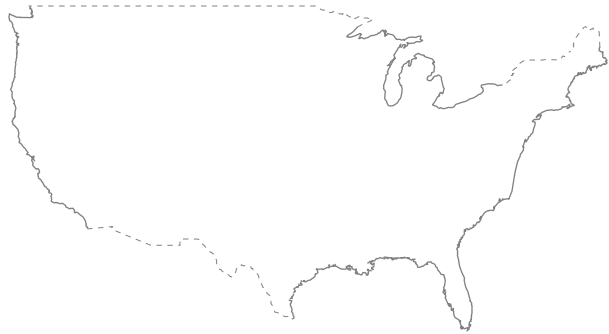
GLIDER
Window Opening Control Device



AWNING
Sash Limiter

IZ3 Products for Coastal Living

Marvin Elevate® IZ3 Certified products are specifically designed for the extreme conditions and construction requirements of coastal areas. Rigorously tested by third-party agencies to meet or exceed the most stringent coastal codes, they protect against flying debris, driving rain, cyclic pressure, and extreme temperatures. The Ultrex® fiberglass finish meets AAMA 624 standards for weathering and fading resistance.



Simple and Efficient Installation

Marvin Elevate windows and doors bring together design, quality, and performance in one streamlined collection. Elevate products offer a number of installation options and accessories that make it easy to meet project demands.



Nailing Fin

Pre-attached folding nailing fin and drip cap for easier installation.

Factory-Applied Jamb Extensions

Factory-applied jamb extensions save time and labor. We supply 4-⁹/₁₆", 6-⁹/₁₆", and 6-¹³/₁₆" jamb depth in bare pine, clear coat finish, painted White, or painted Designer Black.

Factory-Installed Screens

Factory-installed screens are a standard offering with operating windows. At no extra cost, we can ship your screens separately to reduce on-site damage prior to installation.

Corner Keys

Integral corner keys keep window and door units square and corners sealed.

Through-Jamb

Available through-jamb and installation bracket options.

Paintable Exteriors

Ultrex fiberglass exteriors are paintable, and they hold color better than vinyl or vinyl/wood composites.

Factory-Mulled Assemblies

Available standard factory mulling, reinforced factory mulling, or field mulling kits. The reinforced mull meets **AAMA 450 specifications** and performs up to PG50 on standard products and up to PG55 on IZ3 rated products.

Custom Sizes

Custom sizes are available on windows and doors in ¹/₄" increments for the perfect fit every time.



MARVIN ELEVATE®
CASEMENT WINDOWS
Pine, Custom Finish



Since 1912, Marvin has been a family-owned and -led company, with a legacy of innovation and commitment to the highest quality. We understand the unique opportunity windows and doors have to improve our spaces and how we feel in them. That's why we never stop pushing what's possible and inventing new solutions to channel fresh air, enhance light quality, and connect with the world around us.

MARVIN.COM

© 2026 Marvin Lumber and Cedar Co., LLC. All rights reserved.
® Registered trademark of Marvin Lumber and Cedar Co., LLC.

ENERGY STAR® and the ENERGY STAR certification mark are registered US marks.

Fibrex® is a registered trademark of Andersen Corporation.
Fibrex data: Andersen® (2007). Fibrex® Manual: A High Performance, High Value Biofiber Polymer Composite Technology. Renewal by Andersen® (2008). Fibrex® Material: A Better Alternative, A Better Window.

Part 19981914. January 2026.

Cover Image: Marvin Elevate® Casement windows

Colors shown in printed materials are simulations and may not precisely duplicate product or finish colors. Contact your local Marvin dealer to view actual product and finish color samples.