

Marvin Interior Shade for Swinging Door Finishing Instruction

ABSTRACT: The following instruction is for finishing a Marvin Interior Shade on a Swinging Door manufactured after 06/29/2015.

NOTE: Carefully follow Marvin's measuring instructions for shades. Shades may not fit properly if measured incorrectly. Marvin is not responsible for shades that are not measured correctly. Shades are for use only in connection with Marvin® brand windows and doors. Shades are not covered under warranty if used with Integrity®, Infinity®, or any third party manufacturer's product.



WARNING

Always practice safety! Wear the appropriate eye, ear and hand protection, especially when working with power tools.

You Will Need to Supply

Clamps
Small pliers
Phillips screwdriver

NOTE: Numbers listed in parentheses () are metric equivalents in millimeters rounded to the nearest whole number.

1. Remove interior shade surround from unit by sliding interior shade up and pulling away from unit. Compress the shade stack to the lower portion. See figure 1.



Figure 1

2. Remove the #6 x 1/4" screws on back side of pull bar to remove pull bar from fabric adapter if necessary. See figure 2. Remove optional interior shade stack cover if necessary.

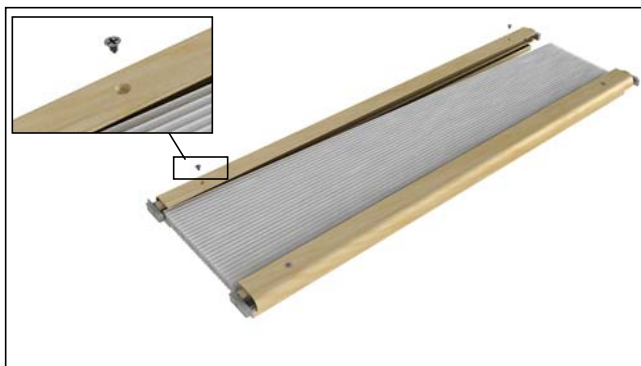


Figure 2

3. Locate springs on header of interior shade system. Unhook both ends of the springs by unhooking both the single chain link and the slide tensioner, and remove the cords from the backside of the interior shade surround by pulling the cords through the end cut of the rail. See figure 3. *Note:* You may need a small pliers to open the link in the chain.

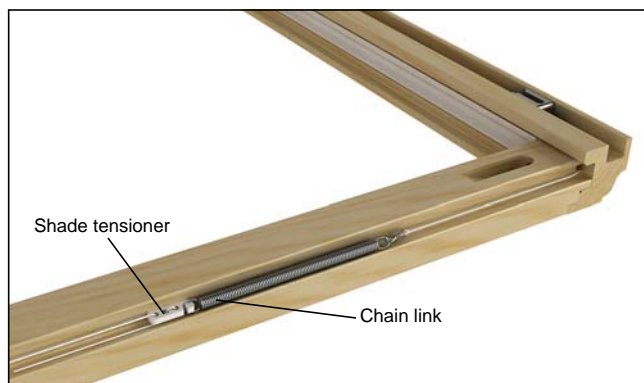


Figure 3

4. Tilt the compressed fabric stack and pull bars out of the surround. See figure 4.

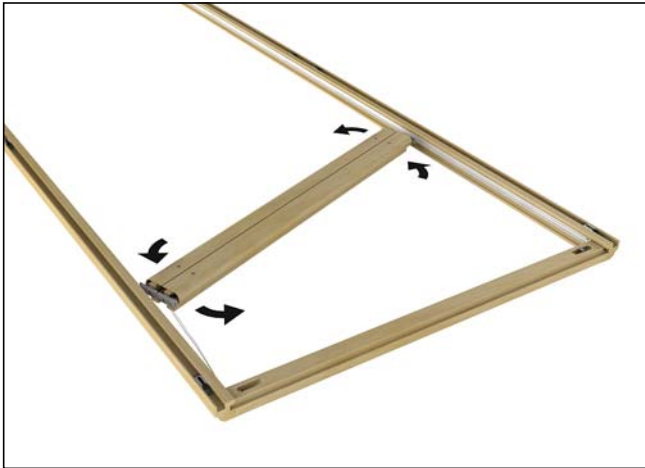


Figure 4

5. At the sill end of the surround remove the crimped cord from the angled hole in the stile of the surround. See figure 5.



Figure 5

6. Finish as desired. Do not reassemble until finish is completely dry.

Replacement

1. Insert crimped end of cords into angled hole and direct the cord to the upper end of the surround. See figure 6. *NOTE: Make sure the interior of the fabric is facing the same direction as the interior of the surround.*



Figure 6

2. Pull the chain ends of cord tight through the pull bar. See figure 7.

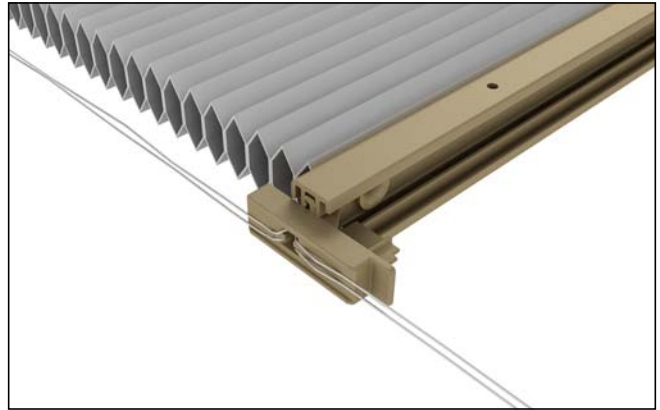


Figure 7

3. Insert one end of pull bar stack into the surround and rotate the other end into place. See figure 8.

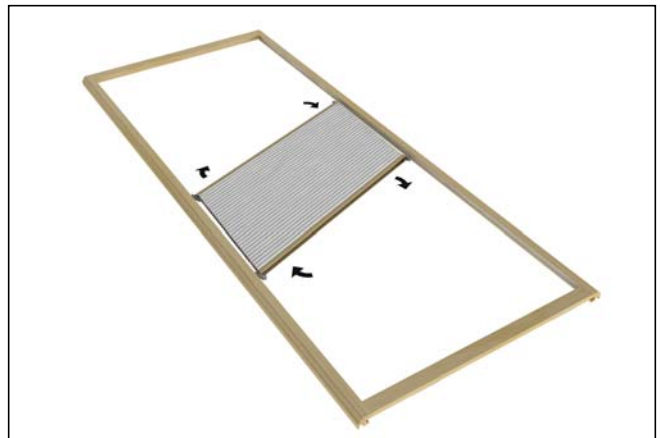


Figure 8

4. Move pull bars to the sill end. As you move the pull bars down, remove the stack in the cords by pulling on the spring end. Lightly clamp to sill end. See figure 9.

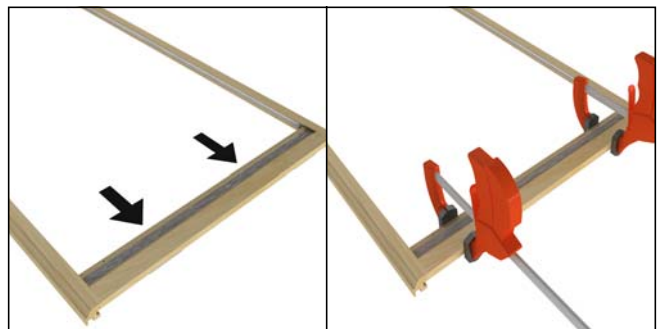


Figure 9

- Thread the cords and single chain link through the end cut of the top rail of interior shade surround. See figure 10.



Figure 10

- Attach single chain to each spring. Use a small pliers to close the links in the chains. Attach slide tensioner to each spring. Make sure both pull bars are at the bottom, square and parallel. See figure 11.

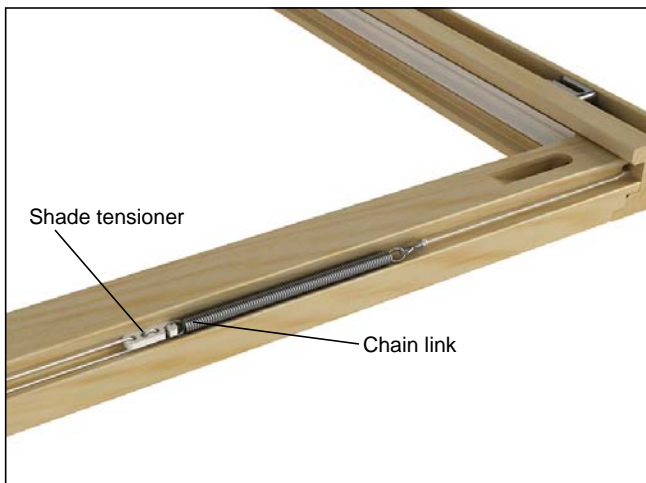


Figure 11

- Attach the #6 x 1/4" screws on back side of pull bar to attach pull bar to fabric adapter. Attach optional shade stack cover if necessary.
- Install interior shade according to the [Installation Instruction](#).

Adjusting the Tension

It may be necessary to adjust the tension in the springs using the following chart:

Shade Width	Spring Dimension Range
Less than 32 1/4" (819)	3 3/4" to 4 5/8" (95-117)
32 1/4"-60 1/4" (819-1530)	4 1/8" to 4 3/4" (105-121)
60 1/4" (1530) or wider	8 3/16" to 9 1/2" (208-241) (double springs), 4 1/8" to 4 3/4" (95-117) (single spring)

- To increase the tension, lightly pull the loose end of the cord in the opposite direction of the spring.
- To reduce tension, unhook the cord tensioner from the spring, and move the slide tensioner toward the spring. Attach the slide tensioner to the spring. If necessary, tension may be added by pulling the loose end of the cord.



Tip

The loose end of the cord can be fed back through the spring.

Damage, defects, or problems resulting from installation not in conformance with these instructions and applicable building codes are excluded from coverage under the Limited Warranty. The current Limited Warranty is available at www.marvin.com.