

Marvin Clad Ultimate Casement Corner Window Measuring Instruction

Before You Begin

IMPORTANT

Marvin Clad Ultimate Casement Corner Window is not load-bearing and should not be installed in any manner that places the unit under load from the wall system. Care must be taken with the design of the structure surrounding these units.

- These measuring instructions cover the following product types: Marvin Clad Ultimate Casement Corner Window.
- The Marvin Clad Ultimate Casement Corner Window may be ordered by: Rough Opening (RO), Masonry Opening (MO), or Frame Size (FS). See the definitions below of these measurements.

You will need to supply:

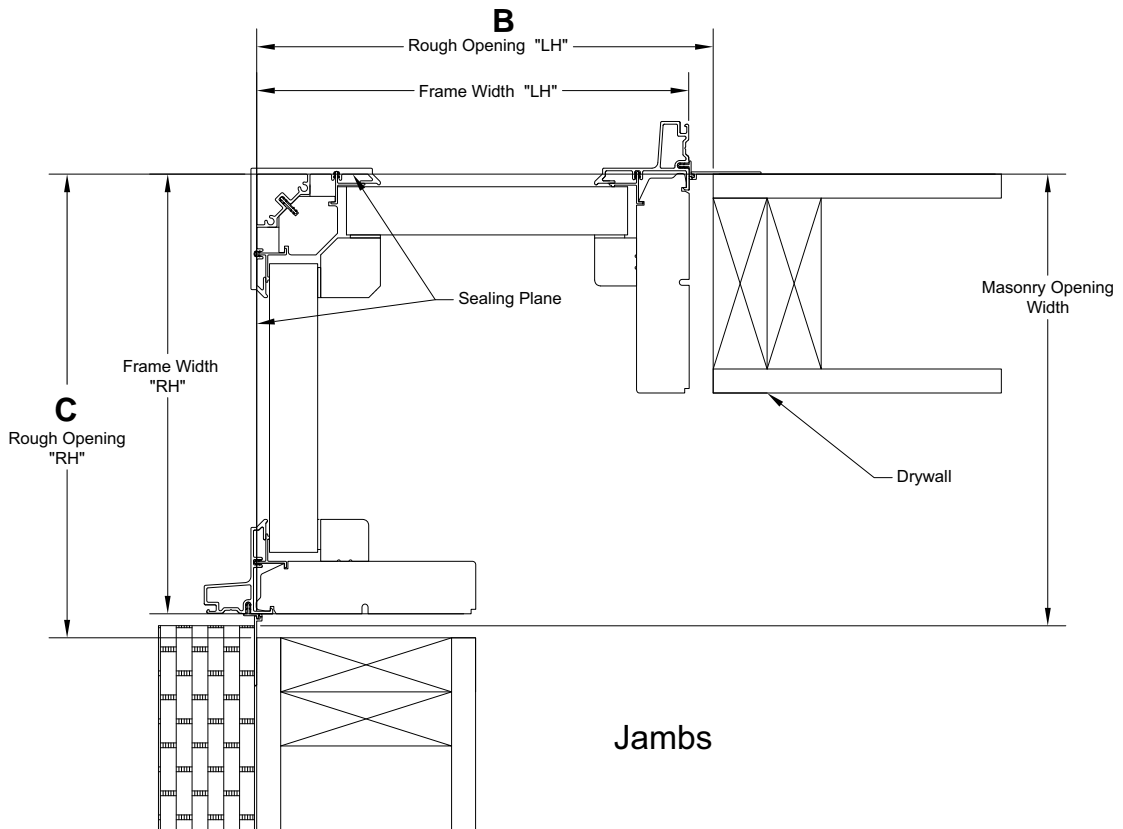
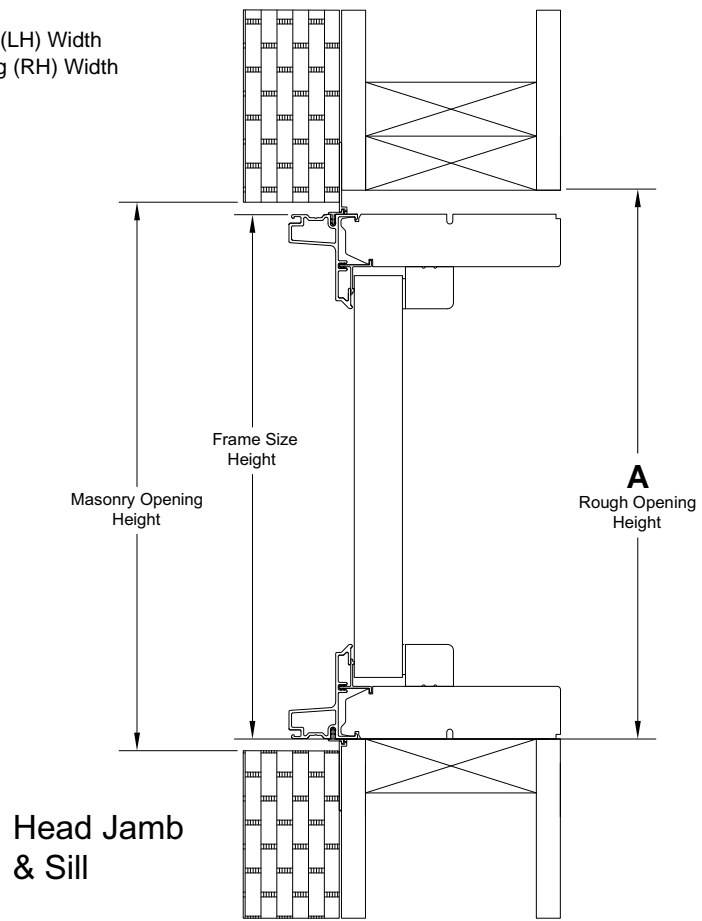
Tape Measure

Measurement Definitions

- 1. Rough Opening (RO)** is a measurement of the wall opening that provides clearance on three sides of the window for proper installation, insulating, and shimming. **RO Height** = FS Height + ½". **RO Width** = FS Width + 1" for each leg (side).
 - Separate RO width measurements are required for each leg (side) of the corner window.
 - Include the exterior sheathing in the FS Width measurement.
 - In some instances, this measurement may need to account for rigid insulation if the nailing fin (sealing plane) is to the exterior of the insulation.
- 2. Masonry Opening (MO)** is ¾" wider than each FS Width (i.e. FS₁ and FS₂) and ¼" higher than FS Height. **MO Height** = FS Height + ¼", or Outside of Exterior Casing + ¼". **MO Width** = FS Width + ¾", or Outside of Exterior Casing + ¼"
- 3. Frame Size (FS)** is a measurement of the frame width and height. **FS Height** is a measurement taken from the underside of the sill to the top side of the head jamb. **FS Width** is a measurement taken from the outside of the jamb to the nailing fin (sealing plane) of the opposite leg (side) of the corner window.
 - Separate FS width measurements are required for each leg (side) of the corner window.

Marvin Clad Ultimate Casement Corner Window Section Details

- Measurement A:** Corner Window RO Height
- Measurement B:** Corner Window RO Left Leg (LH) Width
- Measurement C:** Corner Window RO Right Leg (RH) Width



Measurement Tables

PROJECT _____

MEASURED BY: _____

DATE: _____

Measurement A: Corner Window RO Height

Measurement B: Corner Window RO
Left Leg (LH) Width

Measurement C: Corner Window RO Right
Leg (RH) Width

NOTE: Follow the steps on the previous page to fill in this worksheet.

Required Measurements:

RO Height = FS Height + ½”.

RO Width = FS Width + ½” for each leg (side).

Optional Measurements:

MO Height = FS Height + ¼”, or Outside of Exterior Casing + ¼”.

MO Width = FS Width + ¼”, or Outside of Exterior Casing + ¼”

FS Height is a measurement taken from the underside of the sill to the top side of the head jamb.

FS Width is a measurement taken from the outside of the jamb to the nailing fin (or sealing plane) of the opposite leg (side) of the corner window.

Window Location	Product Description	Rough Opening Measurement			Notes or Other Measurements
		A	B	C	

Framing Conversions

Framing RO Width is the measurement of the wall frame only, excluding any exterior sheathing and/or rigid insulation

If Sealing Plane is at the exterior of the Sheathing: **Framing RO Width** = RO Width – Exterior Sheathing.

Example: 36" RO width – 0.625" exterior sheathing = 35.375" framing RO (before sheathing)

If Sealing Plane is at the exterior of Rigid Insulation: **Framing RO Width** = RO Width – Exterior Sheathing – Exterior Rigid Insulation.

Example: 36" RO width – 0.625" Exterior Sheathing – 1" Rigid Insulation = 34.375" Framing RO Width (before sheathing/insulation)

