

Clad Ultimate Double Hung Magnum Round Top

Unit Features.....	1
Minimum and Maximum Guidelines and Certified Ratings.....	2
Measurement Conversions and Egress Clear Openings	3
Section Details: Double Hung and Single Hung Operators.....	5
Available Shapes.....	6
Section Details: Casing Options.....	7

Clad Ultimate Double Hung Magnum Round Top

Unit Features

Clad Ultimate Round Top Double Hung Magnum: CUDHMRT

Clad Ultimate Round Top Single Hung Magnum: CUSHMRT

Clad Ultimate Round Top Double Hung Magnum Picture: CUDHMPRT

Clad Ultimate Round Top Double Hung Magnum Transom: CUDHMTRT

NOTE: Clad Ultimate Round Top Double Hung Magnum Picture and Clad Ultimate Round Top Double Hung Magnum Transom are not available with CE mark.

Hardware:

- Clad Ultimate Round Top Double Hung Magnum Picture and Clad Ultimate Round Top Double Hung Magnum Transom are not available with a Balance system: Spiral balance system.
- Lock: High pressure zinc die-cast cam lock and keeper cam lock and keeper. Standard color: Satin Taupe.
 - Optional colors: White, Brass, Satin Chrome, Antique Brass, Bronze, Oil Rubbed Bronze, and Satin Nickel.
- Sash lift is optional-same color choices as lock.
- Optional window opening device - field applied.

Optional Glass: CUDHM/CUDHT - 7/8", CUDHMP - 1"

- Tripane Low E1 outer piece and Low E1 Argon inner piece
- Tripane Low E1 outer piece and Low E1 Krypton-Argon inner piece
- Tripane Low E2 outer piece and Low E2 Argon inner piece
- Tripane Low E2 outer piece and Low E2 Krypton-Argon inner piece
- Tripane Low E3 outer piece and Low E1 Argon inner piece
- Tripane Low E3 outer piece and Low E1 Krypton-Argon inner piece

CE Optional Glass: CUDHMRT - 7/8",

- Tripane glass types: Low E1/E1 Argon or Krypton-Argon, Low E2/E2 Argon or Krypton-Argon, Low E3/E1 Argon or Krypton
- Glass panes available in 3, 4 and 6 mm thicknesses
- Glazing will be altitude adjusted for high elevations, Argon, Argon-Krypton, and Krypton gas not included

CE Mulling Options

- Muller assemblies up to 70 3/4" (1797) x 80 3/8" (2042) as 1H x multi-width
- Muller assemblies with 1" (25) LVL or 3/8" (10) aluminum mull reinforcement up to 124 7/8" (3172) x 100 3/8" (2550) as a multi-wide or multi-high assembly

Clad Ultimate Double Hung Magnum Round Top

Minimum and Maximum Guidelines and Certified Ratings

Frame Size Minimum and Maximum Guidelines - Certified											
Unit Type		Minimum				Maximum				Max Glass	
		Width		Springline Height		Width		Height			
		in	mm	in	mm	in	mm	in	mm	Sq. Ft.	
CUDHMRT	DP35	21 3/8	(543)	32 3/8	(822)	59 3/8	(1508)	120 9/64	(3052)	25	
CUDHMRT	DP50	21 3/8	(543)	32 3/8	(822)	53 3/8	(1356)	110 9/64	(2798)	18	
CUDHMRT	Insulating Glass	Continuous	13 3/8	(340)	2 13/16	(71)	75	(1905)	90	(2286)	25
		Non-Continuous	13 3/8	(340)	6 1/2	(165)	75	(1905)	90	(2286)	25
CUDHMP RT	Insulating Glass	Continuous	13 3/8	(340)	2 13/16	(71)	75	(1905)	90	(2286)	60
		Non-Continuous	13 3/8	(340)	6 1/2	(165)	75	(1905)	90	(2286)	60

Frame Size Minimum Guidelines - Atypical Certified				
Unit Type	Minimum			
	Width		Springline Height	
	in	mm	in	mm
CUDHMRT - Operator	15 3/8	(391)	64 3/8	(1635)
CUDHMRT - Stationary	15 3/8	(391)	32 3/8	(822)

Frame Size Maximum Guidelines - Non Certified					
Unit Type		Maximum			
		Width		Height	
		in	mm	in	mm
CUDHMRT		65 3/8	(1661)	128 9/64	(3255)
CUDHMT RT	Insulating Glass	105	(2667)	59 1/2	(1511)
CUDHMP RT	Insulating Glass	120	(3048)	128 3/8	(3261)

Product	Air Tested to psf	Water Tested to psf	Structural Tested to psf	Certification Rating	Design Pressure (DP)	Overall Width		Overall Height	
						in	mm	in	mm
Clad Ultimate Double Hung Magnum Round Top 4848	1.57	7.5	75	LC-PG50-H	50	53 3/8	(1356)	110 1/8	(2797)
Clad Ultimate Double Hung Magnum Round Top 5456	1.57	5.25	52.5	LC-PG35-H	35	59 3/8	(1508)	120 3/8	(3058)

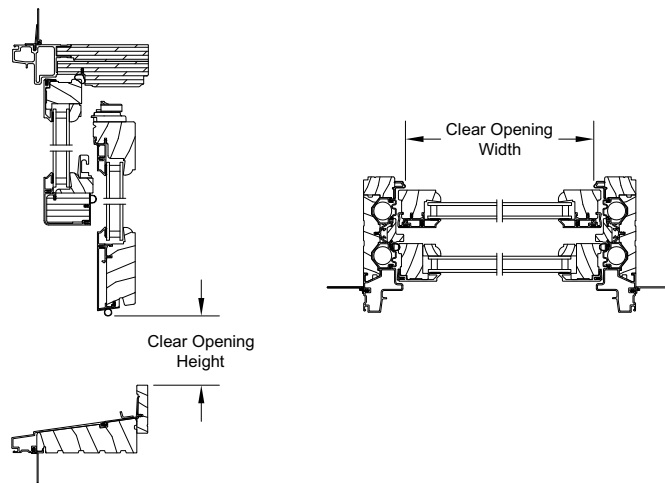
NOTE: Maximum sash weight: 130 lbs.

For CE ratings, please refer to CE Performance Section.

Measurement Conversions and Egress Clear Openings

Scale: 1 1/2" = 1' 0"

Egress Conversions		
Glass Size Width = 1 7/8" (48) = Egress Width Rough Opening Width - 4 1/2" (114) = Egress Width		
Glass Size Height	Rough Opening Height	Egress Height
20" (508) to less than 28" (711)	48 7/8" (1241) to less than 64 7/8" (1648)	16 1/2" (419)
28" (711) to less than 38" (965)	64 7/8" (1648) to less than 84 7/8" (2156)	24 1/2" (622)
38" (965) to less than 49" (1245)	84 7/8" (2156) to less than 106 7/8" (2715)	34 1/2" (876)
49" (1245) to less than 60" (1524)	106 7/8" (2715) to less than 128 7/8" (3273)	45 1/2" (1156)



Measurement Conversions

Clad Ultimate Round Top Double Hung Magnum						
Unit Measurement		Width		Height		
From	To					
Frame Size		in	mm		in	mm
OM of Frame	Rough Opening	+ 1	(25)		+ 1/2	(13)
Masonry Opening	Rough Opening	-1/2	(13)		-1/4	(06)
Masonry Opening w/BMC	Rough Opening	-2 1/8	(54)		-2 3/16	(56)
Masonry Opening w/Flat Casing	Rough Opening	-5 1/2	(140)		-3 7/8	(98)
Masonry Opening w/BMC (all sides)	Rough Opening	-2 1/8	(54)		-1 27/32	(47)
Masonry Opening w/Flat Casing (all sides)	Rough Opening	-5 1/2	(140)		-5 7/32	(133)
Glass		in	mm		in	mm
Daylight Opening	Glass	+ 1 1/16	(27)		+ 1 1/16	(27)
Screen		in	mm		in	mm
Rough Opening	OM of Screen	-3 1/16	(78)		+ 2 11/32	(60)

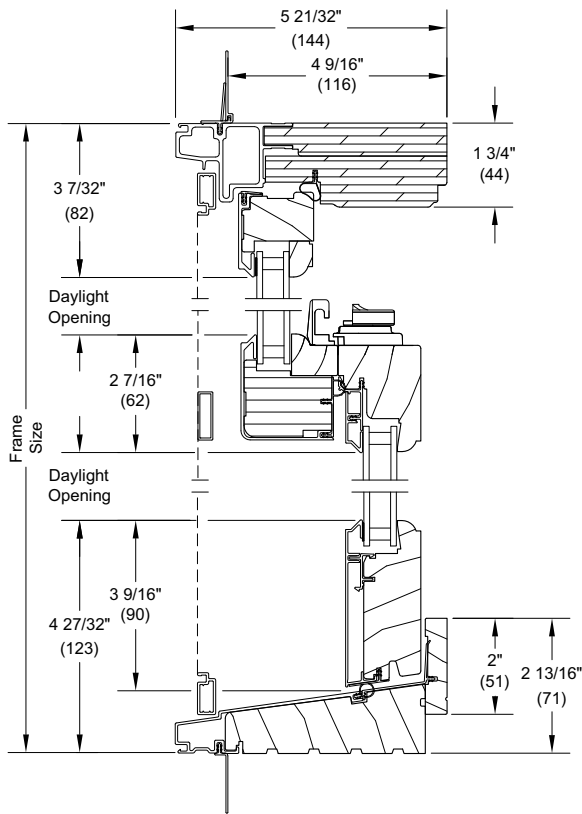
Clad Ultimate Round Top Double Hung Magnum Transom						
Unit Measurements		Width		Height		
From	To					
Frame Size		in	mm	in	mm	
Frame Size	Rough Opening	+ 1	25	+ 1/2	13	
Masonry Opening	Frame Size	-1/2	13	-1/4	6	
Masonry Opening w/BMC	Frame Size	-3 1/8	79	-2 3/16	56	
Masonry Opening w/Flat Casing	Frame Size	-6 1/2	165	-3 7/8	98	
Glass		in	mm	in	mm	
Daylight Opening	Glass	+ 1 1/16	27	+ 1 1/16	27	

Clad Ultimate Round Top Double Hung Magnum Picture						
Unit Measurements		Width		Height		
From	To					
Frame Size		in	mm	in	mm	
Frame Size	Rough Opening	+ 1	(25)	+ 1/2	(13)	
Masonry Opening	Frame Size	-1/2	(13)	-1/4	(06)	
Masonry Opening w/BMC	Frame Size	-3 1/8	(79)	-2 3/16	(56)	
Masonry Opening w/Flat Casing	Frame Size	-6 1/2	(165)	-3 7/8	(98)	
Glass		in	mm	in	mm	
Daylight Opening	Glass	+ 1 3/16	(30)	+ 1 1/16	(27)	

Clad Ultimate Double Hung Magnum Round Top

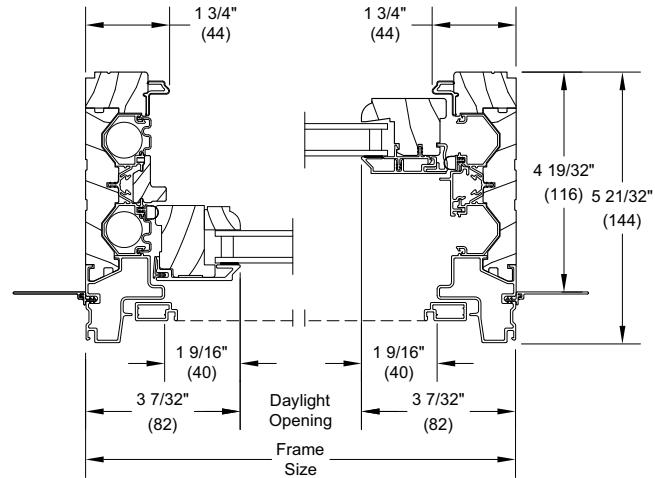
Section Details: Double Hung and Single Hung Operators

Scale: 3" = 1' 0"



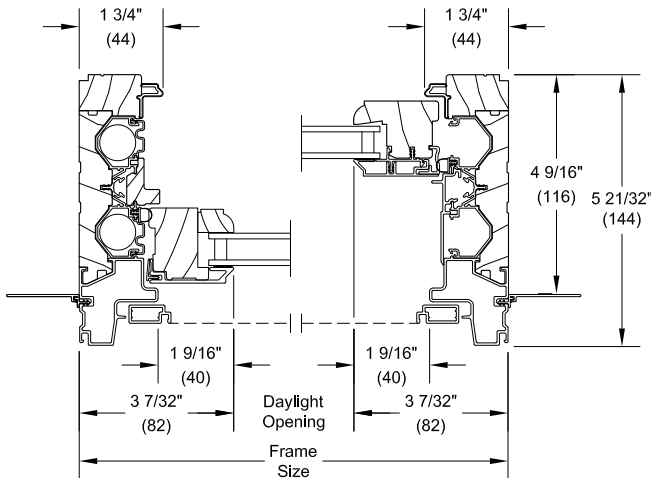
Head Jamb and Sill

Double Hung Operators

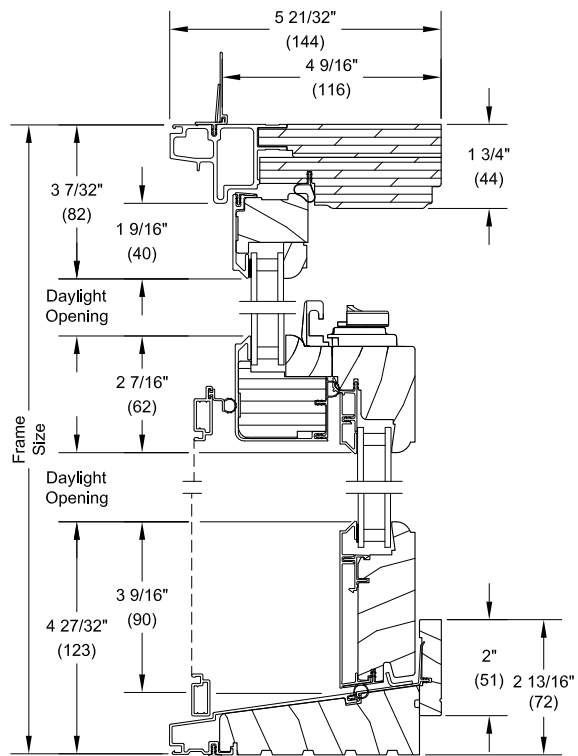


Jambs

Single Hung Operators



Jambs

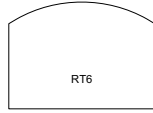


Head Jamb and Sill

Available Shapes

Scale: 3" = 1' 0"

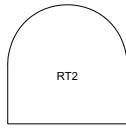
Double Hung



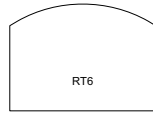
Transom and Picture



RT 1*



RT 2



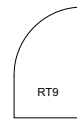
RT 6



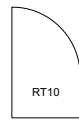
RT 7



RT 8



RT 9



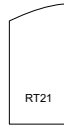
RT 10



RT 17*



RT 18*



RT 21



RT 22



RT 23



RT 24



RT 25



RT 26



RT 29*



RT 30



RT 31*



RT 32*



RT 33



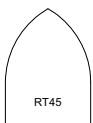
RT 34



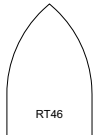
RT 42*



RT 43*



RT 45



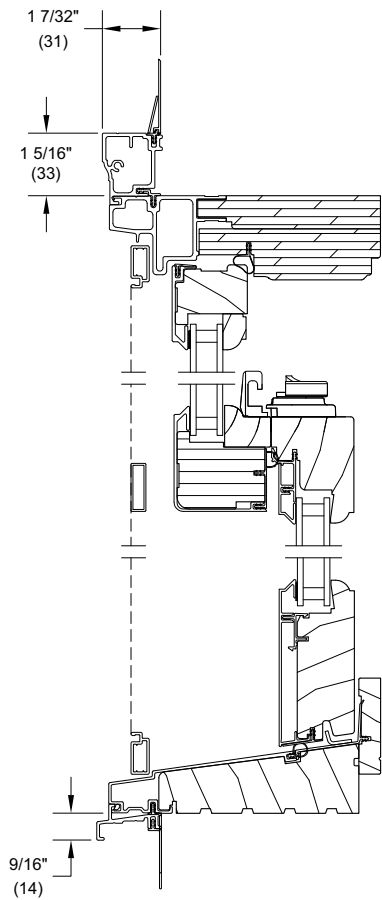
RT 46*

* Shapes are available in both transoms and pictures units, but may have size limitations. Contact your Marvin representative. Simulated Shapes. Simulated shapes require a minimum springline to bottom of sill height of 2 13/16" (17).

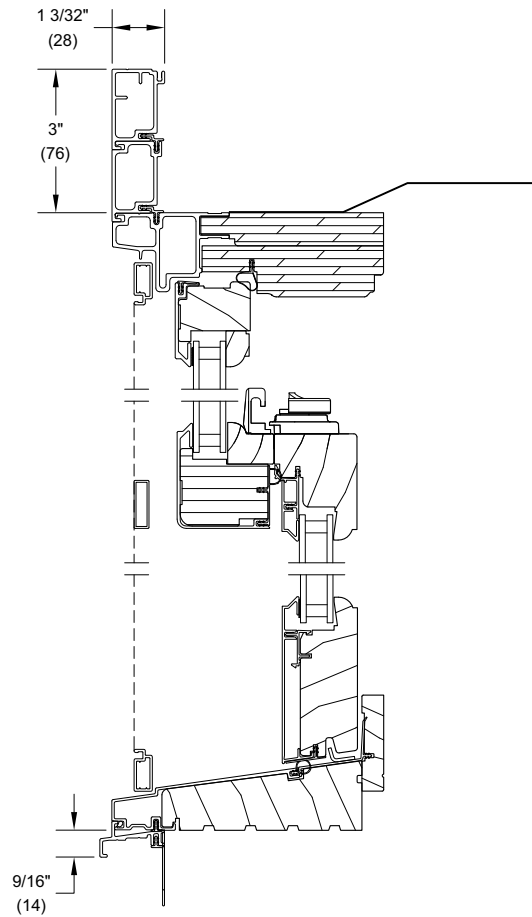
Clad Ultimate Double Hung Magnum Round Top

Section Details: Casing Options

Scale: 3" = 1' 0"



Head Jamb and Sill
with Clad Brick Mould Casing



Head Jamb and Sill
with Clad Flat Casing