






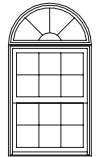
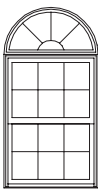
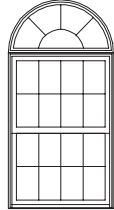
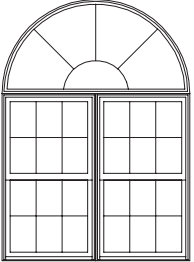
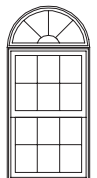
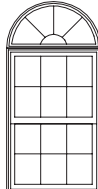
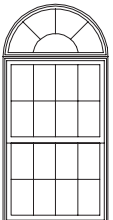
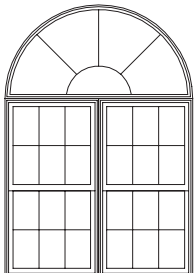
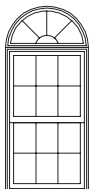
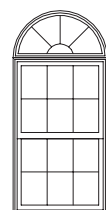
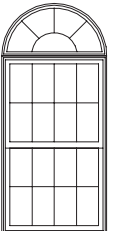
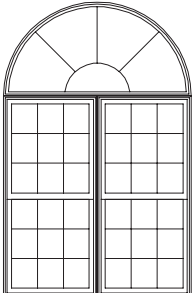
# DOUBLE HUNG ROUND TOPS

INTEGRITY® FROM MARVIN®  
WOOD-ULTREx® SERIES

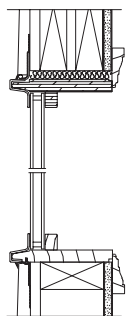
## True Half (RT1)

<b>MO (mm)</b>	2-6 (762)	<b>MO (mm)</b>	2-10 (864)	<b>MO (mm)</b>	3-2 (965)	<b>MO (mm)</b>	5-7 1/2 (1715)	<b>MO (mm)</b>	5-11 1/2 (1816)
<b>RO (mm)</b>	2-6 1/2 (775)	<b>RO (mm)</b>	2-10 1/2 (876)	<b>RO (mm)</b>	3-2 1/2 (978)	<b>RO (mm)</b>	5-8 (1727)	<b>RO (mm)</b>	6-0 (1829)
<b>FS (mm)</b>	2-5 1/2 (749)	<b>FS (mm)</b>	2-9 1/2 (851)	<b>FS (mm)</b>	3-1 1/2 (953)	<b>FS (mm)</b>	5-7 (1702)	<b>FS (mm)</b>	5-11 (1803)
1-3 (381) 1-3 1/4 (387) 1-2 3/4 (375)		1-5 (432) 1-5 1/4 (438) 1-4 3/4 (425)		1-7 (483) 1-7 1/4 (489) 1-6 3/4 (476)		2-9 3/4 (857) 2-10 (864) 2-9 1/2 (851)		2-11 3/4 (908) 3-0 (914) 2-11 1/2 (902)	
	IRT30 1W DH		IRT34 1W DH		IRT38 1W DH		IRT34 2W DH		IRT36 2W DH

## Multiple Assemblies

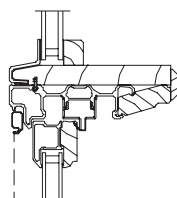
<b>MO (mm)</b>	2-6 (762)	<b>MO (mm)</b>	2-10 (864)	<b>MO (mm)</b>	3-2 (965)	<b>MO (mm)</b>	5-7 1/2 (1715)
<b>RO (mm)</b>	2-6 1/2 (775)	<b>RO (mm)</b>	2-10 1/2 (876)	<b>RO (mm)</b>	3-2 1/2 (978)	<b>RO (mm)</b>	5-8 (1727)
<b>FS (mm)</b>	2-5 1/2 (749)	<b>FS (mm)</b>	2-9 1/2 (851)	<b>FS (mm)</b>	3-1 1/2 (953)	<b>FS (mm)</b>	5-7 (1702)
4-6 3/4 (1391) 4-7 (1397) 4-6 1/2 (1384)		5-4 3/4 (1645) 5-5 (1651) 5-4 1/2 (1638)		6-2 3/4 (1899) 6-3 (1905) 6-2 1/2 (1892)		7-9 1/2 (2375) 7-9 3/4 (2381) 7-9 1/4 (2369)	
	IRT30 1W / ITDH3040		IRT34 1W / ITDH3448		IRT38 1W / ITDH3856		IRT34 2W / ITDH3460 2W
5-2 3/4 (1594) 5-3 (1600) 5-2 1/2 (1588)		5-8 3/4 (1746) 5-9 (1753) 5-8 1/2 (1740)		6-6 3/4 (2000) 6-7 (2007) 6-6 1/2 (1994)		8-11 1/2 (2477) 8-1 3/4 (2483) 8-1 1/4 (2470)	
	IRT30 1W / ITDH3048		IRT34 1W / ITDH3452		IRT38 1W / ITDH3860 E		IRT34 2W / ITDH3464 2W
5-6 3/4 (1695) 5-7 (1702) 5-6 1/2 (1689)		6-0 3/4 (1848) 6-1 (1854) 6-0 1/2 (1842)		6-10 3/4 (2102) 6-11 (2108) 6-10 1/2 (2096)		8-9 1/2 (2680) 8-9 3/4 (2686) 8-9 1/4 (2673)	
	IRT30 1W / ITDH3052		IRT34 1W / ITDH3456		IRT38 1W / ITDH3864 E		IRT34 2W / ITDH3472 2W E

## Construction Detail



Double Hung/Door  
Head Jamb and Sill

## Horizontal Mullion Detail



Double Hung Round Top  
Over Double Hung Operator

Details and Elevations not to scale.

E = These windows meet National Egress Codes for fire evacuation. Local codes may differ.

When ordering 6 9/16" (167 mm) jambs, add 1/4" (6 mm) to width and 1/8" (3 mm) to height for Rough Opening, Frame Size and Masonry Opening.

Optional Round Top SDL, SDL with Spacer Bar, Grilles and GBG are available in a standard cut, as shown on page 35. (Round Top divided lites not available in other lite cuts.)

Optional Double Hung Grilles, GBGs and SDLs are available in several lite cut variations, standard Rectangular cut shown.