

Infinity Direct Glaze Polygon and Rectangles

Unit Features.....	1
Lite Options	2
Minimum and Maximum Guidelines	3
Certified Sizes and Ratings.....	4
STC/OITC Glass Values	5
Mulling Guidelines - Full Frame Rectangle Assemblies.....	6
1/2" Mull Reinforcement Guidelines - Polygons	7
Mulling Guidelines - Insert Rectangle Assemblies	8
Measurement Conversions - Direct Glaze Rectangle Units.....	9
Section Details: Full Frame Polygon/Rectangle.....	10
Section Details: Insert Polygon/Rectangle	11
Section Details: Casing Options.....	12
Section Details: Mullions	13
Section Details: Mullions	14
Section Details: 1/2" Mull Reinforcement	15
Interior Frame Accessories	16

Infinity Direct Glaze Polygon and Rectangles

Unit Features

Infinity Direct Glaze Polygon: NPDG / NINPDG

Ultrex® Pultruded Fiberglass Frame:

- Frame thickness: 1 29/32" (48)
- Frame depth: 2 1/4" (57) from nailing fin, 3 1/4" (83) full width
- Exterior colors: Stone White, Sierra, Cashmere, Pebble Gray, Bahama Brown, Bronze
- Interior colors: Stone White, Sierra, EverWood™

Glass:

- Glazing seal: silicone bedding on exterior and foam tape on interior
- Standard glass is insulating Low E2 Argon or air
- Optional glazing available: Low E1 Argon or air, Low E3 Argon or air, Low E3/ERS Argon or air, tempered, obscure
- Decorative glass options include Glue Chip, Rain, Reed, Narrow Reed, or Frost
- Decorative glass is not available with Low E1, Low E3/ERS, or STC/OITC
- Rain, Reed and Narrow Reed not available with SDL
- SDL available on Frost, annealed or tempered glass
- SDL available on Glue Chip, tempered glass required
- Insulating glass will be altitude adjusted with capillary tubes for higher elevations
- Argon gas is not available for elevations that require capillary tubes

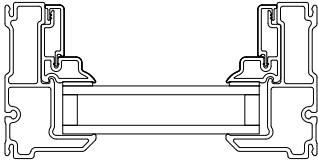
Simulated Divided Lites (SDL):

- SDL Bar (interior and exterior): 7/8" (22) or 1 1/8" (29)
- Simulated rail (interior and exterior): 2 11/32" (30) (picture unit only)
- Exterior color: matched to unit exterior
- Interior color: matched to interior - ABS material
- Pattern: equal rectangular, cottage, prairie, check rail

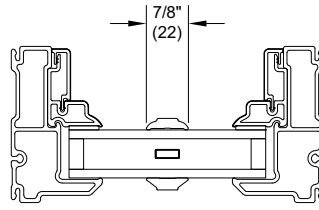
Gilles-Between-the-Glass (GBG):

- 23/32" (18) or 1" (25) contoured aluminum bar
- Exterior: color matched to unit exterior
- The exterior GBG color is designed to best match the unit exterior color when used with Low E glass. The use of different types of glazing options may alter the exterior GBG color appearance.
- Interior color: White, Satin Taupe, Sierra, Bronze
- Pattern: equal rectangular, cottage, prairie, check rail

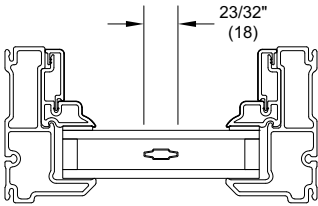
Lite Options



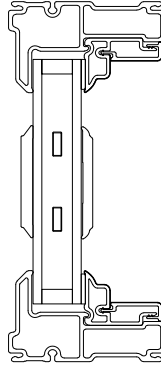
Insulating Glass



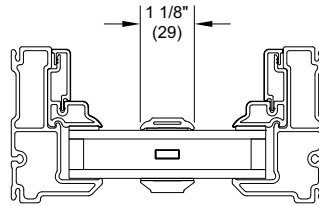
Insulating Glass
7/8" SDL w/ spacer bar



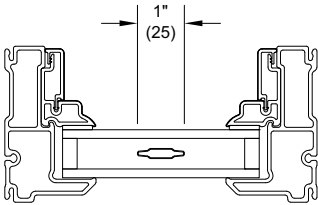
Insulating Glass
23/32" GBG



Insulating Glass
SDL Simulated Rail
w/spacer bar
For Rectangular
Polygons only



Insulating Glass
1 1/8" SDL w/ spacer bar



Insulating Glass
1" GBG

Minimum and Maximum Guidelines

Minimum and Maximum Guidelines - Direct Glaze Polygon and Rectangle										
Unit Type	Frame Size								Glass Limits	
	Min Width		Min Height		Max Width		Max Height		Max Glass	
	in	mm	in	mm	in	mm	in	mm	ft ²	m ²
Polygon/Rectangle	7	(178)	7	(178)	120	(3048)	120	(3048)	52 1/8	4.842

Minimum and Maximum Guidelines - Direct Glaze Polygon and Rectangle										
Unit Type	Inside Opening								Glass Limits	
	Min Width		Min Height		Max Width		Max Height		Max Glass	
	in	mm	in	mm	in	mm	in	mm	ft ²	m ²
Polygon/Rectangle	7 3/8	(187)	7 1/4	(184)	120 3/8	(3058)	120 1/4	(3054)	52 1/8	4.842

Unit Type	Frame Size				Inside Opening			
	Min		Max		Min		Max	
	Sq. Ft.	Sq. Meters	Sq. Ft.	Sq. Meters	Sq. Ft.	Sq. Meters	Sq. Ft.	Sq. Meters
Polygon/Rectangle	13/32	0.037	55 1/8	5.121	3/8	0.034	55 1/2	5.156

NOTE: For Obscure glass, maximum short frame width/height is 73 1/4"

For Obscure glass, maximum long frame width/height is 85 1/4"

For Glue Chip, Frost, and Rain, maximum short frame width/ height is 61 1/4"

For Glue Chip, Frost, and Rain, maximum long frame width/ height is 85 1/4"

For Reed and Narrow Reed, vertical pattern orientation maximum frame width size is 61 1/4", maximum frame height size is 85 1/4"

For Reed and Narrow Reed, horizontal pattern orientation maximum frame width size is 85 1/4", maximum frame height size is 61 1/4"

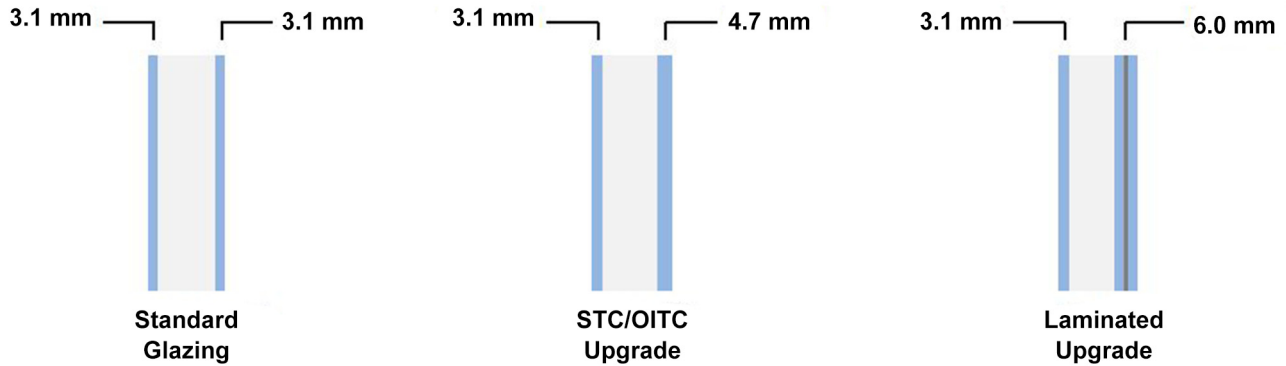
Certified Sizes and Ratings

Product	Air Tested to PSF	Water Tested to psf	Design Pressure (DP)	Certification Rating	Max Overall Width		Max Overall Height	
					in	mm	in	mm
Infinity Polygon Direct Glaze Insert	1.57	10.5	50	CW-PG50-FW	83	(2108)	83 1/2	(2121)
Infinity Polygon Direct Glaze	1.57	10.5	50	CW-PG50-FW	83	(2108)	83 1/2	(2121)

Infinity Direct Glaze Polygon and Rectangles

STC/OITC Glass Values

STC/OITC ratings are shown in the chart below. Infinity's STC/OITC values are provided by third party ASTM testing and reports. The STC/OITC Upgrade option incorporates variable glass thickness or laminate (L) to increase STC/OITC performance and improve sound abatement.



Product Type	Exterior Glazing	Airspace	Interior Glazing	STC	OITC
Polygon Direct Glaze	1/8" (3.1)	25/32" (19.5)	1/8" (3.1)	29	23
	1/8" (3.1)	11/16" (17.5)	3/16" (4.7)	33	27
	1/8" (3.1)	5/8" (16.0)	1/4" (6.0L)	34	27

Infinity Direct Glaze Polygon and Rectangles

Mulling Guidelines - Full Frame Rectangle Assemblies

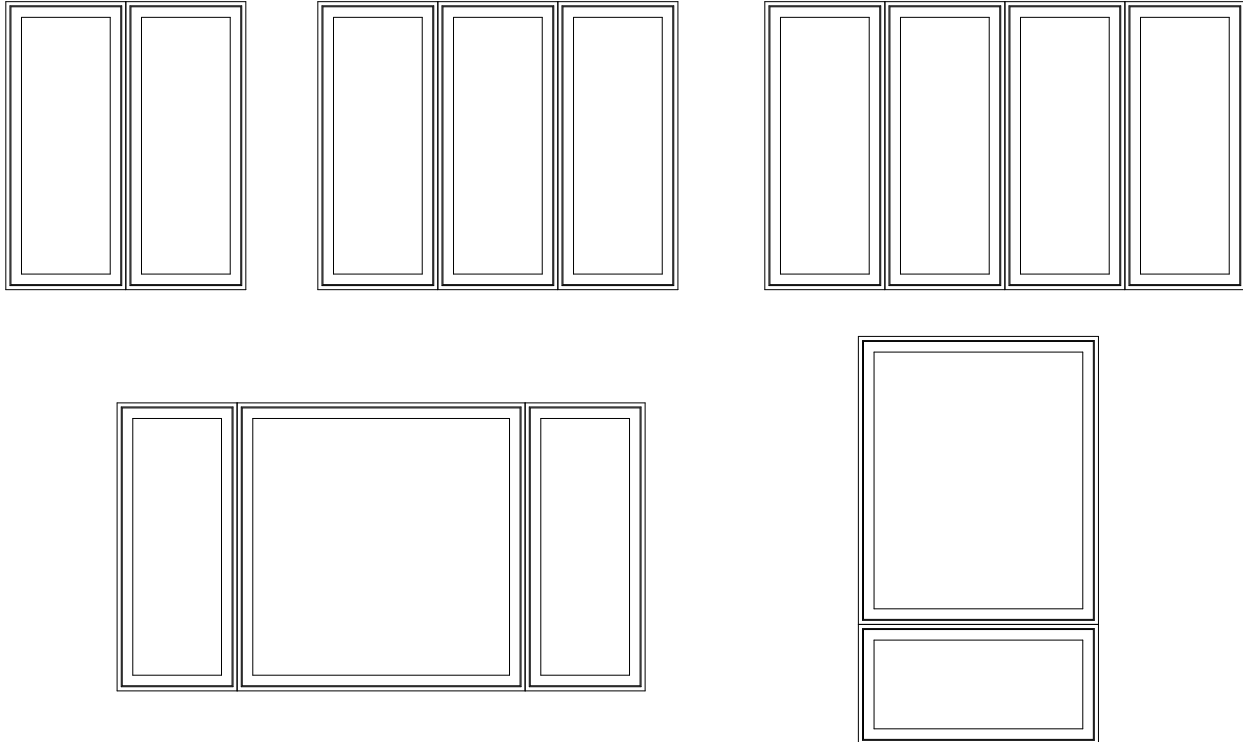
Factory Mullered Polygon/Rectangle Assemblies:

- Assemblies up to 4 units wide by 1 unit high
 - MAXIMUM ROUGH OPENING not to exceed 144" (3658) x 72 1/2" (1842)
- Assemblies up to 1 unit wide by 2 units high
 - MAXIMUM ROUGH OPENING not to exceed 73" (1854) x 96" (2438)

NOTE: Factory mulling is available for rectangle units only. Full frame rectangles can be factory mullered to full frame rectangles, casements, and awnings.

Field mulling kits are available for polygon shapes and mulling to double hung products.

Field mulling beyond the above limitations is not recommended.



Rough Opening Assemblies:

- WIDTH:
 - Frame Width = Single unit Rough Opening width MINUS 1"
 - Total Rough Opening Width = ADD all frame widths PLUS 1"
- HEIGHT:
 - Frame Height = Single unit Rough Opening height MINUS 1/2"
 - Total Rough Opening Height = ADD all frame heights PLUS 1/2"

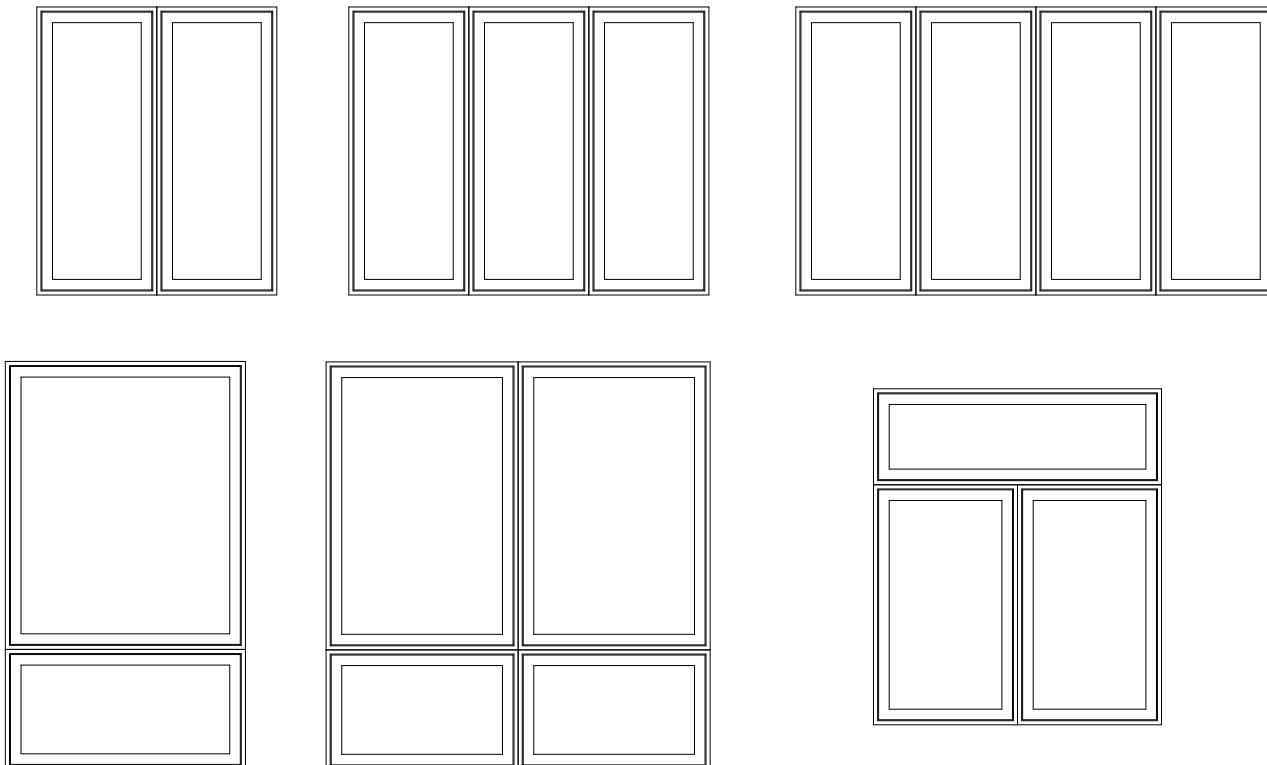
Infinity Direct Glaze Polygon and Rectangles

1/2" Mull Reinforcement Guidelines - Polygons

Factory Mullered 1/2" Mull Reinforcement Polygon/Rectangle Assemblies:

- Assemblies up to 4 units wide by 1 unit high
 - MAXIMUM ROUGH OPENING not to exceed 113" (2870) x 96 1/2" (2451)
- Assemblies up to 1 unit wide by 2 units high
 - MAXIMUM ROUGH OPENING not to exceed 73" (1854) x 96 1/2" (2451)
- Assemblies up to 2 units wide by 2 units high
 - MAXIMUM ROUGH OPENING not to exceed 97 1/2" (2477) x 96 1/2" (2451)
 - MAXIMUM ROUGH OPENING not to exceed 113" (2870) x 86 1/2" (2197)

NOTE: Field mulling beyond the above limitations is not recommended.



Rough Opening Assemblies:

- WIDTH:
 - Frame Width = Single unit Rough Opening width MINUS 1"
 - Total Rough Opening Width = ADD all frame widths PLUS 1/2" for each Vertical Mull Reinforcement PLUS 1"
- HEIGHT:
 - Frame Height = Single unit Rough Opening height MINUS 1/2"
 - Total Rough Opening Height = ADD all frame heights PLUS 1/2" for each Horizontal Mull Reinforcement PLUS 1/2"

Infinity Direct Glaze Polygon and Rectangles

Mulling Guidelines - Insert Rectangle Assemblies

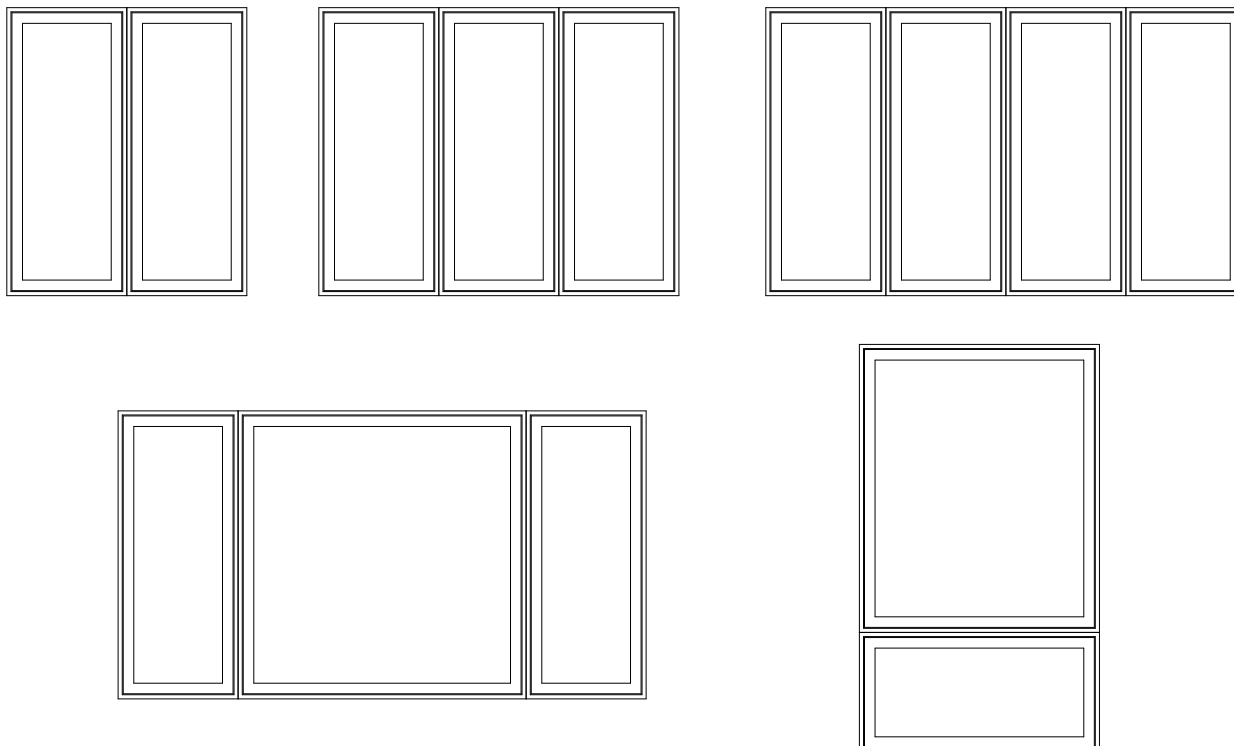
Factory Mullered Insert Rectangle Assemblies:

- Assemblies up to 4 units wide by 1 unit high
 - MAXIMUM ROUGH OPENING not to exceed 143 3/8" (3642) x 72 1/4" (1835)
- Assemblies up to 1 unit wide by 2 units high
 - MAXIMUM ROUGH OPENING not to exceed 72 3/8" (1838) x 95 3/4" (2432)

NOTE: Factory mulling is available for rectangle units only. Insert rectangles can be factory mullered to insert rectangles, casements, and awnings.

Field mulling kits are available for polygon shapes.

Field mulling beyond the above limitations is not recommended.



Rough Opening Assemblies:

- WIDTH:
 - Frame Width = Single unit Rough Opening width MINUS 3/8"
 - Total Inside Opening Width = ADD all frame widths PLUS 3/8"
- HEIGHT:
 - Frame Height = Single unit Rough Opening height MINUS 1/4"
 - Total Inside Opening Height = ADD all frame heights PLUS 1/4"

Measurement Conversions - Direct Glaze Rectangle Only

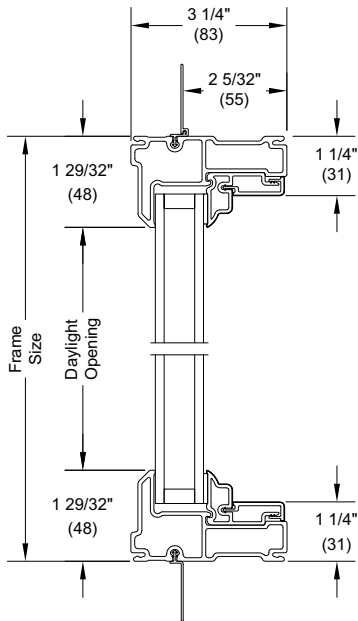
Unit Measurements		Width		Height	
From	To				
Rough Opening		in	mm	in	mm
MO with BMC	Rough Opening	-2 1/4	(57)	-1 11/16	(43)
Masonry Opening	Rough Opening	+ 1/2	(13)	+ 1/4	(6)
OM of Frame	Rough Opening	+ 1	(25)	+ 1/2	(13)
Daylight Opening	Rough Opening	+ 4 25/32	(122)	+ 4 9/32	(109)
Frame		in	mm	in	mm
Daylight Opening	OM of Frame	+ 3 25/32	(96)	+ 3 25/32	(96)
Inside Opening		in	mm	in	mm
Daylight Opening	Inside Opening	+ 4 5/32	(106)	+ 4 1/32	(103)
Inside Opening	OM of Frame	-3/8	(10)	-1/4	(6)
Glass		in	mm	in	mm
Daylight Opening	Glass	+ 1 3/8	(35)	+ 1 3/8	(35)

NOTE: On all units, we maintain our clearance or conversion dimension perpendicular to the frame. For this reason standard rectangular conversions cannot be used for any unit involving a radius or angles. These must be calculated on an individual basis. If any dimension is critical (such as frame O.S.M. to match lower unit) then the order should be placed with that dimension and Infinity will calculate the accurate dimensions needed.

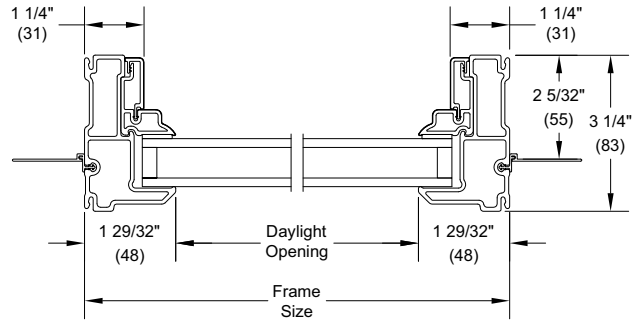
Infinity Direct Glaze Polygon and Rectangles

Section Details: Full Frame Polygon/Rectangle

Scale: 3" = 1' 0"



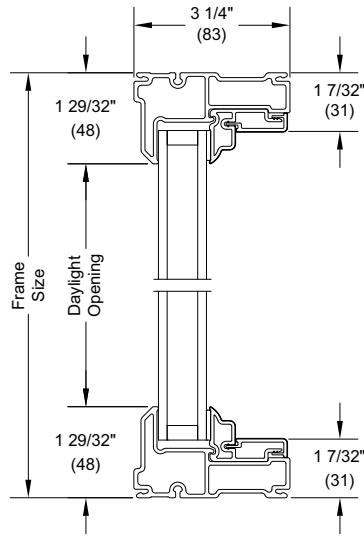
Head Jamb and Sill



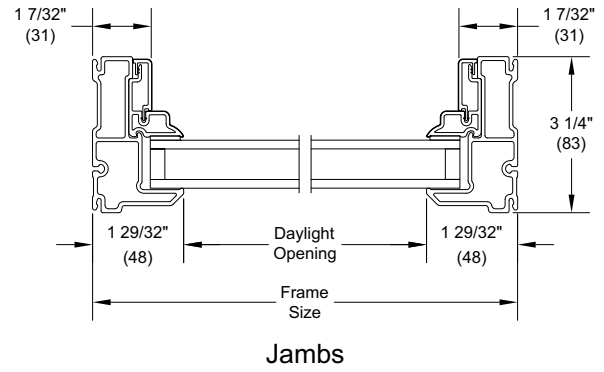
Jamb

Section Details: Insert Polygon/Rectangle

Scale: 3" = 1' 0"



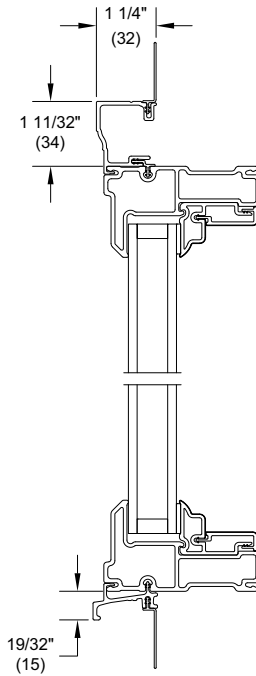
Head Jamb and Sill



Jamb

Section Details: Casing Options

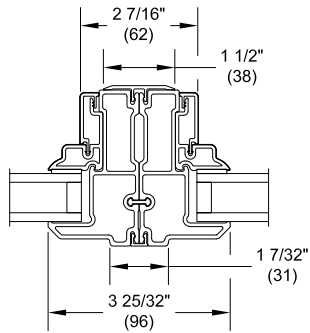
Scale: 3" = 1' 0"



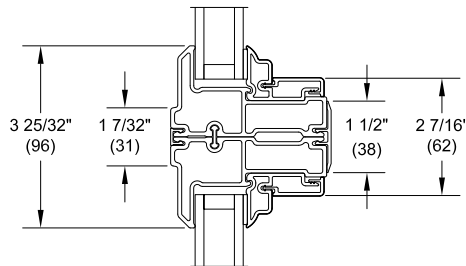
Brick Mould
Casing

Section Details: Mullions

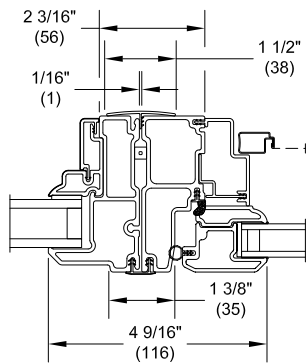
Scale: 3" = 1' 0"



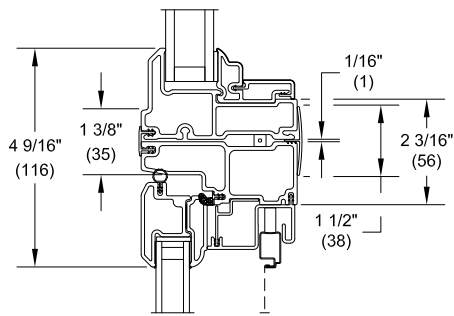
Vertical Mullion
NPDG/NPDG



Horizontal Mullion
NPDG/NPDG



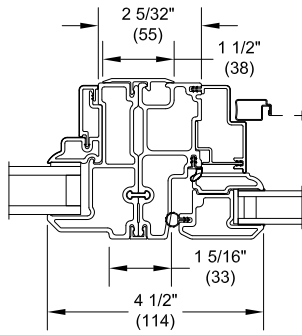
Vertical Mullion
NPDG/NINCA



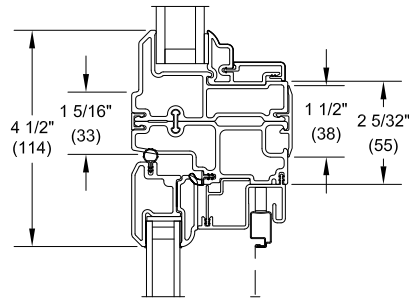
Horizontal Mullion
NPDG/NINCA

Section Details: Mullions

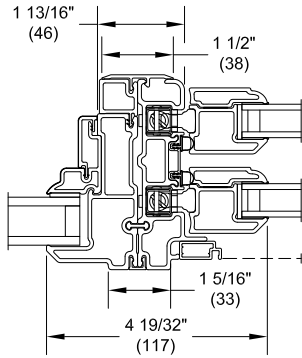
Scale: 3" = 1' 0"



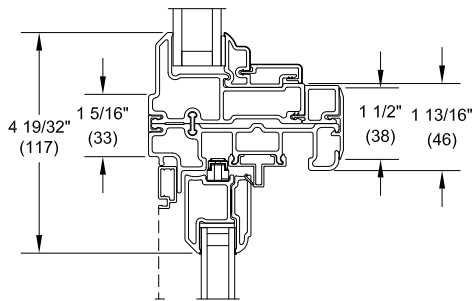
**Vertical
Mullion
NPDG/NCA**



**Horizontal
Mullion
NPDG/NCA**



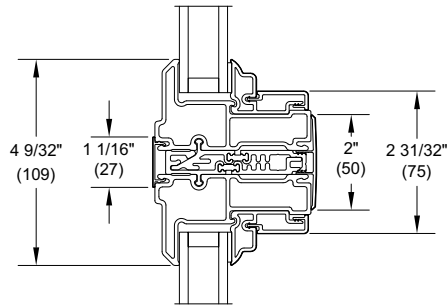
**Vertical
Mullion
NPDG/NDH**



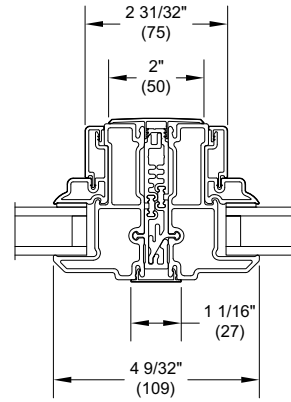
**Vertical
Mullion
NPDG/NDH**

Section Details: 1/2" Mull Reinforcement

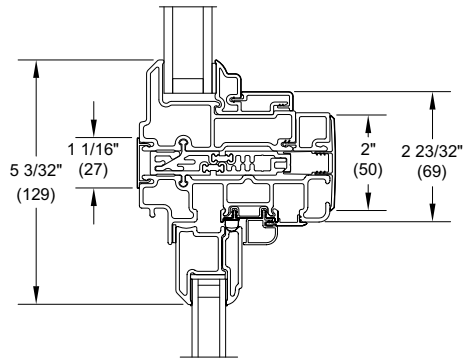
Scale: 3" = 1' 0"



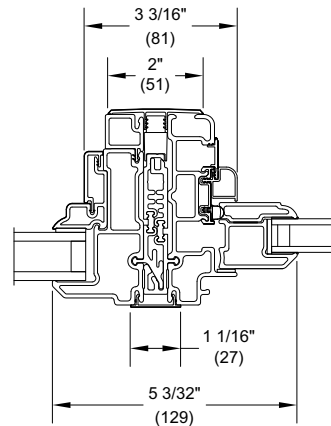
1/2" Mull Reinforcement
NDGRT/NPDG



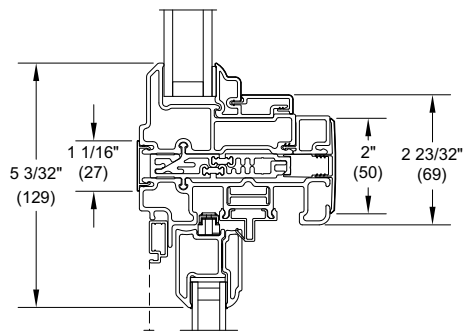
1/2" Mull Reinforcement
NPDG/NPDG



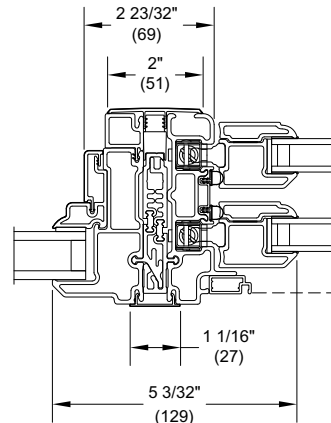
1/2" Mull Reinforcement
NDGRT, NPDG/NDHP



1/2" Mull Reinforcement
NPDG/NDHP



1/2" Mull Reinforcement
NDGRT, NPDG/NDH



1/2" Mull Reinforcement
NPDG/NDH

Interior Frame Accessories

Scale: 3" = 1' 0"

