

Clad Ultimate Double Hung-Next Generation IZ3 2.0 Supplemental Installation Instruction

These instructions are applicable for the following StormPlus products:

- Clad Ultimate Double Hung-Next Generation IZ3 2.0
- Clad Ultimate Double Hung-Next Generation IZ3 Round Top 2.0

NOTE: Numbers listed in parentheses () are metric equivalents in millimeters rounded to the nearest whole number.

Fastening Options

Installation methods outlined in this instruction are aluminum nailing fin (the default method), through jamb fastening and structural brackets.

Operator and transom units require one of the following methods: aluminum nail fin with jamb screw near check rail, structural brackets, or through jamb screws.

Picture units require structural brackets and jamb screws are the only options.

Performance Brackets

1. Operator units that have performance brackets require a screw through jamb in pre-marked hole adjacent from upper jamb bracket(s) and through center of lower jamb bracket(s). See figure 1.

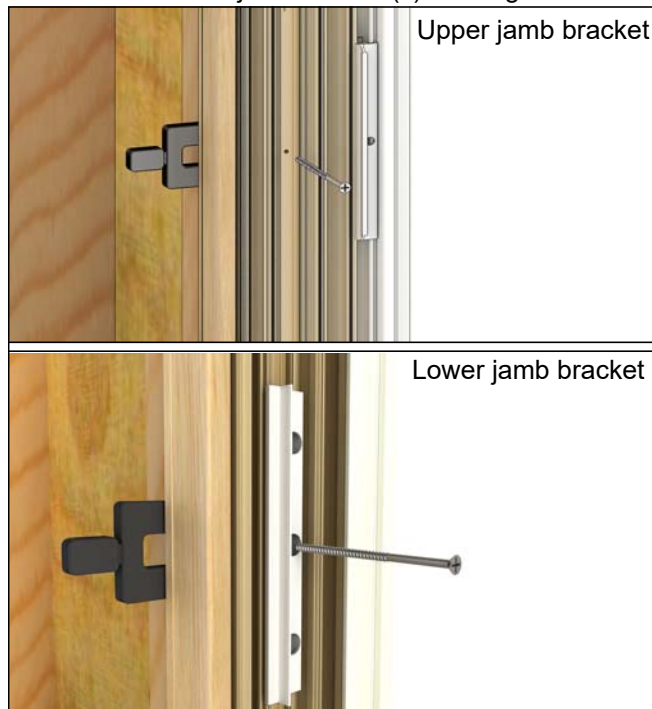


Figure 1

Aluminum Nail Fin

NOTE: Units with vinyl nailing fin will need to use an alternative method of fastening such as through jamb or structural bracket installation.

1. Manually fold out nail fin until it is perpendicular with the frame.
2. Take care during handling and installation not to damage the corner gasket. After unit is secured in the opening fold supplied drip cap to "L" shape as shown and install per unit flashing instructions. See figure 2.



Figure 2

3. *Shimming and adjustment must be done prior to permanently fastening the nailing fin.* Fasten the nailing fin with 2" (51) roofing nails spaced 4" (102) maximum from corners and 8" (203) maximum around the perimeter. See figure 3. **Transom units:** Nailing fin must also fasten the head jamb with jamb screws spaced 4" (102) from corner and 24" (610) max on center.



Figure 3

4. On operator units remove interior jamb cover to install the jamb screw. See figure 4.



Figure 4

5. Install screws near the check rail.

Through Jamb Installation

Note: For units installed with installation screws through the framing members, be sure to shim at each fastening location to avoid bowing/distorting jambs.

1. Remove the interior wood cover (figure 5A), exterior mid-clad cover and vinyl assembly for access to installation holes (figure 5B). Use stiff putty knife or small flathead screwdriver to carefully remove the covers. See figure 5.

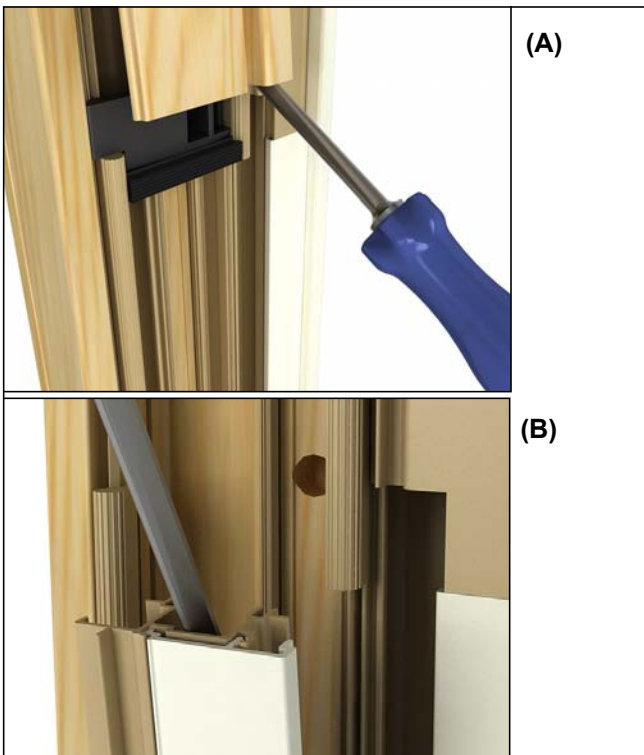


Figure 5

2. Center the window in the opening. Jambs need to be straight and level. Apply #8 X 3" screws until snug through the pre-marked holes, do not over tighten, to permanently secure the unit to the framing members. See figure 6. Do not apply screws to large jamb receiver locating hole.

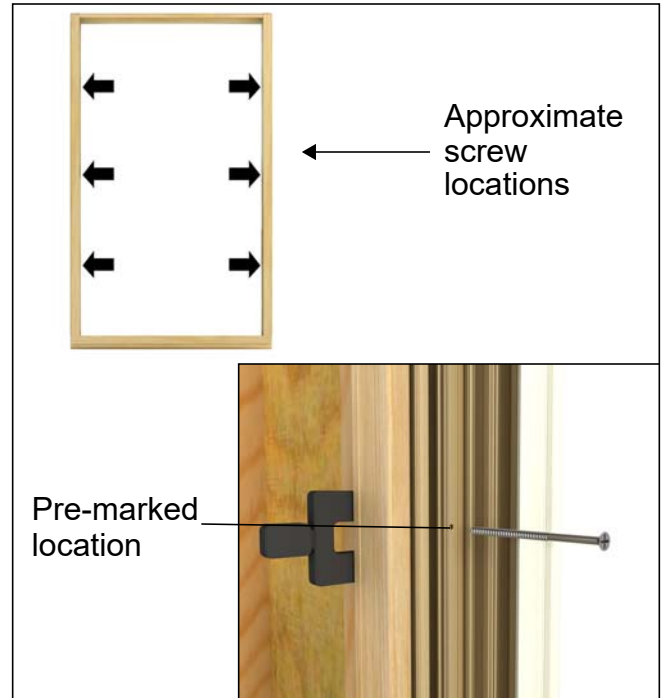


Figure 6

3. Install #8 x 3" screws through the head jamb. See figure 7.



Figure 7

4. Replace the covers. See figure 8. Operation of unit may be affected if components are not seated properly.

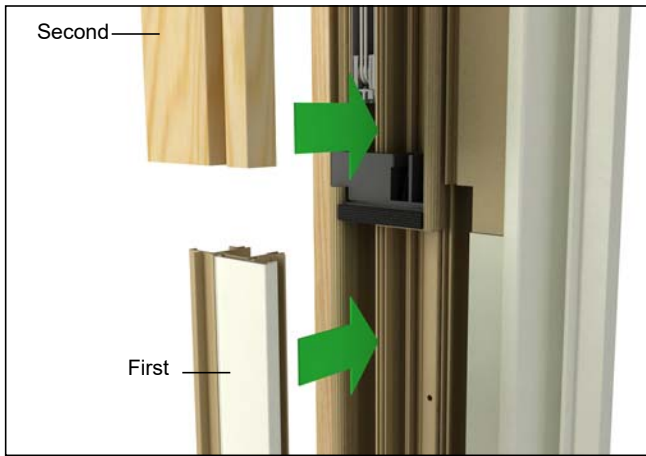


Figure 8



Tip

When trimming unit, make sure that fasteners will not penetrate the balance tube pocket or clutch assemblies.

Structural Brackets

NOTE: For more information on structural bracket installation, please refer to the instructions included with your unit.

1. Structural brackets require spacing 4" (102) from all corners and 13" (330) on center around the perimeter. See figure 9.



Figure 9

2. Wrap brackets around the framing/buck/opening, fasten with two #8 x 1 1/2" screws. Angle the screws approximately 15° away from the window. Always shim above or behind installation brackets. See figure 10.

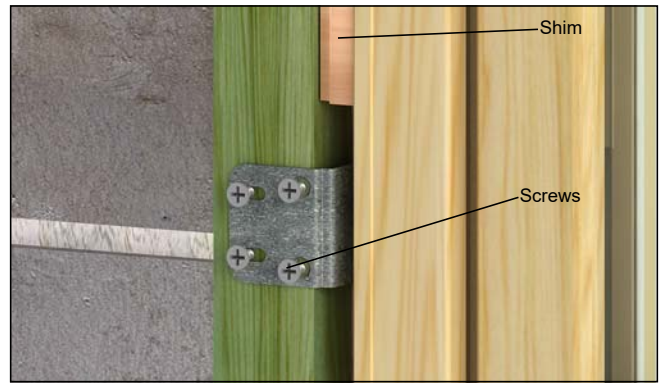


Figure 10

Mulled Units

NOTE: All mulled units require fastening with two screws or structural brackets on each side of the mull joint, no more than 6" (152) from mull joint. Additional structural brackets should be placed at the corners to level unit. See figure 11.

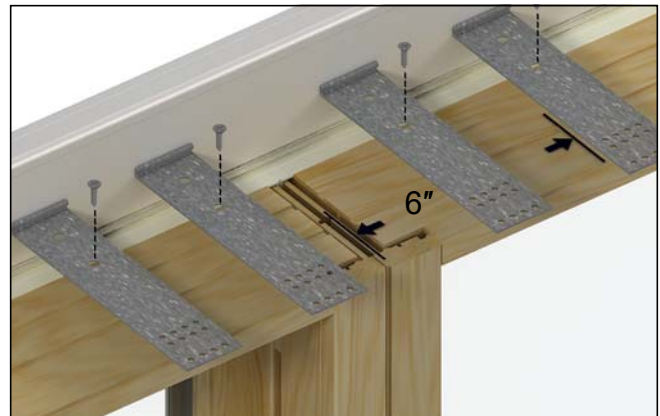


Figure 11