

# Integrity Inswing French Door

## Field Applied Instructions For Hinge Replacement



The following instructions detail the removal, replacement, and handing reversal of Integrity Inswing French Door hinges manufactured 1-17-2005 to present.

### BEFORE YOU BEGIN

- All screw quantities sent with each package are listed in the “Parts Included” section below. Identify the screws needed for your application and door configuration. There may be some screws sent with the package that are not used. XX and X configurations use the following for each hinge: three 5/8” screws, four 1 1/2” screws, and one 2 1/2” screw. OX and XO configurations use the following for each hinge: two 5/8” screws and six 1 1/2” screws.
- Inswing Door hinges are non-handed. Note the handing on the existing hinges as you may need to reverse the handing from what was sent (see **Handing Reversal Section**, if not, skip to the **Removing and Replacing Hinges** section).
- Always replace each hinge one at a time starting at the top (guide hinge).

### YOU WILL NEED TO SUPPLY

- |  |                                |
|--|--------------------------------|
| Safety glasses                           | Flexible putty knife           |
| Cordless/Power Drill and #2 Phillips bit | Pliers (for reversing handing) |

### PARTS INCLUDED

| Illustration | Description  | Qty             | Qty         |
|--------------|--|-----------------|-------------|
|              |  | 6-5/6-8 Heights | 8-0 Heights |
|              | Set Hinge (vertical adjustment feature)<br><i>NOTE: Must be placed at middle hinge location on 6/5 and 6/8 heights and one of the two middle hinge locations on 8/0 heights.</i> | 1               | 1           |
|              | Guide Hinge (horizontal adjustment feature)  | 2               | 3           |
|              | #8x5/8” Phillips pan head screws   | 9               | 12          |
|              | #8x1 1/2” Phillips pan head screws   | 18              | 24          |
|              | #8x 2 1/2” Phillips pan head screws  | 3               | 4           |

*NOTE: Refer to the Integrity Parts and Service Manual for replacement part numbers.*

### HANDING REVERSAL

- To reverse the handing on your hinges, simply pull the pin out from the hinge with a pliers or similar tool. See figure 1a.
- Spin the assembly. See figure 1b.
- Insert the pin on the opposite end. Lightly tap with mallet or hammer until fully seated. See figure 1c.

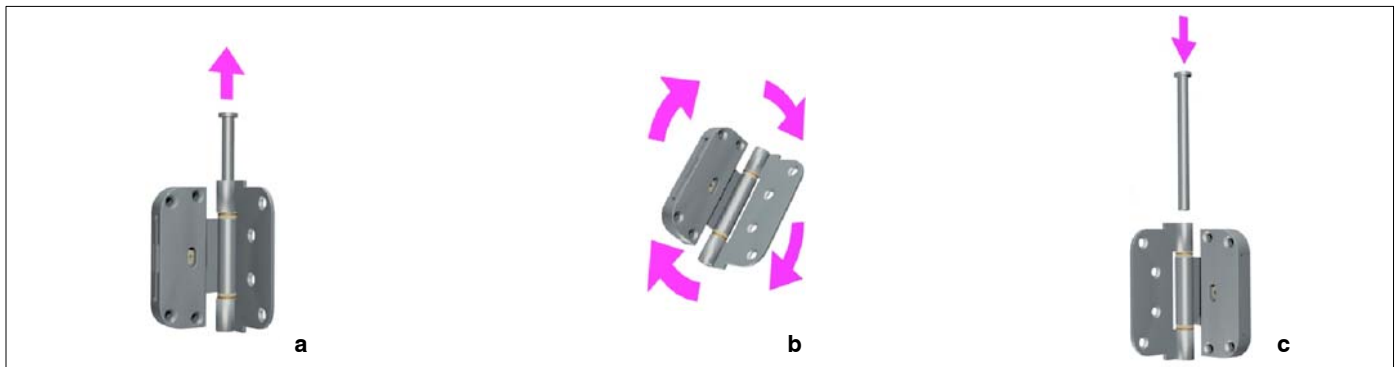


Figure 1

## REMOVING AND REPLACING HINGES

1. Unlock and open panel fully to expose hinges.
2. When replacing the hinges on your Integrity Inswing French door, always replace each hinge one at a time, starting at the top (guide hinge).
3. Using a power driver/drill remove the #8 screws fastening the flat leaf of the hinge to the stationary panel or jamb. See illustration 2a. You can discard the screws as they will not be reused but note what length and which hole each screw is fastened. When all screws are removed from the flat leaf, the hinge spacer will probably slide down to the next hinge (OX/XO configurations only).
4. Remove the #8 x 1 1/2" screws fastening the hinge to the active panel. See illustration 2b.

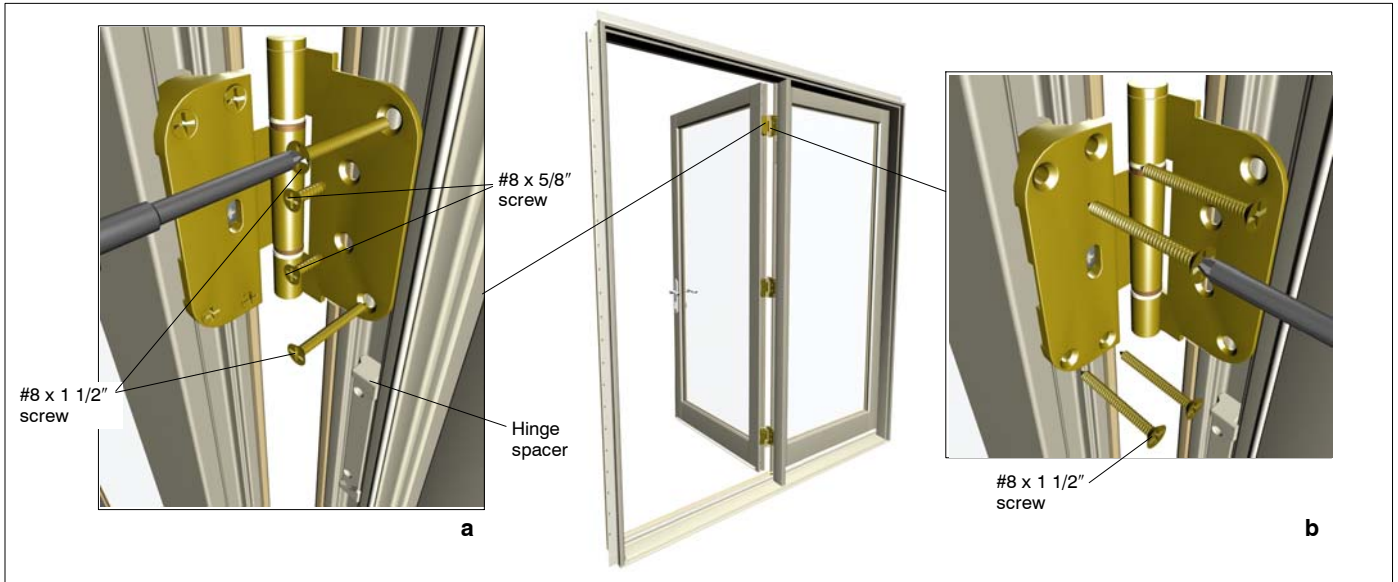


Figure 2: XO door shown (exterior view)

5. Fasten the new hinge to the active panel with four (4) of the 1 1/2" screws.
6. On OX or XO configurations, slide the hinge spacer up until it matches the original holes. Place the flat leaf of the new hinge so that its holes line up with those on the spacer. Fasten the hinge to the stationary panel or jamb with the screws provided. (The 1 1/2" screws go through the spacer while the 5/8" screws go through the middle holes.)
7. On XX or X configurations fasten the hinge to the jamb with three (3) of the 5/8" screws and one (1) 2 1/2" screw which will be driven into the rough opening. See figure 3a.
8. Move on to the next hinge and work your way down the door.



The middle "set" hinge has a vertical adjustment feature. When replacing this hinge you may have to adjust the height by turning the Phillips head screw slightly one way or the other to get the holes on the hinge to line up with those on the panel. See illustration 3b.

Figure 3: XX door shown (exterior view)