

Both Sash Stationary for CUSH-NG 2.0 and CUSHRT-NG 2.0 Installation Instruction

This instruction is for installing a sash limiter for a both sash stationary unit on a CUSH-NG 2.0 and CUSHRT-NG 2.0 window.

1. Both Sash Stationary Kit includes items shown in Figure 1.

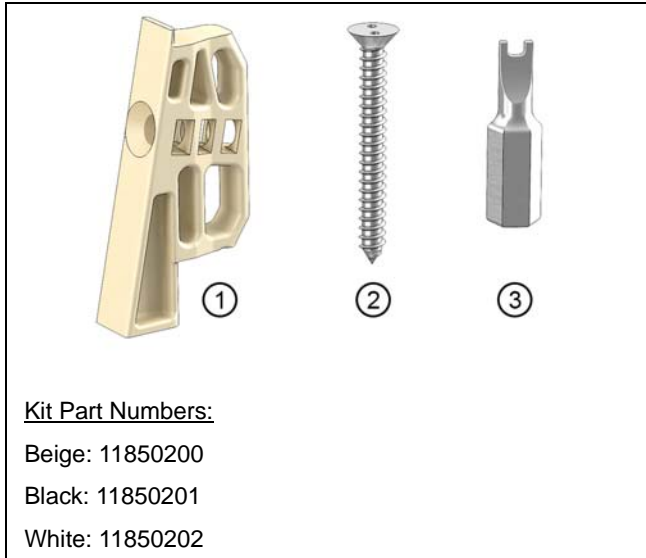


Figure 1

1	2-Sash limiters
2	2-#6 x 1 1/4" screws
3	1-#6 Spanner drill bit

NOTE: Limiter and fastener can be installed with the sash removed to provide more clearance.

2. Insert sash limiter into jamb. See Figure 2.



Figure 2

CAUTION!

Hand tools are recommended for the next step, using a power tool could damage the covers.

3. Fasten #6 x 1 1/4" screw through sash limiter. See Figure 3.



Figure 3