

NOTE: Retrofit door panel to accept 2002 "wide option" handle set.

YOU WILL NEED TO SUPPLY

Safety glasses
 Phillips screwdriver
 Drill w/ 13/32" bit (.402)
 Lead pencil
 Tape measure



1. Remove old handle and locking hardware from stile. See figure 1.



Figure 1

2. Measure and mark a point 31 5/8" up from the bottom of the stile and 2 3/8" in from the edge of the locking stile. See figure 2.
3. Measure and mark another point 42 7/8" up from the bottom of the stile and 2 3/8" in from the edge of the locking stile. See figure 2.
4. Measure the distance between the two marks to ensure that they are 11 1/4" apart.
5. Recheck measurements for accuracy before proceeding.



Place the new handle up against the stile and insert the lock actuator into the lock. Check if the marked holes line up with the handle before drilling.

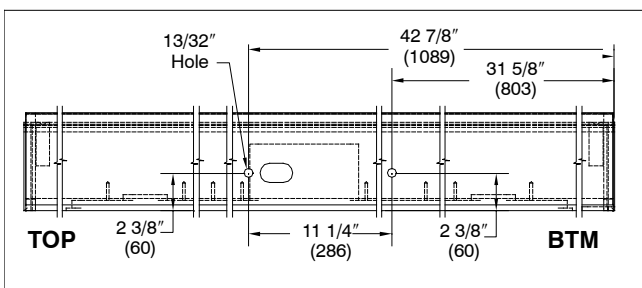


Figure 2

19913990

6. Drill a hole at both marked locations using the 13/32" drill bit. Wipe stile clean of debris.
7. Re-install locking hardware into stile and secure with screws. See figure 3.



Figure 3

8. Insert lock actuator into lock. See figure 4.



Figure 4

9. Install new handle onto stile and fasten with color matched screws. See figure 5.



10. Operate locking mechanism and check for smooth operation. If necessary, adjust and/or lubricate.