

Wood Ultimate Double Hung Round Top

| | |
|---|----|
| Unit Features..... | 1 |
| Minimum and Maximum Guidelines/Certified Sizes and Ratings..... | 2 |
| Measurement Conversions | 3 |
| Egress and Vent Openings: Standard Sill Liner..... | 4 |
| Egress and Vent Openings: High Performance Sill Liner..... | 5 |
| Standard Unit Measurements: RT2..... | 6 |
| Standard Unit Measurements: RT6 - Eyebrow Above Springline | 7 |
| Section Details: Ultimate Single Hung Round Top - Operating..... | 9 |
| Section Details: Ultimate Double Hung Round Top - Operating | 10 |
| Section Details: Transom | 11 |
| Section Details: 1 5/8" Picture..... | 12 |
| Section Details: 2" Picture | 13 |
| Section Details: Operator with Cedar Dress Option | 14 |
| Section Details: 1 5/8" Picture with Cedar Dress Option..... | 15 |

Wood Ultimate Double Hung Round Top

Unit Features

Wood Ultimate Double Hung Round Top: WUDHRT

Wood Ultimate Single Hung Round Top: WUSHRT

Wood Ultimate Double Hung Round Top Picture: WUDHRTP

Wood Ultimate Double Hung Round Top Transom: WUDHR TT

Operating Hardware:

- Balance system: Coil spring block and tackle with nylon cord and fiber filled nylon clutch.
- Jamb carrier: Vinyl extrusion with wood and aluminum insert. Color: Beige
- Lock: High pressure zinc die-cast cam lock and keeper.
 - Color: Satin Taupe with optional colors: White, Brass, Satin Chrome, Antique Brass, Bronze, Oil Rubbed Bronze, Satin Nickel
- Optional window opening control device

Optional Glass

- 1" Tripane Low E1 outer piece and Low E1 Argon inner piece
- 1" Tripane Low E1 outer piece and Low E1 Krypton-Argon inner piece
- 1" Tripane Low E2 outer piece and Low E2 Argon inner piece
- 1" Tripane Low E2 outer piece and Low E2 Krypton-Argon inner piece
- 1" Tripane Low E3 outer piece and Low E1 Argon inner piece
- 1" Tripane Low E3 outer piece and Low E1 Krypton-Argon inner piece

Minimum and Maximum Guidelines/Certified Sizes and Ratings

| Minimum and Maximum Guidelines - Operable Units | | | | | | | | | | | |
|---|--|------------------------|-------|---|--------|------------------------|--------|--------|---|--------|--------|
| Unit Type | | Min Rough Opening Size | | | | Max Rough Opening Size | | | | | |
| | | in | mm | x | in | mm | in | mm | x | in | mm |
| WUDH RT | Variation 5 and 6 | 14 3/8 | (365) | x | 33 | (838) | 46 3/8 | (1178) | x | 89 1/2 | (2273) |
| | RT2, RT6, RT30, RT9, RT10, RT21 - RT24, RT33, RT34, RT45, RT46 | 14 3/8 | (365) | x | 25 3/8 | (645) | 46 3/8 | (1178) | x | 89 1/2 | (2273) |

| Minimum and Maximum Guidelines - Transom Units | | | | | | | | | | | |
|--|-------------|------------------------|-------|---|---------|------------------------|--------|--------|---|----------|--------|
| Unit Type | | Min Rough Opening Size | | | | Max Rough Opening Size | | | | | |
| | | in | mm | x | in | mm | in | mm | x | in | mm |
| WUDHT RT | 1 5/8" Sash | 14 3/8 | (365) | x | 14 3/16 | (360) | 46 3/8 | (1178) | x | 76 3/8 | (1940) |
| | 2" Sash | 14 3/8 | (365) | x | 14 3/16 | (360) | 76 | (1930) | x | 89 13/32 | (2271) |

| Minimum and Maximum Guidelines - Picture Unit | | | | | | | | | | | |
|---|-------------|------------------------|-------|---|--------|------------------------|--------|--------|---|----------|--------|
| Unit Type | | Min Rough Opening Size | | | | Max Rough Opening Size | | | | | |
| | | in | mm | x | in | mm | in | mm | x | in | mm |
| WUDHP RT | 1 5/8" Sash | 14 3/8 | (365) | x | 25 7/8 | (657) | 46 3/8 | (1178) | x | 77 15/32 | (1968) |
| | 2" Sash | 14 3/8 | (365) | x | 25 7/8 | (657) | 76 | (1930) | x | 90 1/2 | (2299) |

| Certified Sizes and Ratings | | | | |
|-----------------------------|--------------|----|-------------|--------|
| Unit Type | Frame Height | | Frame Width | |
| | in | mm | in | mm |
| | WUDH RT | 81 | (2057) | 45 3/8 |
| LC-PG30-H | | | | |

| Certified Sizes and Ratings | | | | |
|-----------------------------|--------------|----|-------------|----|
| Unit Type | Frame Height | | Frame Width | |
| | in | mm | in | mm |
| | WUDHT RT | 90 | (2286) | 75 |
| CW-PG60-FW | | | | |

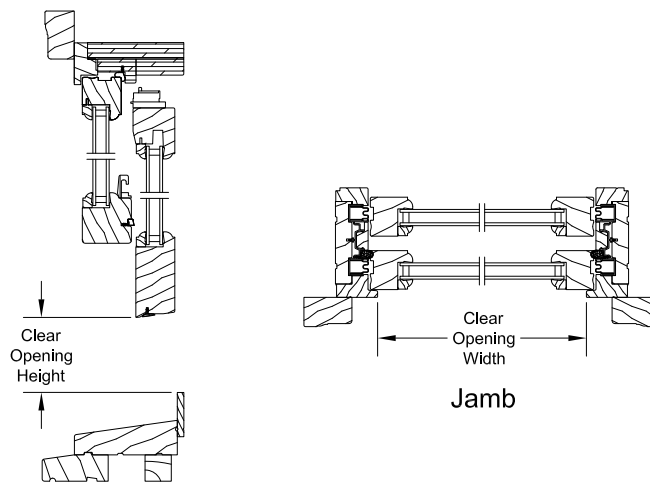
| Certified Sizes and Ratings | | | | |
|-----------------------------|--------------|----|-------------|----|
| Unit Type | Frame Height | | Frame Width | |
| | in | mm | in | mm |
| | WUDHP RT | 90 | (2286) | 75 |
| CW-PG60-FW | | | | |

Wood Ultimate Double Hung Round Top

Measurement Conversions

Scale: 1 1/2" = 1' 0"

| Double Hung Operating Unit | | | | | | |
|----------------------------|-------------------|-----------|-----------|--------|-----------|-----------|
| Unit Measurements | | Width | | Height | | |
| From | To | | | | | |
| Rough Opening | | in | mm | | in | mm |
| OM of Frame | Rough Opening | + 1 | (25) | | + 1/2 | (13) |
| Masonry Opening w/BMC | Rough Opening | -2 1/8 | (54) | | -1 1/16 | (27) |
| Top Sash | | in | mm | | in | mm |
| OM of Frame | OM of Top Sash | -2 29/32 | (74) | ÷ 2 | -1 5/16 | (33) |
| Bottom Sash | | in | mm | | in | mm |
| OM of Frame | OM of Bottom Sash | -2 29/32 | (74) | ÷ 2 | + 7/16 | (11) |
| Glass | | in | mm | | in | mm |
| Daylight Opening | Glass | + 1 1/16 | (27) | | + 1 1/16 | (27) |
| Screen | | in | mm | | in | mm |
| OM of Frame | OM of Screen | -2 1/16 | (52) | | -1 7/8 | (48) |
| Daylight Opening | OM of Screen | + 4 3/8 | (111) | × 2 | + 8 5/8 | (219) |
| Half Screen | | in | mm | | in | mm |
| OM of Frame | OM of Screen | -2 1/16 | (52) | ÷ 2 | -3/16 | (05) |
| Daylight Opening | OM of Screen | + 4 3/8 | (111) | | + 5 1/16 | (129) |
| Combination | | in | mm | | in | mm |
| OM of Frame | OM of Combination | -1 15/16 | (49) | | -1 25/32 | (45) |
| Daylight Opening | OM of Combination | + 4 1/2 | (114) | × 2 | + 8 23/32 | (221) |



Head Jamb and Sill

Wood Ultimate Double Hung Round Top

Egress and Vent Openings: Standard Sill Liner

| CN | Opening Width | | Opening Height Std. Sill Liner | | Egress Opening | | CN | Opening Width | | Opening Height Std. Sill Liner | | Egress Opening | |
|--------|---------------|-------|--------------------------------|-------|-----------------|----------------|--------|---------------|--------|--------------------------------|-------|-----------------|----------------|
| | ft - in | mm | ft - in | mm | ft ² | m ² | | ft - in | mm | ft - in | mm | ft ² | m ² |
| 2014 | 1-10 1/8 | (561) | 1-1 3/4 | (348) | 2.10 | (0.20) | 3214 | 2-10 1/8 | (866) | 1-1 3/4 | (348) | 3.24 | (0.30) |
| 2016 | 1-10 1/8 | (561) | 1-3 3/4 | (399) | 2.41 | (0.22) | 3216 | 2-10 1/8 | (866) | 1-3 3/4 | (399) | 3.72 | (0.35) |
| 2018 | 1-10 1/8 | (561) | 1-5 3/4 | (450) | 2.72 | (0.25) | 3218 | 2-10 1/8 | (866) | 1-5 3/4 | (450) | 4.19 | (0.39) |
| 2020 | 1-10 1/8 | (561) | 1-7 3/4 | (500) | 3.02 | (0.28) | 3220 | 2-10 1/8 | (866) | 1-7 3/4 | (500) | 4.66 | (0.43) |
| 2022 | 1-10 1/8 | (561) | 1-9 3/4 | (551) | 3.33 | (0.31) | 3222 | 2-10 1/8 | (866) | 1-9 3/4 | (551) | 5.14 | (0.48) |
| 2024 | 1-10 1/8 | (561) | 1-11 3/4 | (602) | 3.64 | (0.34) | 3224 | 2-10 1/8 | (866) | 1-11 3/4 | (602) | 5.61 | (0.52) |
| 2026 | 1-10 1/8 | (561) | 2-1 3/4 | (653) | 3.94 | (0.37) | 3226 E | 2-10 1/8 | (866) | 2-1 3/4 | (653) | 6.08 | (0.57) |
| 2028 | 1-10 1/8 | (561) | 2-3 3/4 | (704) | 4.25 | (0.39) | 3228 E | 2-10 1/8 | (866) | 2-3 3/4 | (704) | 6.56 | (0.61) |
| 2030 | 1-10 1/8 | (561) | 2-5 3/4 | (754) | 4.56 | (0.42) | 3230 E | 2-10 1/8 | (866) | 2-5 3/4 | (754) | 7.03 | (0.65) |
| 2032 | 1-10 1/8 | (561) | 2-7 3/4 | (805) | 4.86 | (0.45) | 3232 E | 2-10 1/8 | (866) | 2-7 3/4 | (805) | 7.50 | (0.70) |
| 2034 | 1-10 1/8 | (561) | 2-9 3/4 | (856) | 5.17 | (0.48) | 3234 E | 2-10 1/8 | (866) | 2-9 3/4 | (856) | 7.98 | (0.74) |
| 2036 | 1-10 1/8 | (561) | 2-11 3/4 | (907) | 5.48 | (0.51) | 3236 E | 2-10 1/8 | (866) | 2-11 3/4 | (907) | 8.45 | (0.79) |
| 2414 | 2-2 1/8 | (663) | 1-1 3/4 | (348) | 2.48 | (0.23) | 3614 | 3-2 1/8 | (967) | 1-1 3/4 | (348) | 3.62 | (0.34) |
| 2416 | 2-2 1/8 | (663) | 1-3 3/4 | (399) | 2.85 | (0.26) | 3616 | 3-2 1/8 | (967) | 1-3 3/4 | (399) | 4.15 | (0.39) |
| 2418 | 2-2 1/8 | (663) | 1-5 3/4 | (450) | 3.21 | (0.30) | 3618 | 3-2 1/8 | (967) | 1-5 3/4 | (450) | 4.68 | (0.44) |
| 2420 | 2-2 1/8 | (663) | 1-7 3/4 | (500) | 3.57 | (0.33) | 3620 | 3-2 1/8 | (967) | 1-7 3/4 | (500) | 5.21 | (0.48) |
| 2422 | 2-2 1/8 | (663) | 1-9 3/4 | (551) | 3.93 | (0.37) | 3622 | 3-2 1/8 | (967) | 1-9 3/4 | (551) | 5.74 | (0.53) |
| 2424 | 2-2 1/8 | (663) | 1-11 3/4 | (602) | 4.29 | (0.40) | 3624 | 3-2 1/8 | (967) | 1-11 3/4 | (602) | 6.27 | (0.58) |
| 2426 | 2-2 1/8 | (663) | 2-1 3/4 | (653) | 4.66 | (0.43) | 3626 E | 3-2 1/8 | (967) | 2-1 3/4 | (653) | 6.80 | (0.63) |
| 2428 | 2-2 1/8 | (663) | 2-3 3/4 | (704) | 5.02 | (0.47) | 3628 E | 3-2 1/8 | (967) | 2-3 3/4 | (704) | 7.33 | (0.68) |
| 2430 | 2-2 1/8 | (663) | 2-5 3/4 | (754) | 5.38 | (0.50) | 3630 E | 3-2 1/8 | (967) | 2-5 3/4 | (754) | 7.86 | (0.73) |
| 2432 E | 2-2 1/8 | (663) | 2-7 3/4 | (805) | 5.74 | (0.53) | 3632 E | 3-2 1/8 | (967) | 2-7 3/4 | (805) | 8.39 | (0.78) |
| 2434 E | 2-2 1/8 | (663) | 2-9 3/4 | (856) | 6.11 | (0.57) | 3634 E | 3-2 1/8 | (967) | 2-9 3/4 | (856) | 8.91 | (0.83) |
| 2436 E | 2-2 1/8 | (663) | 2-11 3/4 | (907) | 6.47 | (0.60) | 3636 E | 3-2 1/8 | (967) | 2-11 3/4 | (907) | 9.44 | (0.88) |
| 2814 | 2-6 1/8 | (764) | 1-1 3/4 | (348) | 2.86 | (0.27) | 4014 | 3-6 1/8 | (1069) | 1-1 3/4 | (348) | 4.01 | (0.37) |
| 2816 | 2-6 1/8 | (764) | 1-3 3/4 | (399) | 3.28 | (0.30) | 4016 | 3-6 1/8 | (1069) | 1-3 3/4 | (399) | 4.59 | (0.43) |
| 2818 | 2-6 1/8 | (764) | 1-5 3/4 | (450) | 3.70 | (0.34) | 4018 | 3-6 1/8 | (1069) | 1-5 3/4 | (450) | 5.17 | (0.48) |
| 2820 | 2-6 1/8 | (764) | 1-7 3/4 | (500) | 4.12 | (0.38) | 4020 | 3-6 1/8 | (1069) | 1-7 3/4 | (500) | 5.76 | (0.54) |
| 2822 | 2-6 1/8 | (764) | 1-9 3/4 | (551) | 4.53 | (0.42) | 4022 | 3-6 1/8 | (1069) | 1-9 3/4 | (551) | 6.34 | (0.59) |
| 2824 | 2-6 1/8 | (764) | 1-11 3/4 | (602) | 4.95 | (0.46) | 4024 | 3-6 1/8 | (1069) | 1-11 3/4 | (602) | 6.93 | (0.64) |
| 2826 | 2-6 1/8 | (764) | 2-1 3/4 | (653) | 5.37 | (0.50) | 4026 E | 3-6 1/8 | (1069) | 2-1 3/4 | (653) | 7.51 | (0.70) |
| 2828 E | 2-6 1/8 | (764) | 2-3 3/4 | (704) | 5.79 | (0.54) | 4028 E | 3-6 1/8 | (1069) | 2-3 3/4 | (704) | 8.10 | (0.75) |
| 2830 E | 2-6 1/8 | (764) | 2-5 3/4 | (754) | 6.21 | (0.58) | 4030 E | 3-6 1/8 | (1069) | 2-5 3/4 | (754) | 8.68 | (0.81) |
| 2832 E | 2-6 1/8 | (764) | 2-7 3/4 | (805) | 6.62 | (0.62) | 4032 E | 3-6 1/8 | (1069) | 2-7 3/4 | (805) | 9.27 | (0.86) |
| 2834 E | 2-6 1/8 | (764) | 2-9 3/4 | (856) | 7.04 | (0.65) | 4034 E | 3-6 1/8 | (1069) | 2-9 3/4 | (856) | 9.85 | (0.92) |
| 2836 E | 2-6 1/8 | (764) | 2-11 3/4 | (907) | 7.46 | (0.69) | 4036 E | 3-6 1/8 | (1069) | 2-11 3/4 | (907) | 10.44 | (0.97) |

Wood Ultimate Double Hung Round Top

Egress and Vent Openings: High Performance Sill Liner

| CN | Opening Width | | Opening Height HP Sill Liner | | Egress Opening | | CN | Opening Width | | Opening Height HP Sill Liner | | Egress Opening | |
|--------|---------------|-------|---------------------------------|-------|-----------------|----------------|--------|---------------|--------|---------------------------------|-------|-----------------|----------------|
| | ft - in | mm | ft - in | mm | ft ² | m ² | | ft - in | mm | ft - in | mm | ft ² | m ² |
| 2014 | 1-10 1/8 | (561) | 1-0 7/8 | (326) | 1.97 | (0.18) | 3214 | 2-10 1/8 | (866) | 1-0 7/8 | (326) | 3.04 | (0.28) |
| 2016 | 1-10 1/8 | (561) | 1-2 7/8 | (377) | 2.27 | (0.21) | 3216 | 2-10 1/8 | (866) | 1-2 7/8 | (377) | 3.51 | (0.33) |
| 2018 | 1-10 1/8 | (561) | 1-4 7/8 | (427) | 2.58 | (0.24) | 3218 | 2-10 1/8 | (866) | 1-4 7/8 | (427) | 3.98 | (0.37) |
| 2020 | 1-10 1/8 | (561) | 1-6 7/8 | (478) | 2.89 | (0.27) | 3220 | 2-10 1/8 | (866) | 1-6 7/8 | (478) | 4.46 | (0.41) |
| 2022 | 1-10 1/8 | (561) | 1-8 7/8 | (529) | 3.19 | (0.30) | 3222 | 2-10 1/8 | (866) | 1-8 7/8 | (529) | 4.93 | (0.46) |
| 2024 | 1-10 1/8 | (561) | 1-10 7/8 | (580) | 3.50 | (0.33) | 3224 | 2-10 1/8 | (866) | 1-10 7/8 | (580) | 5.40 | (0.50) |
| 2026 | 1-10 1/8 | (561) | 2-0 7/8 | (631) | 3.81 | (0.35) | 3226 E | 2-10 1/8 | (866) | 2-0 7/8 | (631) | 5.88 | (0.55) |
| 2028 | 1-10 1/8 | (561) | 2-2 7/8 | (681) | 4.12 | (0.38) | 3228 E | 2-10 1/8 | (866) | 2-2 7/8 | (681) | 6.35 | (0.59) |
| 2030 | 1-10 1/8 | (561) | 2-4 7/8 | (732) | 4.42 | (0.41) | 3230 E | 2-10 1/8 | (866) | 2-4 7/8 | (732) | 6.82 | (0.63) |
| 2032 | 1-10 1/8 | (561) | 2-6 7/8 | (783) | 4.73 | (0.44) | 3232 E | 2-10 1/8 | (866) | 2-6 7/8 | (783) | 7.30 | (0.68) |
| 2034 | 1-10 1/8 | (561) | 2-8 7/8 | (834) | 5.04 | (0.47) | 3234 E | 2-10 1/8 | (866) | 2-8 7/8 | (834) | 7.77 | (0.72) |
| 2036 | 1-10 1/8 | (561) | 2-10 7/8 | (885) | 5.34 | (0.50) | 3236 E | 2-10 1/8 | (866) | 2-10 7/8 | (885) | 8.24 | (0.77) |
| 2414 | 2-2 1/8 | (663) | 1-0 7/8 | (326) | 2.32 | (0.22) | 3614 | 3-2 1/8 | (967) | 1-0 7/8 | (326) | 3.39 | (0.32) |
| 2416 | 2-2 1/8 | (663) | 1-2 7/8 | (377) | 2.69 | (0.25) | 3616 | 3-2 1/8 | (967) | 1-2 7/8 | (377) | 3.92 | (0.36) |
| 2418 | 2-2 1/8 | (663) | 1-4 7/8 | (427) | 3.05 | (0.28) | 3618 | 3-2 1/8 | (967) | 1-4 7/8 | (427) | 4.45 | (0.41) |
| 2420 | 2-2 1/8 | (663) | 1-6 7/8 | (478) | 3.41 | (0.32) | 3620 | 3-2 1/8 | (967) | 1-6 7/8 | (478) | 4.98 | (0.46) |
| 2422 | 2-2 1/8 | (663) | 1-8 7/8 | (529) | 3.77 | (0.35) | 3622 | 3-2 1/8 | (967) | 1-8 7/8 | (529) | 5.51 | (0.51) |
| 2424 | 2-2 1/8 | (663) | 1-10 7/8 | (580) | 4.14 | (0.38) | 3624 | 3-2 1/8 | (967) | 1-10 7/8 | (580) | 6.04 | (0.56) |
| 2426 | 2-2 1/8 | (663) | 2-0 7/8 | (631) | 4.50 | (0.42) | 3626 E | 3-2 1/8 | (967) | 2-0 7/8 | (631) | 6.57 | (0.61) |
| 2428 | 2-2 1/8 | (663) | 2-2 7/8 | (681) | 4.86 | (0.45) | 3628 E | 3-2 1/8 | (967) | 2-2 7/8 | (681) | 7.10 | (0.66) |
| 2430 | 2-2 1/8 | (663) | 2-4 7/8 | (732) | 5.22 | (0.49) | 3630 E | 3-2 1/8 | (967) | 2-4 7/8 | (732) | 7.63 | (0.71) |
| 2432 | 2-2 1/8 | (663) | 2-6 7/8 | (783) | 5.59 | (0.52) | 3632 E | 3-2 1/8 | (967) | 2-6 7/8 | (783) | 8.15 | (0.76) |
| 2434 E | 2-2 1/8 | (663) | 2-8 7/8 | (834) | 5.95 | (0.55) | 3634 E | 3-2 1/8 | (967) | 2-8 7/8 | (834) | 8.68 | (0.81) |
| 2436 E | 2-2 1/8 | (663) | 2-10 7/8 | (885) | 6.31 | (0.59) | 3636 E | 3-2 1/8 | (967) | 2-10 7/8 | (885) | 9.21 | (0.86) |
| 2814 | 2-6 1/8 | (764) | 1-0 7/8 | (326) | 2.68 | (0.25) | 4014 | 3-6 1/8 | (1069) | 1-0 7/8 | (326) | 3.75 | (0.35) |
| 2816 | 2-6 1/8 | (764) | 1-2 7/8 | (377) | 3.10 | (0.29) | 4016 | 3-6 1/8 | (1069) | 1-2 7/8 | (377) | 4.33 | (0.40) |
| 2818 | 2-6 1/8 | (764) | 1-4 7/8 | (427) | 3.52 | (0.33) | 4018 | 3-6 1/8 | (1069) | 1-4 7/8 | (427) | 4.92 | (0.46) |
| 2820 | 2-6 1/8 | (764) | 1-6 7/8 | (478) | 3.93 | (0.37) | 4020 | 3-6 1/8 | (1069) | 1-6 7/8 | (478) | 5.50 | (0.51) |
| 2822 | 2-6 1/8 | (764) | 1-8 7/8 | (529) | 4.35 | (0.40) | 4022 | 3-6 1/8 | (1069) | 1-8 7/8 | (529) | 6.09 | (0.57) |
| 2824 | 2-6 1/8 | (764) | 1-10 7/8 | (580) | 4.77 | (0.44) | 4024 | 3-6 1/8 | (1069) | 1-10 7/8 | (580) | 6.67 | (0.62) |
| 2826 | 2-6 1/8 | (764) | 2-0 7/8 | (631) | 5.19 | (0.48) | 4026 E | 3-6 1/8 | (1069) | 2-0 7/8 | (631) | 7.26 | (0.67) |
| 2828 | 2-6 1/8 | (764) | 2-2 7/8 | (681) | 5.61 | (0.52) | 4028 E | 3-6 1/8 | (1069) | 2-2 7/8 | (681) | 7.84 | (0.73) |
| 2830 E | 2-6 1/8 | (764) | 2-4 7/8 | (732) | 6.02 | (0.56) | 4030 E | 3-6 1/8 | (1069) | 2-4 7/8 | (732) | 8.43 | (0.78) |
| 2832 E | 2-6 1/8 | (764) | 2-6 7/8 | (783) | 6.44 | (0.60) | 4032 E | 3-6 1/8 | (1069) | 2-6 7/8 | (783) | 9.01 | (0.84) |
| 2834 E | 2-6 1/8 | (764) | 2-8 7/8 | (834) | 6.86 | (0.64) | 4034 E | 3-6 1/8 | (1069) | 2-8 7/8 | (834) | 9.60 | (0.89) |
| 2836 E | 2-6 1/8 | (764) | 2-10 7/8 | (885) | 7.28 | (0.68) | 4036 E | 3-6 1/8 | (1069) | 2-10 7/8 | (885) | 10.18 | (0.95) |

Standard Unit Measurements: RT2

| Standard Double Hung Round Top Unit Measurements | | | | | | |
|--|---------------|--------|----------------------|-------|-------------------------|-------|
| Width | | | | | Height | |
| CN | Rough Opening | | Rough Opening Radius | | Rough Opening w/subsill | |
| | ft - in | mm | ft - in | mm | ft - in | mm |
| 2015 | 2-2 3/8 | (670) | 1-1 3/16 | (335) | 1-1 3/16 | (335) |
| 2417 | 2-6 3/8 | (772) | 1-3 3/16 | (386) | 1-3 3/16 | (386) |
| 2618 | 2-8 3/8 | (822) | 1-4 3/16 | (411) | 1-4 3/16 | (411) |
| 2819 | 2-10 3/8 | (873) | 1-5 3/16 | (437) | 1-5 3/16 | (437) |
| 3020 | 3-0 3/8 | (924) | 1-6 3/16 | (462) | 1-6 3/16 | (462) |
| 3221 | 3-2 3/8 | (975) | 1-7 3/16 | (487) | 1-7 3/16 | (487) |
| 3623 | 3-6 3/8 | (1076) | 1-9 3/16 | (538) | 1-9 3/16 | (538) |
| 4025 | 3-10 3/8 | (1178) | 1-11 3/16 | (589) | 1-11 3/16 | (589) |
| 5027 | 4-3 3/4 | (1314) | 2-1 7/8 | (657) | 2-1 7/8 | (657) |
| 5831 | 4-11 3/4 | (1518) | 2-5 7/8 | (759) | 2-5 7/8 | (759) |
| 6635 | 5-7 3/4 | (1721) | 2-9 7/8 | (860) | 2-9 7/8 | (860) |
| 7439 | 6-3 3/4 | (1924) | 3-1 7/8 | (962) | 3-1 7/8 | (962) |

Wood Ultimate Double Hung Round Top

Standard Unit Measurements: RT6 - Eyebrow Above Springline

| Standard Double Hung Round Top Unit Measurements | | | | | | | | | | |
|--|---------------|-------|----------------------|--------|-------------------------|--------|--------------------------|--------|-----------------------------|--------|
| CN | Width | | | | Height | | | | | |
| | Rough Opening | | Rough Opening Radius | | Rough Opening w/subsill | | Rough Opening Springline | | Rough Opening (Basic Frame) | |
| | ft - in | mm | ft - in | mm | ft - in | mm | ft - in | mm | ft - in | mm |
| 2014 | 2-2 3/8 | (670) | 2-0 1/2 | (622) | 3-5 1/8 | (1045) | 3-1 9/32 | (947) | 3-4 5/8 | (1032) |
| 2016 | 2-2 3/8 | (670) | 2-0 1/2 | (622) | 3-9 1/8 | (1146) | 3-5 9/32 | (1049) | 3-8 5/8 | (1133) |
| 2018 | 2-2 3/8 | (670) | 2-0 1/2 | (622) | 4-1 1/8 | (1248) | 3-9 9/32 | (1150) | 4-0 5/8 | (1235) |
| 2020 | 2-2 3/8 | (670) | 2-0 1/2 | (622) | 4-5 1/8 | (1349) | 4-1 9/32 | (1252) | 4-4 5/8 | (1337) |
| 2022 | 2-2 3/8 | (670) | 2-0 1/2 | (622) | 4-9 1/8 | (1451) | 4-5 9/32 | (1353) | 4-8 5/8 | (1438) |
| 2024 | 2-2 3/8 | (670) | 2-0 1/2 | (622) | 5-1 1/8 | (1553) | 4-9 9/32 | (1455) | 5-0 5/8 | (1540) |
| 2026 | 2-2 3/8 | (670) | 2-0 1/2 | (622) | 5-5 1/8 | (1654) | 5-1 9/32 | (1557) | 5-4 5/8 | (1641) |
| 2028 | 2-2 3/8 | (670) | 2-0 1/2 | (622) | 5-9 1/8 | (1756) | 5-5 9/32 | (1658) | 5-8 5/8 | (1743) |
| 2030 | 2-2 3/8 | (670) | 2-0 1/2 | (622) | 6-1 1/8 | (1857) | 5-9 9/32 | (1760) | 6-0 5/8 | (1845) |
| 2032 | 2-2 3/8 | (670) | 2-0 1/2 | (622) | 6-5 1/8 | (1959) | 6-1 9/32 | (1861) | 6-4 5/8 | (1946) |
| 2034 | 2-2 3/8 | (670) | 2-0 1/2 | (622) | 6-9 1/8 | (2061) | 6-5 9/32 | (1963) | 6-8 5/8 | (2048) |
| 2036 | 2-2 3/8 | (670) | 2-0 1/2 | (622) | 7-1 1/8 | (2162) | 6-9 9/32 | (2065) | 7-0 5/8 | (2149) |
| 2414 | 2-6 3/8 | (772) | 2-0 1/2 | (622) | 3-5 1/8 | (1045) | 3-1 1/4 | (946) | 3-4 5/8 | (1032) |
| 2416 | 2-6 3/8 | (772) | 2-0 1/2 | (622) | 3-9 1/8 | (1146) | 3-5 1/4 | (1048) | 3-8 5/8 | (1133) |
| 2418 | 2-6 3/8 | (772) | 2-0 1/2 | (622) | 4-1 1/8 | (1248) | 3-9 1/4 | (1149) | 4-0 5/8 | (1235) |
| 2420 | 2-6 3/8 | (772) | 2-0 1/2 | (622) | 4-5 1/8 | (1349) | 4-1 1/4 | (1251) | 4-4 5/8 | (1337) |
| 2422 | 2-6 3/8 | (772) | 2-0 1/2 | (622) | 4-9 1/8 | (1451) | 4-5 1/4 | (1353) | 4-8 5/8 | (1438) |
| 2424 | 2-6 3/8 | (772) | 2-0 1/2 | (622) | 5-1 1/8 | (1553) | 4-9 1/4 | (1454) | 5-0 5/8 | (1540) |
| 2426 | 2-6 3/8 | (772) | 2-0 1/2 | (622) | 5-5 1/8 | (1654) | 5-1 1/4 | (1556) | 5-4 5/8 | (1641) |
| 2428 | 2-6 3/8 | (772) | 2-0 1/2 | (622) | 5-9 1/8 | (1756) | 5-5 1/4 | (1657) | 5-8 5/8 | (1743) |
| 2430 | 2-6 3/8 | (772) | 2-0 1/2 | (622) | 6-1 1/8 | (1857) | 5-9 1/4 | (1759) | 6-0 5/8 | (1845) |
| 2432 | 2-6 3/8 | (772) | 2-0 1/2 | (622) | 6-5 1/8 | (1959) | 6-1 1/4 | (1861) | 6-4 5/8 | (1946) |
| 2434 | 2-6 3/8 | (772) | 2-0 1/2 | (622) | 6-9 1/8 | (2061) | 6-5 1/4 | (1962) | 6-8 5/8 | (2048) |
| 2436 | 2-6 3/8 | (772) | 2-0 1/2 | (622) | 7-1 1/8 | (2162) | 6-9 1/4 | (2064) | 7-0 5/8 | (2149) |
| 2814 | 2-10 3/8 | (873) | 2-6 1/2 | (775) | 3-5 1/8 | (1045) | 3-1 9/32 | (947) | 3-4 5/8 | (1032) |
| 2816 | 2-10 3/8 | (873) | 2-6 1/2 | (775) | 3-9 1/8 | (1146) | 3-5 9/32 | (1049) | 3-8 5/8 | (1133) |
| 2818 | 2-10 3/8 | (873) | 2-6 1/2 | (775) | 4-1 1/8 | (1248) | 3-9 9/32 | (1150) | 4-0 5/8 | (1235) |
| 2820 | 2-10 3/8 | (873) | 2-6 1/2 | (775) | 4-5 1/8 | (1349) | 4-1 9/32 | (1252) | 4-4 5/8 | (1337) |
| 2822 | 2-10 3/8 | (873) | 2-6 1/2 | (775) | 4-9 1/8 | (1451) | 4-5 9/32 | (1353) | 4-8 5/8 | (1438) |
| 2824 | 2-10 3/8 | (873) | 2-6 1/2 | (775) | 5-1 1/8 | (1553) | 4-9 9/32 | (1455) | 5-0 5/8 | (1540) |
| 2826 | 2-10 3/8 | (873) | 2-6 1/2 | (775) | 5-5 1/8 | (1654) | 5-1 9/32 | (1557) | 5-4 5/8 | (1641) |
| 2828 | 2-10 3/8 | (873) | 2-6 1/2 | (775) | 5-9 1/8 | (1756) | 5-5 9/32 | (1658) | 5-8 5/8 | (1743) |
| 2830 | 2-10 3/8 | (873) | 2-6 1/2 | (775) | 6-1 1/8 | (1857) | 5-9 9/32 | (1760) | 6-0 5/8 | (1845) |
| 2832 | 2-10 3/8 | (873) | 2-6 1/2 | (775) | 6-5 1/8 | (1959) | 6-1 9/32 | (1861) | 6-4 5/8 | (1946) |
| 2834 | 2-10 3/8 | (873) | 2-6 1/2 | (775) | 6-9 1/8 | (2061) | 6-5 9/32 | (1963) | 6-8 5/8 | (2048) |
| 2836 | 2-10 3/8 | (873) | 2-6 1/2 | (775) | 7-1 1/8 | (2162) | 6-9 9/32 | (2065) | 7-0 5/8 | (2149) |
| 3214 | 3-2 3/8 | (975) | 3-4 1/2 | (1029) | 3-5 1/8 | (1045) | 3-1 5/16 | (948) | 3-4 5/8 | (1032) |
| 3216 | 3-2 3/8 | (975) | 3-4 1/2 | (1029) | 3-9 1/8 | (1146) | 3-5 5/16 | (1049) | 3-8 5/8 | (1133) |
| 3218 | 3-2 3/8 | (975) | 3-4 1/2 | (1029) | 4-1 1/8 | (1248) | 3-9 5/16 | (1151) | 4-0 5/8 | (1235) |
| 3220 | 3-2 3/8 | (975) | 3-4 1/2 | (1029) | 4-5 1/8 | (1349) | 4-1 5/16 | (1253) | 4-4 5/8 | (1337) |
| 3222 | 3-2 3/8 | (975) | 3-4 1/2 | (1029) | 4-9 1/8 | (1451) | 4-5 5/16 | (1354) | 4-8 5/8 | (1438) |
| 3224 | 3-2 3/8 | (975) | 3-4 1/2 | (1029) | 5-1 1/8 | (1553) | 4-9 5/16 | (1456) | 5-0 5/8 | (1540) |
| 3226 | 3-2 3/8 | (975) | 3-4 1/2 | (1029) | 5-5 1/8 | (1654) | 5-1 5/16 | (1557) | 5-4 5/8 | (1641) |
| 3228 | 3-2 3/8 | (975) | 3-4 1/2 | (1029) | 5-9 1/8 | (1756) | 5-5 5/16 | (1659) | 5-8 5/8 | (1743) |
| 3230 | 3-2 3/8 | (975) | 3-4 1/2 | (1029) | 6-1 1/8 | (1857) | 5-9 5/16 | (1761) | 6-0 5/8 | (1845) |
| 3232 | 3-2 3/8 | (975) | 3-4 1/2 | (1029) | 6-5 1/8 | (1959) | 6-1 5/16 | (1862) | 6-4 5/8 | (1946) |
| 3234 | 3-2 3/8 | (975) | 3-4 1/2 | (1029) | 6-9 1/8 | (2061) | 6-5 5/16 | (1964) | 6-8 5/8 | (2048) |
| 3236 | 3-2 3/8 | (975) | 3-4 1/2 | (1029) | 7-1 1/8 | (2162) | 6-9 5/16 | (2065) | 7-0 5/8 | (2149) |

Wood Ultimate Double Hung Round Top

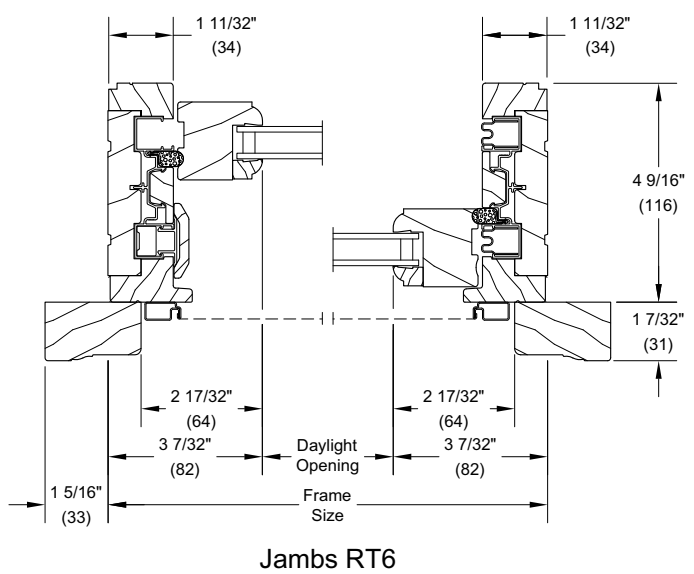
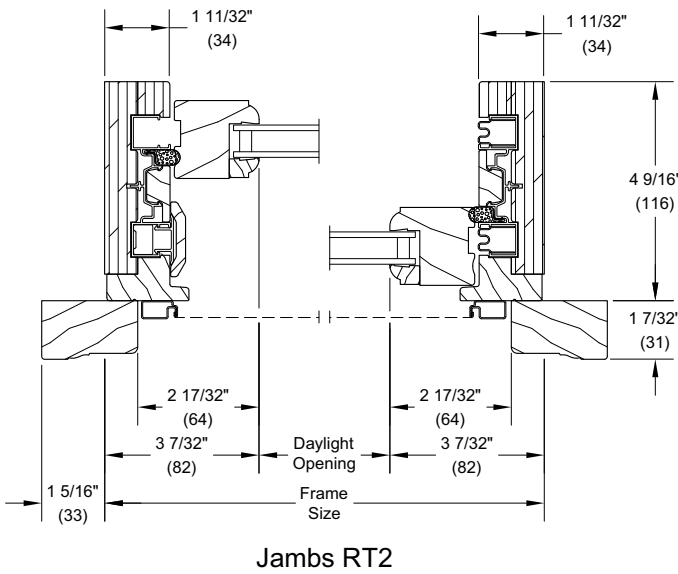
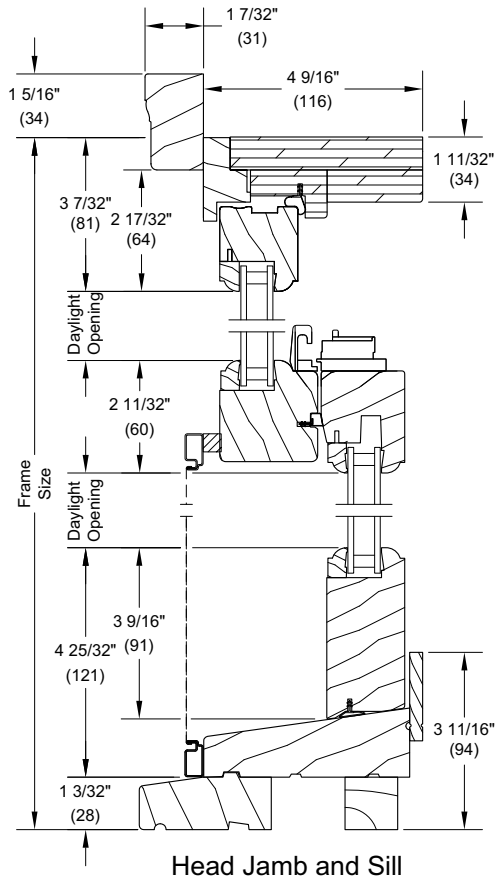
Standard Unit Measurements: RT6 - Eyebrow Above Springline

| Standard Double Hung Round Top Unit Measurements | | | | | | | | | | |
|--|---------------|--------|----------------------|--------|-------------------------|--------|--------------------------|--------|-----------------------------|--------|
| Width | | | | | Height | | | | | |
| CN | Rough Opening | | Rough Opening Radius | | Rough Opening w/subsill | | Rough Opening Springline | | Rough Opening (Basic Frame) | |
| | ft - in | mm | ft - in | mm | ft - in | mm | ft - in | mm | ft - in | mm |
| 3614 | 3-6 3/8 | (1076) | 3-4 1/2 | (1029) | 3-5 1/8 | (1045) | 3-1 9/32 | (947) | 3-4 5/8 | (1032) |
| 3616 | 3-6 3/8 | (1076) | 3-4 1/2 | (1029) | 3-9 1/8 | (1146) | 3-5 9/32 | (1049) | 3-8 5/8 | (1133) |
| 3618 | 3-6 3/8 | (1076) | 3-4 1/2 | (1029) | 4-1 1/8 | (1248) | 3-9 9/32 | (1150) | 4-0 5/8 | (1235) |
| 3620 | 3-6 3/8 | (1076) | 3-4 1/2 | (1029) | 4-5 1/8 | (1349) | 4-1 9/32 | (1252) | 4-4 5/8 | (1337) |
| 3622 | 3-6 3/8 | (1076) | 3-4 1/2 | (1029) | 4-9 1/8 | (1451) | 4-5 9/32 | (1353) | 4-8 5/8 | (1438) |
| 3624 | 3-6 3/8 | (1076) | 3-4 1/2 | (1029) | 5-1 1/8 | (1553) | 4-9 9/32 | (1455) | 5-0 5/8 | (1540) |
| 3626 | 3-6 3/8 | (1076) | 3-4 1/2 | (1029) | 5-5 1/8 | (1654) | 5-1 9/32 | (1557) | 5-4 5/8 | (1641) |
| 3628 | 3-6 3/8 | (1076) | 3-4 1/2 | (1029) | 5-9 1/8 | (1756) | 5-5 9/32 | (1658) | 5-8 5/8 | (1743) |
| 3630 | 3-6 3/8 | (1076) | 3-4 1/2 | (1029) | 6-1 1/8 | (1857) | 5-9 9/32 | (1760) | 6-0 5/8 | (1845) |
| 3632 | 3-6 3/8 | (1076) | 3-4 1/2 | (1029) | 6-5 1/8 | (1959) | 6-1 9/32 | (1861) | 6-4 5/8 | (1946) |
| 3634 | 3-6 3/8 | (1076) | 3-4 1/2 | (1029) | 6-9 1/8 | (2061) | 6-5 9/32 | (1963) | 6-8 5/8 | (2048) |
| 3636 | 3-6 3/8 | (1076) | 3-4 1/2 | (1029) | 7-1 1/8 | (2162) | 6-9 9/32 | (2065) | 7-0 5/8 | (2149) |
| 4014 | 3-10 3/8 | (1178) | 3-4 1/2 | (1029) | 3-5 1/8 | (1045) | 3-1 9/32 | (947) | 3-4 5/8 | (1032) |
| 4016 | 3-10 3/8 | (1178) | 3-4 1/2 | (1029) | 3-9 1/8 | (1146) | 3-5 9/32 | (1049) | 3-8 5/8 | (1133) |
| 4018 | 3-10 3/8 | (1178) | 3-4 1/2 | (1029) | 4-1 1/8 | (1248) | 3-9 9/32 | (1150) | 4-0 5/8 | (1235) |
| 4020 | 3-10 3/8 | (1178) | 3-4 1/2 | (1029) | 4-5 1/8 | (1349) | 4-1 9/32 | (1252) | 4-4 5/8 | (1337) |
| 4022 | 3-10 3/8 | (1178) | 3-4 1/2 | (1029) | 4-9 1/8 | (1451) | 4-5 9/32 | (1353) | 4-8 5/8 | (1438) |
| 4024 | 3-10 3/8 | (1178) | 3-4 1/2 | (1029) | 5-1 1/8 | (1553) | 4-9 9/32 | (1455) | 5-0 5/8 | (1540) |
| 4026 | 3-10 3/8 | (1178) | 3-4 1/2 | (1029) | 5-5 1/8 | (1654) | 5-1 9/32 | (1557) | 5-4 5/8 | (1641) |
| 4028 | 3-10 3/8 | (1178) | 3-4 1/2 | (1029) | 5-9 1/8 | (1756) | 5-5 9/32 | (1658) | 5-8 5/8 | (1743) |
| 4030 | 3-10 3/8 | (1178) | 3-4 1/2 | (1029) | 6-1 1/8 | (1857) | 5-9 9/32 | (1760) | 6-0 5/8 | (1845) |
| 4032 | 3-10 3/8 | (1178) | 3-4 1/2 | (1029) | 6-5 1/8 | (1959) | 6-1 9/32 | (1861) | 6-4 5/8 | (1946) |
| 4034 | 3-10 3/8 | (1178) | 3-4 1/2 | (1029) | 6-9 1/8 | (2061) | 6-5 9/32 | (1963) | 6-8 5/8 | (2048) |
| 4036 | 3-10 3/8 | (1178) | 3-4 1/2 | (1029) | 7-1 1/8 | (2162) | 6-9 9/32 | (2065) | 7-0 5/8 | (2149) |

Wood Ultimate Double Hung Round Top

Section Details: Ultimate Single Hung Round Top - Operating

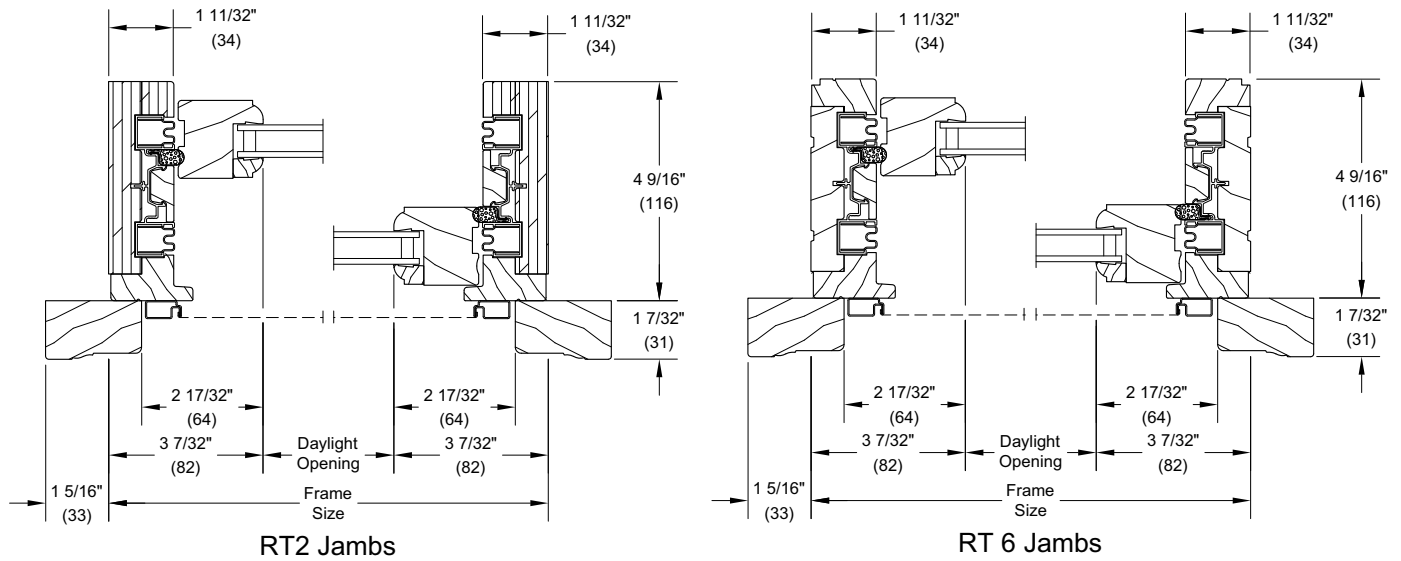
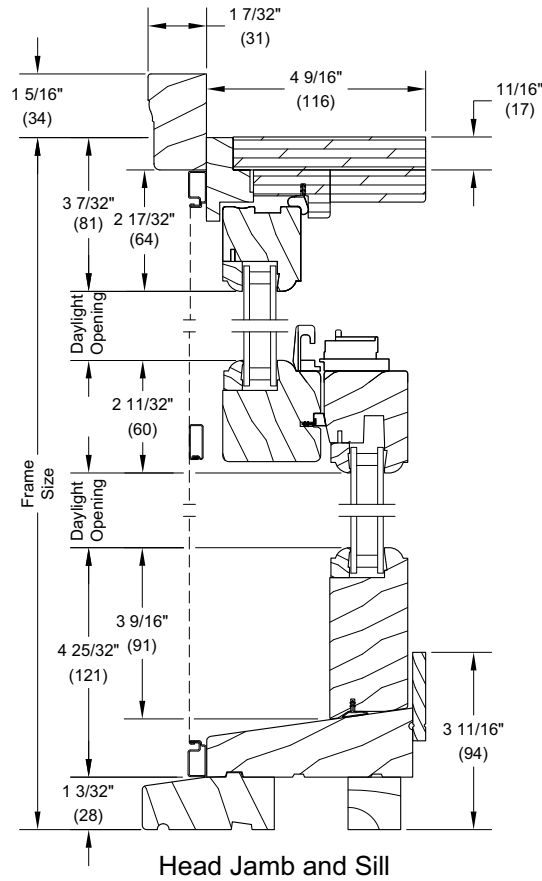
Scale: 3" = 1' 0"



Wood Ultimate Double Hung Round Top

Section Details: Ultimate Double Hung Round Top - Operating

Scale: 3" = 1' 0"

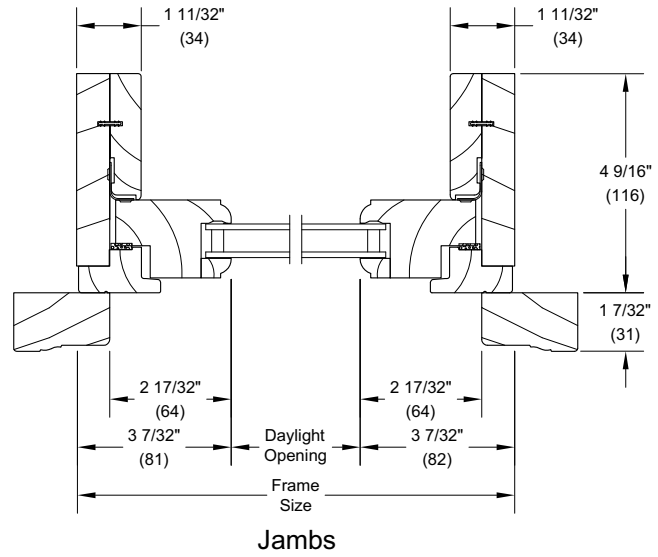
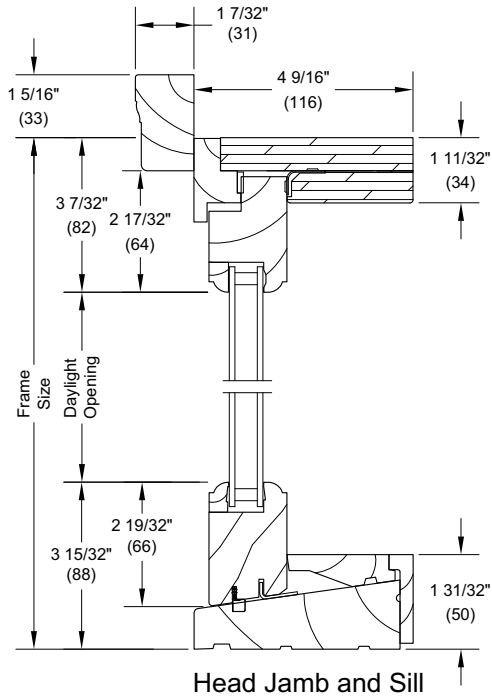


Wood Ultimate Double Hung Round Top

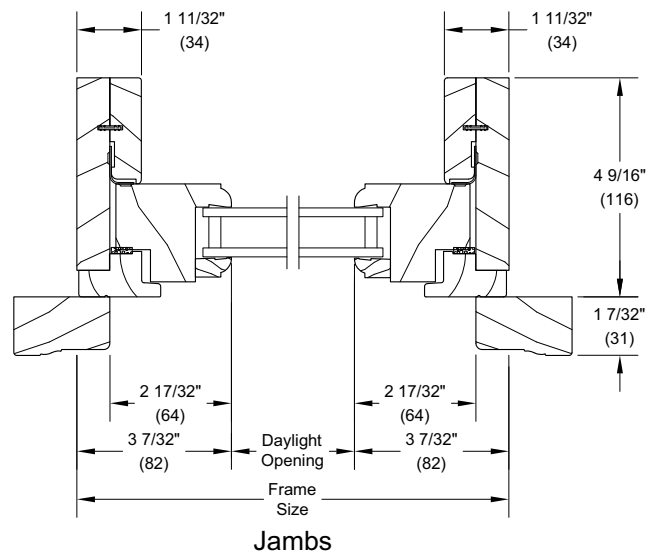
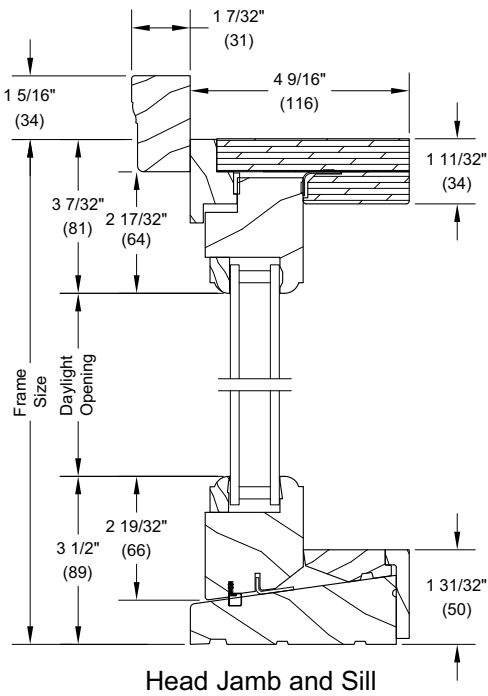
Section Details: Transom

Scale: 3" = 1' 0"

1 5/8" In-Sash Transom



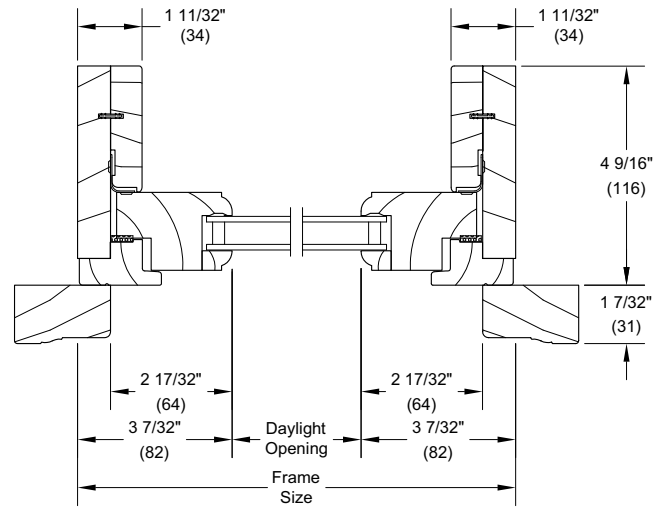
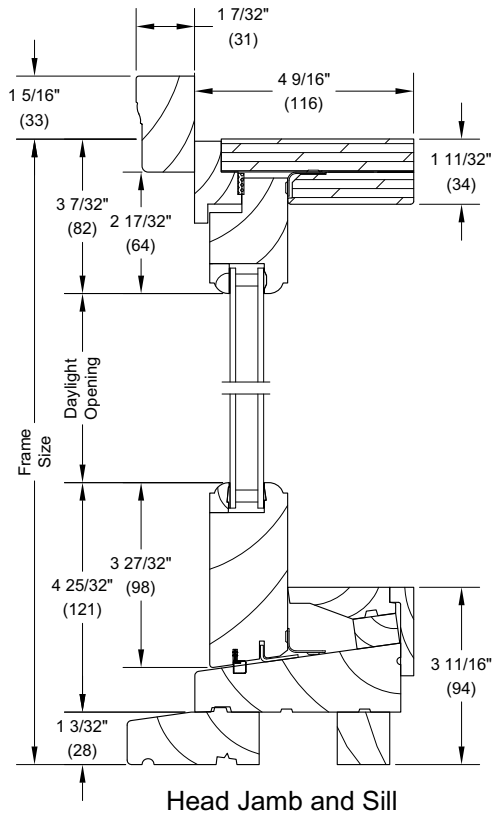
2" In-Sash Transom



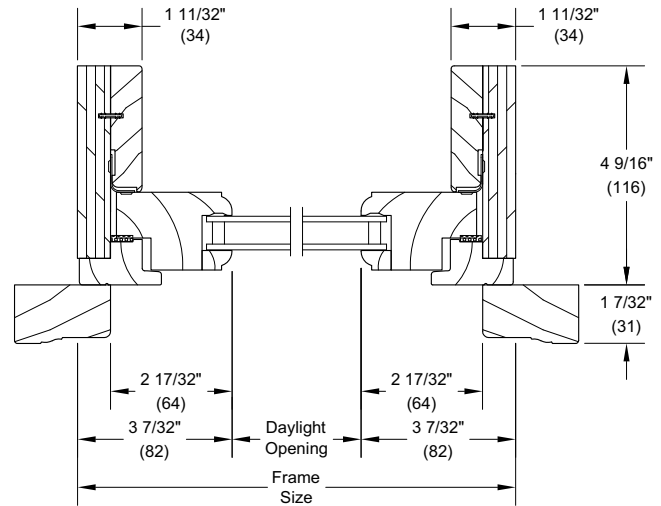
Wood Ultimate Double Hung Round Top

Section Details: 1 5/8" Picture

Scale: 3" = 1' 0"



RT6 Jamb



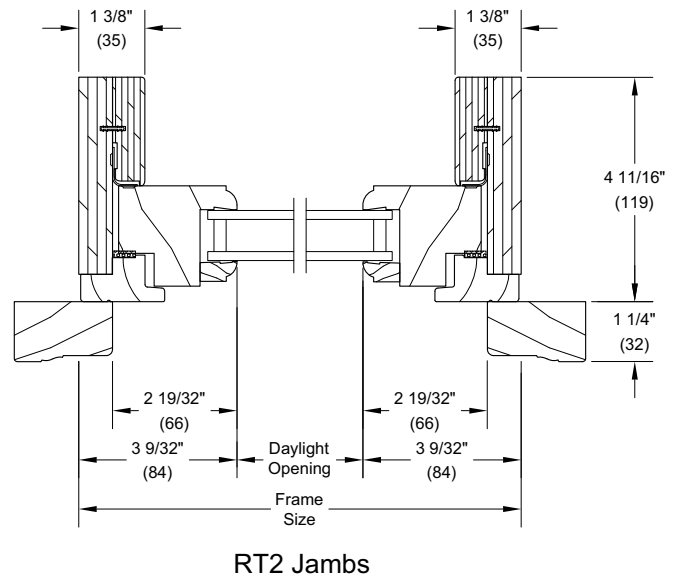
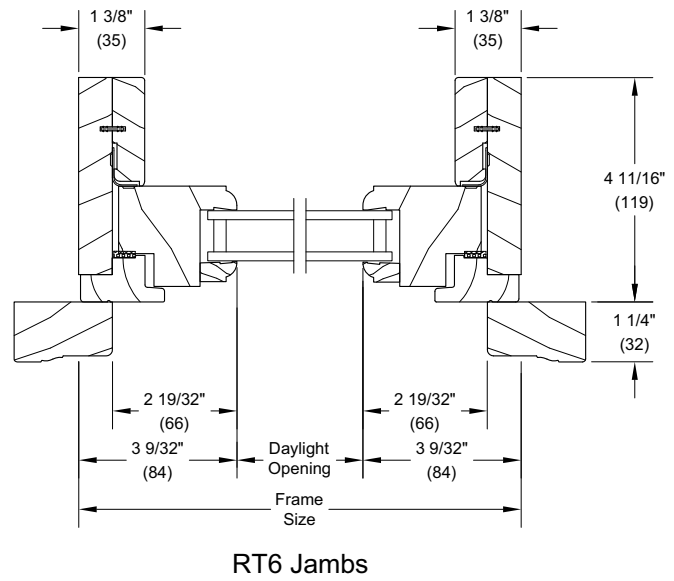
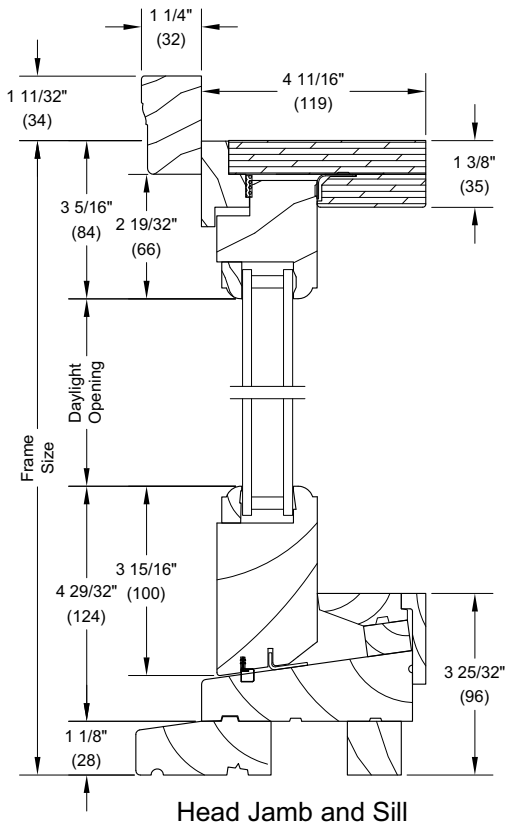
RT2 Jamb

* Total frame is calculated with a subsill. If unit is used as a transom, deduct 1 3/32" (28).

Wood Ultimate Double Hung Round Top

Section Details: 2" Picture

Scale: 3" = 1' 0"

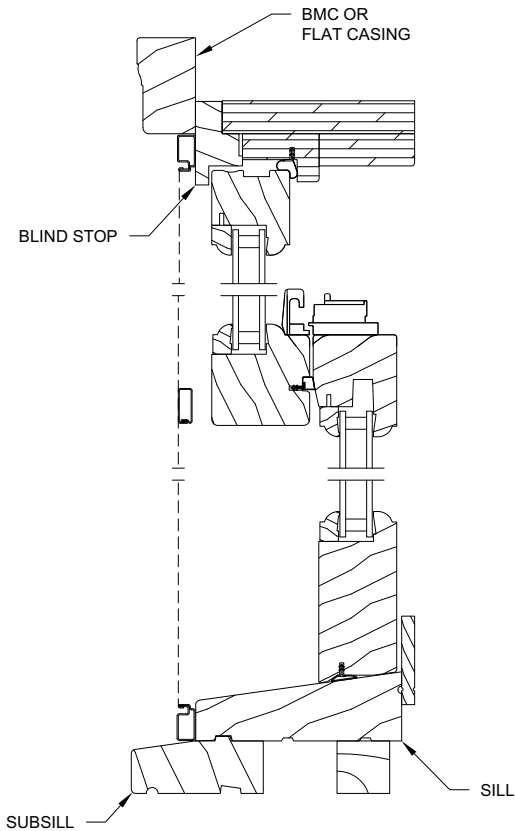


* Total frame is calculated with a subsill. If unit is used as a transom, deduct 1 3/32" (28).

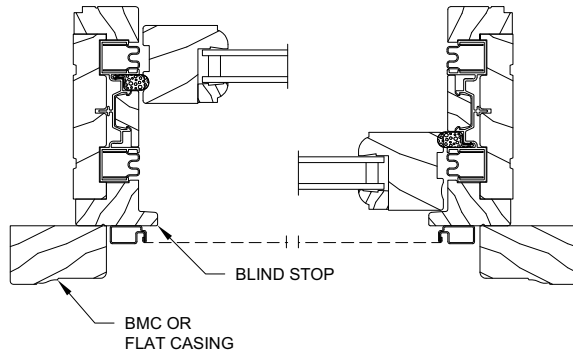
Wood Ultimate Double Hung Round Top

Section Details: Operator with Cedar Dress Option

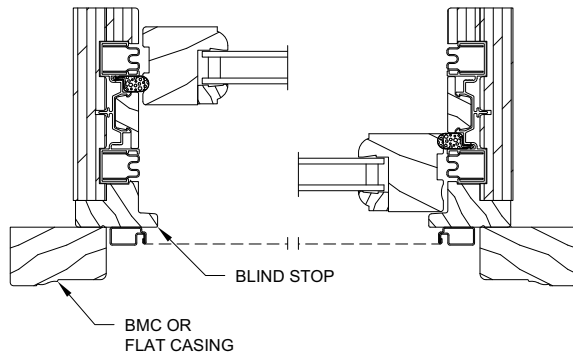
Scale: 3" = 1' 0"



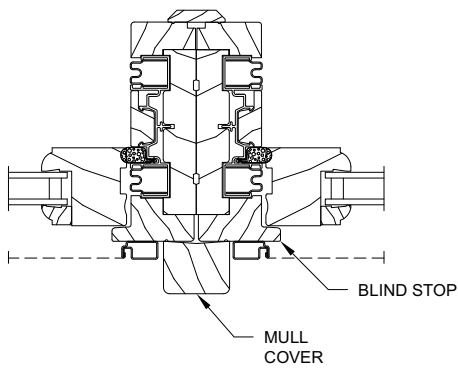
Head Jamb and Sill



RT 6 Jamb



RT2 Jamb



Vertical Mullion Detail

Wood Ultimate Double Hung Round Top

Section Details: 1 5/8" Picture with Cedar Dress Option

Scale: 3" = 1' 0"

