

Wood Ultimate Double Hung Collection

- Unit Features - Wood Ultimate Double Hung 1
- Standard Insulating Glass Divided Lite Options 4
- Standard Single Glaze Divided Lite Options 5
- Optional Interior Square Simulated Divided Lite 6
- Double Hung Variations 7

Wood Ultimate Double Hung Collection

Unit Features - Wood Ultimate Double Hung

Wood Ultimate Double Hung Collection:

Wood Ultimate Double Hung: WUDH
Wood Ultimate Double Hung Picture: WUDHP
Wood Ultimate Double Hung Transom: WUDHT
Wood Ultimate Double Hung Bows and Bays: WUDHBB

Wood Ultimate Round Top Double Hung Collection:

Wood Ultimate Double Hung Round Top: WUDHRT
Wood Ultimate Single Hung Round Top: WUSHRT
Wood Ultimate Double Hung Round Top Picture: WUDHRTP
Wood Ultimate Double Hung Round Top Transom: WUDHRTT

Wood Ultimate Double Hung Magnum Collection:

Wood Ultimate Double Hung Magnum: WUDHM
Wood Ultimate Single Hung Magnum: WUSHM
Wood Ultimate Double Hung Magnum Picture: WUDHMP
Wood Ultimate Double Hung Magnum Transom: WUDHMT

Wood Ultimate Round Top Double Hung Magnum Collection:

Wood Ultimate Double Hung Magnum Round Top: WUDHMRT
Wood Ultimate Single Hung Magnum Round Top: WUSHMRT
Wood Ultimate Double Hung Magnum Round Top Picture: WUDHM RTP
Wood Ultimate Double Hung Magnum Round Top Transom: WUDHMRTT

NOTE: Wood Ultimate Double Hung Round Top Picture and Wood Ultimate Double Hung Magnum Round Top Picture are not available with CE Mark.

NOTE: Bows and Bays are not available with CE Mark from the factory. Bow and Bay kits are available for field mulling.

Standard Frame:

- Frame thickness: 1 1/16"(17)
- Subsill thickness: 1 3/32"(28)
- Frame base (with pre-drilled installation holes in jambs): 4 9/16"(116) from backside of BMC to interior wood face of frame
- 8 degree bevel on sill and subsill
- Curved frames are laminated and/or edge glued pine
- Radius bead is laminated in non finger-jointed pine
- Optional DP50 sill liner maximum size 2830 or 3026

Standard Sash:

- Operating sash thickness: 1 5/8"(41)
- Transom and picture unit sash thickness 1 5/8"(41) or optional 2" (51)
- All measurements are nominal - sash are removable for easy cleaning, service or finishing
 - WUDH, WUDHP, WUDHRT: Bottom of subsill to top of interior wood sill liner - 3 11/16" (94)
 - Top rail - 2 7/32" (56); stiles - 2 7/16" (62); bottom rail - 3 9/16" (90)
 - WUDHT: Bottom of sill to top of interior wood sill liner - 1 31/32" (50)
 - Top rail - 2 7/32" (56); stiles - 2 7/16" (62); bottom rail - 2 19/32" (66)

Standard Insect Screen:

- Standard screen is roll formed aluminum
- Aluminum screen: Full screen standard, half screen optional
- Colors available: Pebble Gray, Bahama Brown, Evergreen, Bronze, Stone White, Ebony, Wineberry, Coconut Cream, Hampton Sage, Cashmere, Sierra White, Cadet Gray, Cascade Blue, Bright Silver (pearlescent), Copper (pearlescent), Clay, Gunmetal, Liberty Bronze (pearlescent), or Suede.
- Screen mesh: Charcoal Fiberglass
 - Optional screen mesh: Charcoal High Transparency Fiberglass Mesh, Charcoal Aluminum Wire, Black Aluminum Wire, Bright Aluminum Wire, or Bright Bronze Aluminum Wire
- Screens have an aluminum crossbar on glass heights of 20" (508) and taller
- Optional wood screen

Wood Ultimate Double Hung Collection

Unit Features

Magnum Frame:

- Double Hung Magnums has a frame thickness head and jamb: 1 1/16" (17)
- Double Hung Magnums has a sill thickness: 2 13/16"(71)
- Frame base (with pre-drilled installation holes in jambs): 4 9/16"(116) from backside of BMC to interior wood face of frame
- 8 degree bevel on sill and subsill
- Curved frames are laminated and/or edge glued pine
- Radius bead is laminated in non finger-jointed pine

Magnum Sash:

- Transom and picture unit sash thickness 1 5/8"(41) or optional 2" (51)
- All measurements are nominal - sash are removable for easy cleaning, service or finishing
 - WUDHM, WUDHMP, WURTDHM: Bottom of subsill to top of wood interior sill liner - 3 29/32" (99)
 - Top rail - 2 7/32" (56); stiles - 1 15/32" (37); bottom rail - 3 9/16" (90)
 - WUDHMT: Bottom of sill to top of wood interior sill liner- 1 31/32" (50)
 - Top rail - 2 7/32" (56); stiles -1 15/32" (37); bottom rail - 2 19/32" (66)

Magnum Insect Screen:

- Extruded aluminum surround: Full screen standard, half screen optional
- Colors available: Pebble Gray, Bahama Brown, Evergreen, Bronze, Stone White, Ebony, Wineberry, Coconut Cream, Hampton Sage, Cashmere, Sierra White, Cadet Gray, Cascade Blue, Bright Silver (pearlescent), Copper (pearlescent), Clay, Gunmetal, Liberty Bronze (pearlescent), or Suede.
- Screen mesh: Charcoal High Transparency Fiberglass Mesh (CH Hi-Tran)
 - Optional Screen Mesh: Charcoal Fiberglass, Charcoal Aluminum Wire, Black Aluminum Wire, Bright Aluminum Wire, or Bright Bronze Aluminum Wire
- Screens have an aluminum crossbar on glass heights of 20" (508) and taller
- Optional wood screen

Hardware: - See Individual Product Chapters

Weather Strip:

- Operating units: Continuous leaf weather strip at head jamb; dual bulb at check rail, weather strip and bottom rail
 - Color: Beige
- Picture units: Continuous weather strip at perimeter; leaf and bulb weather strip at jamb, bulb weather strip at head and sill
 - Color: Beige

Glass and Glazing:

- Glazing method: Insulating
- Glazing seal: Silicone glazed
- Standard glass is insulating Low E2 Argon or air
- Optional glass types: Clear, Low E1 Argon or air, Low E3 Argon or air, Laminated, Tempered, and Obscure, Bronze Tint, Gray Tint, Reflective Bronze, and Decorative glass options
- Glazing will be altitude adjusted for higher elevations - Argon, Argon-Krypton, and Krypton gas is not available
- Tripane glass options - see individual product chapters
- ADL glazing options not available with Argon

CE Optional Glazing:

- Glazing method: Insulating
- Glazing seal: Silicone glazed
- Standard glass is insulating Low E2 Argon or air
- Optional dual glazing available: Low E1 Argon or air, Low E3 Argon or air, Low E2/ERS argon or air, Low E3/ERS Argon or air, clear, laminated clear and tints, tempered, sandblasted
- Optional Tripane glass types: Low E1/E1 Argon or Krypton-Argon, Low E2/E2 Argon or Krypton-Argon, Low E3/E1 Argon or Krypton-Argon
- Glass panes available in 3, 4, and 6 mm thicknesses
- Laminated panes available in 7.0 and 7.8 mm thicknesses
- Glazing will be altitude adjusted for higher elevations, Argon, Argon-Krypton, and Krypton gas not included

Wood Ultimate Double Hung Collection

Unit Features

Wood Combination Storm Sash and Screen:

- Frame: Treated bare wood or white primed (pine only)
- Storm panel: Select quality glass is an extruded aluminum frame
- Frame color: Stone White, Pebble Gray, Bronze, Bahama Brown or Evergreen
- Insect screen: Charcoal Aluminum Wire
 - Optional screen material: Charcoal Fiberglass Mesh, Black Aluminum Wire, Bright Aluminum Wire, Bright Bronze Wire, Charcoal High Transparency Fiberglass Mesh (CH Hi-Tran)
- Weather strip: Pile weather strip between operating panels and at stiles of main frame
- Hardware: Spring loaded latches to secure storm panel.

Combination Storm and Sash Screen:

- Frame: Treated bare Pine wood or white primed (pine only)
- Storm panel: Select quality glass in an extruded aluminum frame
- Colors: Stone White, Bahama Brown, Bronze, Pebble Gray, or Evergreen
 - Standard screen: Charcoal Aluminum Wire
 - Optional screen mesh: Charcoal Fiberglass Mesh, Black Aluminum Wire, Bright Aluminum Wire, Bright Bronze Wire or High Transparency Fiberglass Mesh (CH Hi-Tran)
- Weather strip: Pile weather strip between operating panels at the stiles of the main frame
- Hardware: Spring loaded latches to secure the storm panel.

Wood Storm Sash:

- Frame: Treated bare pine wood or white primed (pine only)
- Glazing: Select quality glass

Interior Shade:

- Cellular shade is attached to the window with a removable surround system that houses the cellular shade system
 - Minimum jamb depth required 5 13/16" (148)
 - Shade cartridge is removable and replaceable
 - Shade control: Top down, bottom up
 - Egress is reduced, see individual chapter for egress formula
- Wood wrapped extruded aluminum cellular shade
 - Single non-fire rated hexagonal honeycomb (cellular) 3/4" (19)
 - Semi-opaque fabric (light filtering)
 - Colors: Driftwood, Marigold, Almond, Rose, Denim, Biscuit, Champagne, Moss, Cinnamon, Silver, White, Stone, Tan, Ivory, Eggshell
 - Opaque fabric (blackout)
 - Colors: White, Stone, Tan, Ivory, Eggshell
- Order options:
 - Ship separate: Shade system packages separate and ships same time as the unit
 - Ship later: Shade system ships at a later date chosen by the customer
 - Shade option must be chosen at the time of unit order
 - Fabric opacity and color can be chosen at later date
 - Retro fit: Ordered as a complete shade system through configured parts

Cedar Dress Option:

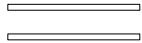
- Available on pine frames
- Bare cedar
- Components:
 - Sill
 - Subsill
 - Blind stops and jamb covers
 - Mull covers
 - Brick Mold and Flat Casing
- See individual chapter for section detail

CE Mulling Options:

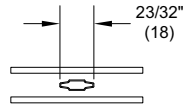
- Mullled assemblies up to 70 3/4" (1797) x 80 3/8" (2042) as 1H x multi-width
- Mullled assemblies with 1" (25) LVL or 3/8" (10) aluminum mull reinforcement up to 124 7/8" (3172) x 100 3/8" (2550) as a multi-wide or multi-high assembly

Wood Ultimate Double Hung Collection

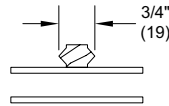
Standard Insulating Glass Divided Lite Options



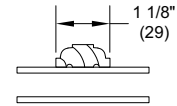
Insulating Glass



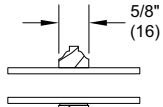
Aluminum 23/32"
Contour GBG



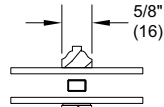
3/4" Grille



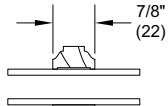
1 1/8" Grille



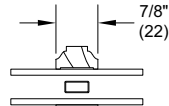
5/8" SDL



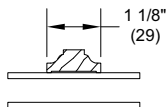
5/8" SDL
W/Spacer



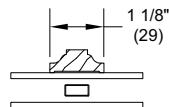
7/8" SDL



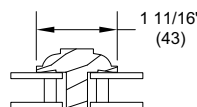
7/8" SDL
W/Spacer Bar



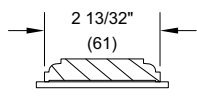
1 1/8" SDL



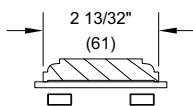
1 1/8" SDL
W/Spacer Bar



1 11/16" IG ADL



2 13/32" SDL

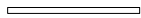


2 13/32" SDL
W/Two Spacer Bar

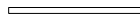
NOTE: ADL is not available with CE Mark.

Wood Ultimate Double Hung Collection

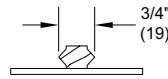
Standard Single Glaze Divided Lite Options



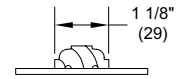
Single Glaze



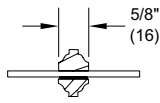
Single Glaze
W/ Energy Panel



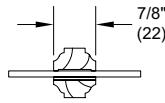
3/4" Grille



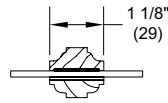
1 1/8" Grille



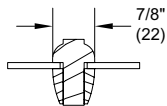
5/8" SDL



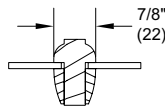
7/8" SDL



1 1/8" SDL



7/8" SG-ADL

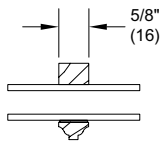


7/8" SG-ADL
W/ Energy Panel

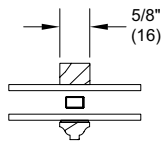
NOTE: Single Glaze and ADL are not available with CE Mark.

Wood Ultimate Double Hung Collection

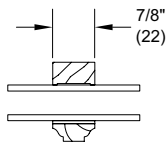
Optional Interior Square Simulated Divided Lite



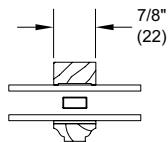
5/8" SDL



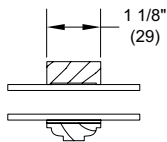
5/8" SDL
W/Spacer



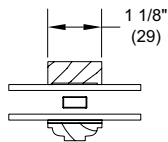
7/8" SDL



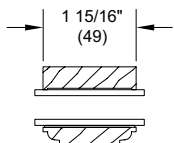
7/8" SDL
W/Spacer Bar



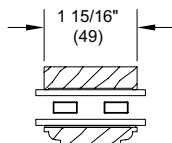
1 1/8" SDL



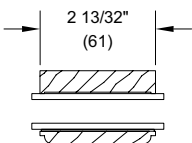
1 1/8" SDL
W/Spacer Bar



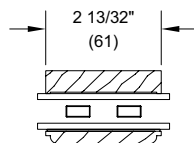
1 15/16" SDL



1 15/16" SDL
W/Two Spacer Bars

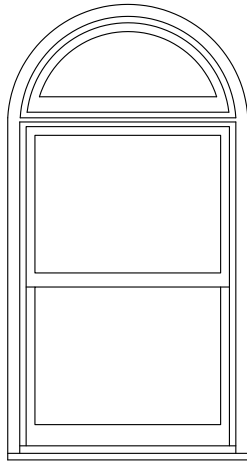


2 13/32" SDL

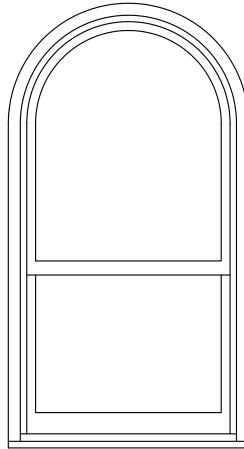


2 13/32" SDL
W/Two Spacer Bar

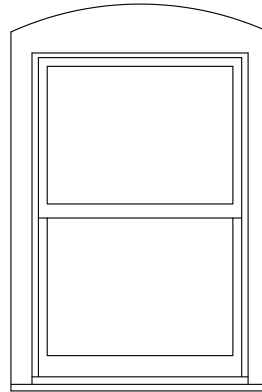
Double Hung Variations



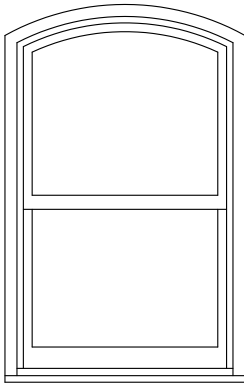
Variation 1



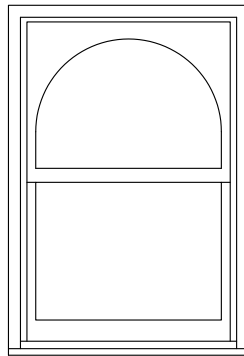
Variation 2



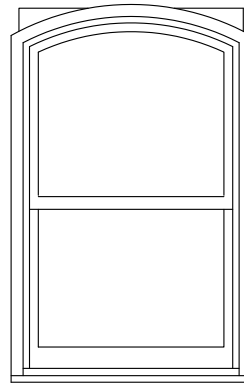
Variation 3



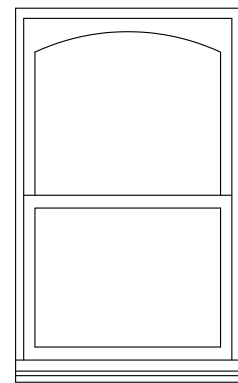
Variation 4



Variation 5



Variation 6
Exterior View



Variation 6
Interior View

Variation 1: In-Sash or Direct Glaze over Wood Ultimate Double Hung or Single Hung, or Wood Magnum Double Hung and Single Hung

Variation 2: Wood Ultimate Double Hung, or Wood Magnum Single Hung

Variation 3: Radius Top Casing - Wood Ultimate Double Hung or Single Hung, Wood Magnum Double Hung or Single Hung

Variation 4: Wood Ultimate Double Hung or Single Hung, Wood Magnum Double Hung or Single Hung

Variation 5: Top Sash Radius DLO - Wood Ultimate Double Hung or Single Hung, Wood Magnum Double Hung or Single Hung

Variation 6: Square Sash, Casing, Blindstop, and DLO are curved - Wood Ultimate Double Hung or Single Hung, Wood Magnum Double Hung or Single Hung