

Integrity All Ultrex Sliding Patio Door (IFSPD) Slim Handle Set Field Applied Instruction

ABSTRACT: The following instructions are intended as a supplement to the door installation instruction included with the Integrity All Ultrex Sliding Patio Door. Follow these instructions to install the slim handle kit, allowing for a 32" Net Clear Opening (NCO). As always, read all instructions in their entirety before installing the handle kit.

NOTE: Numbers listed in parentheses () are metric equivalents in millimeters rounded to the nearest whole number.



WARNING

Removal of panel stops to achieve 32" Net Clear Opening (NCO), as outlined in Step 3 of these instructions, will allow handle to contact stationary stile when fully opened. Use caution when opening door.

You will need to supply

Safety glasses #2 Phillips screwdriver

Install the Handle

1. Place exterior handle on the door with the grip pointing toward the jamb. Place the interior handle on the door with the grip pointed toward the glass. Install the machine screws (2" for the Northfield handle or 1 5/8" for the Cambridge handle) through the handle. Before tightening, move exterior handle towards jamb as far as possible. See figure 1.

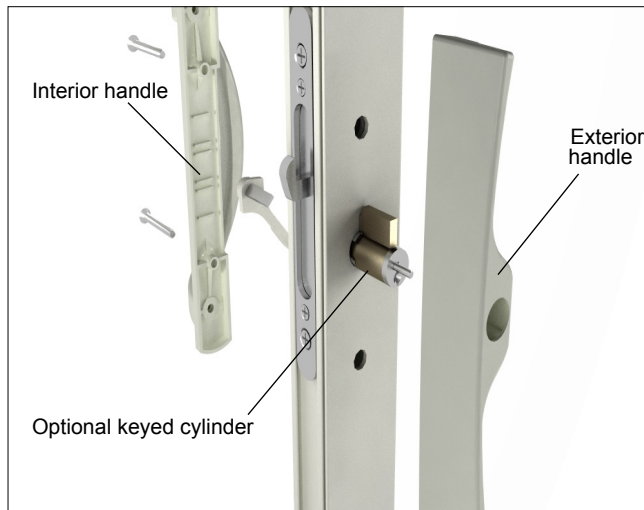


Figure 1 Cambridge handle shown

2. If not done, install the panel keeper as described in the [All Ultrex Sliding Patio Door Supplemental Instruction](#).

3. Remove both panel stops for the head jamb and sill. See figure 2.

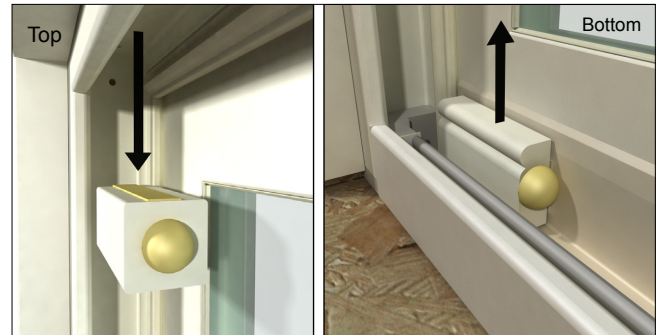


Figure 2

Retrofitting Door with Keyed Handle Set

NOTE: It is important that the correct template is used. Looking from the exterior, choose the "XO" template if the operator panel is on the left. Choose the "OX" template if the operator panel is on the right.

1. Using a #2 Phillips screwdriver, remove the two screws and existing handle set (if installed). See figure 3.

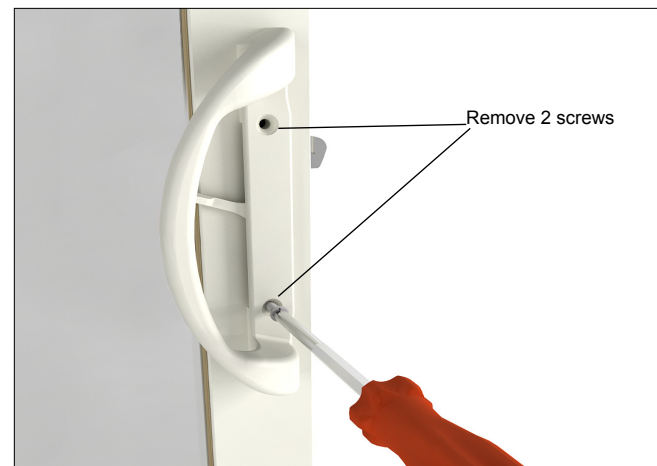


Figure 3 Cambridge handle shown

2. Align the top and bottom placement hole of the template with the exterior holes of the door. Be sure to point the direction arrows toward the glass and top of the panel. See figure 4. Attach the template to the door with tape.

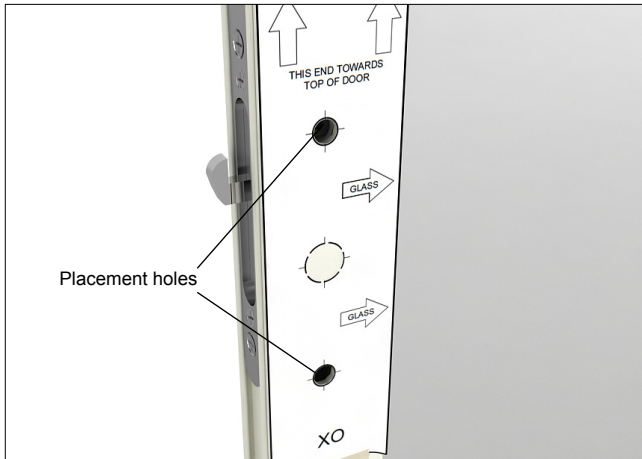


Figure 4

3. To prevent the backer from falling to the bottom of the panel, place a flat screwdriver in the top handle set hole. This screwdriver will remain in place until the lock box is fastened back in place. See figure 5.

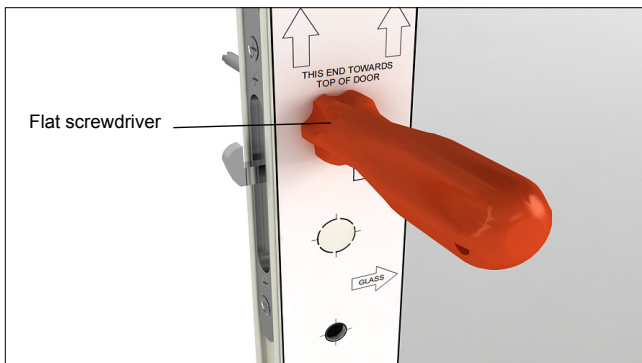


Figure 5

4. Remove the top and bottom Phillips screws from the lock box and pry it loose with another flat screwdriver. See figure 6.

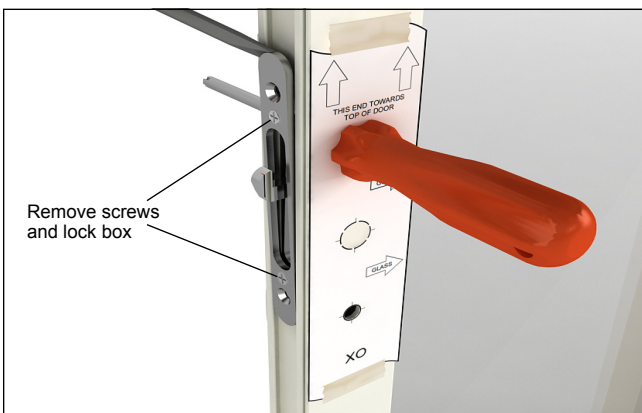


Figure 6

5. Drill a pilot hole with a 1/4" (6) drill bit through the dashed template (exterior Ultrex wall and backer wall) without going through the second wall of Ultrex.

6. Drill out the pilot hole with the 5/8" (16) drill bit (through the Ultrex wall and backer wall) without going through the second wall of Ultrex. See figure 7.

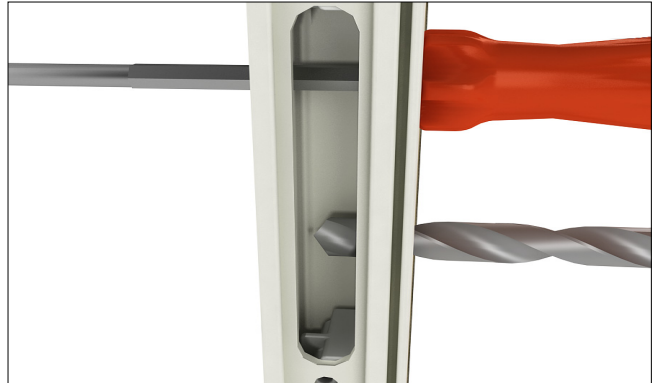


Figure 7

7. Reinstall the lock box and secure with the two Phillips screws removed in step 4. See figure 8.

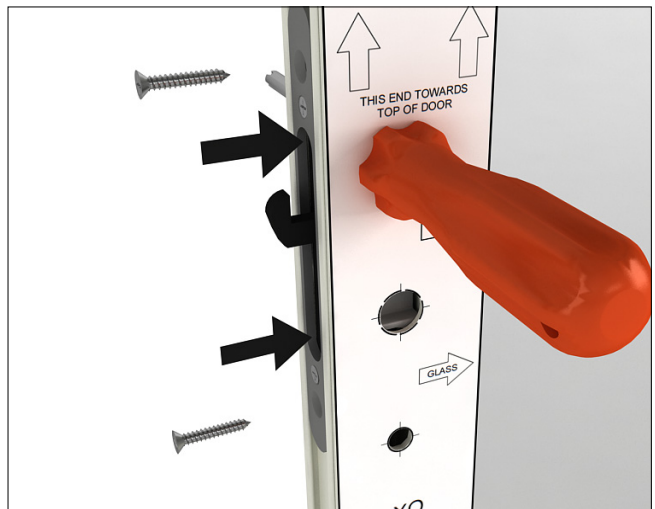


Figure 8

8. Remove flat screwdriver from the top handle set hole. Remove template.

9. Install handle set, following steps 1 and 3 in the first section of this instruction "Install the Handle".

ATTENTION

The templates shown below are for All Ultrex product. Looking from the exterior, choose the "XO" template (XO, XOO, and OXO-R configurations) if the operator panel is on the left. Choose "OX" (OX, OOX, and OXO-L configurations) if the operator panel is on the right.

