

Infinity Casement and Awning

| | |
|--|----|
| Unit Features..... | 1 |
| Lite Options | 3 |
| Minimum and Maximum Guidelines | 4 |
| Certified Sizes and Ratings..... | 5 |
| STC/OITC Glass Values | 6 |
| Mulling Guidelines | 7 |
| 1/2" Mull Reinforcement Guidelines | 8 |
| Measurement Conversions: Operable Units | 9 |
| Measurement Conversions: Picture | 10 |
| Measurement Conversions: Egress - Easy Wash™ | 11 |
| Measurement Conversions: Egress - Clear View..... | 12 |
| Section Details: Operating and Picture | 13 |
| Section Details: Casing Options..... | 14 |
| Section Details: Mullions | 15 |
| Section Details: 1/2" Mull Reinforcement | 16 |
| Interior Frame Accessories | 17 |

Infinity Casement, Awning and Picture

Unit Features

Infinity Casement: NCA

Infinity Awning: NAWN

Infinity Casement Picture: NCAP

Ultrex® Pultruded Fiberglass Frame:

- Frame thickness: 1 5/16" (33)
- Frame depth: 2 5/32" (55)
- Exterior colors: Stone White, Sierra, Cashmere, Pebble Gray, Bahama Brown, Bronze
- Interior colors: Stone White, Sierra, EverWood™

Ultrex® Pultruded Fiberglass Sash:

- Sash thickness: 1 3/8" (35)
- Operating sash is removable for cleaning
- Sash are replaceable but cannot be re-glazed
- Exterior colors: Stone White, Sierra, Cashmere, Pebble Gray, Bahama Brown, Bronze
- Interior colors: Stone White, Sierra, EverWood™

Casement Hardware:

- Lock and keeper:
 - Multi-point locking mechanism that is actuated from a single point of operation. Lock mechanisms are concealed with only the actuator handle and escutcheon being visible to the interior. Keepers are mounted to the interior face of the sash and interlocks within concealed lock when actuated.
- Operator:
 - Concealed hinges with stainless steel tracks
 - Snubber: pulls the sash tight to the frame and provides positive engagement to secure the sash under structural load conditions
 - Dual arm roto-gear operator on units 24 3/8" (619) wide frame size and over
 - Split-arm roto-gear operator used on units less than 24 3/8" (619) wide
- Handle:
 - Die-cast folding crank handle
- Factory installed Window Opening Control Device (WOCD):
 - Minimum Frame OSM 18 5/32" (461) x 17 3/8" (441)
 - Maximum Frame OSM 40" (1016) x 60" (1524) or 36" (914) x 86" (2184)
 - WOCD locking assembly:
 - Factory installed
 - Die-cast
 - Color: White, Satin Taupe, Sierra
 - WOCD tether assembly: factory installed, glass filled nylon
 - Color: E-Gard color match

Awning Hardware:

- Lock and keeper:
 - Cam lock and stainless steel keeper system
- Operator:
 - Concealed hinges and steel tracks
 - Factory installed roto-gear operator
- Handle:
 - Die-cast folding crank handle
- Sash Limiter:
 - Factory installed or field applied

Weather Strip:

- Frame:
 - Extruded foam bulb weather strip that runs around the perimeter of the frame sealing against the interior face of the sash
 - Color: black
- Sash:
 - Extruded thermoplastic bulb that attaches to a kerf around the top, bottom and sides of the sash; sealing against the inner perimeter of the frame
 - Color: beige or black
 - Black is for Bahama Brown and Bronze exterior units

Infinity Casement, Awning and Picture

Unit Features:

Insect Screens:

- Full screen
- Roll formed aluminum frame
- Mitered corner key; injection molded, color matched to screen
- Color: Stone White, Satin Taupe, Sierra, EverWood™
- Standard screen mesh material: charcoal fiberglass
 - Optional screen mesh material: high transparency

Glass:

- Glazing seal: silicone bedding on interior and exterior
- Standard glass: Low E2 with Argon or air
- Optional glazing available: Low E1 with Argon or air, Low E3 with Argon or air, or Low E3/ERS with Argon or air, tempered, obscure
- Decorative glass options include Glue Chip, Rain, Reed, Narrow Reed, or Frost
- Decorative glass is not available with Low E1, Low E3/ERS, or STC/OITC
- Rain, Reed and Narrow Reed not available with SDL
- SDL available on Frost, annealed or tempered glass
- SDL available on Glue Chip, tempered glass required
- Insulating glass will be altitude adjusted with capillary tubes for higher elevations
- Argon gas is not available for elevations that require capillary tubes

Simulated Divided Lites (SDL):

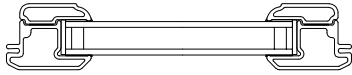
- 7/8" (22) or 1 1/8" (29) SDL bar (interior and exterior)
- 2 11/32" (30) simulated rail (interior and exterior)
- Exterior color: matched to unit exterior
- Interior color: matched to interior - ABS material
- Pattern: equal rectangular, cottage, prairie, check rail

Gilles-Between-the-Glass (GBG):

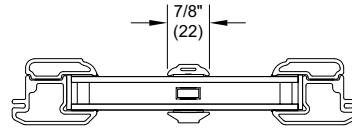
- 23/32" (18) or 1" (25) contoured aluminum bar
- Exterior: color matched to unit exterior
- The exterior GBG color is designed to best match the unit exterior color when used with Low E glass. The use of different types of glazing options may alter the exterior GBG color appearance.
- Interior color: White, Satin Taupe, Sierra, Bronze
- Pattern: equal rectangular, cottage, prairie, check rail

NOTE: GBG may not be available or may require tempered glass if the glass size is greater than 16 square feet or if the short side dimension is greater than 48". Please contact your local Infinity Retailer or Infinity Support at 800-372-1072 to determine if GBG is available for glass sizes exceeding these dimensions.

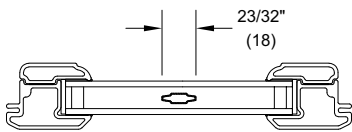
Lite Options



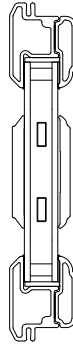
Insulating Glass



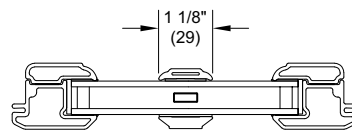
Insulating Glass
7/8" SDL w/ spacer bar



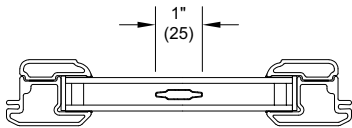
Insulating Glass
23/32" GBG



Insulating Glass
SDL Simulated Rail
w/ spacer bar



Insulating Glass
1 1/8" SDL w/ spacer bar



Insulating Glass
1" GBG

Minimum and Maximum Guidelines

| Minimum and Maximum Guidelines | | | | | | | | | | |
|--------------------------------|------------|-------|------------|-------|-----------|--------|------------|--------|-----------------|----------------|
| Unit Type | Frame Size | | | | | | | | Glass Limits | |
| | Min Width | | Min Height | | Max Width | | Max Height | | Max Glass | |
| | in | mm | in | mm | in | mm | in | mm | ft ² | m ² |
| NCA | 16 1/4 | (413) | 17 3/8 | (441) | 40 | (1016) | 60 | (1524) | 13 29/32 | 1.292 |
| | 16 1/4 | (413) | 17 3/8 | (441) | 36 | (914) | 86 | (2184) | 18 3/32 | 1.681 |
| NAWN | 17 1/2 | (445) | 17 3/8 | (441) | 60 | (1524) | 48 | (1219) | 17 | 1.579 |
| NCAP/ NAWNP | 14 1/4 | (362) | 14 1/4 | (362) | 86 | (2184) | 86 | (2184) | 30 | 2.787 |

NOTE: For Glue Chip, Frost, and Rain, maximum short frame side is 63 1/8".

For Reed and Narrow Reed, vertical pattern orientation maximum frame width size 63 1/8".

For Reed and Narrow Reed, horizontal pattern orientation maximum sash height 63 1/8".

If frame height exceeds 76" or if frame width exceeds 73 1/2", short side dimension of frame cannot exceed 52 1/8".

Tempered glass may be required if the glass size is greater than 23 square feet. Please contact your local Infinity Retailer or Infinity Support at 800-372-1072 to determine available glass options on units exceeding this size.

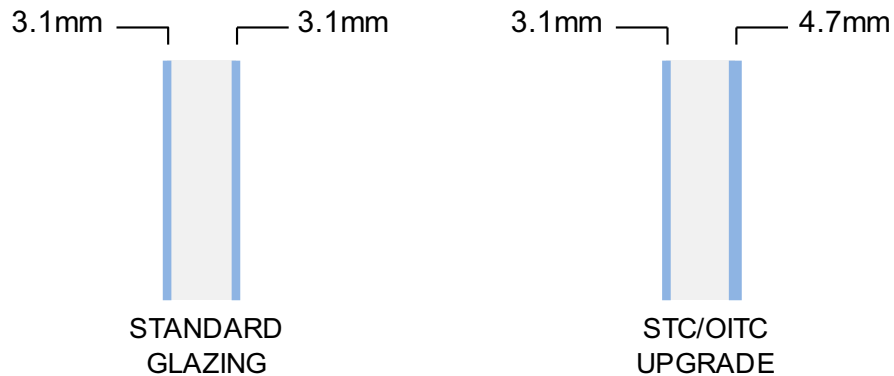
Certified Sizes and Ratings

| Product | Air Tested to psf | Water Tested to psf | Design Pressure (DP) | Certification Rating | Max Overall Width | | Max Overall Height | |
|---------------------------------------|-------------------|---------------------|----------------------|----------------------|-------------------|--------|--------------------|--------|
| | | | | | in | mm | in | mm |
| Infinity Casement | 1.57 | 6.00 | 40.0 | R-PG40-C | 36 | (914) | 86 | (2184) |
| Infinity Casement | 1.57 | 6.00 | 40.0 | LC-PG40-C | 31 | (787) | 86 | (2184) |
| Infinity Casement | 1.57 | 6.00 | 40.0 | LC-PG40-C | 40 | (1016) | 60 | (1524) |
| Infinity Casement | 1.57 | 6.00 | 40.0 | LC-PG40-C | 36 | (914) | 72 | (1829) |
| Infinity Casement | 1.57 | 6.00 | 40.0 | R-PG40-C | 24 23/64 | (619) | 86 | (2184) |
| Infinity Casement | 1.57 | 6.00 | 40.0 | LC-PG40-C | 21 3/8 | (543) | 86 | (2184) |
| Infinity Casement (clear view hinges) | 1.57 | 6.00 | 40.0 | LC-PG40-C | 30 23/64 | (771) | 57 | (1448) |
| Infinity Casement (clear view hinges) | 1.57 | 6.00 | 40.0 | R-PG40-C | 30 23/64 | (771) | 72 | (1829) |
| Infinity Awning | 1.57 | 6.00 | 40.0 | LC-PG40-AP | 60 | (1524) | 48 | (1219) |
| Infinity Casement Picture | 1.57 | 6.00 | 40.0 | LC-PG40-FW | 86 | (2184) | 86 | (2184) |

Infinity Casement, Awning and Picture

STC/OITC Glass Values

This glazing option incorporates 3.1mm/4.7mm variable thickness glass to increase STC/OITC performance and improve sound abatement. Infinity's STC/OITC upgrade includes third party ASTM ratings and reports. STC/OITC ratings for this option and for standard 3.1mm/3.1mm insulating glass are shown in the attached chart.



| Product Type | Exterior Glazing | Airspace | Interior Glazing | STC | OITC |
|-----------------------------|------------------|---------------|------------------|-----|------|
| Full Frame Casement | 1/8" (3.1) | 15/32" (11.5) | 1/8" (3.1) | 28 | 25 |
| | 1/8" (3.1) | 13/32" (9.8) | 3/16" (4.7) | 32 | 27 |
| Full Frame Casement Picture | 1/8" (3.1) | 15/32" (11.5) | 1/8" (3.1) | 27 | 24 |
| | 1/8" (3.1) | 13/32" (9.8) | 3/16" (4.7) | 32 | 27 |
| Full Frame Awning | 1/8" (3.1) | 15/32" (11.5) | 1/8" (3.1) | 29 | 25 |
| | 1/8" (3.1) | 13/32" (9.8) | 3/16" (4.7) | 33 | 28 |

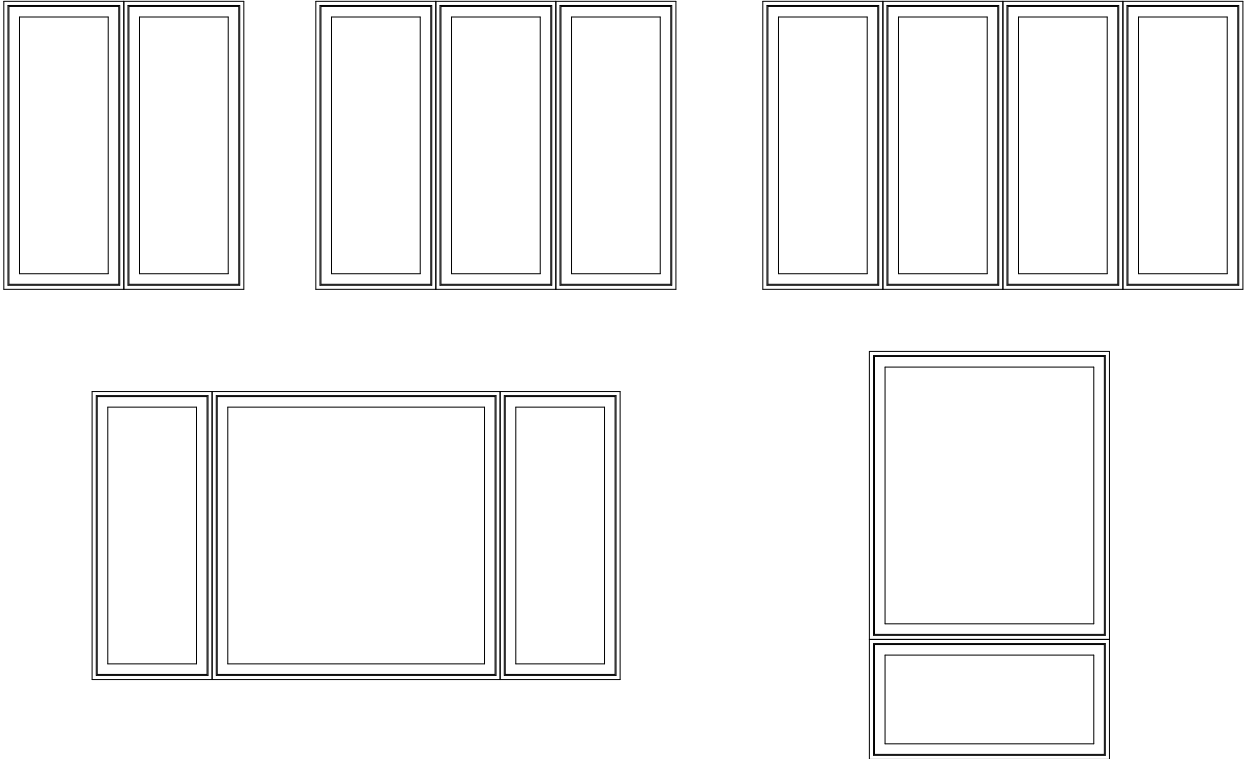
Infinity Casement, Awning and Picture

Mulling Guidelines

Factory Mullered Casement/Awning Assemblies

- Assemblies up to 4 units wide by 1 unit high
 - MAXIMUM ROUGH OPENING not to exceed 113" (2870) x 86 1/2" (2197)
- Assemblies up to 1 unit wide by 2 units high
 - MAXIMUM ROUGH OPENING not to exceed 73" (1854) x 96" (2438)

NOTE: Field mulling beyond the above limitations is not recommended.



Rough Opening Assemblies

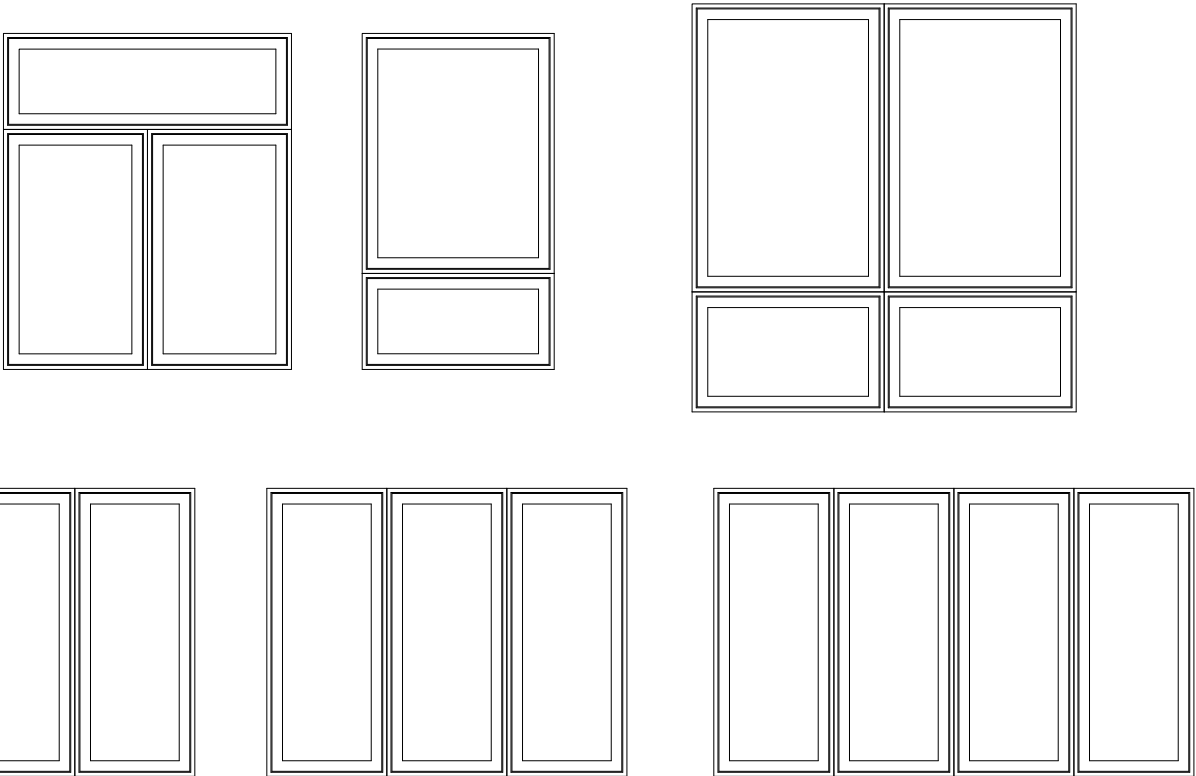
- WIDTH:
 - Frame Width = Single unit Rough Opening width MINUS 1"
 - Total Rough Opening Width = ADD all frame widths PLUS 1"
- HEIGHT:
 - Frame Height = Single unit Rough Opening height MINUS 1/2"
 - Total Rough Opening Height = ADD all frame heights PLUS 1/2"

1/2" Mull Reinforcement Guidelines

Factory Mullered 1/2" Mull Reinforcement Casement/Awning Assemblies

- Assemblies up to 4 units wide by 1 unit high
 - MAXIMUM ROUGH OPENING not to exceed 113" (2870) x 96 1/2" (2451)
- Assemblies up to 1 unit wide by 2 units high
 - MAXIMUM ROUGH OPENING not to exceed 73" (1584) x 96 1/2" (2451)
- Assemblies up to 2 units wide by 2 units high
 - MAXIMUM ROUGH OPENING not to exceed 97 1/2" (2477) x 96 1/2" (2451)
 - MAXIMUM ROUGH OPENING not to exceed 113" (2870) x 86 1/2" (2197)

NOTE: Field mulling beyond the above limitations is not recommended.



Rough Opening Assemblies

- WIDTH:
 - Frame Width = Single unit Rough Opening width MINUS 1"
 - Total Rough Opening Width = ADD all frame widths PLUS 1/2" for each Vertical Mull Reinforcement PLUS 1"
- HEIGHT:
 - Frame Height = Single unit Rough Opening height MINUS 1/2"
 - Total Rough Opening Height = ADD all frame heights PLUS 1/2" for each Horizontal Mull Reinforcement PLUS 1/2"

Measurement Conversions: Operable Units

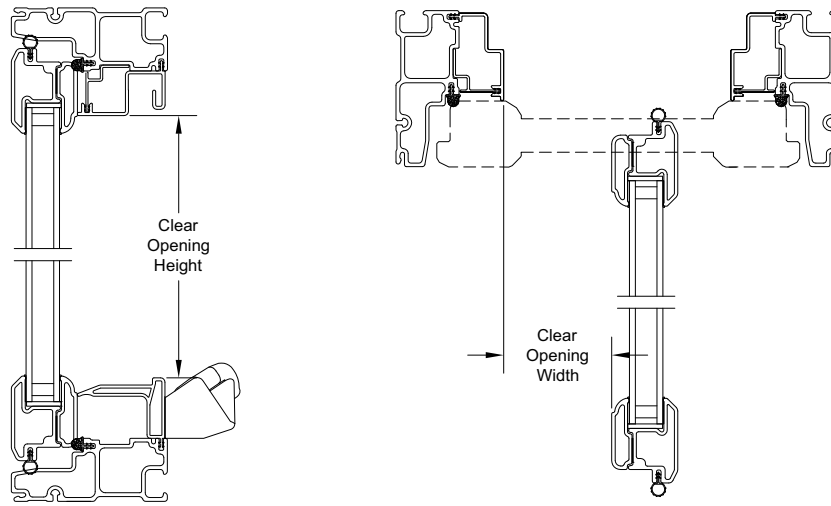
| Unit Measurements - Operator Casement and Awning | | Width | | Height | |
|--|----------------------------|-----------|-----------|-----------|-----------|
| From | To | | | | |
| Rough Opening | | in | mm | in | mm |
| MO with BMC | Rough Opening | -2 1/4 | (57) | -1 11/16 | (43) |
| Masonry Opening | Rough Opening | + 1/2 | (13) | + 1/4 | (6) |
| OM of Frame | Rough Opening | + 1 | (25) | + 1/2 | (13) |
| Daylight Opening | Rough Opening | + 6 7/32 | (158) | + 5 23/32 | (145) |
| Frame | | in | mm | in | mm |
| Daylight Opening | OM of Frame | + 5 7/32 | (132) | + 5 7/32 | (132) |
| Sash | | in | mm | in | mm |
| OM of Frame | OM of Sash | -1 11/16 | (43) | -1 11/16 | (43) |
| Daylight Opening | OM of Sash | + 3 17/32 | (90) | + 3 17/32 | (90) |
| Glass | | in | mm | in | mm |
| Daylight Opening | Glass | + 1 1/16 | (27) | + 1 1/16 | (27) |
| Screen | | in | mm | in | mm |
| OM of Frame | OM of Screen, Non-EverWood | -3 7/8 | (98) | -4 5/16 | (109) |
| OM of Frame | OM of Screen, EverWood | -3 29/32 | (99) | -4 5/16 | (109) |
| Daylight Opening | Non-EverWood Screen OM | + 1 11/32 | (34) | + 29/32 | (23) |
| Daylight Opening | EverWood Screen OM | + 1 5/16 | (33) | + 29/32 | (23) |

Measurement Conversions: Picture

| Unit Measurement - Transom and Picture | | Width | | Height | |
|--|---------------|-----------|-----------|-----------|-----------|
| From | To | | | | |
| Rough Opening | | in | mm | in | mm |
| MO with BMC | Rough Opening | -2 1/4 | (57) | -1 11/16 | (43) |
| Masonry Opening | Rough Opening | + 1/2 | (13) | + 1/4 | (6) |
| OM of Frame | Rough Opening | + 1 | (25) | + 1/2 | (13) |
| Daylight Opening | Rough Opening | + 6 7/32 | (158) | + 5 23/32 | (145) |
| Frame | | in | mm | in | mm |
| Daylight Opening | OM of Frame | + 5 7/32 | (132) | + 5 7/32 | (132) |
| Sash | | in | mm | in | mm |
| OM of Frame | OM of Sash | -1 11/16 | (43) | -1 11/16 | (43) |
| Daylight Opening | OM of Sash | + 3 17/32 | (90) | + 3 17/32 | (90) |
| Glass | | in | mm | in | mm |
| Daylight Opening | Glass | + 1 1/16 | (27) | + 1 1/16 | (27) |

Measurement Conversions: Egress - Easy Wash™

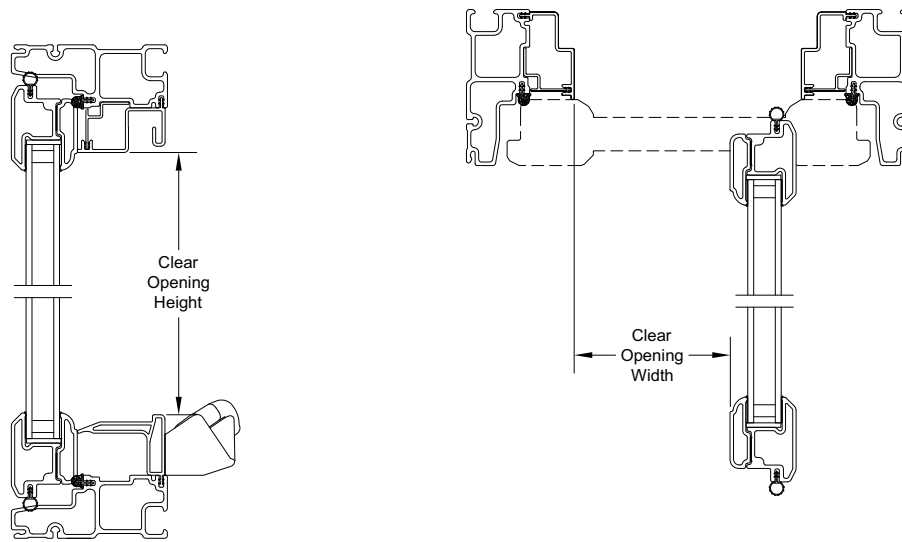
| Egress Conversions | | |
|---|---------------------------|--|
| Easy Wash™ Egress Minimum Opening and Conversions from Frame Size | | |
| Minimum Value for Net Clear Opening | Desired Dimension | Formula |
| 20 in | Egress opening width, in | = NCA frame OM width - 10.352 |
| 24 in | Egress opening height, in | = NCA frame OM height - 4.816 |
| 5.7 ft2 | Egress opening area, ft2 | = ((Egress opening width, in) x (Egress opening height, in)) / 144 |



Easy Wash™ Hinge

Measurement Conversions: Egress - Clear View

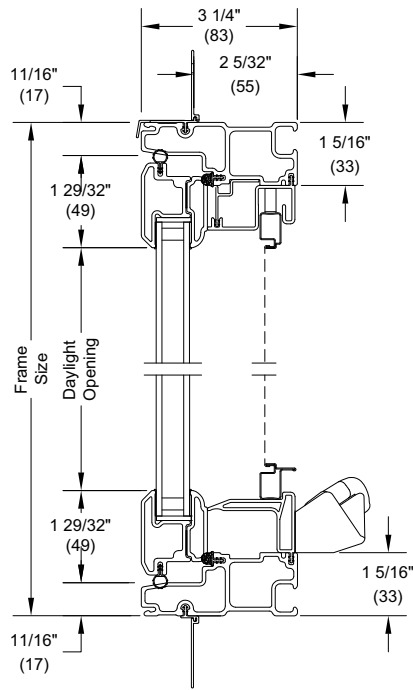
| Egress Conversions | | |
|--|---------------------------|--|
| Clear View™ Egress Minimum Opening and Conversions from Frame Size | | |
| Minimum Value for Net Clear Opening | Desired Dimension | Formula |
| 20 in | Egress opening width, in | = NCA frame OM width - 5.967 |
| 24 in | Egress opening height, in | = NCA frame OM height - 4.816 |
| 5.7 ft2 | Egress opening area, ft2 | = ((Egress opening width, in) x (Egress opening height, in)) / 144 |



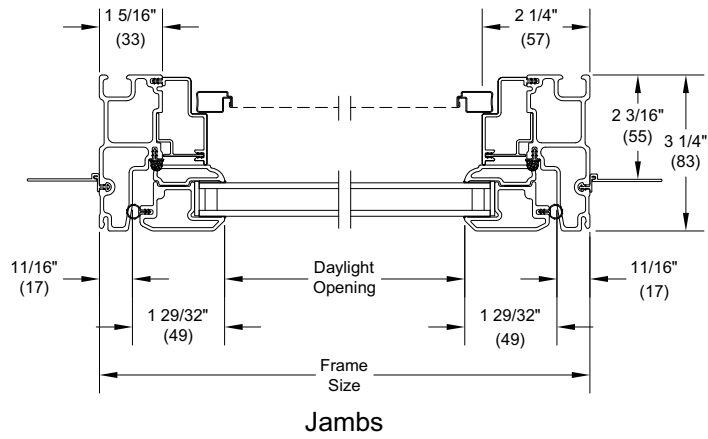
Clear View™ Hinge

Section Details: Operating and Picture

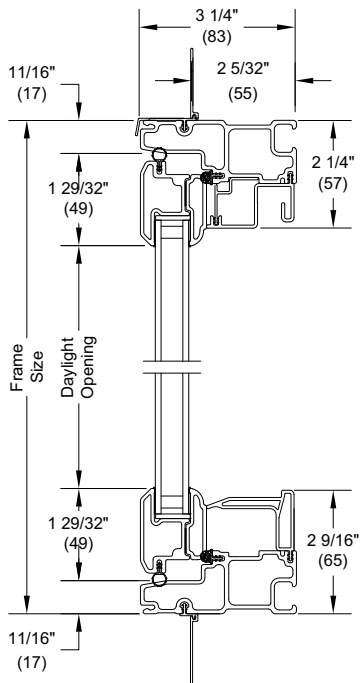
Scale: 3" = 1' 0"



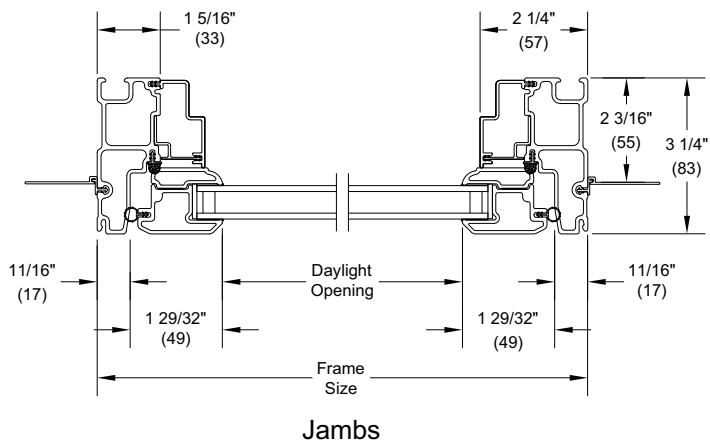
Head Jamb and Sill



Jamb



Head Jamb and Sill

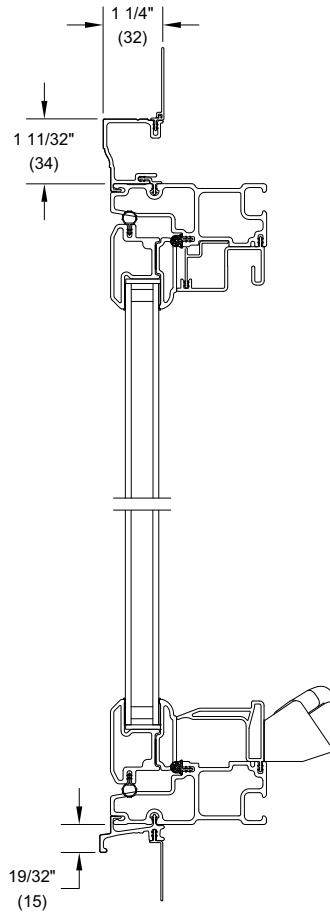


Jamb

Infinity Casement, Awning and Picture

Section Details: Casing Options

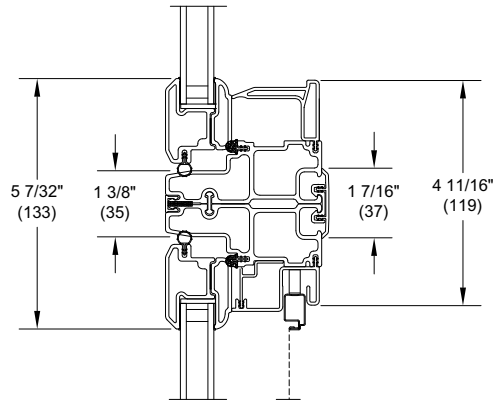
Scale: 3" = 1' 0"



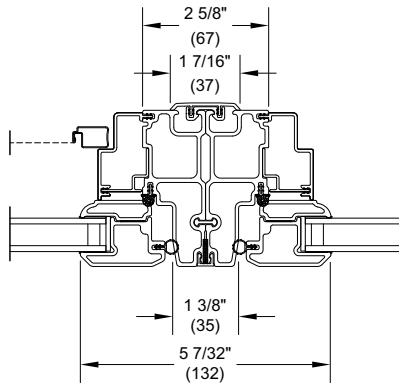
Brick Mould Casing

Section Details: Mullions

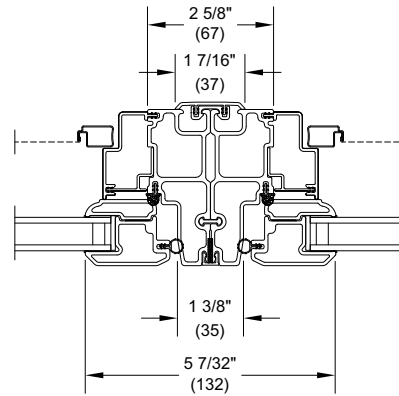
Scale: 3" = 1' 0"



Horizontal
Mullion-Operator/Picture



Vertical
Mullion-Operator/Picture

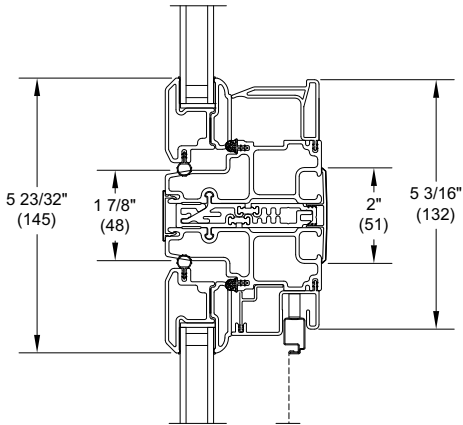


Vertical
Mullion-Operator/Operator

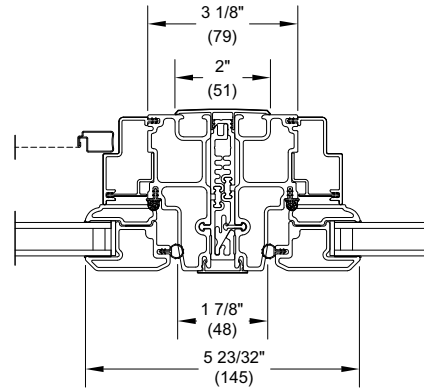
Infinity Casement, Awning and Picture

Section Details: 1/2" Mull Reinforcement

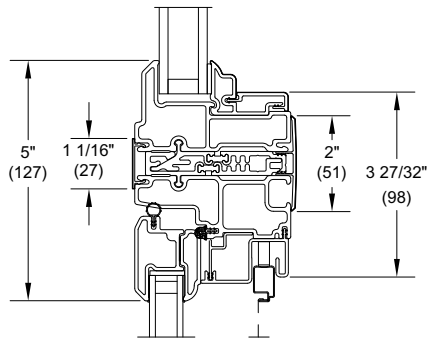
Scale: 3" = 1' 0"



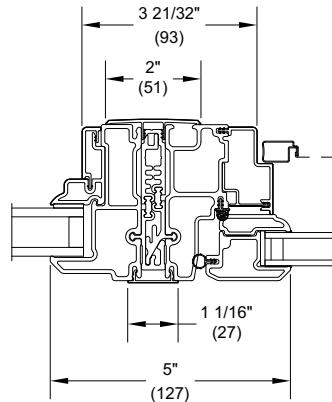
1/2" Mull Reinforcement
 Picture/Operator
 NCAP,NAWNP/NCA,NAWN



1/2" Mull Reinforcement
 Operator/Picture
 NCA,NAWN/NCAP,NAWNP



1/2 " Mull
 Reinforcement
 NCA,NAWN/NDGRT,NPDG



1/2" Mull
 Reinforcement
 NCA,NAWN/NPDG

Interior Frame Accessories

Scale: 3" = 1' 0"

